



PORTS AND YACHTING DIRECTORATE

LOCAL NOTICE TO MARINERS No 188 of 2022

Our Ref: **TM/PYD/63/95**

24 October 2022



Transport Malta

Malta Transport Centre,
Triq Pantar, Hal Lija, LJA 2021
Malta

Tel: (356) 2122 2203
Fax: (356) 2125 0365
Email: info.tm@transport.gov.mt

www.transport.gov.mt

Water sampling from three different localities round Malta – November 2022

The Ports and Yachting Directorate, Transport Malta, notifies mariners and owners of vessels that Water sampling from three different localities round Malta will be carried out on any days between Tuesday 1st November 2022 and Wednesday 30th November 2022 and between 0800 hours and 1700 hours.

The water sampling will be carried out by divers operating from the vessel “*ZIBEL*” at Għar Lapsi, Pembroke and Cirkewwa as listed below.

At Għar Lapsi.

Divers will carry out sampling over a distance of 100m along the line perpendicular to the coast from point 1A as impact point and over a distance of 100m along the line perpendicular to the coast from points 1B, and 1C as control points.

While from the vessel “*ZIBEL*” samples will be taken from within the area 1D, 1E, 1F, 1G, and 1H, as shown on the attached chart 1.

Position	Latitude (N)	Longitude (E)
1A	35° 49'.636	014° 25'.145
1B	35° 50'.034	014° 24'.695
1C	35° 49'.530	014° 25'.797
1D	35° 49'.657	014° 24'.892
1E	35° 49'.252	014° 24'.895
1F	35° 49'.254	014° 25'.393
1G	35° 49'.578	014° 25'.390
1H	35° 49'.659	014° 25'.191



Transport Malta

At Pembroke.

Divers will carry out sampling over a distance of 100m along the line perpendicular to the coast from point 2A as impact point and over a distance of 100m along the line perpendicular to the coast from points 2B, and 2C as control points.

While from the vessel "ZIBEL" samples will be taken from within the area 2D, 2E, 2F, 2G, and 2H, as shown on the attached chart 2.

Position	Latitude (N)	Longitude (E)
2A	35° 56'.051	014° 29'.042
2B	35° 55'.763	014° 29'.605
2C	35° 56'.301	014° 28'.452
2D	35° 56'.698	014° 28'.736
2E	35° 56'.265	014° 28'.739
2F	35° 55'.943	014° 29'.140
2G	35° 55'.945	014° 29'.805
2H	35° 55'.703	014° 29'.800

At Cirkewwa.

Divers will carry out sampling over a distance of 100m along the line perpendicular to the coast from point 3A as impact point and over a distance of 100m along the line perpendicular to the coast from points 3B, and 3C as control points.

While from the vessel "ZIBEL" samples will be taken from within the area 3D, 3E, 3F, 3G, and 3H, as shown on the attached chart 3.

Position	Latitude (N)	Longitude (E)
3A	35° 59'.228	014° 20'.243
3B	35° 59'.383	014° 19'.605
3C	35° 59'.333	014° 20'.896
3D	35° 59'.440	014° 20'.115
3E	35° 59'.278	014° 20'.116
3F	35° 59'.225	014° 20'.250
3G	35° 59'.225	014° 20'.383
3H	35° 59'.442	014° 20'.381



Transport Malta

During the water sampling the vessel “*ZIBEL*”, will be restricted in her ability to manoeuvre and will display the appropriate lights and shape signals in compliance with the International Regulations for the Prevention of Collisions at Sea.

The diving team will be displaying the International Code of Signals flag “A” when diving operations are being carried out.

When the above-mentioned vessel is sighted, mariners are instructed to navigate with caution and shall maintain a safe distance of 100m from the vessel and 100m from the divers.

All mariners are to comply with any instructions given on VHF Channel 12 and/or 16, by Valletta VTS and by any Enforcement Personnel on site.

Chart affected: **BA 36, 211, 2537, 2538**

© British Crown Copyright 1970, 1983, 1986, 1988, 1999, 2000
All rights reserved.

The UK Hydrographic Office makes the accompanying data
Available to Malta Maritime Authority (Transport Malta)
Under the terms and conditions of agreement HO 1427/020930/01.

DISCLAIMER

Whilst the UK Hydrographic Office has endeavoured to ensure
That the material supplied is suitable for the purpose described,
it accepts no liability (to the maximum extent permitted by law)
For any damage or loss of any nature arising from its use.
The material supplied is used entirely at the Recipient's own risk.

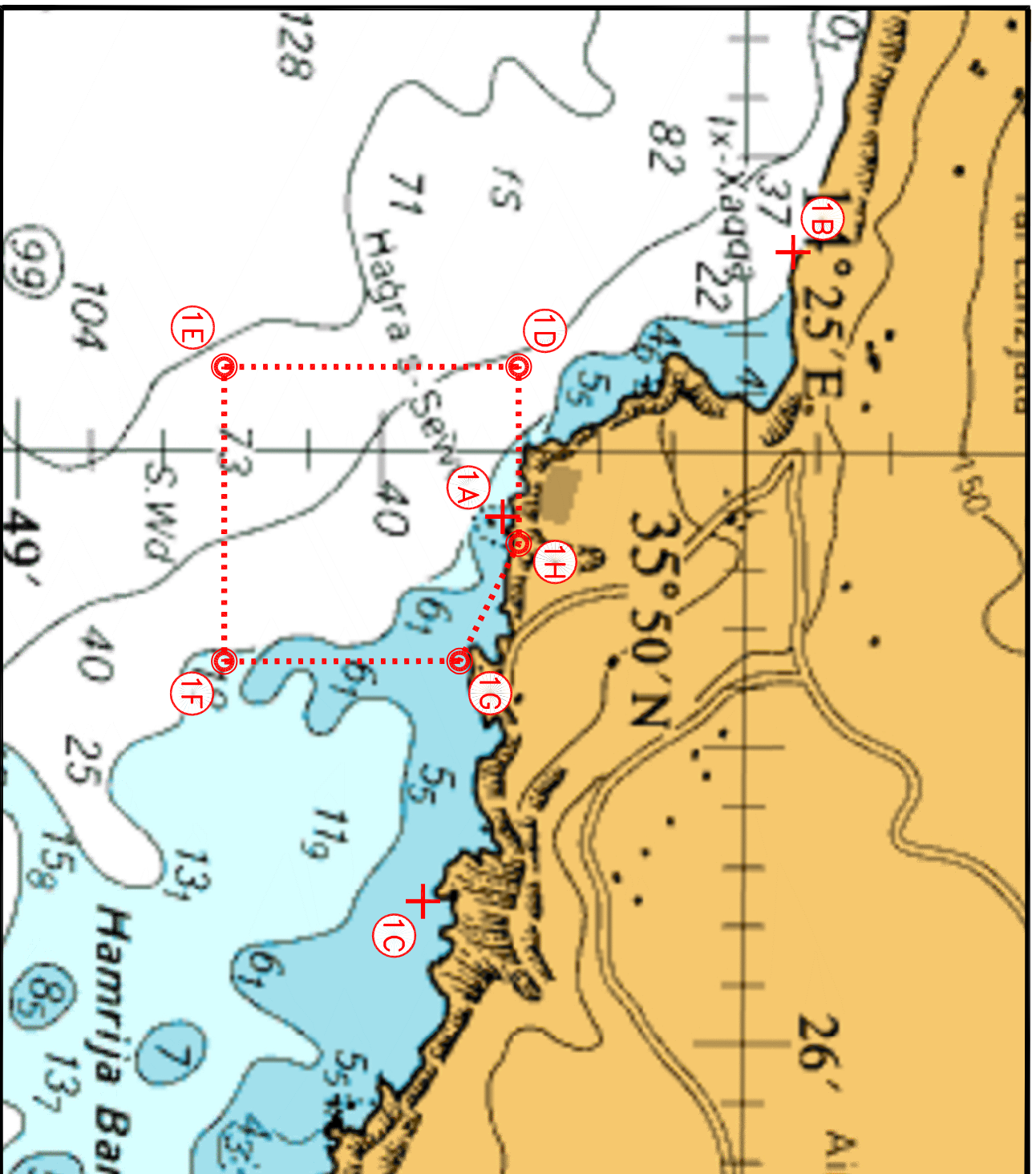


Chart 1

© British Crown Copyright 1970, 1983, 1986, 1988, 1999, 2000
All rights reserved.

The UK Hydrographic Office makes the accompanying data
Available to Malta Maritime Authority (Transport Malta)
Under the terms and conditions of agreement HO 1427/020930/01.

DISCLAIMER

Whilst the UK Hydrographic Office has endeavoured to ensure
That the material supplied is suitable for the purpose described,
it accepts no liability (to the maximum extent permitted by law)
For any damage or loss of any nature arising from its use.
The material supplied is used entirely at the Recipient's own risk.

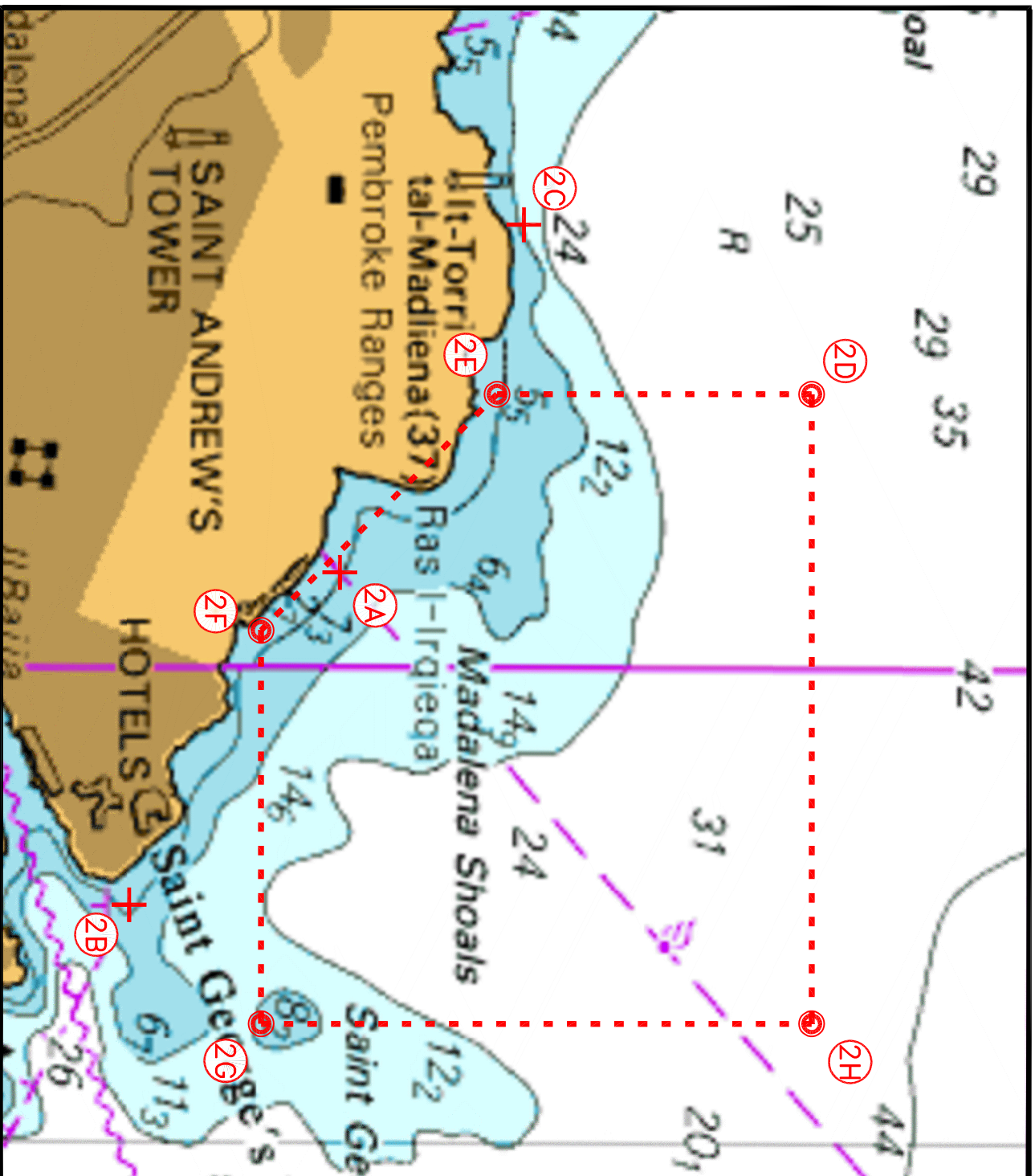
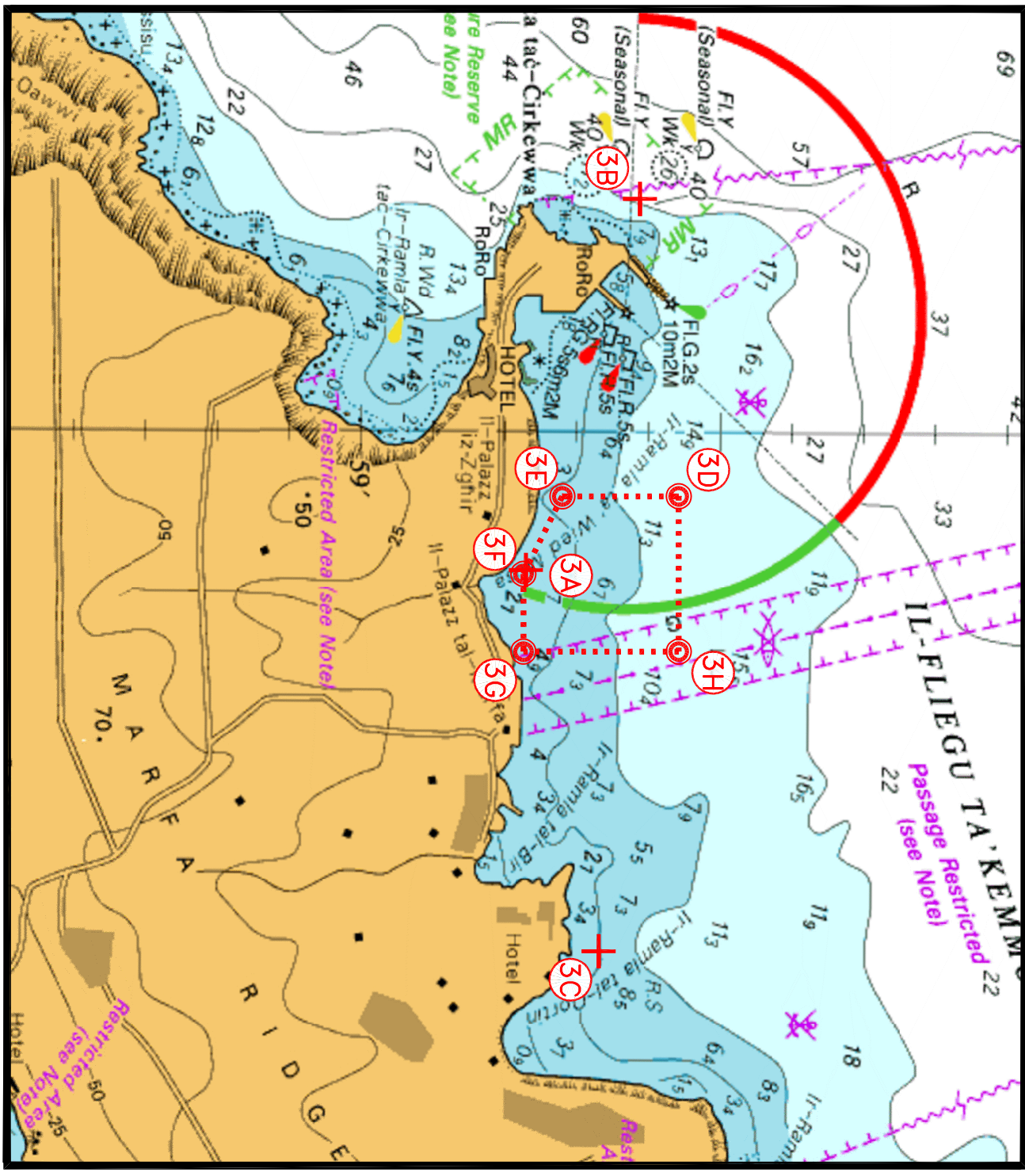


Chart 2



© British Crown Copyright 1970, 1983, 1986, 1988, 1999, 2000
All rights reserved.

The UK Hydrographic Office makes the accompanying data
Available to Malta Maritime Authority (Transport Malta)
Under the terms and conditions of agreement HO 1427/020930/01.

DISCLAIMER

Whilst the UK Hydrographic Office has endeavoured to ensure
That the material supplied is suitable for the purpose described,
It accepts no liability (to the maximum extent permitted by law)
For any damage or loss of any nature arising from its use.
The material supplied is used entirely at the Recipient's own risk.

Chart 3