



PORTS AND YACHTING DIRECTORATE

LOCAL NOTICE TO MARINERS No 174 of 2021

Our Ref: **TM/PYD/83/97**

02 November 2021



Transport Malta

Malta Transport Centre,
Triq Pantar, Hal Lija, LJA 2021
Malta

Tel: (356) 2122 2203
Fax: (356) 2125 0365
Email: info.tm@transport.gov.mt

www.transport.gov.mt

OTILLO - Swimrun World Series 2021

The Ports and Yachting Directorate, Transport Malta notifies mariners that the OTILLO Swimrun World Series 2021 will be held between Saturday 6th and Sunday 7th November 2021. There will be safety boats in each individual swim at all times.

On Saturday 6th November 2021 the Experience Malta 2021 and the Sprint Malta 2021 races will be held, they will be starting and finishing at Il-Bajja tal-Mixquqa (Golden Sands). There will be approximately 300 participants, taking part in the races.

The swimming part of the Experience Malta 2021 will follow the route (as shown on the attached chart 1) and will be as follows:

Swim between points	Start and finish time of the individual swim
from 1A to 1B	1210 hours and 1344 hours,
from 1C to 1D	1220 hours and 1412 hours and
from 1E to 1F	1236 hours and 1430 hours.

The swimming part of the Sprint Malta 2021 will follow the route (as shown on the attached chart 2) and will be as follows:

Swim between points	Start and finish time of the individual swim
from 2A to 2B	1210 hours and 1305 hours,
from 2C to 2D	1240 hours and 1400 hours,
from 2E to 2F	1307 hours and 1500 hours,
from 2G to 2B	1318 hours and 1530 hours. and
from 2H to 2A	1334 hours and 1600 hours.

On Sunday 7th November 2021 the World Series Malta 2021 race will be held, the race will be starting and finishing at Il-Bajja tal-Mixquqa (Golden Sands). There will be approximately 300 participants taking part in the race.



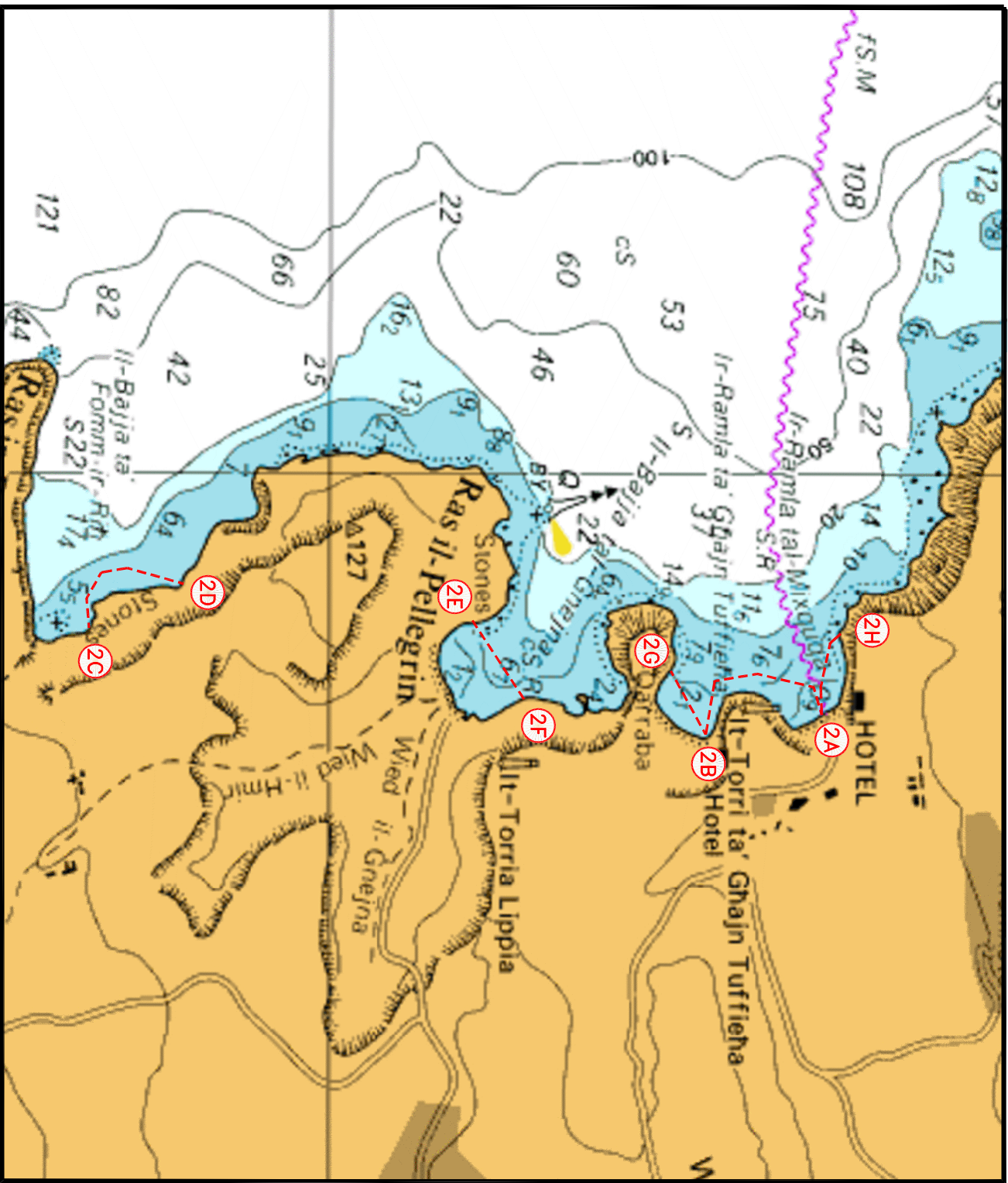
The swimming part of this race will follow the route (as shown on attached chart 3) and will be as follows:

Swim between points	Start and finish time of the individual swim
from 3A to 3B	0820 hours and 0855 hours,
from 3C to 3D	0830 hours and 0920 hours,
from 3E to 3B	0840 hours and 0940 hours,
from 3F to 3G	0915 hours and 1050 hours,
from 3H to 3I	0925 hours and 1055 hours,
from 3J to 3K	0945 hours and 1215 hours,
from 3L to 3M	1000 hours and 1200 hours,
from 3N to 3O	1030 hours and 1330 hours,
from 3P to 3Q	1050 hours and 1400 hours,
from 3R to 3S	1055 hours and 1430 hours,
from 3T to 3U	1105 hours and 1500 hours,
from 3V to 3W	1125 hours and 1510 hours,
from 3X to 3Y	1145 hours and 1550 hours and
from 3Z to 3A	1220 hours and 1630 hours.

Mariners are advised to keep a sharp lookout and navigate at slow speed, they are to keep well clear of the areas during the stipulated dates and times, giving the swimmers and support vessels a wide berth.

Mariners are to comply with instructions issued on VHF channel 12 and/or 16 by Valletta VTS and by any Enforcement Personnel on site.

Charts affected: **BA 211, 2537 and 2538**



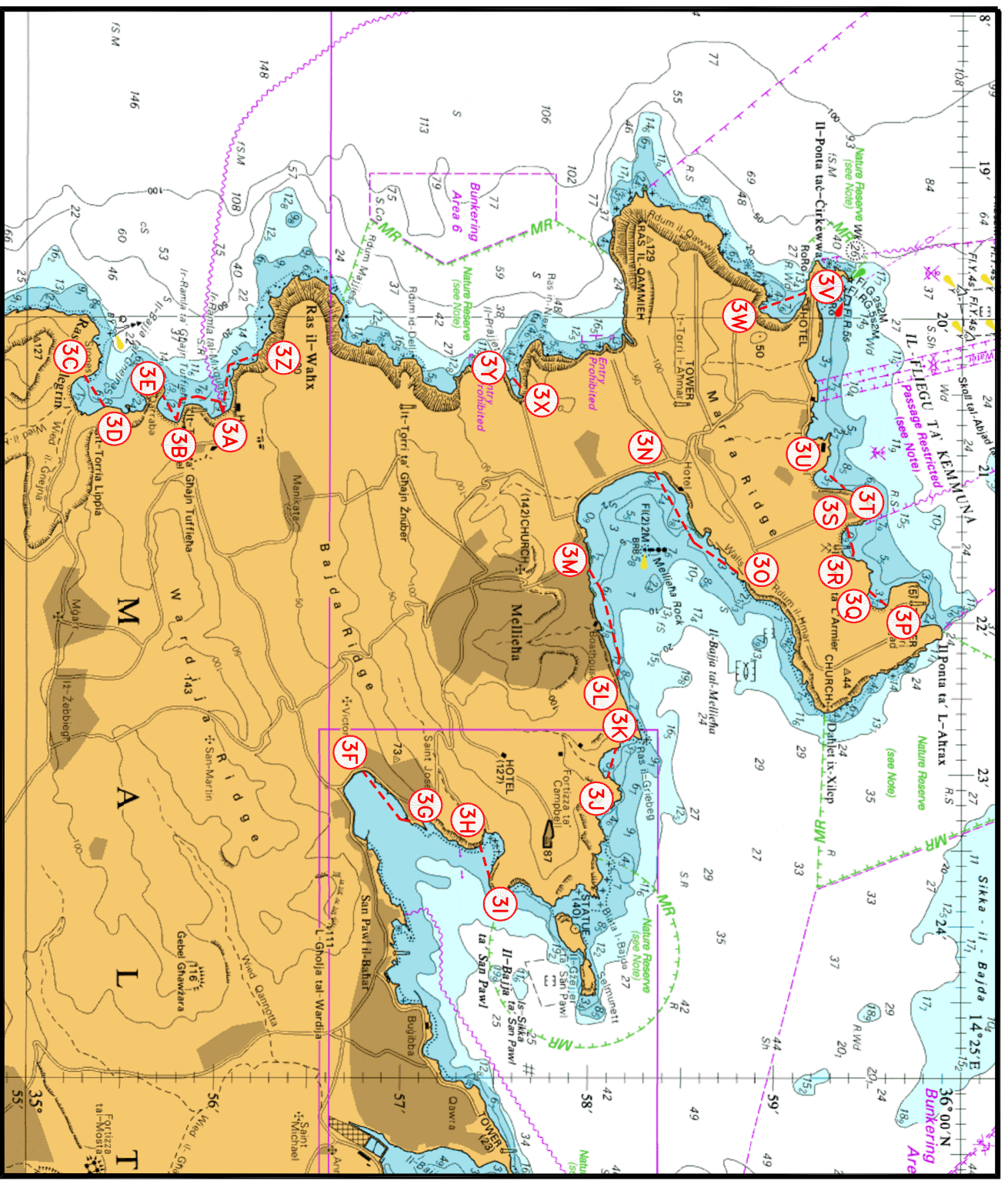
© British Crown Copyright 1970, 1983, 1986, 1988, 1999, 2000
All rights reserved.

The UK Hydrographic Office makes the accompanying data
Available to Malta Maritime Authority (Transport Malta)
Under the terms and conditions of agreement HO 1427/020930/01.

DISCLAIMER

Whilst the UK Hydrographic Office has endeavoured to ensure
That the material supplied is suitable for the purpose described,
It accepts no liability (to the maximum extent permitted by law)
For any damage or loss of any nature arising from its use.
The material supplied is used entirely at the Recipient's own risk.

Chart 2



© British Crown Copyright 1970, 1983, 1986, 1988, 1999, 2000
 All rights reserved.
 The UK Hydrographic Office makes the accompanying data Available to Malta's Maritime Authority (Transport Malta) Under the terms and conditions of agreement HO 1427/020930/01.
DISCLAIMER
 Whilst the UK Hydrographic Office has endeavoured to ensure That the material supplied is suitable for the purpose described, It accepts no liability (to the maximum extent permitted by law) For any damage or loss of any nature arising from its use. The material supplied is used entirely at the Recipient's own risk.

Chart 3