



PORTS AND YACHTING DIRECTORATE

Transport Malta

LOCAL NOTICE TO MARINERS No 173 of 2022

Our Ref: **TM/PYD/83/97**

Malta Transport Centre
Marsa, MRS 1917
Malta

Tel: (356) 2122 2203
Fax: (356) 2125 0365
Email: info.tm@transport.gov.mt

www.transport.gov.mt

29th September 2022

Roberts Cup – Como to Malta Seaplane Rally – 2022- Amendment to Local Notice to Mariners 169 of 2022

The Ports and Yachting Directorate, Transport Malta, notifies that the Malta Seaplanes Association in collaboration with Aero Club Como will be organising the Roberts Cup – Como to Malta Seaplanes Rally between Sunday 2nd October 2022 and Monday 3rd October 2022. Part of the rally will be held in the Grand Harbour, Qalet Marku and il-Fliegu ta' Kemmuna.

The flying displays over the Grand Harbour, Qalet Marku and il-Fliegu ta' Kemmuna will be held between 1000hrs-1300hrs and 1500hrs-1700hrs.

All timings are in Local Time.

The displays will consist mainly of landing and take-off maneuvers and will be held within the area A, B, C and D, as shown hatched in magenta on the attached charts. Mariners are hereby informed that during the dates and times mentioned above traffic movements may be restricted.

Valletta Port Control (Valletta VTS) will be managing the movement of vessels, on VHF channel 12 with respect to the Grand Harbour.

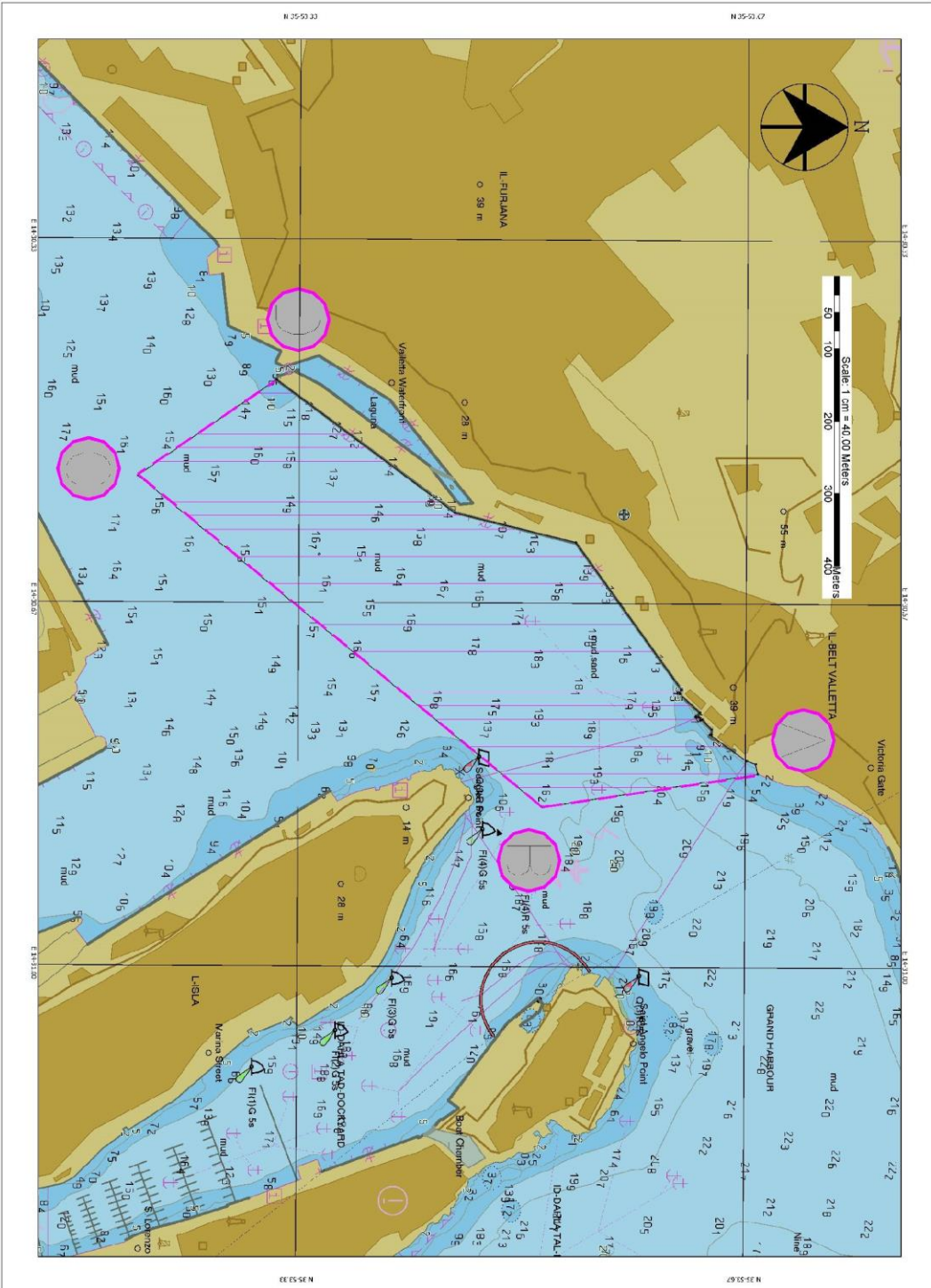
Mariners are to navigate with caution and to keep a sharp lookout when in the vicinity to the above-mentioned area. They are to obey any instructions that are issued by Valletta Port Control (Valletta VTS) on VHF channel 12, and Maritime Enforcement vessels in the area.

Positions are in WGS 84 Datum.

Chart affected: BA Charts 211A, 177, 2538.



Transport Malta



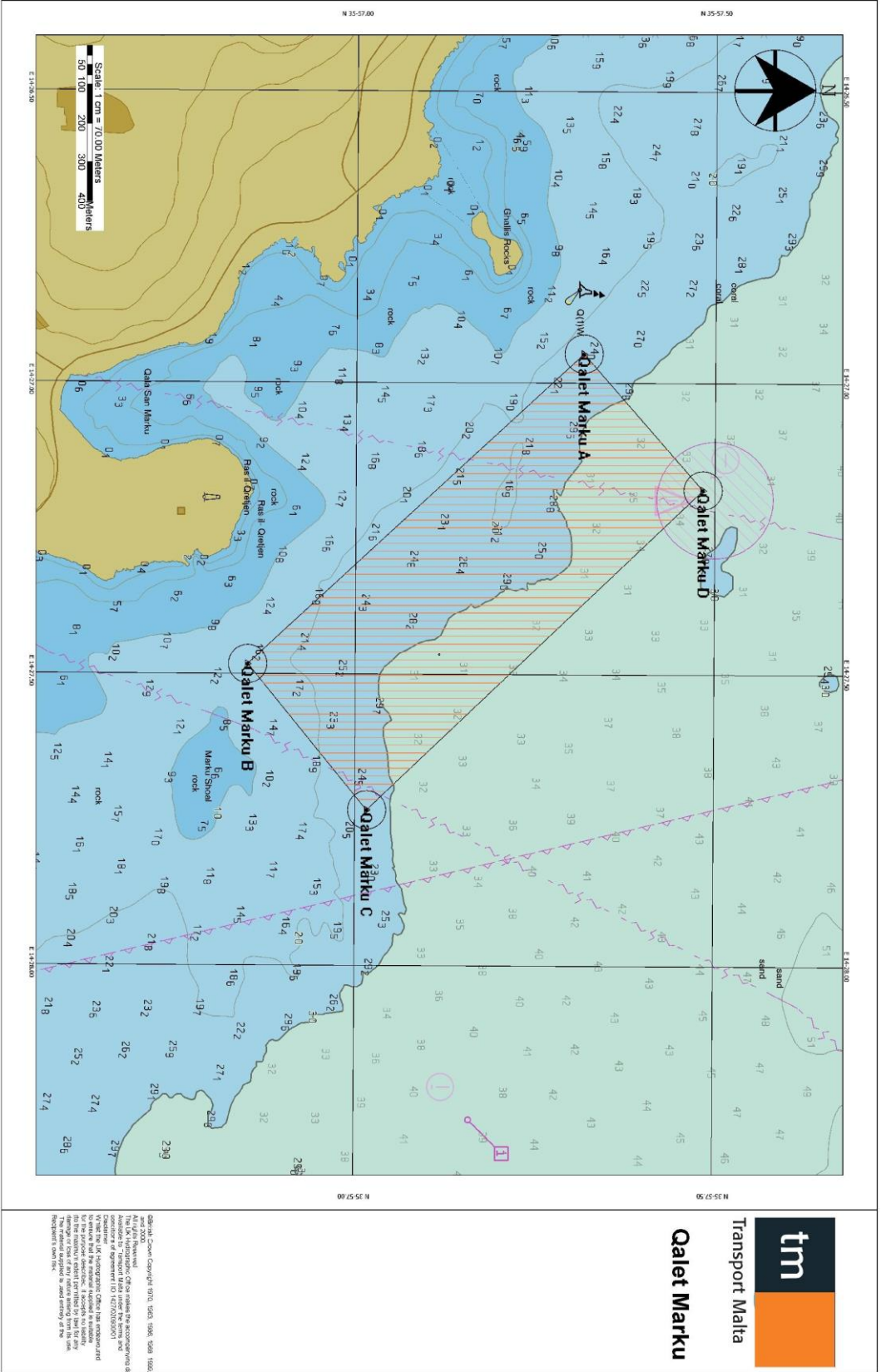
<p>Roberts Cup Come to Malta Sailing Rally 2022</p> <p>Point A 35.53.678N 14.30.8272E Point B 35.53.510N 14.30.8836E Point C 35.53.214N 14.30.5584E Point D 35.53.218N 14.30.4958E</p> <p>Positions are in WGS84 Datum</p>



Transport Malta



Transport Malta



Transport Malta

Galet Markku

© British Crown Copyright 1971, 1998, 1999, 1988, 1989, 1992, 1993, 1994, 1995, 1996, 1997, 1998, 1999, 2000, 2001, 2002, 2003, 2004, 2005, 2006, 2007, 2008, 2009, 2010, 2011, 2012, 2013, 2014, 2015, 2016, 2017, 2018, 2019, 2020, 2021, 2022, 2023, 2024. All rights reserved.

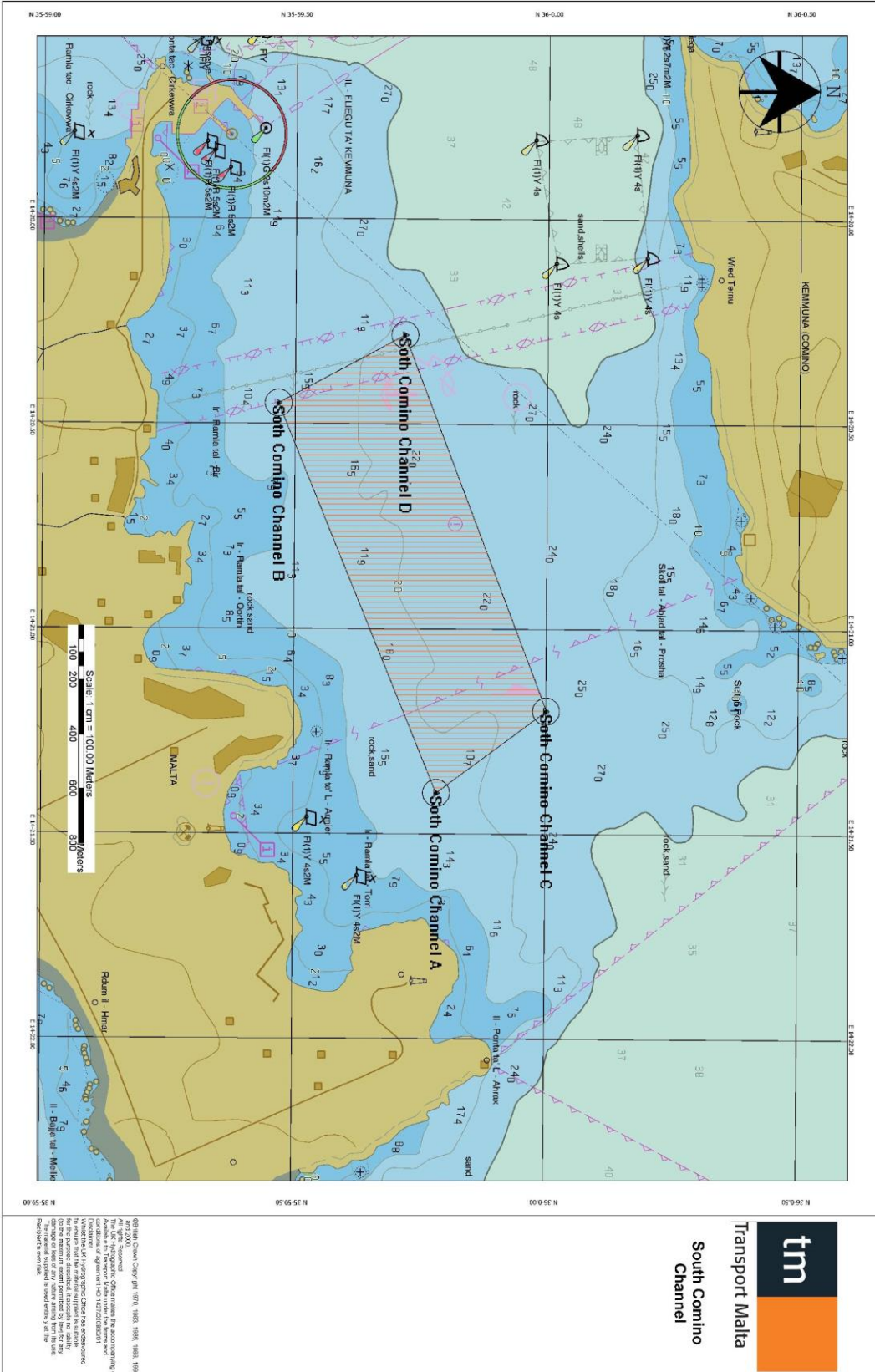
The UK Hydrographic Office makes no representation as to the accuracy or completeness of the information contained in this chart. It is the responsibility of the user to ensure that the information is up to date and correct.

What the UK Hydrographic Office has endeavored to do is to provide a safe and accurate chart for the use of the maritime community. It is not intended to be a substitute for a full survey or a detailed study of the area. It is not intended to be used as a basis for any legal proceedings. It is not intended to be used as a basis for any other purpose. It is not intended to be used as a basis for any other purpose.

Information depicted is based on the most recent available information.



Transport Malta



tm
Transport Malta
South Comino Channel

©HM Coastguard Chart No. 1171, 1981, 1984, 1989, 1992, 2000, 2005, 2008, 2011, 2014, 2017, 2020
This chart is based on the Hydrographic Office's latest information and is not intended to be used for navigation without the aid of a compass or other navigational aid. The Hydrographic Office is not responsible for any errors or omissions in this chart. The information contained in this chart is for reference only and should not be used for navigation. The information contained in this chart is for reference only and should not be used for navigation. The information contained in this chart is for reference only and should not be used for navigation.