



PORTS AND YACHTING DIRECTORATE

LOCAL NOTICE TO MARINERS N° 162 of 2024

Our Ref: **TM/PYD 0001/24**

29 November 2024



Transport Malta

Malta Transport Centre
Marsa, MRS 1917
Malta

Tel: (356) 2122 2203
Fax: (356) 2125 0365
Email: info.tm@transport.gov.mt

www.transport.gov.mt

Upgrading work on Pinto Wharf 4 and 5 and part of Lascaris Wharf in Il-Port il-Kbir

The Ports and Yachting Directorate, Transport Malta, notifies mariners and the general public that upgrading work on Pinto Wharf 4 and 5 and part of Lascaris Wharf in Il-Port il-Kbir, will be carried out.

The works will start on Wednesday 4th December 2024 and are expected to be completed by the end of June 2026.

The area formed by joining the points A, B, C, D and the intermediate coastline as shown on the attached chart, will be a No Entry area.

Point	Latitude (N)	Longitude (E)
A	35° 53'.652	014° 30'.801
B	35° 53'.621	014° 30'.828
C	35° 53'.504	014° 30'.653
D	35° 53'.542	014° 30'.619

A silt curtain will be laid within the above area and will be shifted depending on the area that is being worked upon. The position of the silt curtain will be marked using buoys with orange flashing lights.

The following vessels will be used:

- Safety boat,
- Workboat / tugs,
- Jack-up barges carrying different equipment,
- Dredger and
- Barges to transport material.

Only vessels involved in these works are permitted to enter the above-mentioned area, no vessel will be permitted to use Pinto Wharves 4 and 5, except those involved in the works.

Where the work requires the assistance of divers; the International Code of Signals flag "A" will be displayed while diving operations are being carried out.

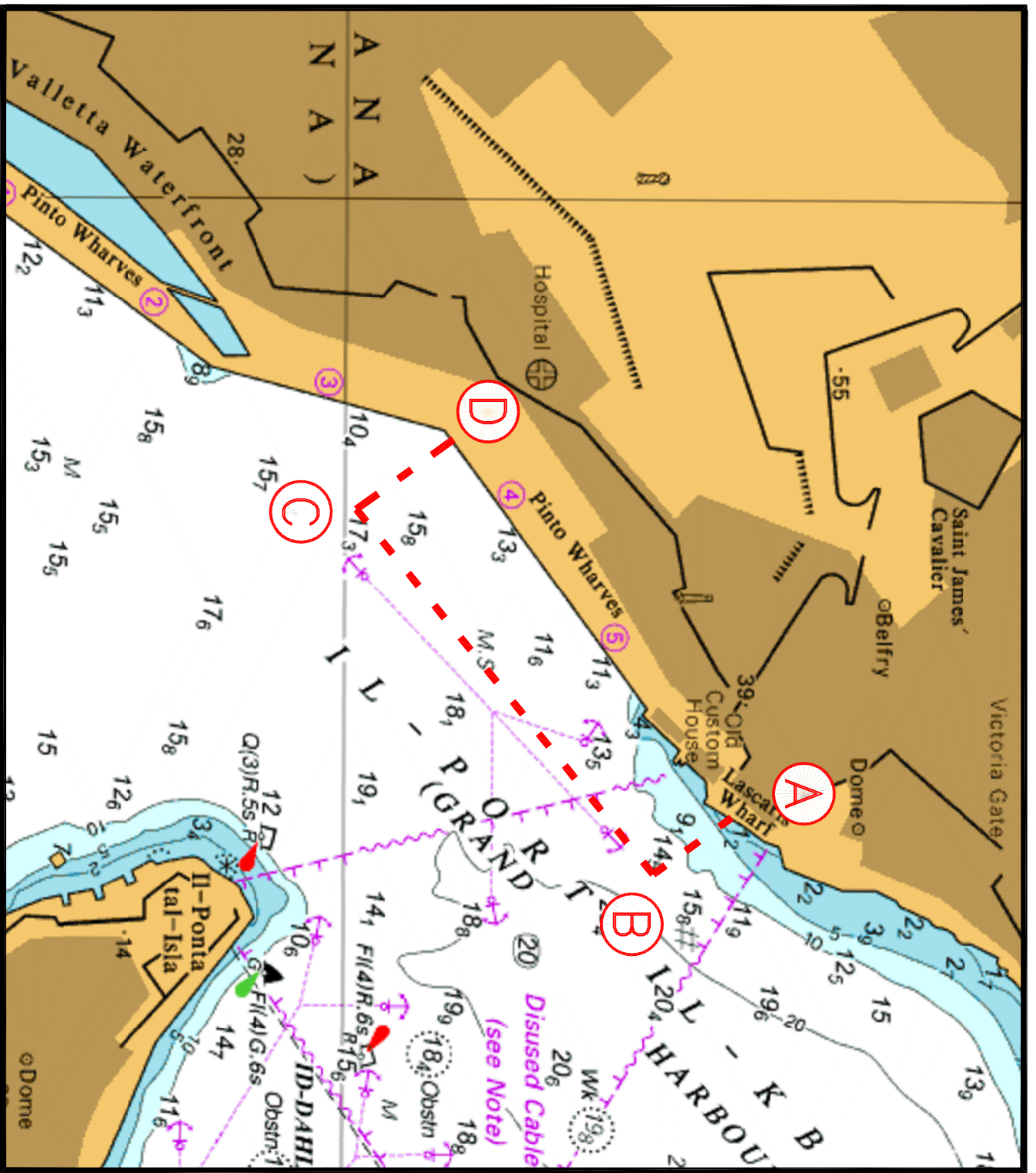


A safety distance of 50m from the above-mentioned is to be kept where possible.

Masters and vessel operators are to keep a sharp lookout and navigate at very slow speed (no wake) when in proximity of the above-mentioned area.

They are also to comply with any instructions given on VHF channel **12** and/or **16** by Valletta VTS

Chart affected: **BA 177**



© British Crown Copyright 1970, 1983, 1986, 1988, 1999, 2000
All rights reserved.

The UK Hydrographic Office makes the accompanying data
Available to Malta Maritime Authority (Transport Malta)
Under the terms and conditions of agreement HO 1427/020930/01.

DISCLAIMER

Whilst the UK Hydrographic Office has endeavoured to ensure
That the material supplied is suitable for the purpose described,
It accepts no liability (to the maximum extent permitted by law)
For any damage or loss of any nature arising from its use.
The material supplied is used entirely at the Recipient's own risk.