



PORTS AND YACHTING DIRECTORATE

LOCAL NOTICE TO MARINERS No 157 of 2022

Our Ref: **TM/PYD/132/89**

02 September 2022



Transport Malta

Malta Transport Centre,
Triq Pantar, Hal Lija, LJA 2021
Malta

Tel: (356) 2122 2203
Fax: (356) 2125 0365
Email: info.tm@transport.gov.mt

www.transport.gov.mt

Filming Production at Id-Daħla ta' Rinella - Das Boot IV

The Ports and Yachting Directorate, Transport Malta, notifies all mariners and owners of vessels, that filming activities will take place at Il-Bajja ta' Bighi including Id-Daħla ta' Rinella in Il-Port il-Kbir.

The filming will take place within the area formed by joining the points A, B, C, D, E, F, G, and the intermediate coastline, as shown on the attached chart.

Point	Latitude (N)	Longitude (E)
A	35° 53'.897	014° 31'.410
B	35° 53'.864	014° 31'.393
C	35° 53'.799	014° 31'.377
D	35° 53'.752	014° 31'.382
E	35° 53'.679	014° 31'.399
F	35° 53'.640	014° 31'.421
G	35° 53'.619	014° 31'.441

The filming will be held on the following dates and times:

Wednesday 14 th September 2022	between 0600 hours and 2000 hours,
Thursday 15 th September 2022	between 0600 hours and 2000 hours,
Friday 16 th September 2022	between 0600 hours and 2000 hours and
Saturday 17 th September 2022	between 1500 hours and 0500 hours Sunday.

The vessels "*Maria C*" and "*Alapoppy*" will be used during the filming and are to be given a wide berth.

Due to this filming, mariners and owners of vessels are informed that the above-mentioned area is to be kept clear from all vessels and no vessel will be allowed to enter or berth alongside any quay or jetty within the area from Tuesday 13th September 2022 morning up to Sunday 18th September 2022 at 0500 hour.



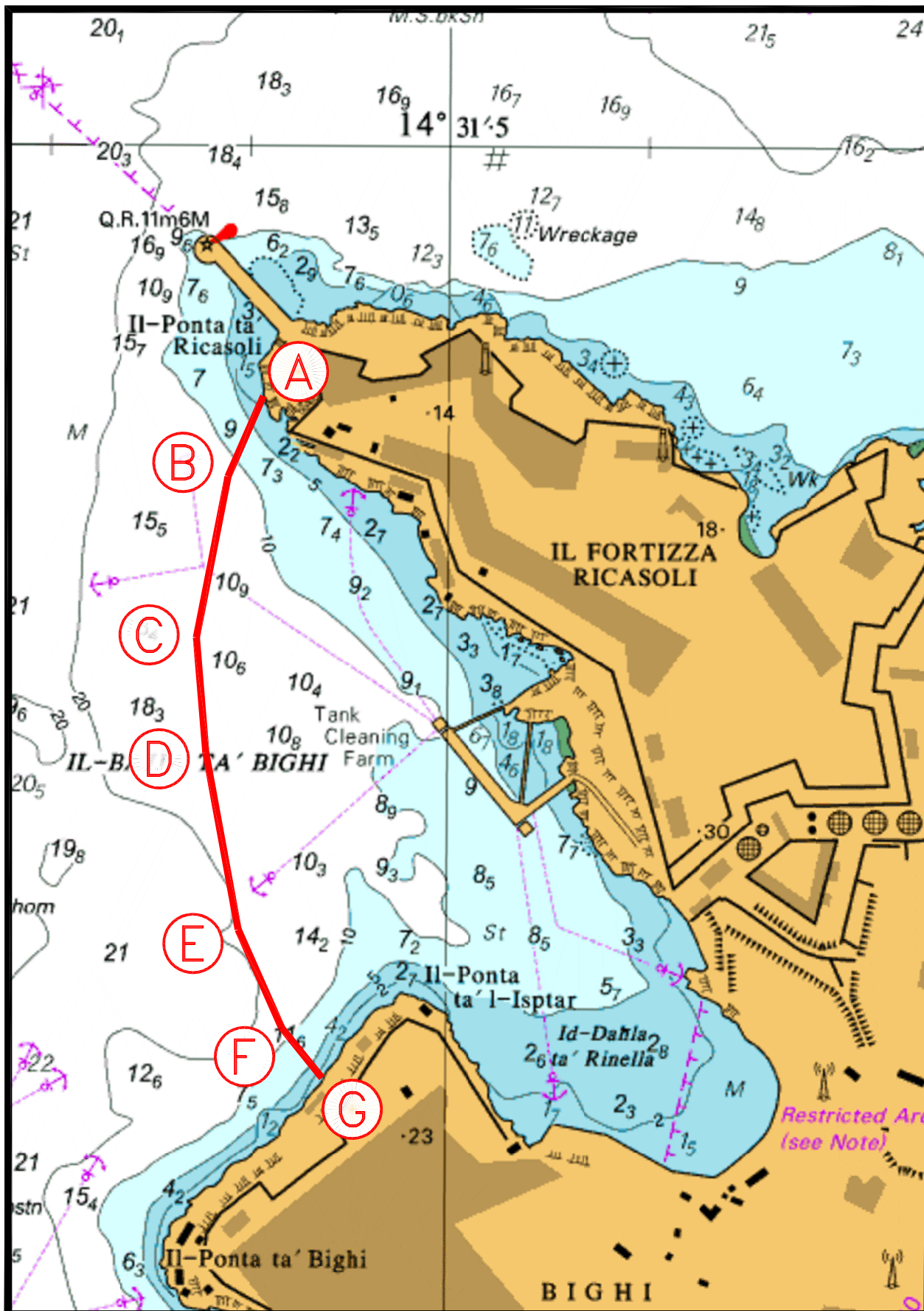
Transport Malta

Any vessels found within the area on the above-mentioned dates and times will be removed at the expense of the owner. No liability whatsoever will be accepted by the Authority for any damage that may be caused while removing the said vessels.

Mariners navigating in the vicinity of the indicated area on the mentioned dates and times are to navigate with caution and slow speed (no wake). They are to keep watch on VHF Channel **12 / 16** and are to cooperate with the filming crew and/or enforcement officers in the area.

Any instructions issued on VHF channel **12 / 16** by Valletta VTS are to be complied with.

Charts affected: **BA 177**



© British Crown Copyright 1970, 1983, 1986, 1988, 1999, 2000
 All rights reserved.

The UK Hydrographic Office makes the accompanying data
 Available to Malta Maritime Authority (Transport Malta)
 Under the terms and conditions of agreement HO 1427/020930/01.

DISCLAIMER

Whilst the UK Hydrographic Office has endeavoured to ensure
 That the material supplied is suitable for the purpose described,
 It accepts no liability (to the maximum extent permitted by law)
 For any damage or loss of any nature arising from its use.
 The material supplied is used entirely at the Recipient's own risk.