



PORTS AND YACHTING DIRECTORATE

LOCAL NOTICE TO MARINERS No 116 of 2021

Our Ref: **TM/PYD/22/99/1**

04 August 2021



Transport Malta

Malta Transport Centre,
Triq Pantar, Hal Lija, LJA 2021
Malta

Tel: (356) 2122 2203
Fax: (356) 2125 0365
Email: info.tm@transport.gov.mt

www.transport.gov.mt

Fireworks Display from Manoel Island - Feast of Stella Maris - Sliema

The Ports and Yachting Directorate, Transport Malta notifies Mariners that fireworks will be let off from the foreshore of Manoel Island in Sliema Creek, centred on points A and B as shown on attached chart:

Position	Latitude (N)	Longitude (E)
A	35° 54'.325	014° 30'.255
B	35° 54'.523	014° 30'.282

The fireworks display will take place as follows:

Sunday 15 th August 2021	between 1900 hours and 1915 hours.
Monday 16 th August 2021	between 1930 hours and 1950 hours.
Saturday 21 st August 2021	between 0900 hours and 0930 hours, between 1200 hours and 1215 hours, between 1850 hours and 1930 hours and between 2100 hours and 2230 hours.
Sunday 22 nd August 2021	between 0900 hours and 0910 hours, between 1200 hours and 1215 hours and between 2000 hours and 2130 hours.

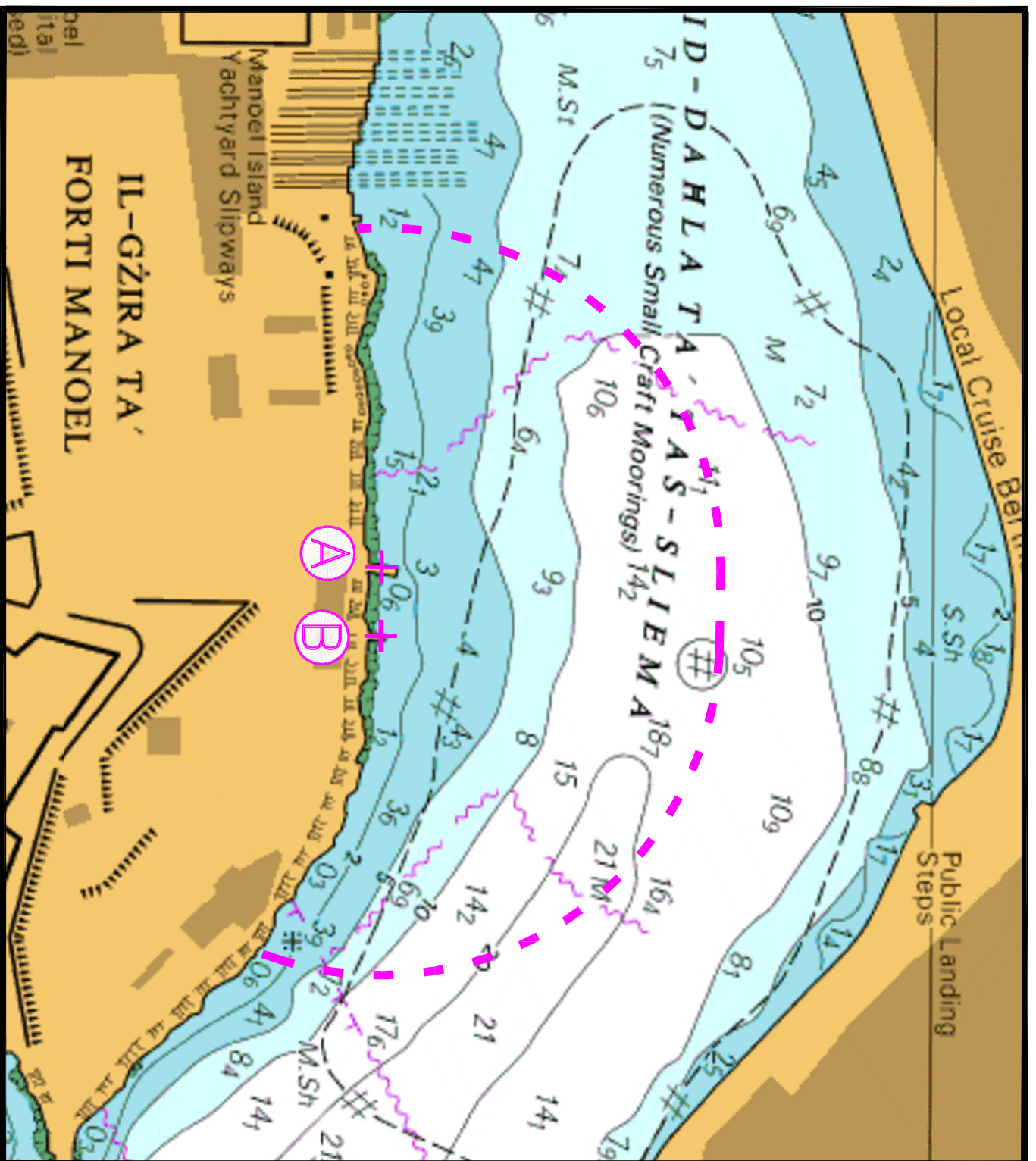
In view of the above, mariners are informed that navigation within 200 meters from the above-mentioned positions, point A and point B as shown on attached chart, in Marsamxett Harbour will be prohibited during the date and times of the fireworks displays as mentioned above. All craft moored within the indicated area (as shown on attached chart) are to be removed on the above-mentioned date and times of the fireworks displays.



The Ports and Yachting Directorate, Transport Malta will accept no Liabilities whatsoever for any vessels that are left lying in the area on the above-mentioned date and times

Mariners are to obey instructions and directions given on VHF channel 12 and/or 16 by Valletta VTS and any Enforcement Agency in the area.

Chart Affected: **BA 177**



© British Crown Copyright 1970, 1983, 1986, 1988, 1999, 2000
All rights reserved.

The UK Hydrographic Office makes the accompanying data
Available to Malta Maritime Authority (Transport Malta)
Under the terms and conditions of agreement HO 1427/020930/01.

DISCLAIMER

Whilst the UK Hydrographic Office has endeavoured to ensure
That the material supplied is suitable for the purpose described,
It accepts no liability (to the maximum extent permitted by law)
For any damage or loss of any nature arising from its use.
The material supplied is used entirely at the Recipient's own risk.