



PORTS AND YACHTING DIRECTORATE

LOCAL NOTICE TO MARINERS No 112 of 2020

Our Ref: **TM/PYD/63/95**

16 September 2020



Transport Malta

Malta Transport Centre
Marsa, MRS 1917
Malta

Tel: (356) 2122 2203
Fax: (356) 2125 0365
Email: info.tm@transport.gov.mt

www.transport.gov.mt

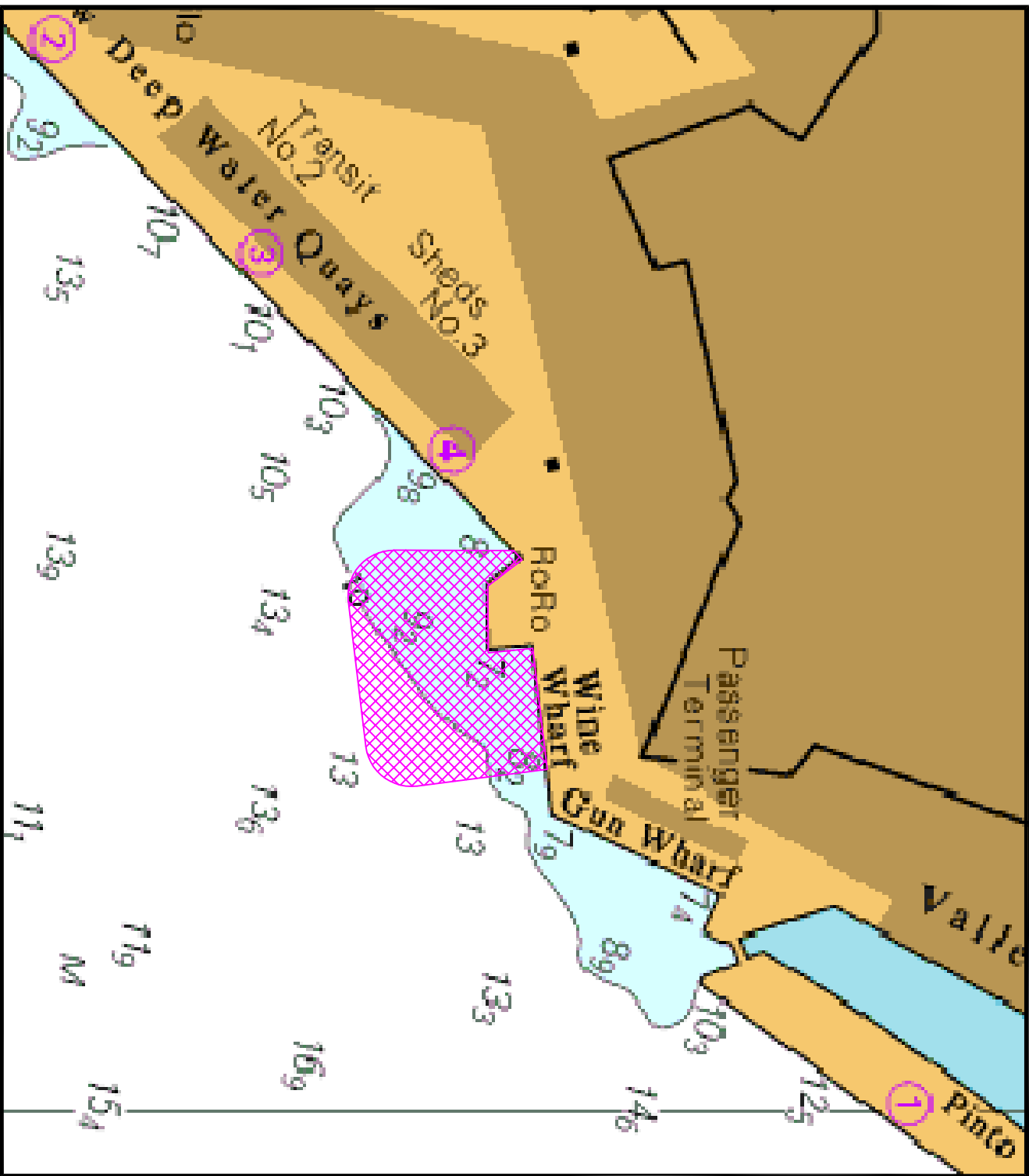
Benthic Survey at Wine Wharf in Grand Harbour

The Ports and Yachting Directorate, Transport Malta notifies mariners that a benthic survey will be carried out at Wine Wharf in Grand Harbour for ferry landing, between Friday 18th September 2020 and Friday 25th September 2020 (weather permitting) in the area shown hatched on attached chart.

The Benthic survey will be carried out by ROV which will be operated from land. Scuba divers will also be deployed to take samples and confirm findings, they will be displaying the international code of Signals flag "A".

Masters and operators of vessels are advised to keep a sharp lookout, navigate with caution and slow speed, no wake. Instructions given by Valletta Port Control (Valletta VTS) on VHF Channel 12 are to be complied with.

Chart affected: **BA 177**



© British Crown Copyright 1970, 1983, 1986, 1988, 1999, 2000
 All rights reserved.

The UK Hydrographic Office makes the accompanying data
 Available to Malta Maritime Authority (Transport Malta)
 Under the terms and conditions of agreement HO 1427/020930/01.

DISCLAIMER

Whilst the UK Hydrographic Office has endeavoured to ensure
 That the material supplied is suitable for the purpose described,
 It accepts no liability (to the maximum extent permitted by law)
 For any damage or loss of any nature arising from its use.
 The material supplied is used entirely at the Recipient's own risk.