



PORTS AND YACHTING DIRECTORATE



Transport Malta

## LOCAL NOTICE TO MARINERS N° 099 of 2023

Our Ref: **TM/PYD 0001/23**

14 June 2023

Malta Transport Centre,  
Triq Pantar, Hal Lija, LJA 2021  
Malta

Tel: (356) 2122 2203  
Fax: (356) 2125 0365  
Email: [info.tm@transport.gov.mt](mailto:info.tm@transport.gov.mt)

[www.transport.gov.mt](http://www.transport.gov.mt)

### Backfilling works for submarine cable between Bridge Wharf and Fuel Wharf

The Ports and Yachting Directorate, Transport Malta, notifies mariners and the general public that backfilling works will be carried out over the submarine cable between Bridge Wharf and Fuel Wharf at the Grand Harbour.

The backfilling work is to commence on Wednesday 14<sup>th</sup> June 2023 and is expected to be completed by Wednesday 19<sup>th</sup> July 2023.

The backfilling work will be carried out within the area A, B, C, D and the intermediate coastline as shown on the attached chart.

Point	LATITUDE (N)	LONGITUDE (E)
A	35° 52'.918	014° 30'.171
B	35° 52'.923	014° 30'.049
C	35° 52'.948	014° 30'.041
D	35° 52'.942	014° 30'.175

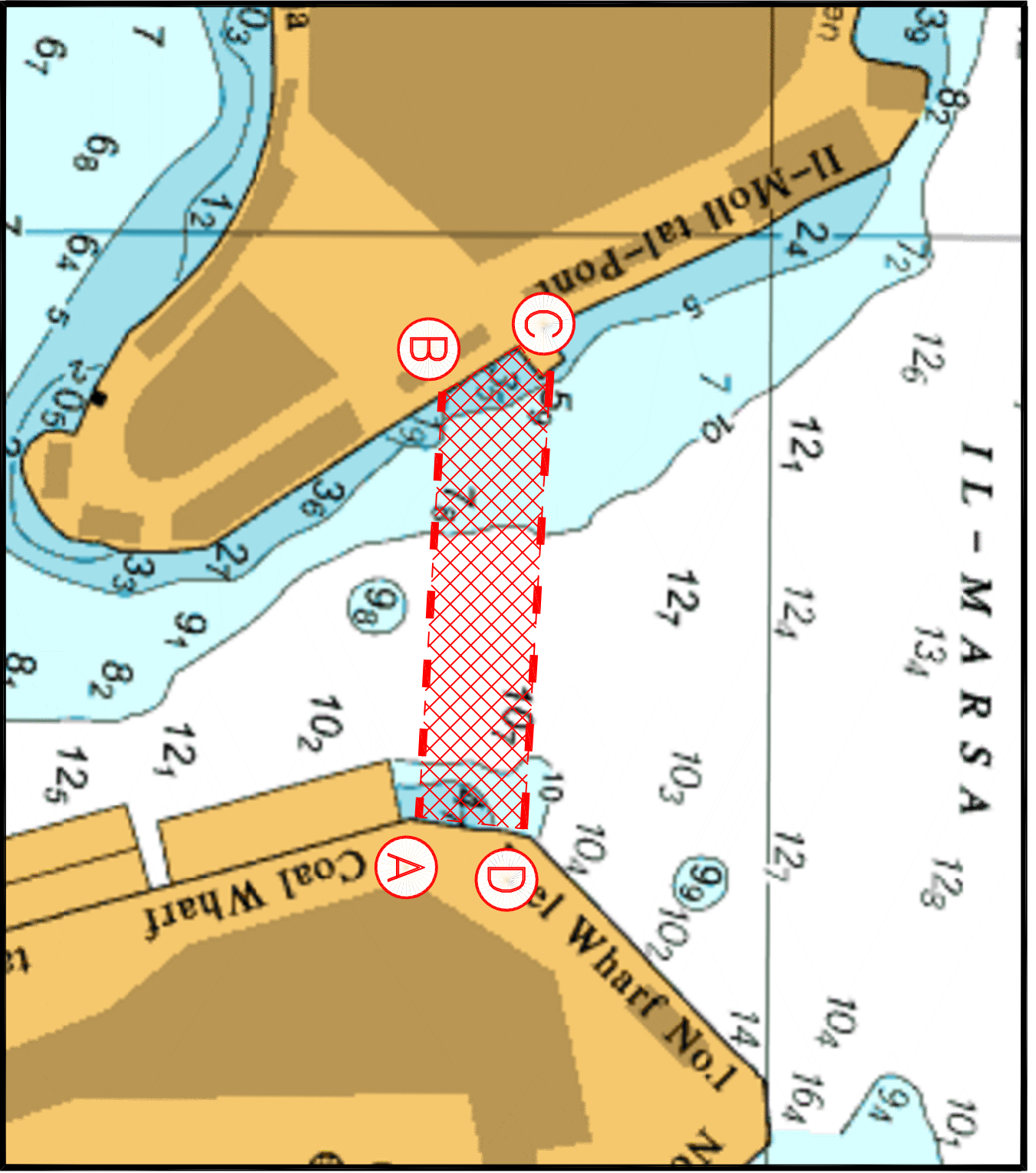
The backfilling work will be carried out from a barge which will be moored within the above-mentioned area while the work is being carried out. Some of the works will be carried out by scuba divers. They will be assisted by a support vessel which shall exhibit the appropriate lights and shape signals in accordance with the Regulations for the Prevention of Collisions at sea. 1972 (COLREGS) and with the International Code of Signals.

All traffic movements in the vicinity of the area may be restricted. Permission to transit the area is to be obtained from Valletta VTS prior to approaching the area.

Masters and vessel operators are to keep a sharp lookout and navigate at very slow speed (no wake) when in proximity of the above-mentioned area.

They are also to comply with any instructions issued on VHF channel 12 / 16 by Valletta VTS and any enforcement agency on site.

Chart affected: **BA 177**



© British Crown Copyright 1970, 1983, 1986, 1988, 1999, 2000  
All rights reserved.

The UK Hydrographic Office makes the accompanying data  
Available to Malta Maritime Authority (Transport Malta)  
Under the terms and conditions of agreement HO 1427/020930/01.

**DISCLAIMER**

Whilst the UK Hydrographic Office has endeavoured to ensure  
That the material supplied is suitable for the purpose described,  
It accepts no liability (to the maximum extent permitted by law)  
For any damage or loss of any nature arising from its use.  
The material supplied is used entirely at the Recipient's own risk.