



Transport Malta

PORTS AND YACHTING DIRECTORATE

## LOCAL NOTICE TO MARINERS N° 098 of 2024

Our Ref: **TM/PYD/132/92**

Malta Transport Centre  
Marsa, MRS 1917  
Malta

Tel: (356) 2122 2203  
Fax: (356) 2125 0365  
Email: [info.tm@transport.gov.mt](mailto:info.tm@transport.gov.mt)

[www.transport.gov.mt](http://www.transport.gov.mt)

12 August 2024

### Special Mark Buoys Delineating the 200 and 300 metre Speed Restriction Zones

The Ports and Yachting Directorate, Transport Malta notifies mariners that in addition to the permanent speed limit buoys, special marker buoys will be placed around the Maltese Islands to delineate the 200 and 300 metre speed restriction zones (10 Knots and 5 Knots) from the shore. The placement of the buoys is seasonal, from June to October but may still be in place after this date.

Special Mark Buoys 1.5 metres in diameter, fitted with a light flashing yellow 1 every 4 seconds "*Fl.Y.4s (Jun-Oct)*" and a 2 nautical miles range, shall be placed in the following positions:

|    | Bays            | Speed    | Latitude    | Longitude    |
|----|-----------------|----------|-------------|--------------|
| A1 | Marsalforn      | 10 Knots | 36° 04'.564 | 014° 15'.843 |
| A2 | Comino          | 10 Knots | 36° 01'.303 | 014° 20'.379 |
| A3 | Qawra           | 10 Knots | 35° 57'.732 | 014° 25'.817 |
| A4 | Dragonara Point | 10 Knots | 35° 55'.729 | 014° 29'.748 |
| A5 | Dragut Point    | 10 Knots | 35° 54'.500 | 014° 31'.007 |

Further to the above yellow cylindrical buoys which are 0.9 metres in diameter, flashing yellow 1 every 4 seconds "*Fl.Y.4s (Jun-Oct)*" and having a 2 nautical miles range, will be placed in the following positions:



Transport Malta

| Bays |                  | Speed    | Latitude    | Longitude    |
|------|------------------|----------|-------------|--------------|
| B1   | Ramla l-Hamra    | 10 Knots | 36° 03'.827 | 014° 17'.018 |
| B3   | San Niklaw       | 10 Knots | 36° 01'.264 | 014° 19'.804 |
| B6   | Santa Marija     | 10 Knots | 36° 01'.216 | 014° 20'.108 |
| B14  | Cirkewwa         | 10 Knots | 35° 59'.059 | 014° 19'.789 |
| B15  | Armier           | 10 Knots | 35° 59'.527 | 014° 21'.460 |
| B16  | Little Armier    | 10 Knots | 35° 59'.627 | 014° 21'.602 |
| B17  | Mellieha         | 10 Knots | 35° 59'.153 | 014° 22'.681 |
| B18  | Mellieha         | 10 Knots | 35° 58'.809 | 014° 21'.921 |
| B19  | Mellieha         | 10 Knots | 35° 58'.466 | 014° 21'.400 |
| B23  | Mellieha         | 10 Knots | 35° 58'.190 | 014° 21'.987 |
| B24  | Mellieha         | 10 Knots | 35° 58'.394 | 014° 22'.711 |
| B26  | Il-Gzejjer South | 10 Knots | 35° 57'.942 | 014° 24'.601 |
| B28  | Ras il-Ghallis   | 10 Knots | 35° 57'.400 | 014° 25'.968 |
| B29  | San Giljan       | 10 Knots | 35° 55'.221 | 014° 29'.857 |
| B30  | Marsascala       | 10 Knots | 35° 51'.907 | 014° 34'.432 |
| B31  | San Tumas        | 10 Knots | 35° 51'.320 | 014° 34'.331 |
| B32  | Xorb l-Ghagin    | 10 Knots | 35° 50'.298 | 014° 34'.030 |
| B33  | St. Peter's Pool | 10 Knots | 35° 49'.903 | 014° 33'.897 |
| B34  | Dellimara        | 10 Knots | 35° 49'.388 | 014° 33'.857 |
| B35  | Il-Gnejna        | 10 Knots | 35° 55'.473 | 014° 20'.354 |
| B36  | Ghajn Tuffieha   | 10 Knots | 35° 55'.800 | 014° 20'.495 |
| B37  | Il-Mixquqa       | 10 Knots | 35° 55'.965 | 014° 20'.464 |

The following buoys placed at Mgarr ix-Xini – Gozo, Blue Lagoon – Comino, Mellieha – off the beach, Il-Gzejjer North and Xemxija inner, delineate a 5 Knots maximum speed limit.

|     |                              |         |             |              |
|-----|------------------------------|---------|-------------|--------------|
| B2  | Mgarr ix-Xini                | 5 Knots | 36° 00'.906 | 014° 16'.445 |
| B4  | San Niklaw Bay (Fairway 1)   | 5 Knots | 36° 01'.167 | 014° 19'.770 |
| B5  | San Niklaw Bay (Fairway 9D)  | 5 Knots | 36° 01'.039 | 014° 19'.773 |
| B7  | Santa Marija Bay (Fairway 1) | 5 Knots | 36° 01'.031 | 014° 20'.210 |
| B8  | Santa Marija Bay (Fairway 2) | 5 Knots | 36° 01'.111 | 014° 20'.210 |
| B9  | Blue Lagoon Outer            | 5 Knots | 36° 01'.004 | 014° 19'.226 |
| B10 | Blue Lagoon (Fairway 5)      | 5 Knots | 36° 00'.965 | 014° 19'.332 |
| B11 | Blue Lagoon (Fairway 3)      | 5 Knots | 36° 00'.952 | 014° 19'.310 |
| B12 | Blue Lagoon (Fairway 2)      | 5 Knots | 36° 00'.913 | 014° 19'.346 |
| B13 | Blue Lagoon (Fairway 1)      | 5 Knots | 36° 00'.852 | 014° 19'.401 |
| B20 | Mellieha                     | 5 Knots | 35° 58'.398 | 014° 21'.247 |
| B21 | Mellieha                     | 5 Knots | 35° 58'.269 | 014° 21'.299 |
| B22 | Mellieha                     | 5 Knots | 35° 58'.133 | 014° 21'.480 |
| B25 | Il-Gzejjer North             | 5 Knots | 35° 58'.076 | 014° 23'.974 |
| B27 | Xemxija                      | 5 Knots | 35° 57'.027 | 014° 23'.508 |

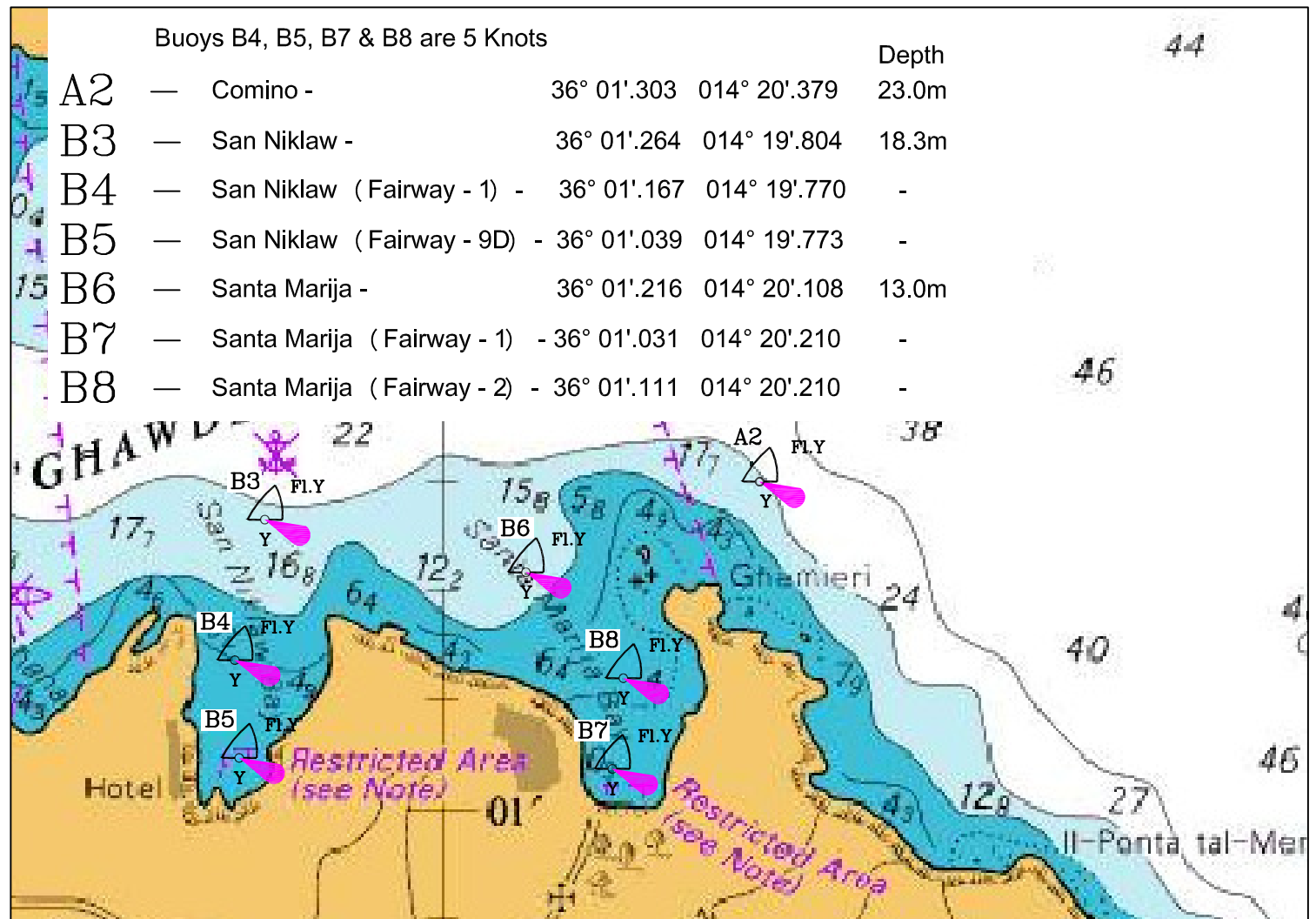
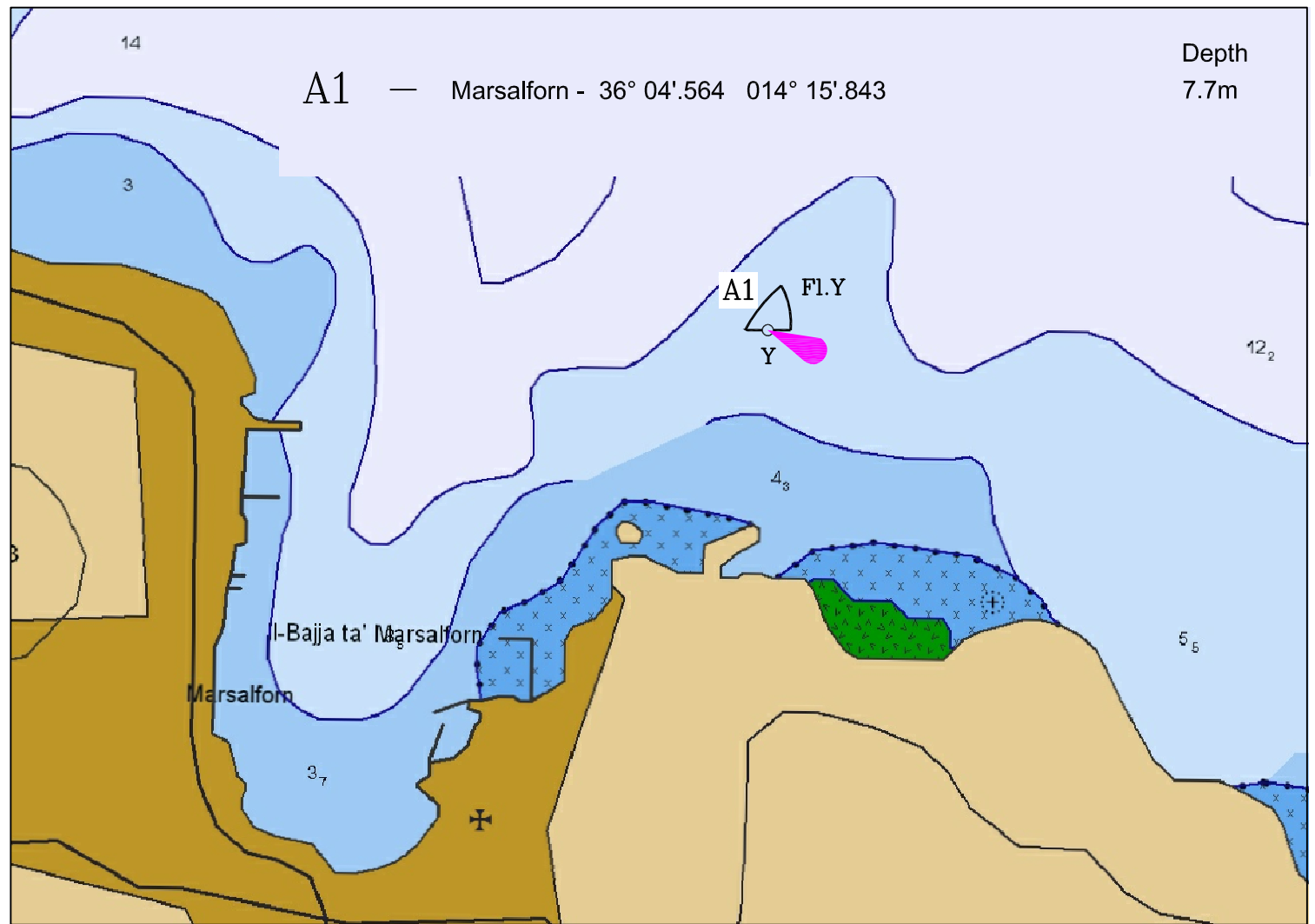


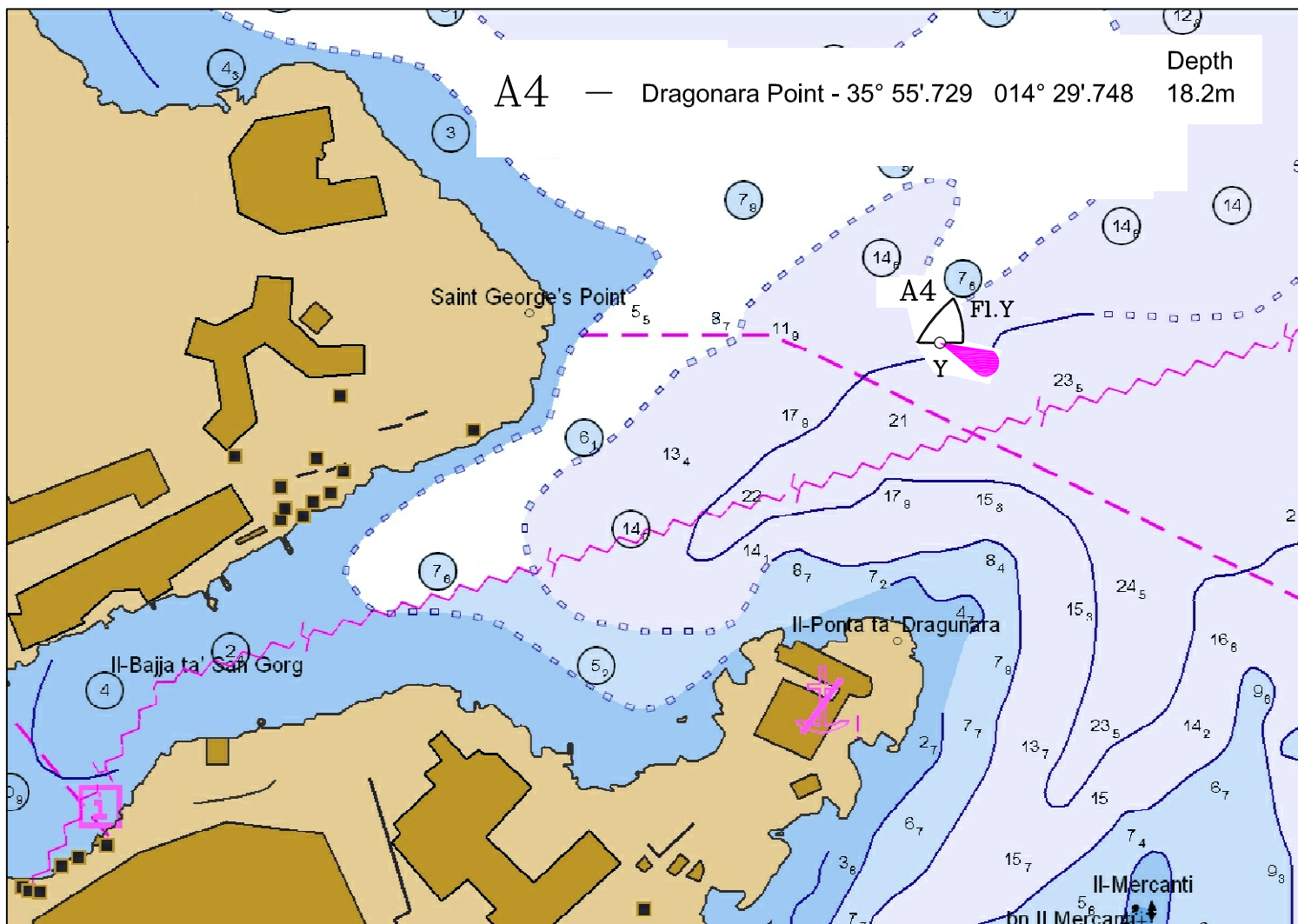
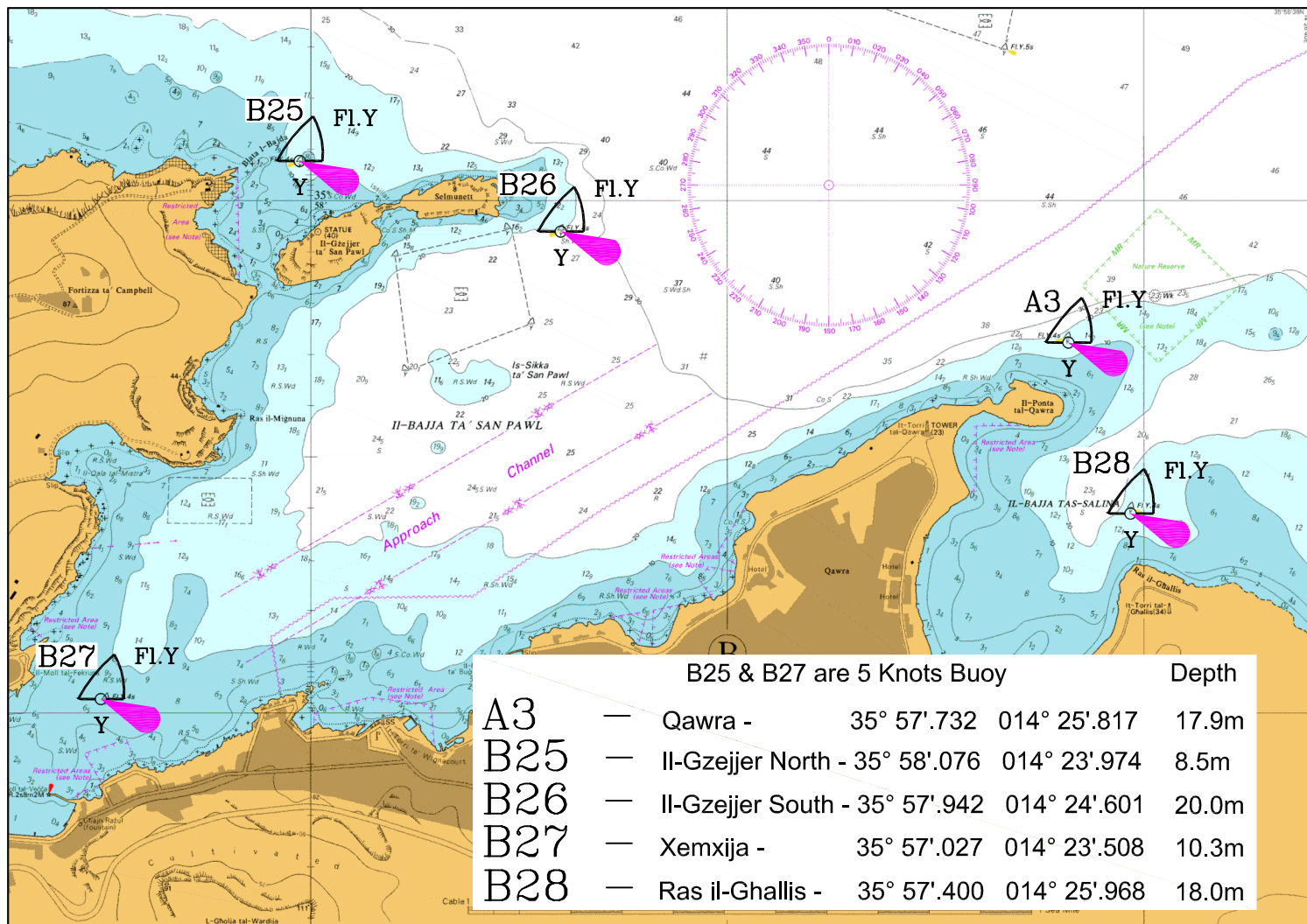
Transport Malta

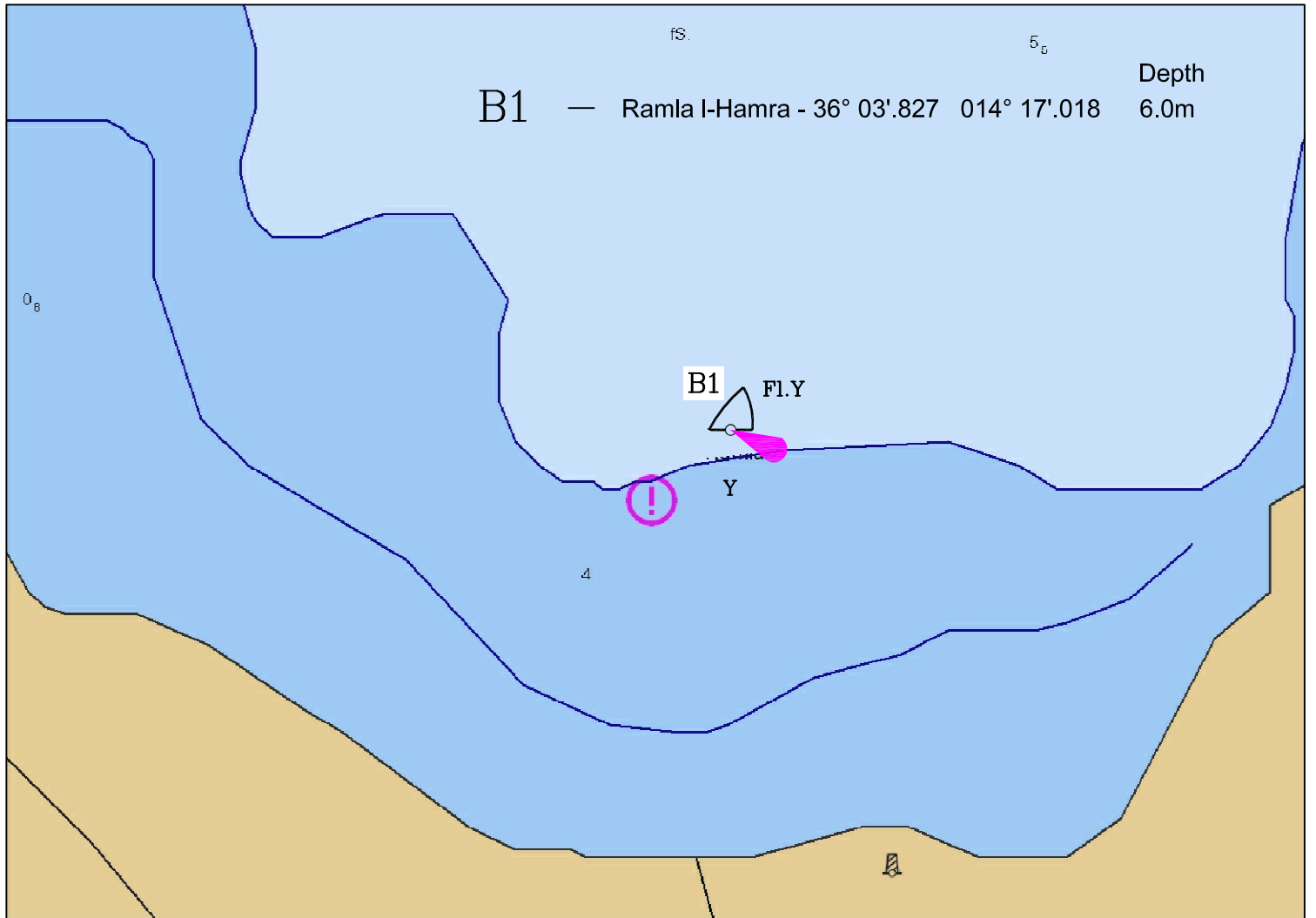
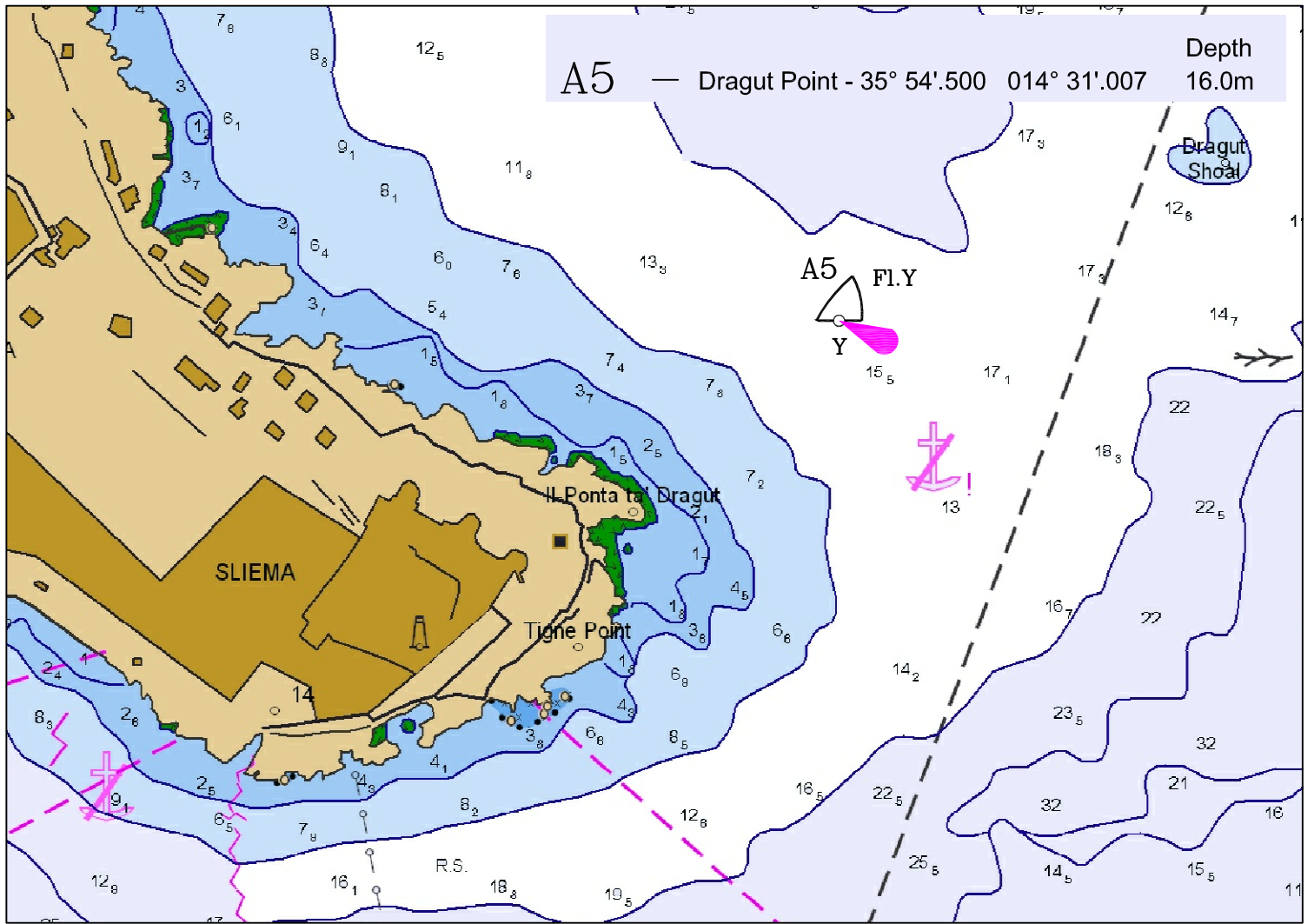
Buoys indicate the speed that should never be exceeded, and in any case, mariners are always reminded to proceed at a safe speed subject to the prevailing circumstances and conditions.

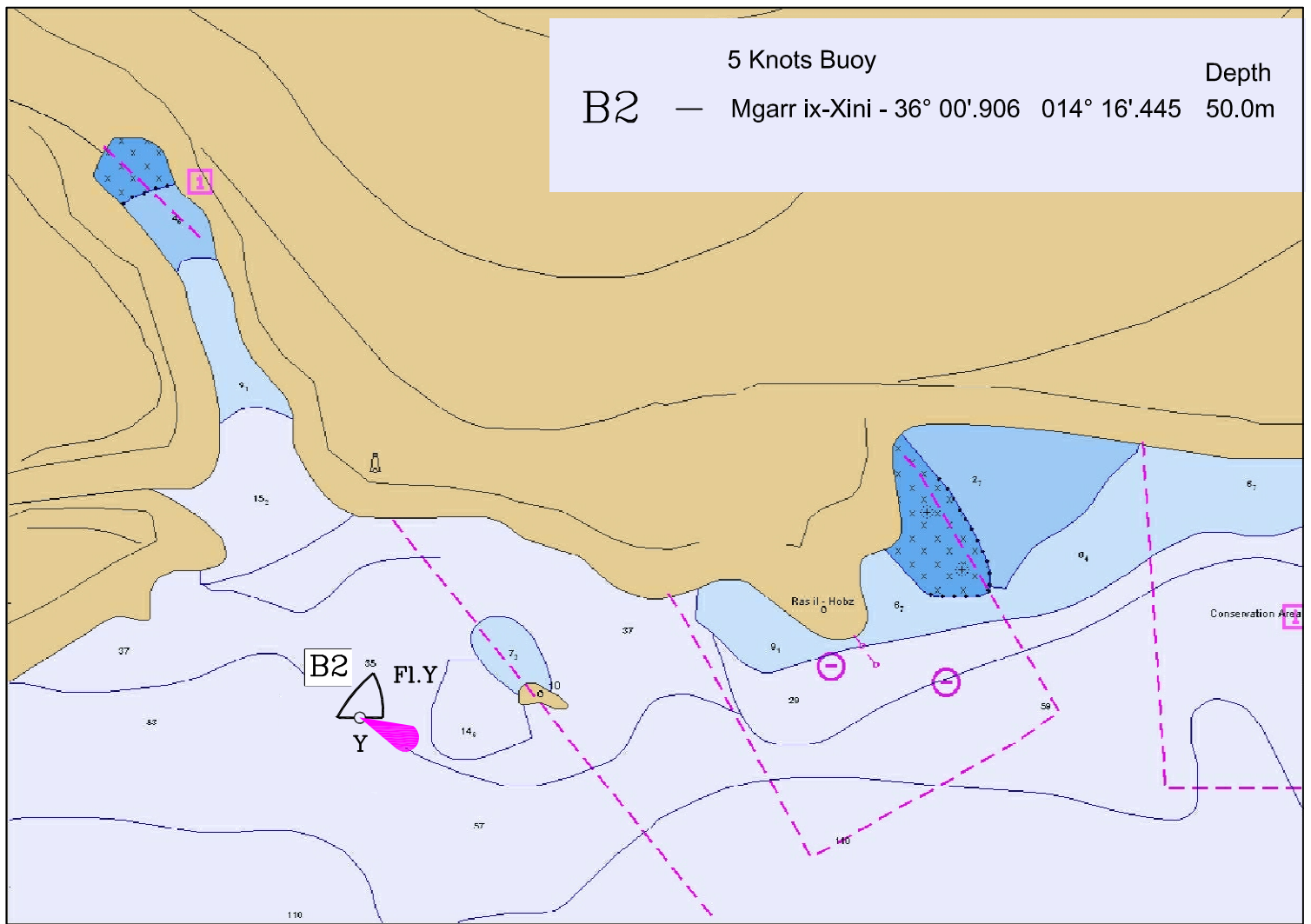
Mariners are further reminded that it is prohibited to moor any vessel to any of the above buoys and any other buoy owned by the Transport Malta and that the speed restriction is in place all year round even without the buoys in place. The deployment and the removal of the buoys may be delayed in the event of unexpected circumstances.

Charts affected: **BA 36, 177, 211A, 211B, 2537, 2538**

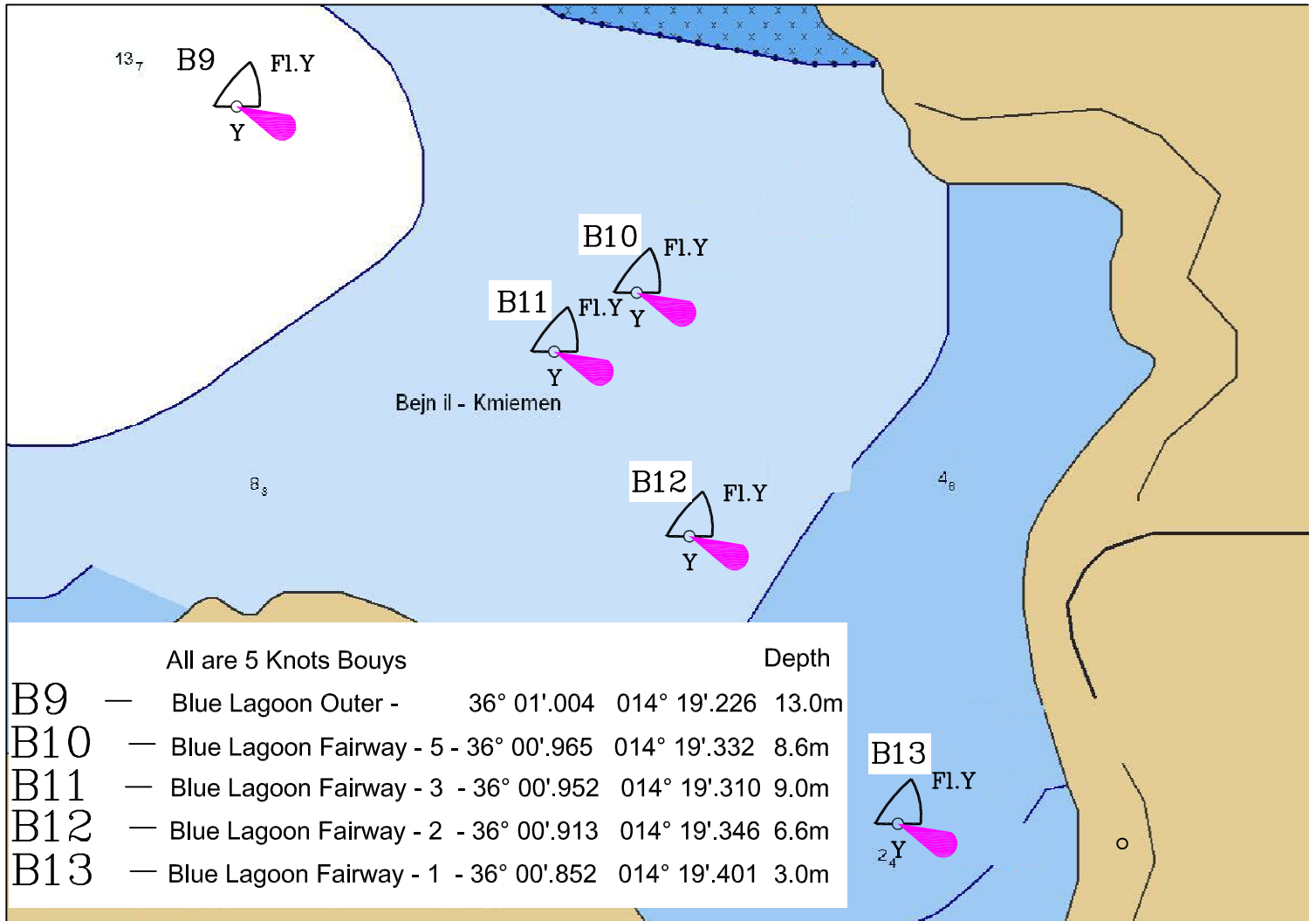








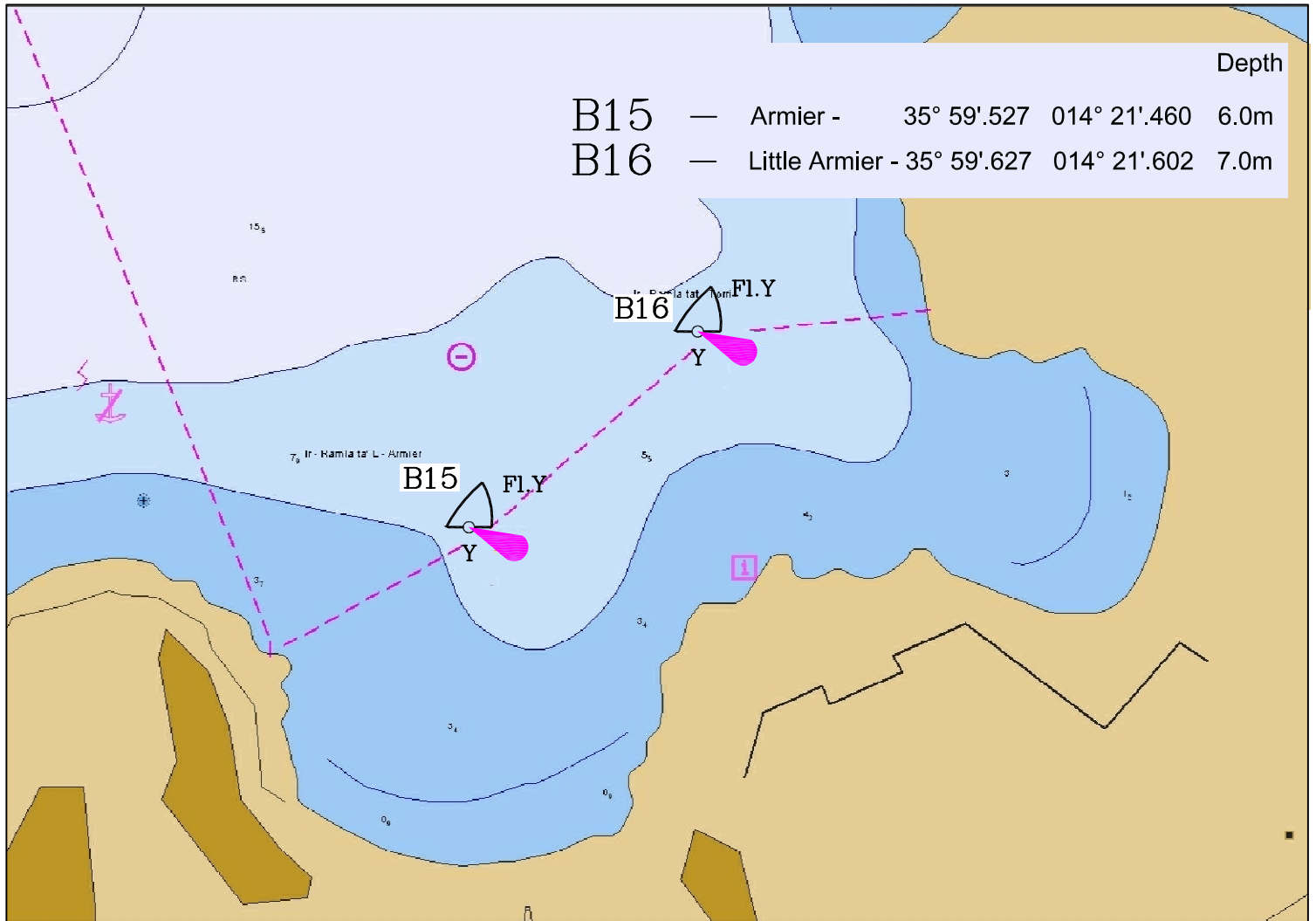
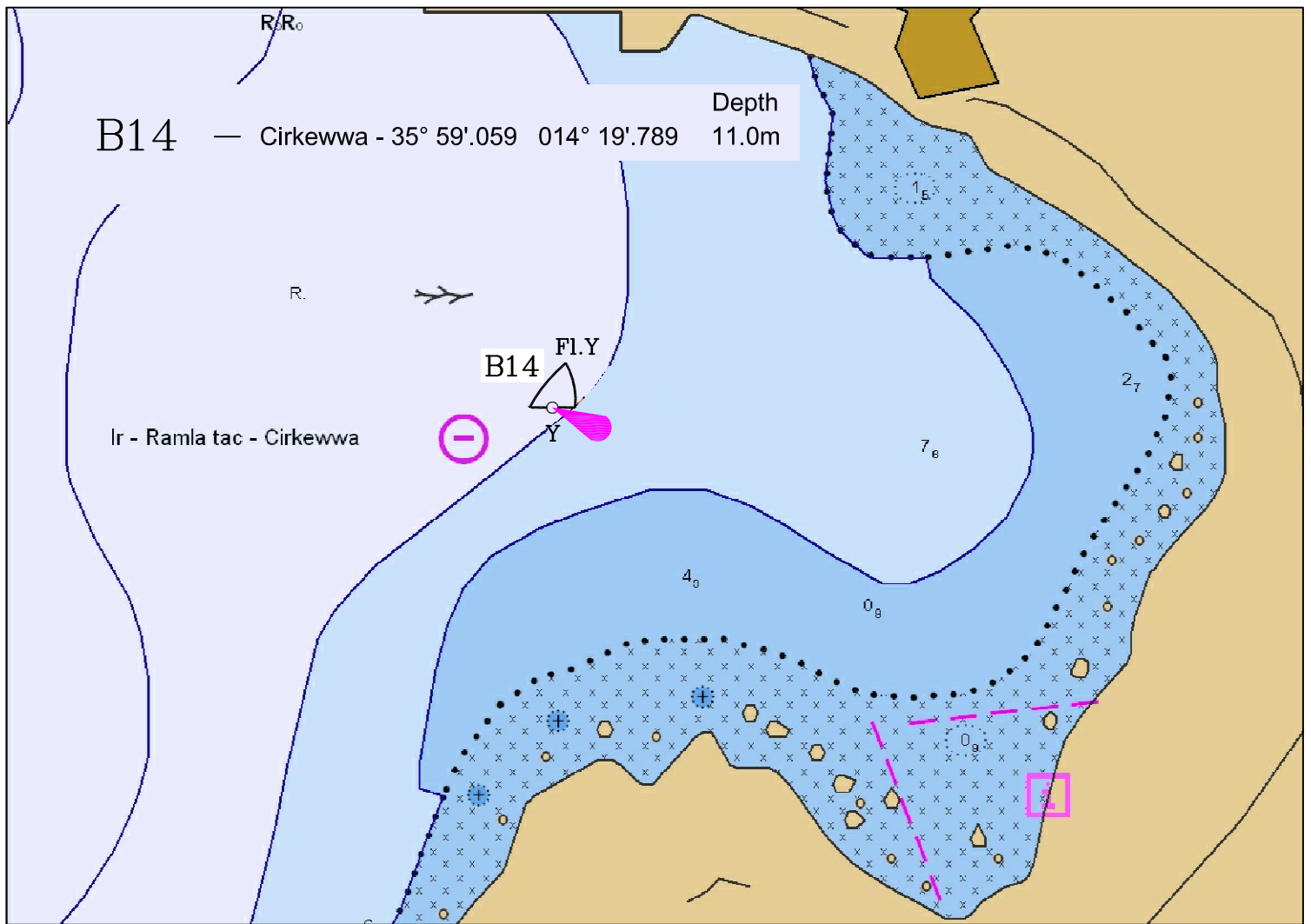
5 Knots Buoy  
**B2** — Mgarr ix-Xini - 36° 00'.906 014° 16'.445 50.0m



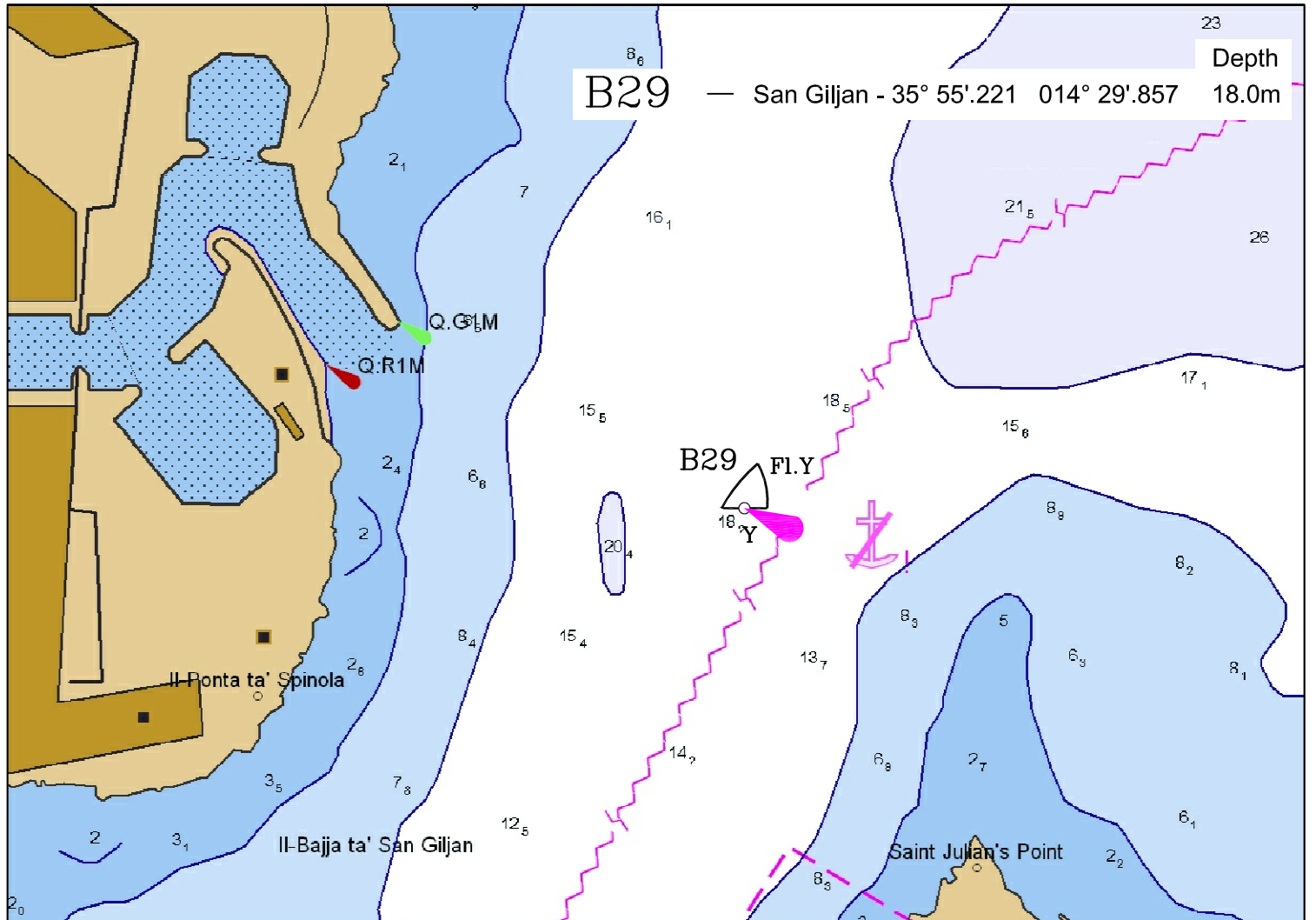
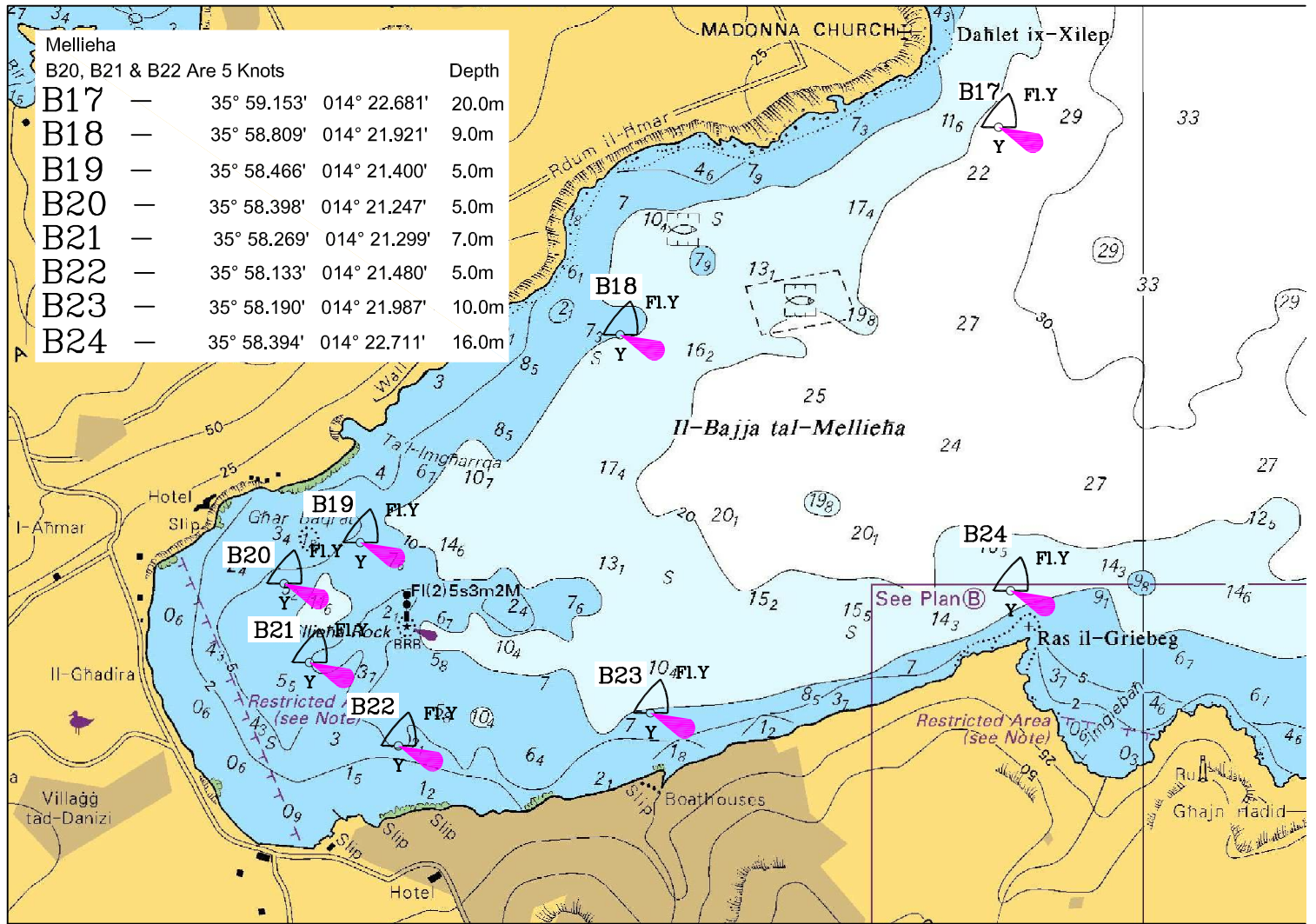
All are 5 Knots Buoys

- |            |  | Depth |
|------------|--|-------|
| <b>B9</b>  | Blue Lagoon Outer - 36° 01'.004 014° 19'.226       | 13.0m |
| <b>B10</b> | Blue Lagoon Fairway - 5 - 36° 00'.965 014° 19'.332 | 8.6m  |
| <b>B11</b> | Blue Lagoon Fairway - 3 - 36° 00'.952 014° 19'.310 | 9.0m  |
| <b>B12</b> | Blue Lagoon Fairway - 2 - 36° 00'.913 014° 19'.346 | 6.6m  |
| <b>B13</b> | Blue Lagoon Fairway - 1 - 36° 00'.852 014° 19'.401 | 3.0m  |

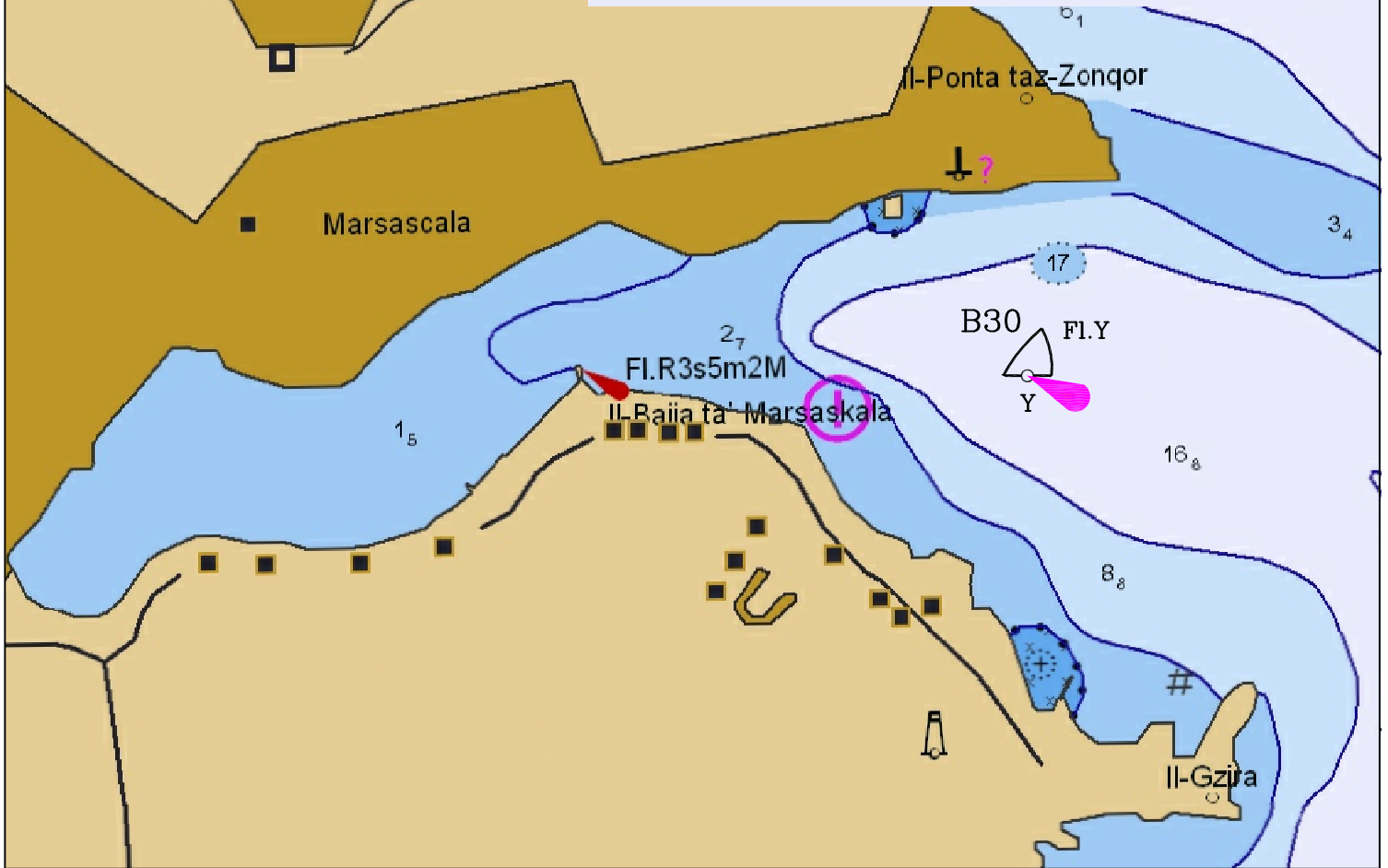
**B13** Fl.Y



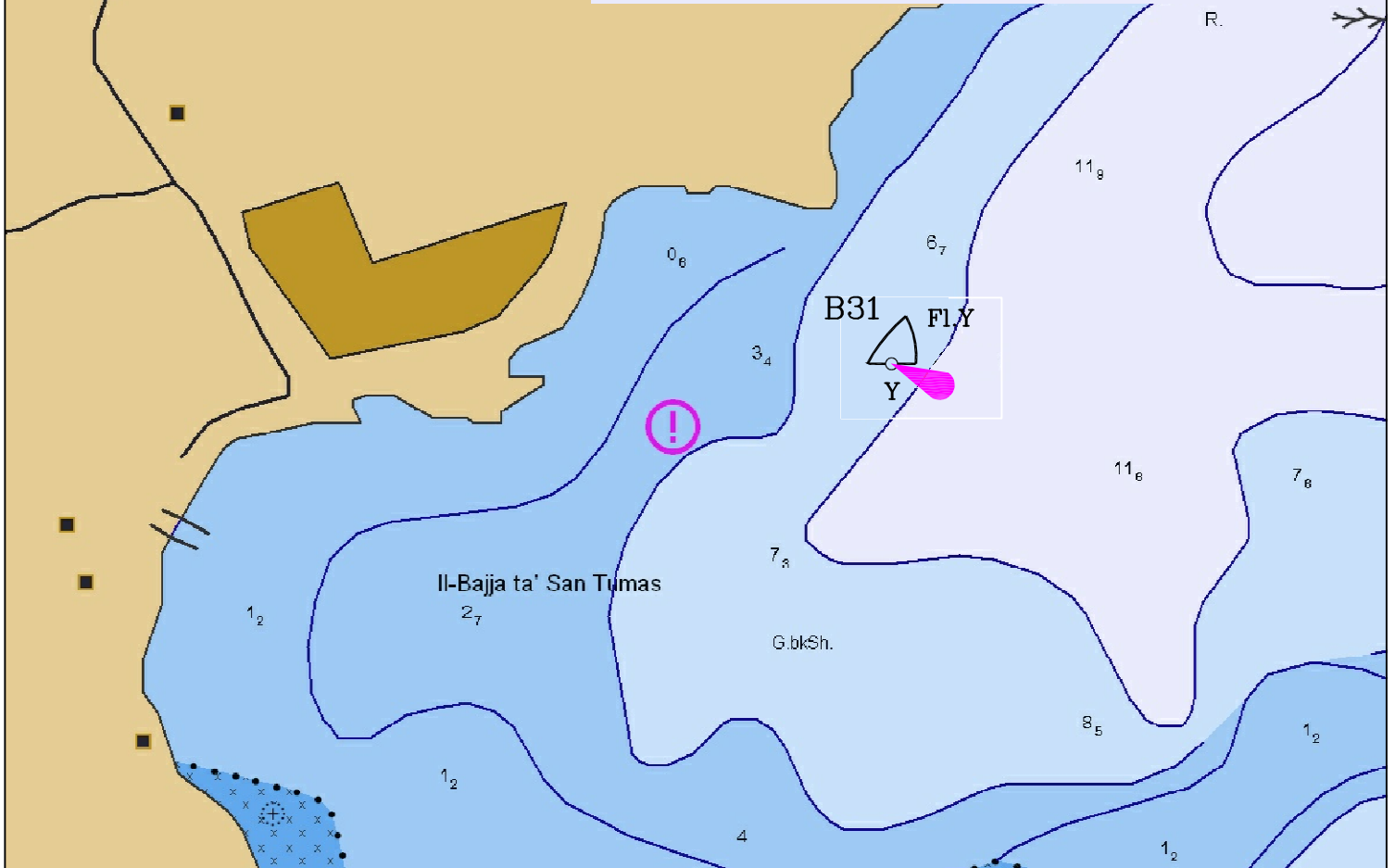


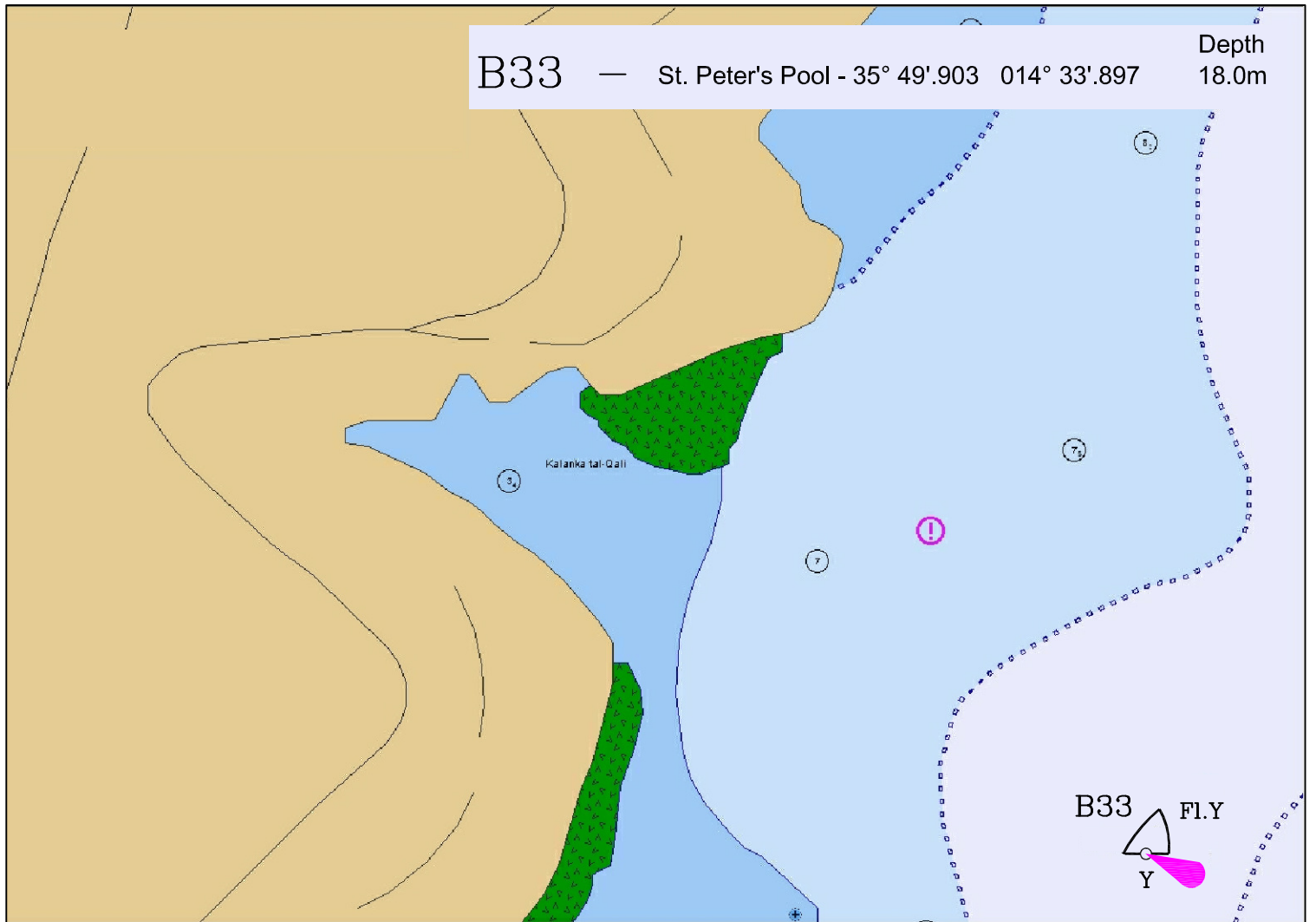
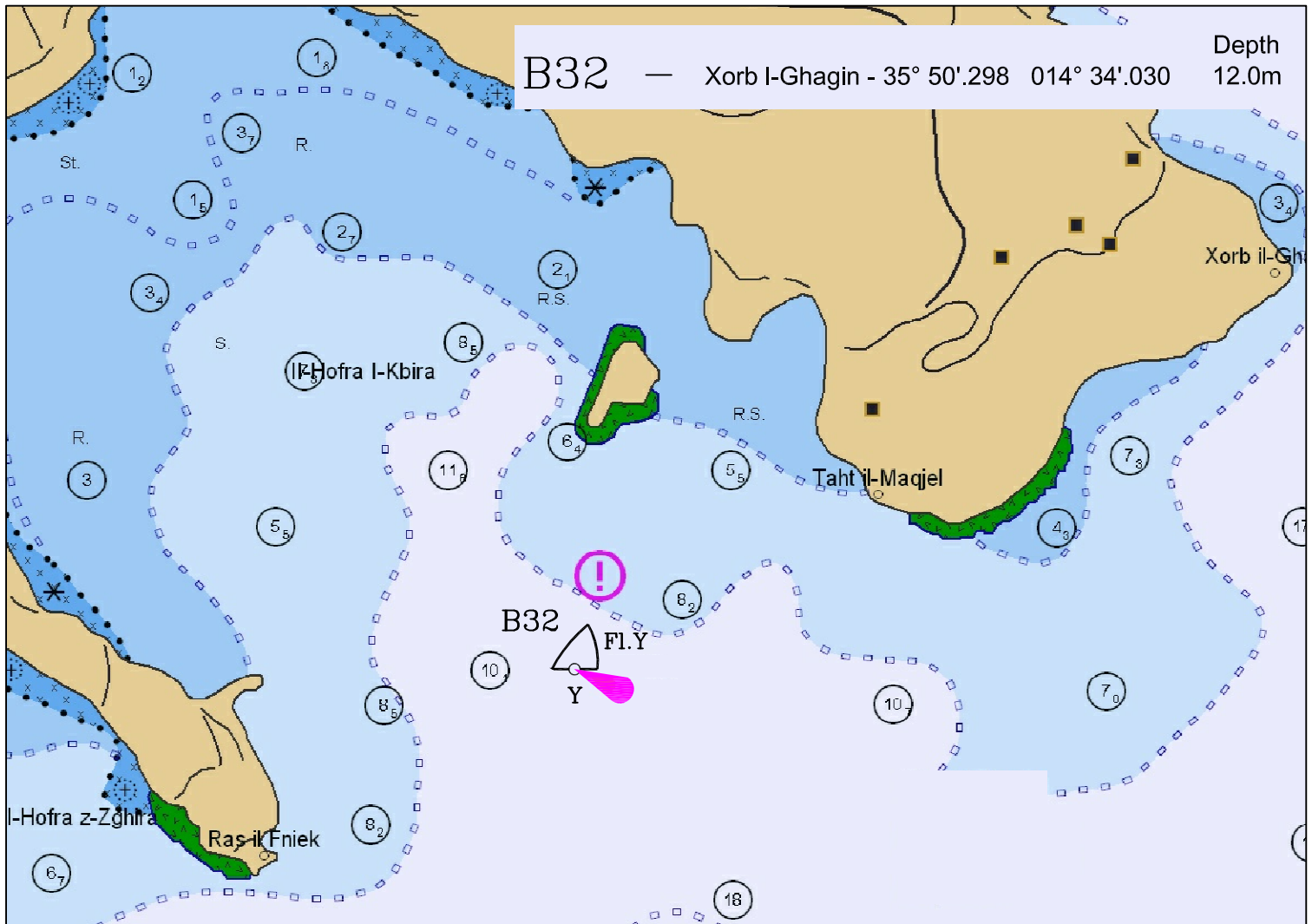


B30 — Marsascalea - 35° 51'.907 014° 34'.432 Depth 16.0m



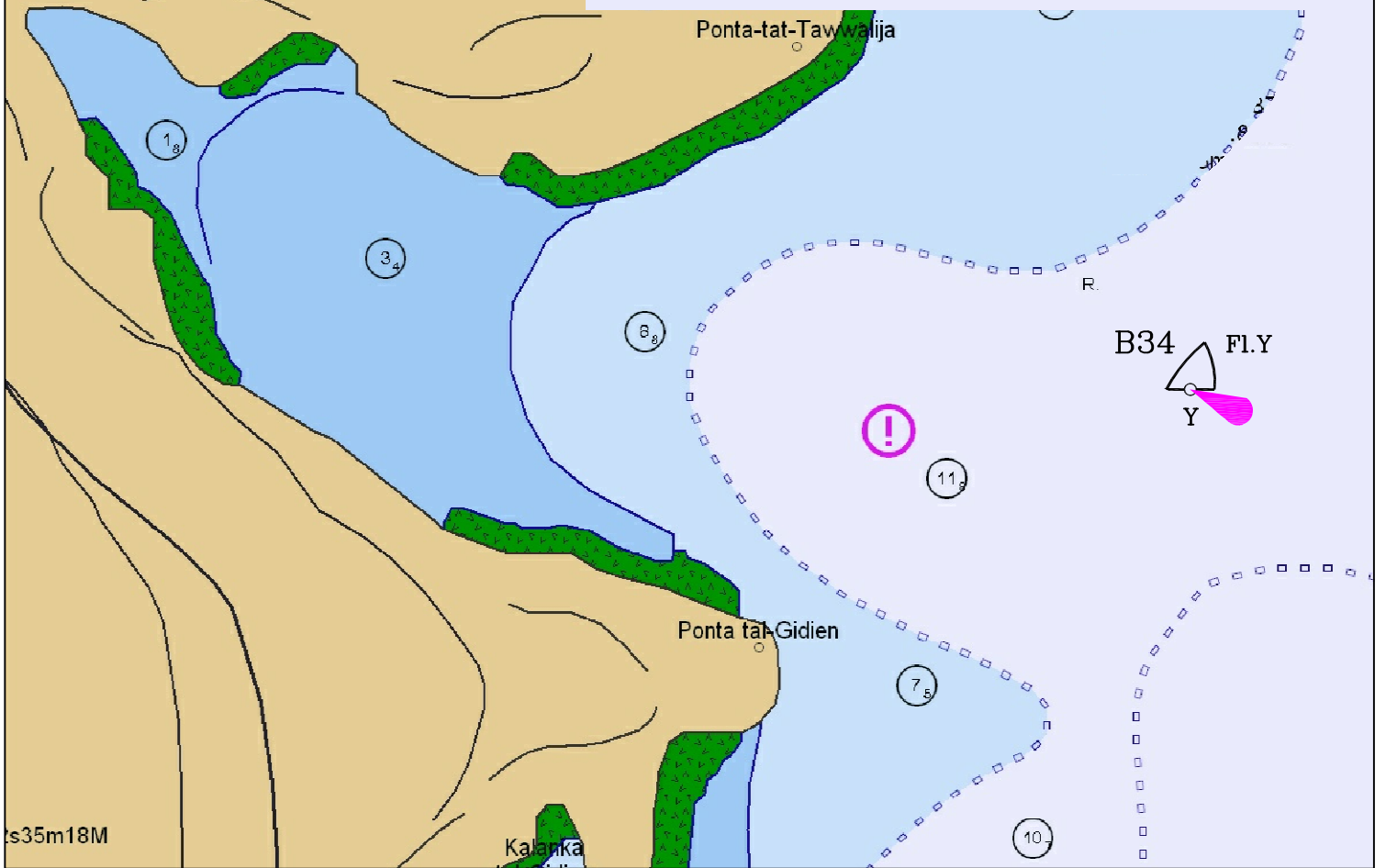
B31 — San Tumas - 35° 51'.320 014° 34'.331 Depth 8.0m





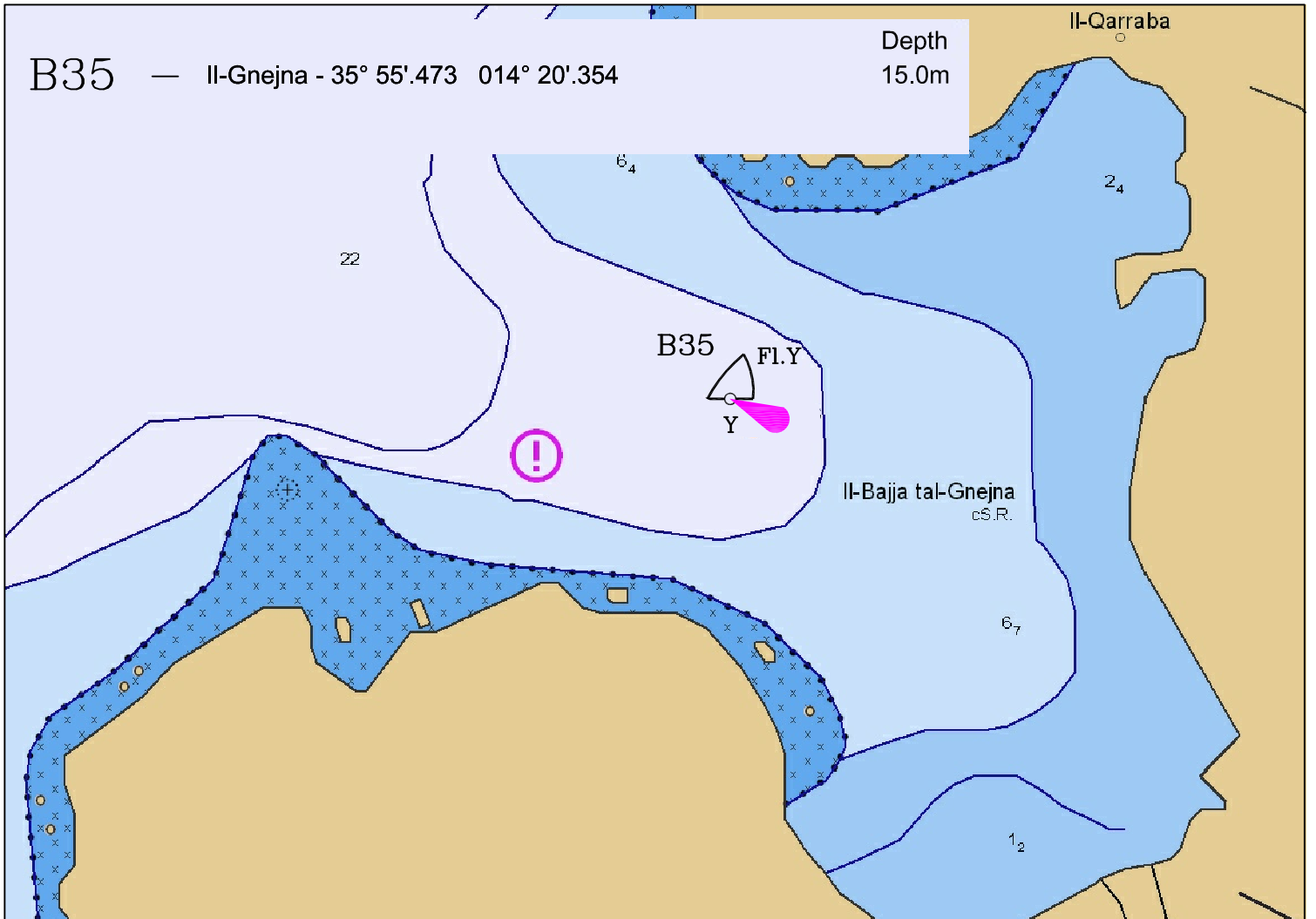
B34 — Dellimara - 35° 49'.388 014° 33'.857

Depth  
13.0m



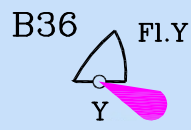
B35 — Il-Gnejna - 35° 55'.473 014° 20'.354

Depth  
15.0m



B36 — Ghajn Tuffieha - 35° 55'.800 014° 20'.495

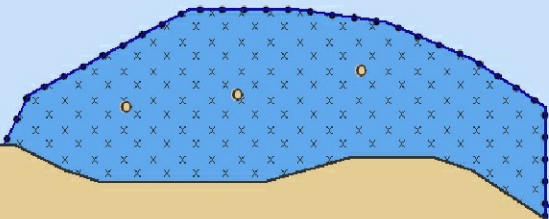
Depth  
7.0m



7<sub>8</sub>

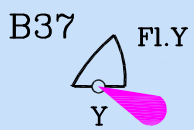
Ir-Ramla ta' Ghajn Tuffieha

2<sub>1</sub>



B37 — Il-Mixquqa - 35° 55'.965 014° 20'.464

Depth  
7.0m



0<sub>8</sub>

Ir-Ramla ta' Il-Mixquqa

7<sub>8</sub>

