



PORTS AND YACHTING DIRECTORATE

## LOCAL NOTICE TO MARINERS No 055 of 2022

Our Ref: **TM/PYD/132/89**

06 May 2022



**Transport Malta**

Malta Transport Centre,  
Triq Pantar, Hal Lija, LJA 2021  
Malta

Tel: (356) 2122 2203  
Fax: (356) 2125 0365  
Email: [info.tm@transport.gov.mt](mailto:info.tm@transport.gov.mt)

[www.transport.gov.mt](http://www.transport.gov.mt)

### **Filming from different localities - From Malta to Oblivion**

The Ports and Yachting Directorate, Transport Malta, notifies all mariners and sea vessel operators that filming activities will take place at different localities.

Filming will take place on the listed dates for each locality, from 0600 hours to 2000 hours, on each day.

#### Il-Bajja tal-Dwejra (Gozo).

Filming is scheduled to be carried out on Wednesday 11<sup>th</sup> and Thursday 12<sup>th</sup> May 2022. If due to adverse weather conditions filming cannot be carried out on the listed days, filming will be carried out on any days within the following 7 days.

The filming will be carried out within the area bounded by the imaginary lines A to B, B to C, and the intermediate coastline, as shown on the attached chart 1.

Due to this filming the area mentioned above will not be accessible to any vessels except those involved in the filming.

#### Along one of the following lines listed below.

Filming is scheduled to be carried out on Wednesday 18<sup>th</sup> May 2022.

If due to adverse weather conditions filming cannot be carried out on the listed day, filming will be carried out on any days within the following 7 days.

The filming will be carried out off the coast along any of the imaginary lines D to E, F to G, H to I or J to K, as shown on the attached chart 2, depending on weather conditions.



Transport Malta

Il-Bajja tal-Ġnejna.

Filming is scheduled to be carried out on Thursday 19<sup>th</sup> May 2022.

If due to adverse weather conditions filming cannot be carried out on the listed day, filming will be carried out on any days within the following 7 days.

The filming will be carried out within the area bounded by the imaginary lines L to M, and the intermediate coastline, as shown on the attached chart 3.

Due to this filming the area mentioned above will not be accessible to any vessels except those involved in the filming.

Inside the Grand Harbour and off Rinella.

Filming is scheduled to be carried out on Tuesday 14<sup>th</sup> June 2022.

If due to adverse weather conditions filming cannot be carried out on the listed day, filming will be carried out on any days within the following 7 days.

The filming will be carried out from the following positions M, N, O, and P, as shown on the attached chart 4.

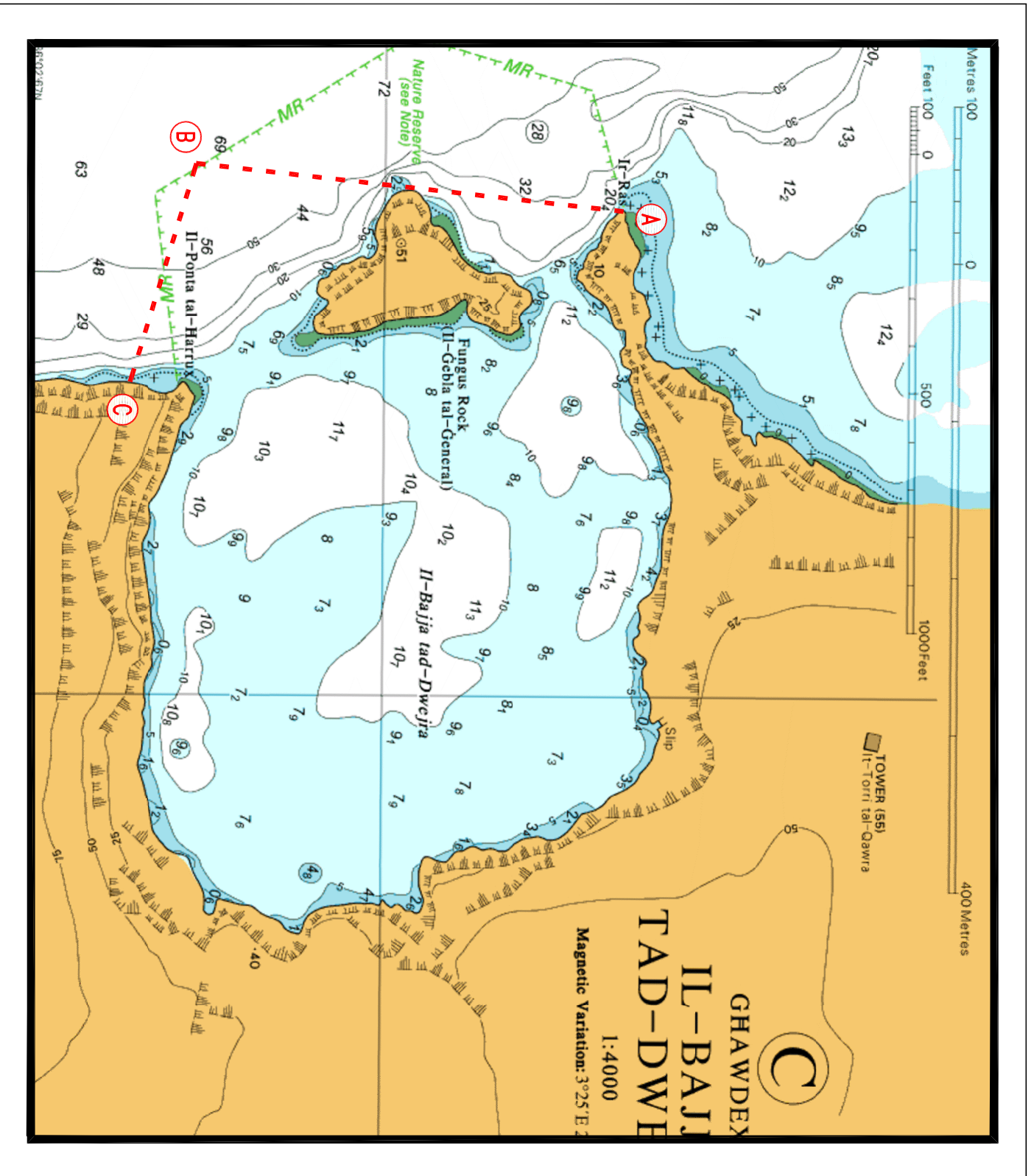
The vessels “*Nautical One*”, “*Nautical Two*”, “*SSR 105573*”, “*CHIKO*”, “*Xanna*”, “*Swift*”, “*Grecale*”, “*S10714*”, and “*S22930*” will be used during the filming. All vessels are to give these vessels a wide berth during the above-mentioned dates and times.

Mariners and owners of vessels are informed that, for filming purposes, a clear horizon is being requested. Consequently, vessels in the vicinity, will not be allowed to drop anchor or remain underway whilst filming is taking place in the area.

Mariners navigating in the vicinity of the indicated area on the mentioned dates and times are to keep watch on VHF Channel **12 / 16** and are to cooperate with the filming crew and/or enforcement personnel in the area.

Any instructions issued on VHF channel **12 / 16** by Valletta VTS are to be complied with.

Charts affected: **BA 177, 2537**

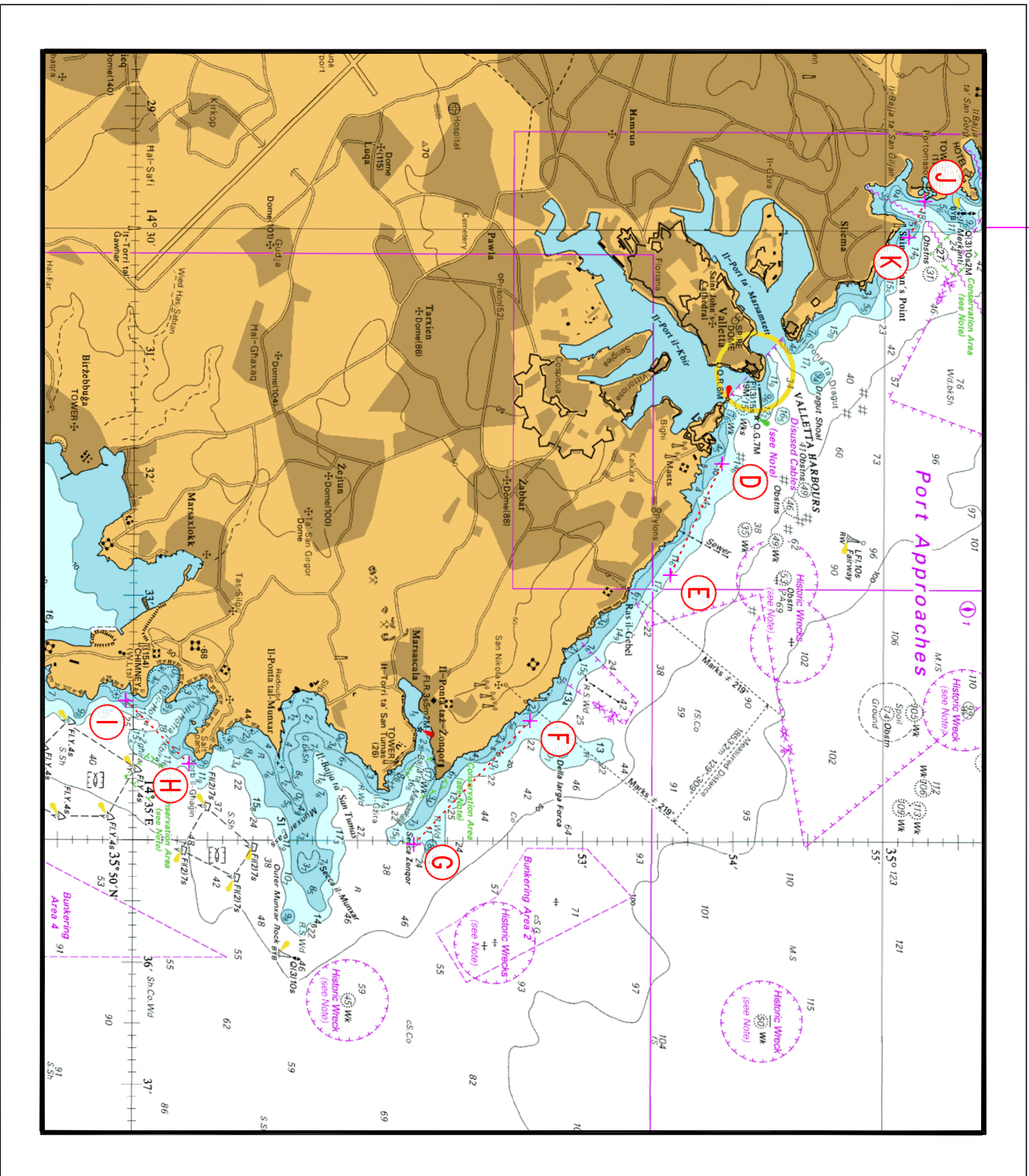


© British Crown Copyright 1970, 1983, 1986, 1988, 1999, 2000  
All rights reserved.

The UK Hydrographic Office makes the accompanying data  
Available to Malta Maritime Authority (Transport Malta)  
Under the terms and conditions of agreement HO 1427/020930/01.

**DISCLAIMER**

Whilst the UK Hydrographic Office has endeavoured to ensure  
That the material supplied is suitable for the purpose described,  
It accepts no liability (to the maximum extent permitted by law)  
For any damage or loss of any nature arising from its use.  
The material supplied is used entirely at the Recipient's own risk.



© British Crown Copyright 1970, 1983, 1986, 1988, 1999, 2000  
 All rights reserved.

The UK Hydrographic Office makes the accompanying data  
 Available to Malta Maritime Authority (Transport Malta)  
 Under the terms and conditions of agreement HO 1427/020930/01.

**DISCLAIMER**

Whilst the UK Hydrographic Office has endeavoured to ensure  
 That the material supplied is suitable for the purpose described,  
 it accepts no liability (to the maximum extent permitted by law)  
 For any damage or loss of any nature arising from its use.  
 The material supplied is used entirely at the Recipient's own risk.



© British Crown Copyright 1970, 1983, 1986, 1988, 1999, 2000  
All rights reserved.

The UK Hydrographic Office makes the accompanying data  
Available to Malta Maritime Authority (Transport Malta)  
Under the terms and conditions of agreement HO 1427/020930/01.

**DISCLAIMER**

Whilst the UK Hydrographic Office has endeavoured to ensure  
That the material supplied is suitable for the purpose described,  
it accepts no liability (to the maximum extent permitted by law)  
For any damage or loss of any nature arising from its use.  
The material supplied is used entirely at the Recipient's own risk.

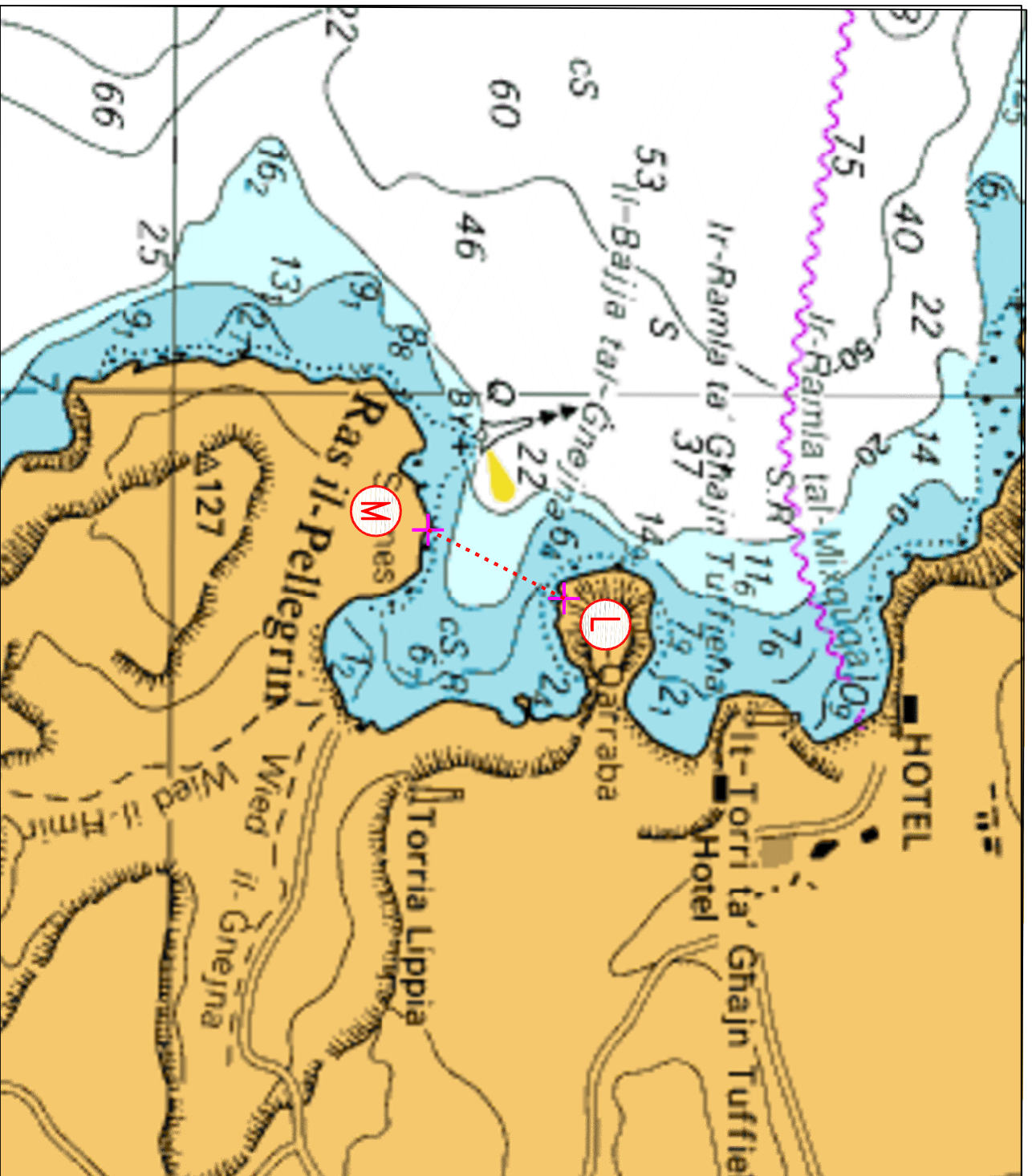
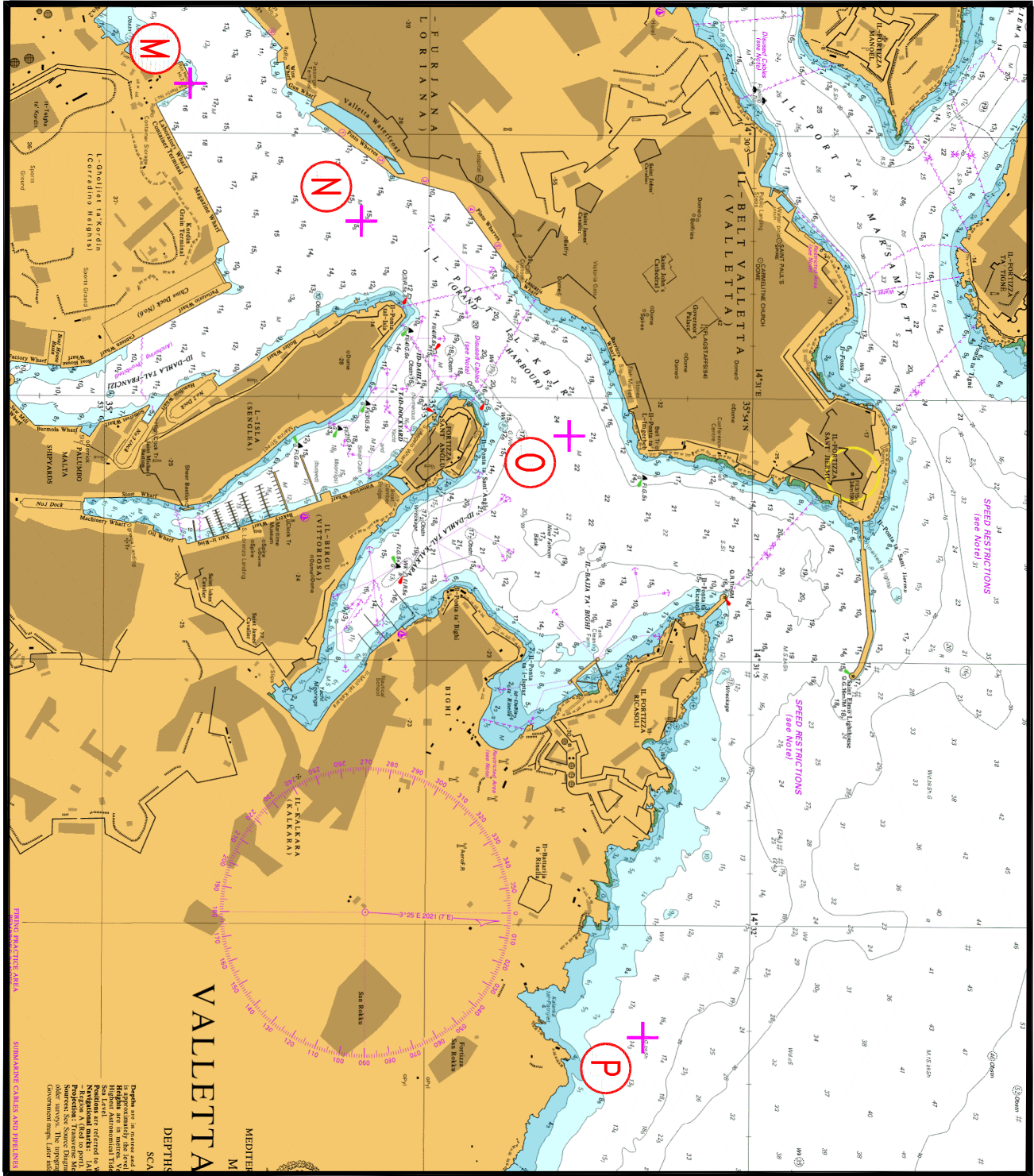


Chart 3



© British Crown Copyright 1970, 1983, 1986, 1988, 1999, 2000  
All rights reserved.

The UK Hydrographic Office makes the accompanying data Available to Malta Maritime Authority (Transport Malta) Under the terms and conditions of agreement HO 1427/020930/01.

**DISCLAIMER**

Whilst the UK Hydrographic Office has endeavoured to ensure That the material supplied is suitable for the purpose described, it accepts no liability (to the maximum extent permitted by law) For any damage or loss of any nature arising from its use. The material supplied is used entirely at the Recipient's own risk.

Chart 4