



PORTS AND YACHTING DIRECTORATE

Transport Malta

## LOCAL NOTICE TO MARINERS No 034 of 2021

Our Ref: **TM/PYD/63/95 Vol VI**

Malta Transport Centre  
Marsa, MRS 1917  
Malta

Tel: (356) 2122 2203  
Fax: (356) 2125 0365  
Email: [info.tm@transport.gov.mt](mailto:info.tm@transport.gov.mt)

[www.transport.gov.mt](http://www.transport.gov.mt)

23 April 2021

### **Diving survey along the coast in Il-Port ta' Marsamxett**

The Ports and Yachting Directorate, Transport Malta, notifies mariners and owners of vessels that a diving survey will be held along the coast in Il-Port ta' Marsamxett.

The diving surveys will take place along the coast as follows:

On Thursday 29<sup>th</sup> April 2021 between 0900 hours and 1200 hours at The Strand from point A to point B.

On Thursday 29<sup>th</sup> April 2021 between 1300 hours and 1600 hours at Il-Ponta ta' L-Imsida, Ta' Xbiex from point C to point D.

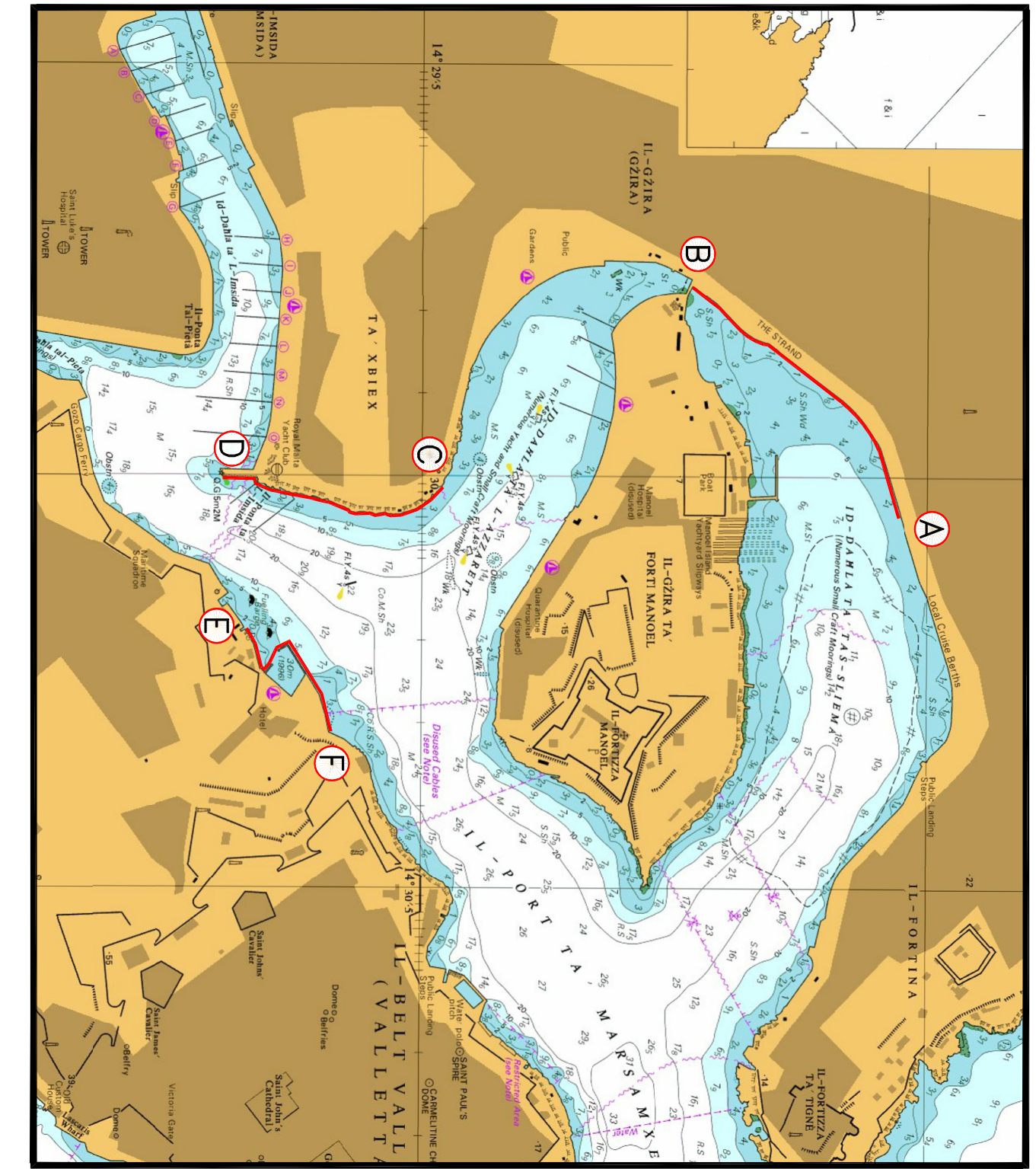
On Friday 30<sup>th</sup> April 2021 between 0900 hours and 1200 hours along the coast between Haywharf and the Excelsior hotel from point E to point F.

The diving survey will be held close to the coast, as shown on the attached chart. During the dive the diving team will be displaying the international code of Signals flag "A".

Masters and operators of vessels are advised to keep a sharp lookout, navigate with caution, and at slow speed (no wake) when navigating close to the above indicated area.

They are to comply with any instructions given by Valletta Port Control (Valletta VTS) on VHF Channel 12 and /or 16.

Chart affected: **BA 177**



© British Crown Copyright 1970, 1983, 1986, 1988, 1999, 2000  
All rights reserved.

The UK Hydrographic Office makes the accompanying data  
Available to Malta Maritime Authority (Transport Malta)  
Under the terms and conditions of agreement HO 1427/020930/01.

**DISCLAIMER**

Whilst the UK Hydrographic Office has endeavoured to ensure  
That the material supplied is suitable for the purpose described,  
it accepts no liability (to the maximum extent permitted by law)  
For any damage or loss of any nature arising from its use.  
The material supplied is used entirely at the Recipient's own risk.