



PORTS AND YACHTING DIRECTORATE

## LOCAL NOTICE TO MARINERS No 023 of 2021

Our Ref: **TM/PYD/63/95**

11 March 2021



**Transport Malta**

Malta Transport Centre,  
Triq Pantar, Hal Lija, LJA 2021  
Malta

Tel: (356) 2122 2203  
Fax: (356) 2125 0365  
Email: [info.tm@transport.gov.mt](mailto:info.tm@transport.gov.mt)

[www.transport.gov.mt](http://www.transport.gov.mt)

### Water sampling in Il-Port ta' Marsaxlokk

The Ports and Yachting Directorate, Transport Malta, notifies mariners and owners of vessels that water sampling will be carried out within Il-Port ta' Marsaxlokk between Wednesday 17<sup>th</sup> March 2021 and Thursday 18<sup>th</sup> March 2021.

Water sampling will be carried out along the imaginary lines in approximate position W to X and Y to Z as shown on attached chart.

Position	Latitude (N)	Longitude (E)
W	35° 49'.908	014° 33'.241
X	35° 49'.174	014° 33'.277
Y	35° 49'.679	014° 32'.767
Z	35° 49'.680	014° 33'.410

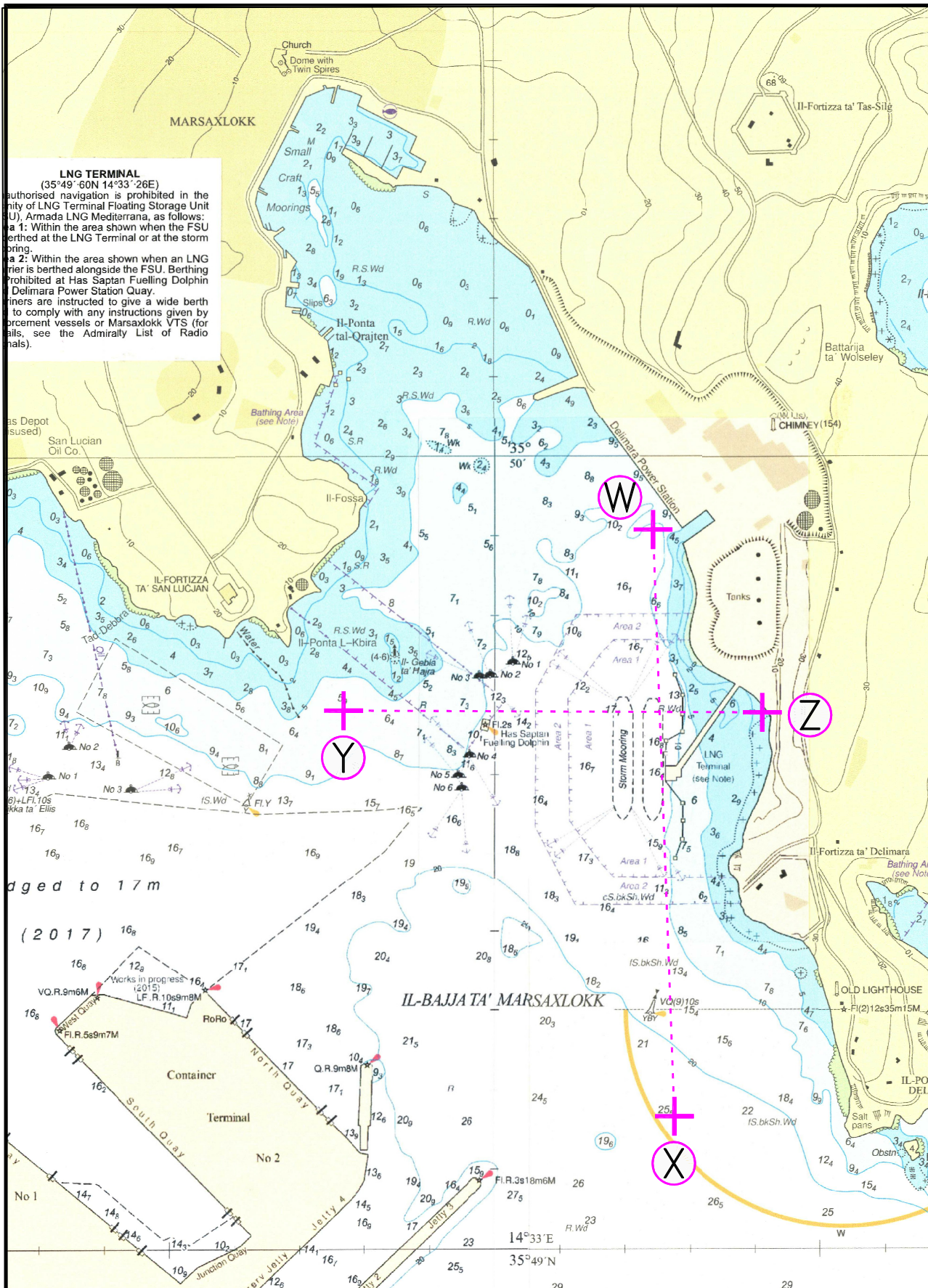
The works will be carried out with the assistance of the vessel Atlantis II.

A safety zone of 50m round the support vessel is to be kept during the sampling.

Masters and operators of vessels are advised to keep a sharp lookout, navigate with caution, and at slow speed when navigating close to the above indicated area.

Any instructions issued by Marsaxlokk Port Control (Marsaxlokk VTS) on VHF channel 14 and/or by any enforcement agency on site, are to be complied with.

Chart affected: **BA 36**



© British Crown Copyright 1970, 1983, 1986, 1988, 1999, 2000  
All rights reserved.

The UK Hydrographic Office makes the accompanying data Available to Malta Maritime Authority (Transport Malta) Under the terms and conditions of agreement HO 1427/020930/01.

**DISCLAIMER**

Whilst the UK Hydrographic Office has endeavoured to ensure That the material supplied is suitable for the purpose described, It accepts no liability (to the maximum extent permitted by law) For any damage or loss of any nature arising from its use. The material supplied is used entirely at the Recipient's own risk.