



PORTS AND YACHTING DIRECTORATE

LOCAL NOTICE TO MARINERS N° 011 OF 2025

Our Ref: **TM/PYD 0001/25**

30 January 2025



Transport Malta

Malta Transport Centre,
Triq Pantar, Hal Lija, LJA 2021
Malta

Tel: (356) 2122 2203
Fax: (356) 2125 0365
Email: info.tm@transport.gov.mt

www.transport.gov.mt

Construction works at DWQ

The Ports and Yachting Directorate, Transport Malta, hereby notifies mariners and the general public that construction work in connection with VGT, will commence with immediate effect and are scheduled to be completed by Monday 30th June 2025.

The working area which involves construction will be carried out within the area A, B, C, D and the intermediate coastline, as shown in red on the attached chart.

Point	LATITUDE (N)	LONGITUDE (E)
A	35° 53'.257	014° 30'.293
B	35° 53'.219	014° 30'.316
C	35° 53'.164	014° 30'.264
D	35° 53'.188	014° 30'.233

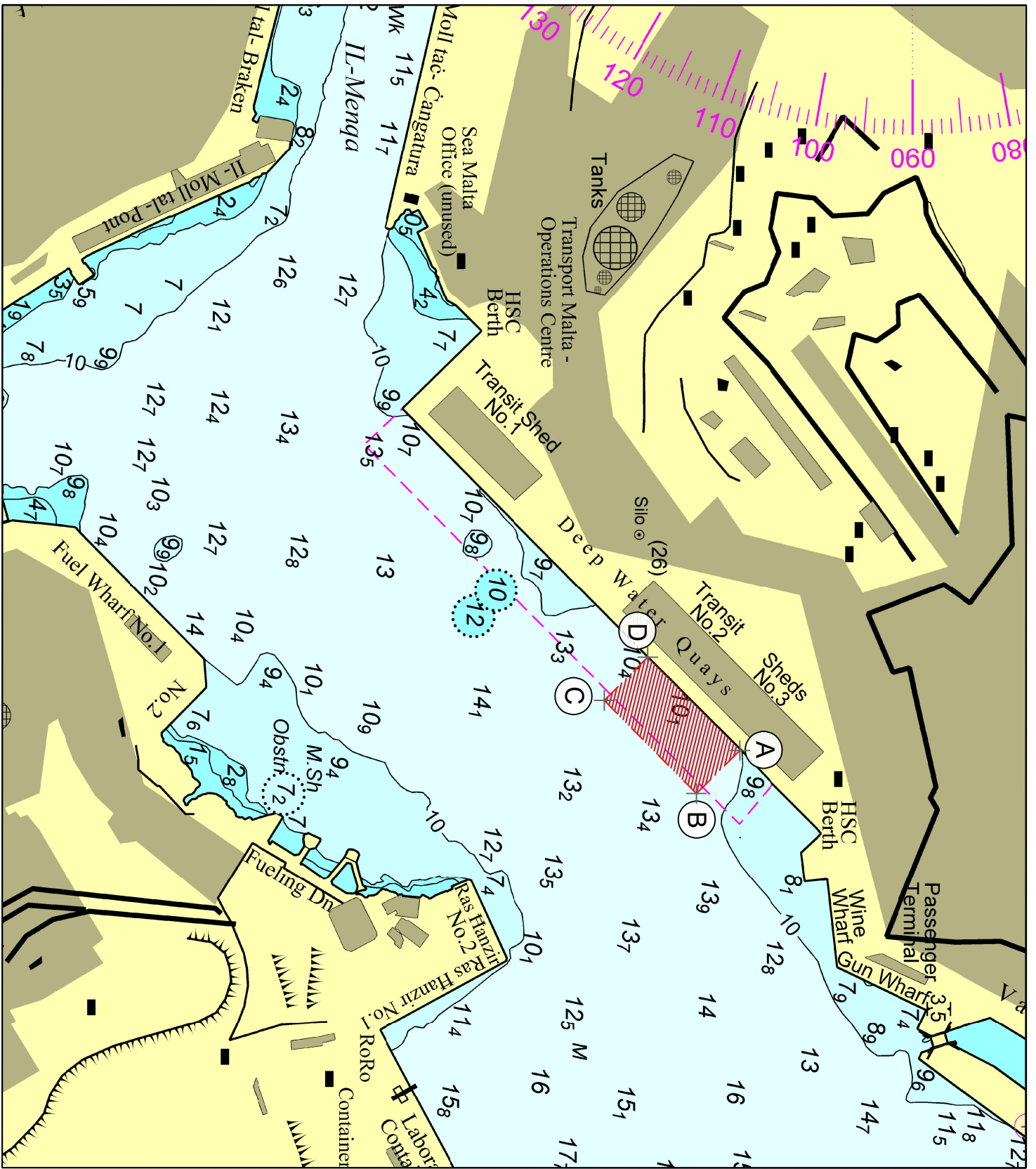
The vessels engaged in the construction work will be exhibiting the appropriate lights and shapes in accordance with the requirements of the International Regulations for the Prevention of Collisions at Sea (COLREGS) 1972. The vessels engaged in the works are to be given a wide berth.

Some of the works will be carried out by scuba divers who will be displaying the International Code of Signals flag "A", while diving is being carried out.

Mariners and vessel operators are to navigate with caution and at slow speed (no wake) when in the vicinity. They are to co-operate with the contractor on site.

Mariners are to comply with instructions issued on VHF channel 12 by Valletta VTS and any Enforcement Officers on site.

Chart affected: **BA 177**



© British Crown Copyright 1970, 1983, 1986, 1988, 1989, 2000
 All rights reserved.
 The UK hydrographic Office makes the accompanying data available to Malta Maritime Authority (Transport Malta) under the terms and conditions of agreement HO 1427/020930/01.
 DISCLAIMER
 Whilst the UK hydrographic Office has endeavoured to ensure that the material supplied is suitable for the purpose described, it accepts no liability for the maximum extent permitted by law for any damage or loss of any nature arising from its use. The material supplied is used entirely at the recipient's own risk.