



PORTS AND YACHTING DIRECTORATE

## NOTICE TO MARINERS N° 24 of 2024

Our Ref: **TM/PYD/40/82 Vol IV**

1 November 2024



Transport Malta

Malta Transport Centre,  
Triq Pantar, Hal Lija, LJA 2021  
Malta

Tel: (356) 2122 2203  
Fax: (356) 2125 0365  
Email: [info.tm@transport.gov.mt](mailto:info.tm@transport.gov.mt)

[www.transport.gov.mt](http://www.transport.gov.mt)

### Live firing practice exercise at Sea – Gunex 03/2024

The Ports and Yachting Directorate, Transport Malta notifies that the Armed Forces of Malta shall conduct a live firing practice exercise at sea from Pembroke Ranges (LM-D01) and south of Malta (LM-D05) between Monday 11<sup>th</sup> November 2024 and Friday 15<sup>th</sup> November 2024.

The exercise will take place on the above-mentioned dates as follow:

LM-D01, between 0800 hours and 1600 hours local time, (0700 hours to 1500 hours UTC).  
LM-D05, between 1400 hours and 1800 hours local time, (1300 hours to 1700 hours UTC).

Thursday 14<sup>th</sup> November and Friday 15<sup>th</sup> November 2024 are designated as reserve dates.

#### **At Pembroke ranges LM-D01 (PEMBROKE HIGH)**

From Position A:	LATITUDE (N)	LONGITUDE (E)
	35° 55'.900	014° 28'.533

thence on a bearing of 335° True x 8.5 nautical miles to:

Position B:	LATITUDE (N)	LONGITUDE (E)
	36° 03'.620	014° 24'.100

thence on an arc of a circle radius 8.5 nautical miles centred on position A to:

Position C:	LATITUDE (N)	LONGITUDE (E)
	36° 00'.150	014° 37'.600

thence on a bearing of 240° True to position A.



**Transport Malta**

All vessels in the vicinity must proceed with caution and keep at least eight and a half nautical miles (8.5NM) off the Pembroke Coast, they are also to keep 6° to the left and to the right of the above-mentioned sector, on the dates and times indicated.

Mariners are also informed that a corridor of four nautical miles (4NM) between the coast and the line M to N (as shown on the attached chart A) has been established for the passage of all vessels on the above-mentioned dates and times. Any vessel intending to transit through this corridor within these times is to communicate on VHF channel 69 Malta VTS, for final approval prior to entering the area.

	LATITUDE (N)	LONGITUDE (E)
M	36° 02'.869	014° 24'.532
N	35° 58'.387	014° 33'.834

**At south of Malta LM-D05 (MELITA)**

The exercise will be held within a circular area of 8 Nautical Mile Radius, centred on point Z:

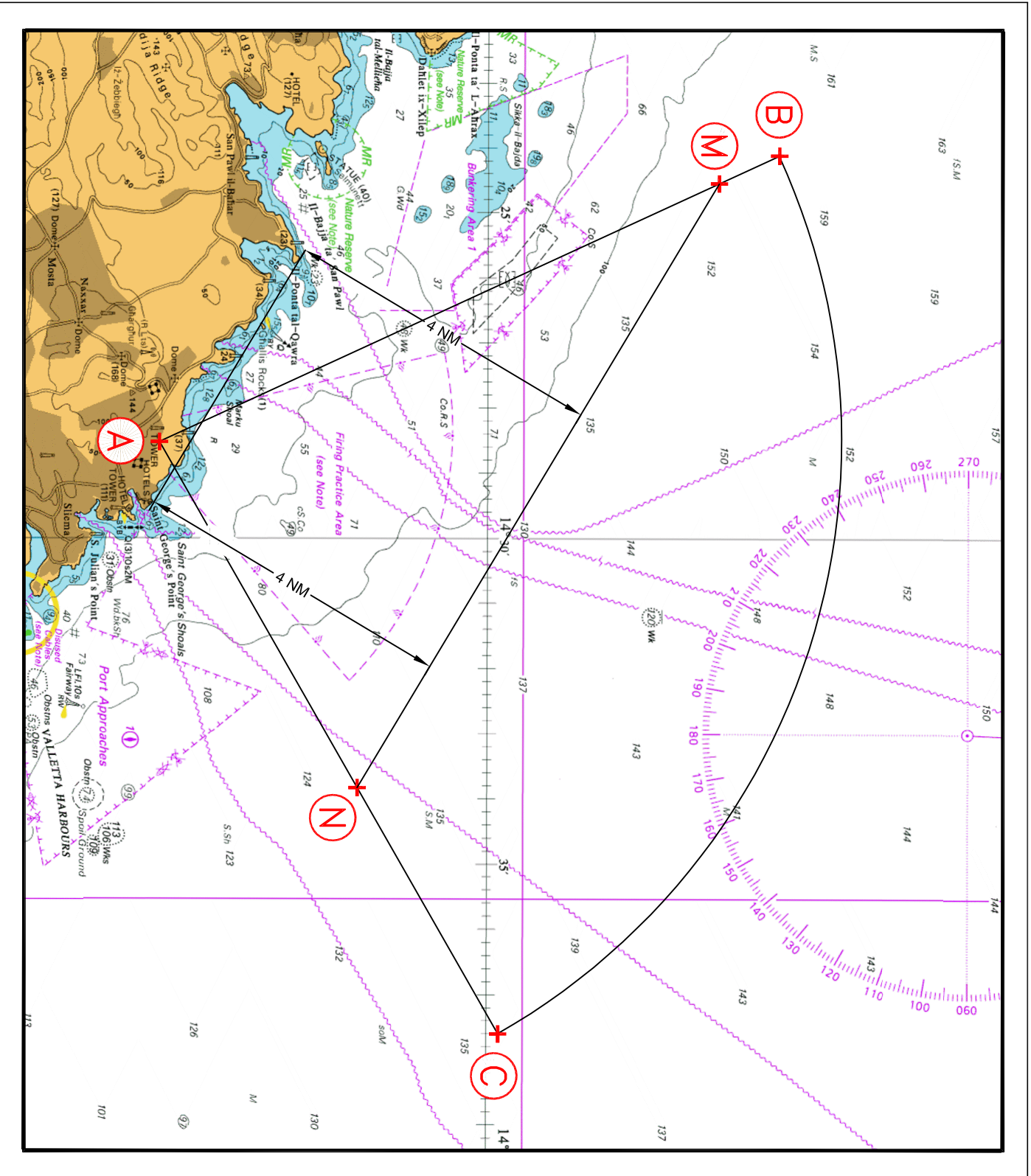
Position Z:	LATITUDE (N)	LONGITUDE (E)
	35° 30'.500	014° 11'.000

as shown on the attached chart B.

In view of the above all vessels in the vicinity must proceed with caution, they are advised to give the exercise areas a wide berth and comply at all times with any instructions given by AFM craft patrolling the area and by Valletta VTS on VHF channel 12.

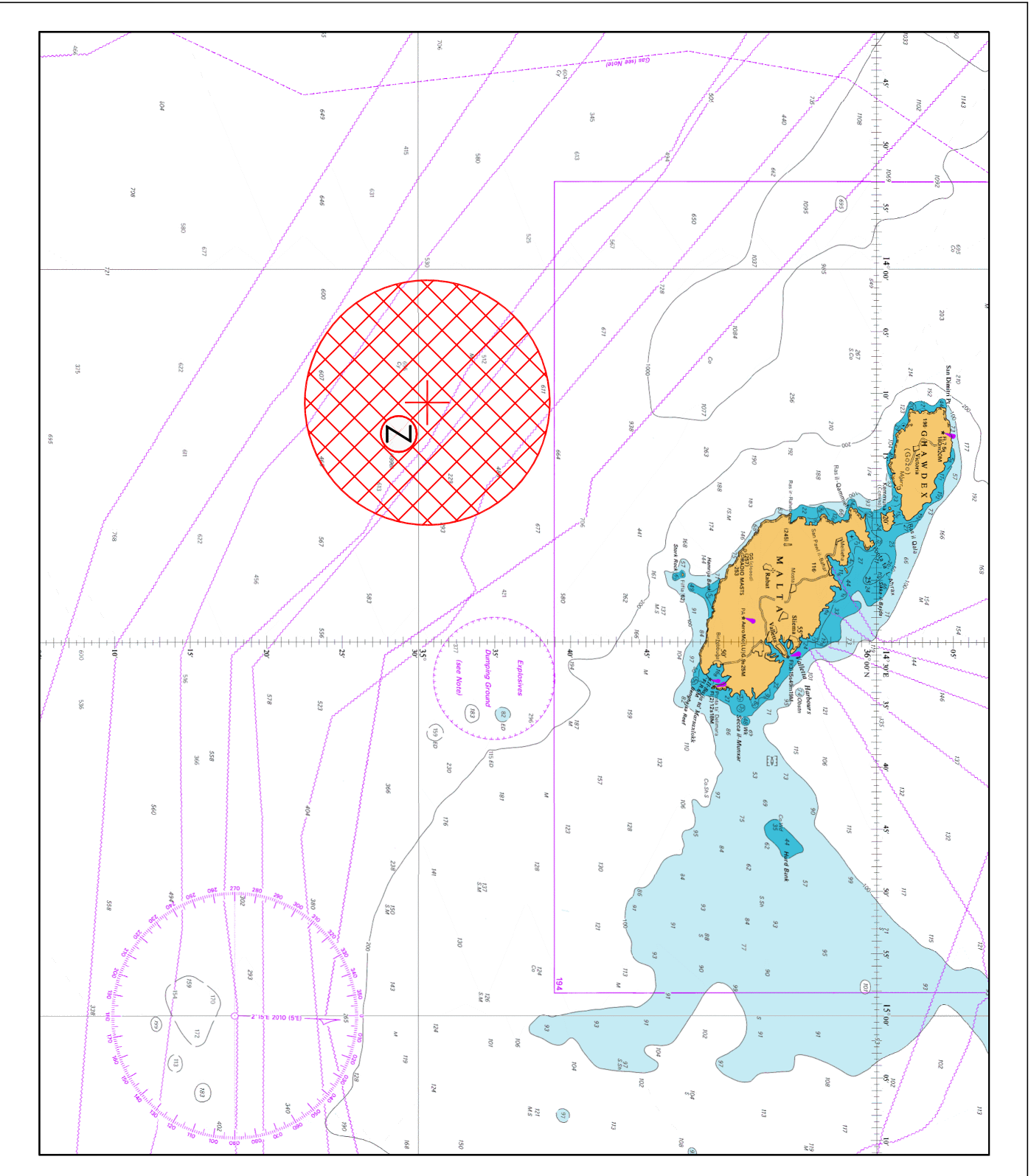
Chart affected: **BA 194, 2124, 2537 and 2538**

Positions referred to **WGS 84 DATUM**



© British Crown Copyright 1970, 1983, 1986, 1988, 1999, 2000  
 All rights reserved.  
 The UK Hydrographic Office makes the accompanying data  
 Available to Malta Maritime Authority (Transport Malta)  
 Under the terms and conditions of agreement HO 1427/020930/01.  
**DISCLAIMER**  
 Whilst the UK Hydrographic Office has endeavoured to ensure  
 That the material supplied is suitable for the purpose described,  
 It accepts no liability (to the maximum extent permitted by law)  
 For any damage or loss of any nature arising from its use.  
 The material supplied is used entirely at the Recipient's own risk.

Chart A



© British Crown Copyright 1970, 1983, 1986, 1988, 1999, 2000  
 All rights reserved.

The UK Hydrographic Office makes the accompanying data  
 Available to Malta Maritime Authority (Transport Malta)  
 Under the terms and conditions of agreement HO 1427/020930/01.

**DISCLAIMER**

Whilst the UK Hydrographic Office has endeavoured to ensure  
 That the material supplied is suitable for the purpose described,  
 It accepts no liability (to the maximum extent permitted by law)  
 For any damage or loss of any nature arising from its use.  
 The material supplied is used entirely at the Recipient's own risk.

Chart B