



PORTS AND YACHTING DIRECTORATE

Transport Malta

## NOTICE TO MARINERS N° 19 of 2024

Our Ref: **TM/PYD/63/95**

Malta Transport Centre  
Marsa, MRS 1917  
Malta

Tel: (356) 2122 2203  
Fax: (356) 2125 0365  
Email: [info.tm@transport.gov.mt](mailto:info.tm@transport.gov.mt)

12 August 2024

[www.transport.gov.mt](http://www.transport.gov.mt)

### Geophysical survey on the Maltese Continental Shelf but outside Maltese Territorial Waters

The Ports and Yachting Directorate, Transport Malta, notifies mariners that a Geophysical survey will be carried out on the Maltese Continental Shelf but outside Maltese Territorial Waters.

The survey will be carried out by the vessel '*Fugro Mercator*' within the areas formed by joining the following points:

#### Area 1

Position	Latitude (N)	Longitude (E)
1A	35° 35'.028	014° 45'.001
1B	35° 38'.993	014° 41'.756
1C	35° 40'.750	014° 45'.616
1D	35° 43'.077	014° 46'.717
1E	35° 42'.236	014° 48'.825
1F	35° 44'.296	014° 49'.964
1G	35° 44'.367	014° 50'.621
1H	35° 43'.207	014° 52'.285
1I	35° 40'.984	014° 51'.160

#### Area 2

Position	Latitude (N)	Longitude (E)
2A	36° 00'.041	014° 51'.356
2B	36° 00'.407	014° 48'.912
2C	36° 00'.857	014° 47'.363
2D	36° 07'.580	014° 47'.386
2E	36° 03'.950	014° 55'.922
2F	36° 01'.955	014° 53'.801



The survey will start on Sunday 18<sup>th</sup> August 2024 and is scheduled to be completed by Wednesday 18<sup>th</sup> September 2024.

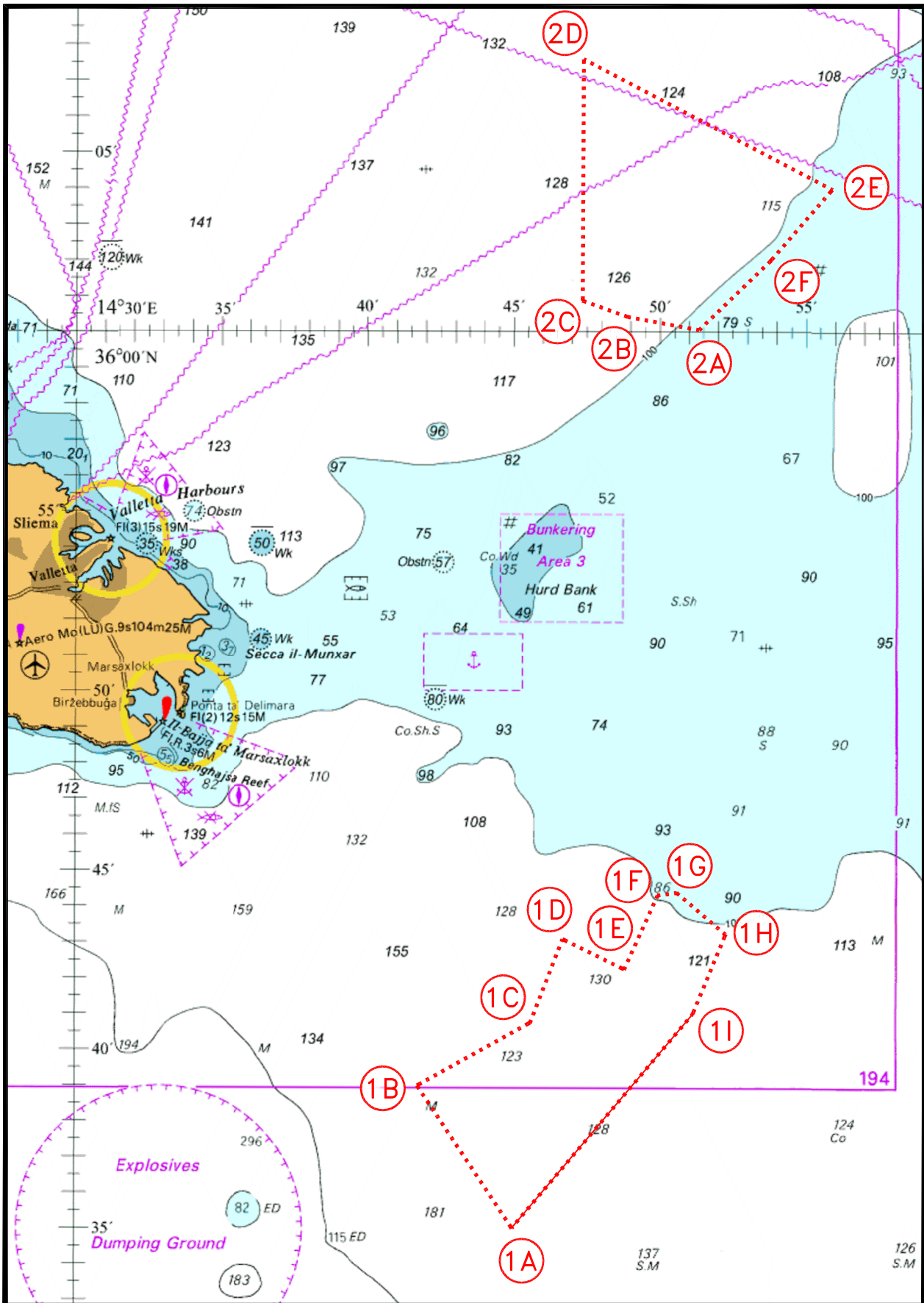
The survey will be carried out using a multibeam echo sounder and a sub-bottom profiler which will make the *'Fugro Mercator'* restricted in her ability to manoeuvre.

Mariners and operators of sea craft are advised to keep a sharp lookout and proceed with caution while navigating in the above area. They are to give the *'Fugro Mercator'* a wide berth of at least 500m.

Moreover, they are requested to comply with instructions given by Malta VTS on VHF channel 69.

Chart affected: **BA 2124, 2123,194**

Positions referred to WGS 84 DATUM.



© British Crown Copyright 1970, 1983, 1986, 1988, 1999, 2000  
 All rights reserved.

The UK Hydrographic Office makes the accompanying data  
 Available to Malta Maritime Authority (Transport Malta)  
 Under the terms and conditions of agreement HO 1427/020930/01.

DISCLAIMER

Whilst the UK Hydrographic Office has endeavoured to ensure  
 That the material supplied is suitable for the purpose described,  
 It accepts no liability (to the maximum extent permitted by law)  
 For any damage or loss of any nature arising from its use.  
 The material supplied is used entirely at the Recipient's own risk.