



PORTS AND YACHTING DIRECTORATE

NOTICE TO MARINERS No 10 of 2022

Our Ref: **TM/PYD/70/02**

08 February 2022



Transport Malta

Malta Transport Centre,
Triq Pantar, Hal Lija, LJA 2021
Malta

Tel: (356) 2122 2203
Fax: (356) 2125 0365
Email: info.tm@transport.gov.mt

www.transport.gov.mt

ROV Survey of the Malta-Sicily interconnector submarine cable - Nexans 2022

The Ports and Yachting Directorate, Transport Malta notifies mariners that a survey will be carried out with the use of a Remotely Operated Vehicle (ROV) equipped with video recorder and multibeam echo sounder. This survey will be carried out by the vessel "*Havila Phoenix*" and her ancillary equipment.

Weather permitting the survey is planned to commence on Sunday 13th February 2022 and be completed by Monday 21st February 2022 along the route between the following coordinates:

Turning Point	Latitude (N)	Longitude (E)
1 (Malta – Qalet Marku)	35° 56'.560	014° 26'.960
2	35° 56'.710	014° 27'.020
3	35° 56'.810	014° 27'.000
4	35° 57'.390	014° 27'.220
5	35° 57'.700	014° 27'.260
6	35° 59'.450	014° 29'.360
7	36° 02'.550	014° 30'.630
8	36° 12'.640	014° 33'.280
9	36° 22'.910	014° 33'.900
10	36° 27'.505	014° 32'.270
11	36° 30'.980	014° 30'.820
12	36° 35'.040	014° 30'.800
13	36° 37'.775	014° 32'.542
14	36° 39'.640	014° 34'.400
15 (Sicily – Marina di Ragusa)	36° 46'.650	014° 34'.240



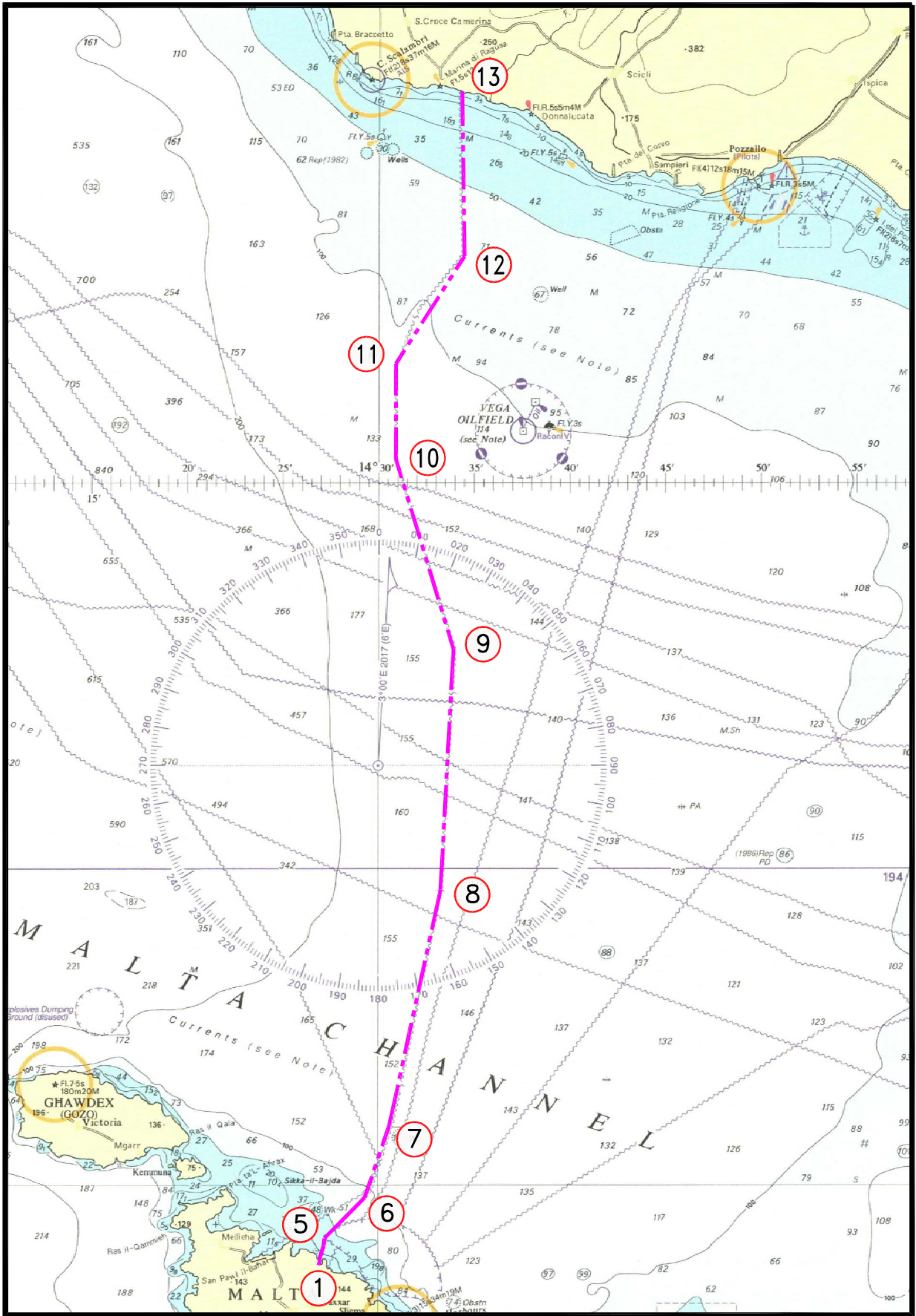
Transport Malta

Since the vessel will be towing an ROV, she will be restricted in her ability to manoeuvre.

Mariners are instructed to navigate with caution when the above-mentioned vessel "*Havila Phoenix*" is sighted and maintain a safe distance of 0.75 Nautical Miles from the vessels.

They are to obey any instructions given on VHF channel 69 and /or 16 by Malta Coastal Station (Malta VTS) and on VHF channel 12 by Valletta VTS when crossing the channel between Sicily and Malta.

Charts Affected: **BA 194, 2123, 2124, 2537, 2538 and Int. 301**



© British Crown Copyright 1970, 1983, 1986, 1988, 1999, 2000
 All rights reserved.

The UK Hydrographic Office makes the accompanying data
 Available to Malta Maritime Authority (Transport Malta)
 Under the terms and conditions of agreement HO 1427/020930/01.

DISCLAIMER

Whilst the UK Hydrographic Office has endeavoured to ensure
 That the material supplied is suitable for the purpose described,
 It accepts no liability (to the maximum extent permitted by law)
 For any damage or loss of any nature arising from its use.
 The material supplied is used entirely at the Recipient's own risk.