



PORTS AND YACHTING DIRECTORATE

## LOCAL NOTICE TO MARINERS N° 126 of 2024

Our Ref: **TM/PYD/83/97**

18 September 2024



Transport Malta

Malta Transport Centre  
Marsa, MRS 1917  
Malta

Tel: (356) 2122 2203  
Fax: (356) 2125 0365  
Email: [info.tm@transport.gov.mt](mailto:info.tm@transport.gov.mt)

[www.transport.gov.mt](http://www.transport.gov.mt)

### Roberts Cup – Como to Malta Seaplane Rally - 2024

The Ports and Yachting Directorate, Transport Malta, notifies that the Malta Seaplanes Association in collaboration with Aero Club Como will be organising the Roberts Cup – Como to Malta Seaplanes Rally between Saturday 5<sup>th</sup> October 2024 and Sunday 6<sup>th</sup> October 2024. Part of the rally will be held in the Grand Harbour, Qalet Marku and Il-Fliegu ta' Kemmuna.

The flying displays over the Grand Harbour will be held as follows:

Within the display area A, B, C and D, as shown on the attached chart A.

POSITION	LATITUDE (N)	LONGITUDE (E)
A	35° 53'.578	014° 30'.785
B	35° 53'.509	014° 30'.847
C	35° 53'.213	014° 30'.550
D	35° 53'.284	014° 30'.490

Saturday 5 <sup>th</sup> October 2024	between 1000 hours and 1300 hours and
Sunday 6 <sup>th</sup> October 2024	between 1000 hours and 1300 hours.

The flying displays over Qalet Marku and Il-Fliegu ta' Kemmuna will be held as follows:

Within the display area E, F, G and H at Qalet Marku and I, J, K and L at Il-Fliegu ta' Kemmuna, as shown on the attached charts B and C.

POSITION	LATITUDE (N)	LONGITUDE (E)
E	35° 57'.315	014° 26'.950
F	35° 56'.850	014° 27'.483
G	35° 57'.017	014° 27'.550
H	35° 57'.483	014° 27'.183
I	35° 59'.783	014° 21'.400
J	35° 59'.467	014° 20'.450
K	35° 59'.717	014° 20'.283
L	36° 00'.000	014° 21'.200



Saturday 5<sup>th</sup> October 2024  
Sunday 6<sup>th</sup> October 2024

between 1500 hours and 1700 hours and  
between 1500 hours and 1700 hours.

In the event of adverse weather conditions on both days, the events may be postponed until:

Monday 7<sup>th</sup> October 2024

at the same locations and times.

All timings are in Local Time.

The displays will consist mainly of landing and take-off maneuvers which will be held within the above-mentioned areas. Mariners are hereby informed that during the dates and times mentioned traffic movements will be restricted.

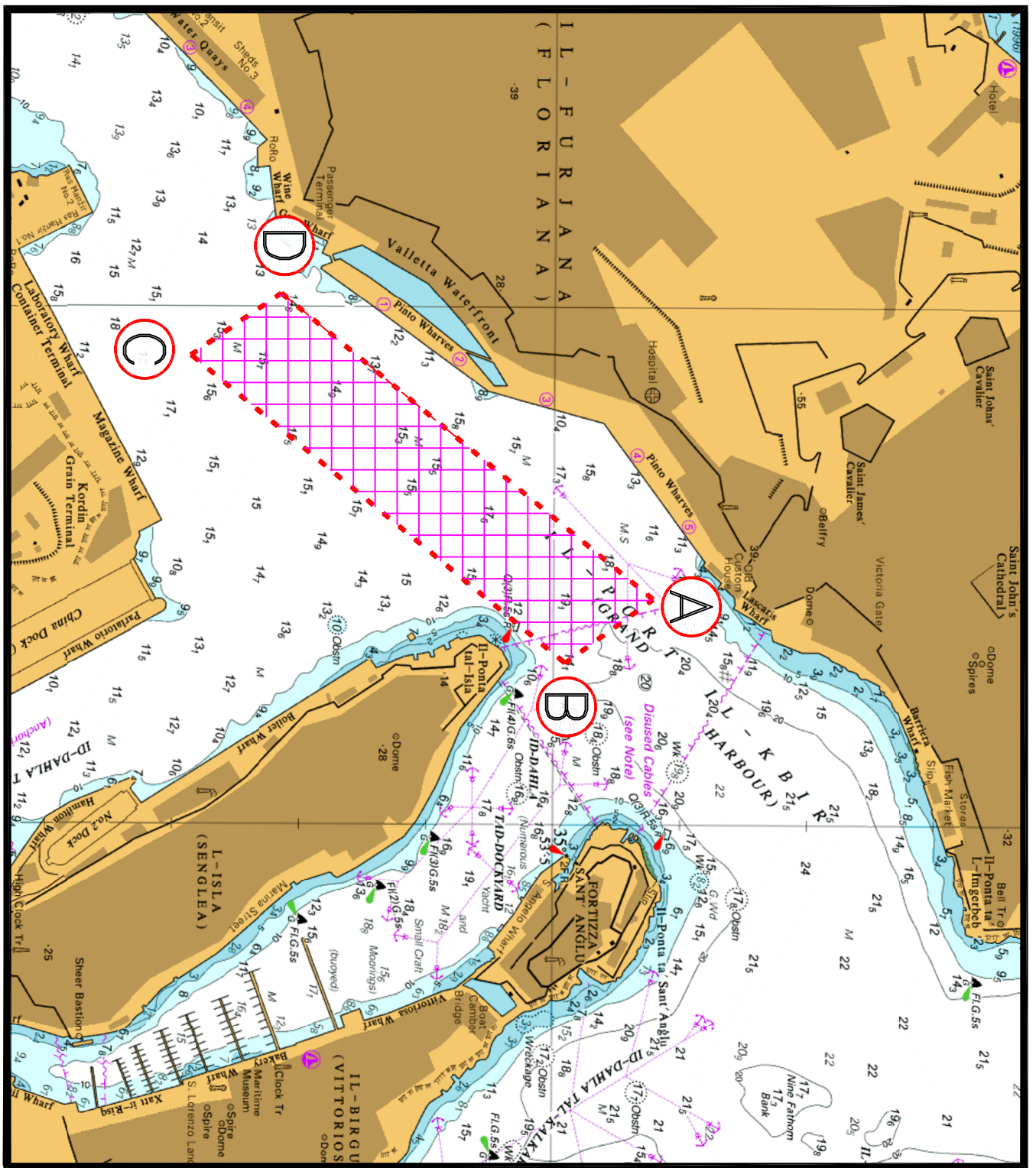
Valletta VTS will be managing the movement of vessels, on VHF channel 12 within the Grand Harbour.

Mariners are advised to keep a sharp lookout and navigate with caution when in the vicinity, on the stipulated dates and times.

They are to cooperate with the organisers and to comply with any instructions issued on VHF channel 12 and/or 16 by Valletta VTS and by any Enforcement Personnel on site.

Positions are in WGS 84 Datum.

Chart affected: BA Charts 211, 177, 2537, 2538.



© British Crown Copyright 1970, 1983, 1986, 1988, 1999, 2000  
All rights reserved.

The UK Hydrographic Office makes the accompanying data  
Available to Malta Maritime Authority (Transport Malta)  
Under the terms and conditions of agreement HO 1427/020930/01.

**DISCLAIMER**

Whilst the UK Hydrographic Office has endeavoured to ensure  
That the material supplied is suitable for the purpose described,  
It accepts no liability (to the maximum extent permitted by law)  
For any damage or loss of any nature arising from its use.  
The material supplied is used entirely at the Recipient's own risk.

**Chart A**

© British Crown Copyright 1970, 1983, 1986, 1988, 1999, 2000  
All rights reserved.

The UK Hydrographic Office makes the accompanying data  
Available to Malta Maritime Authority (Transport Malta)  
Under the terms and conditions of agreement HO 1427/020930/01.

**DISCLAIMER**

Whilst the UK Hydrographic Office has endeavoured to ensure  
That the material supplied is suitable for the purpose described,  
It accepts no liability (to the maximum extent permitted by law)  
For any damage or loss of any nature arising from its use.  
The material supplied is used entirely at the Recipient's own risk.

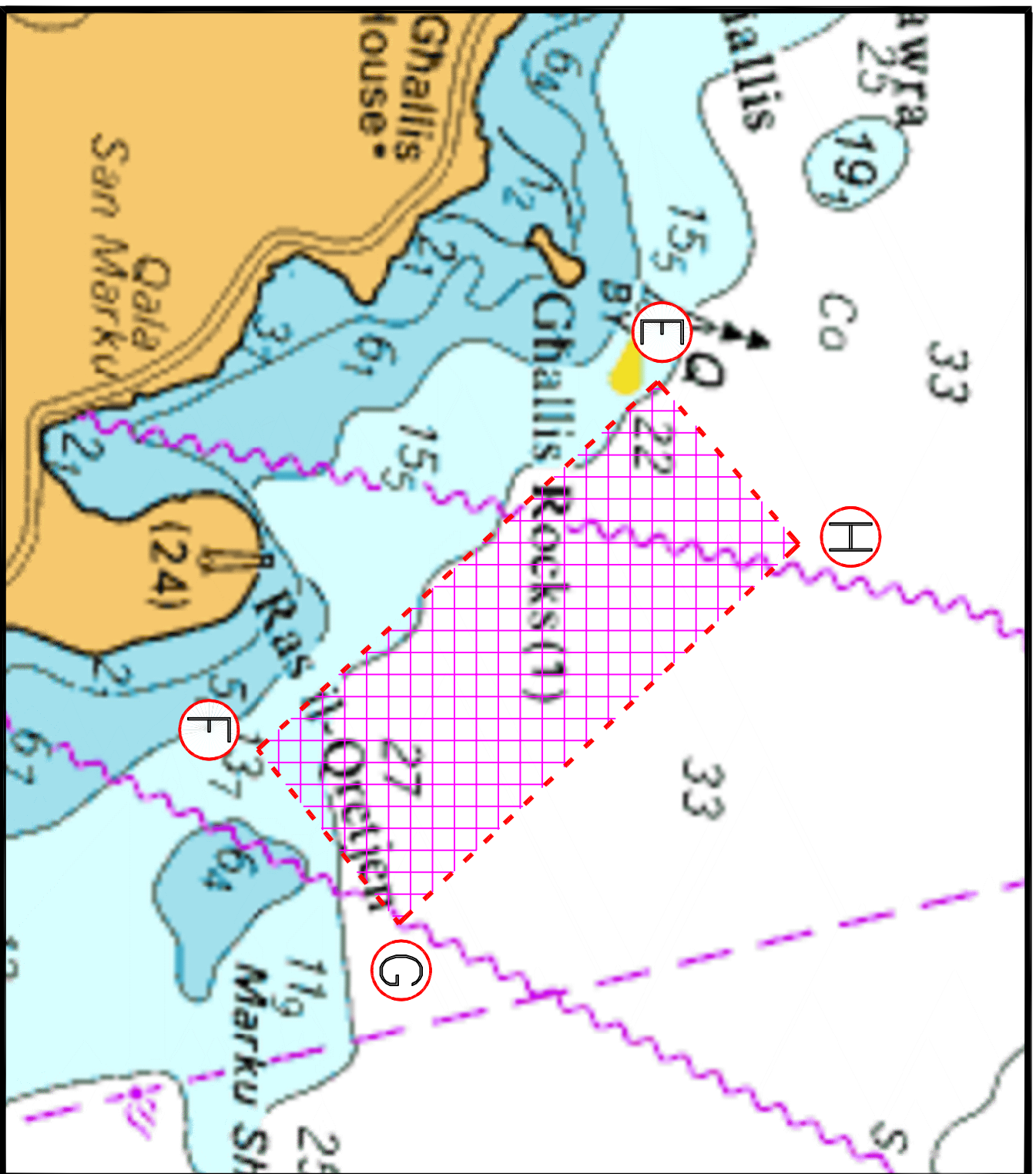


Chart B



