



PORTS AND YACHTING DIRECTORATE

## LOCAL NOTICE TO MARINERS N° 117 of 2024

Our Ref: **TM/PYD/132/89**

11 September 2024

### Filming in several localities around Malta - WAO

The Ports and Yachting Directorate, Transport Malta notifies all mariners, owners of vessels and divers, that filming activities will take place in several localities around Malta.

The filming will be held between Tuesday 17<sup>th</sup> September and Saturday 12<sup>th</sup> October 2024, as follows.

17 <sup>th</sup> September	Magazine Wharf	Chart A
20 <sup>th</sup> September	Delimara Power Station	Chart B
24 <sup>th</sup> September	North-West of Malta	Chart C
25 <sup>th</sup> – 27 <sup>th</sup> September	Ċirkewwa South Quay	Chart D
30 <sup>th</sup> Sep – 4 <sup>th</sup> Oct	Gnejna Bay	Chart E
7 <sup>th</sup> Oct – 8 <sup>th</sup> Oct	Ċirkewwa South Quay	Chart D

If unexpectedly, filming cannot take place in the above mentioned locations due to weather restrictions, filming will be carried out in, *Għadira Bay* (Chart F) and at *Il- Ponta ta' Bengħajsa* (Chart G).

All mariners, owners of vessels and divers are to be notified that there will be limited access on the above-mentioned dates in the following areas as shown in the attached charts.

Mariners and the general public are advised that during the above-mentioned dates, a safe distance must be kept and to avoid anchoring in the areas. Co-operation with the filming crew on site is a must.

Mariners are to navigate with caution at slow speed and give a wide berth when in the vicinity, they are to keep out of the above-mentioned area.

Mariners and vessel operators are to comply with instructions and directions issued on VHF channel 12 and/or 16 by Valletta VTS and by any Enforcement Personnel on site.

Charts affected: **BA 36, 211, 194, 2537**

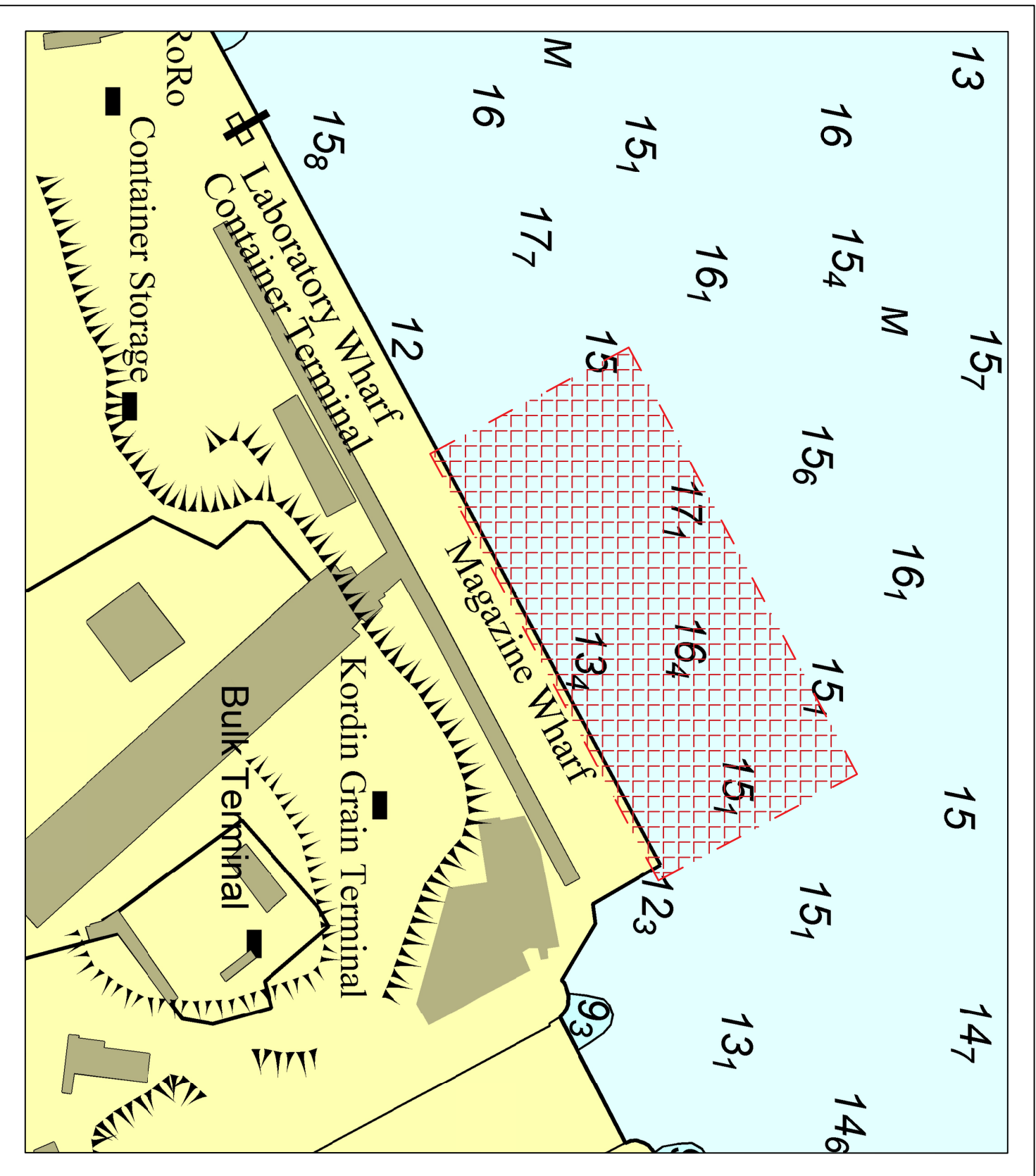


Transport Malta

Malta Transport Centre,  
Triq Pantar, Hal Lija, LJA 2021  
Malta

Tel: (356) 2122 2203  
Fax: (356) 2125 0365  
Email: [info.tm@transport.gov.mt](mailto:info.tm@transport.gov.mt)

[www.transport.gov.mt](http://www.transport.gov.mt)



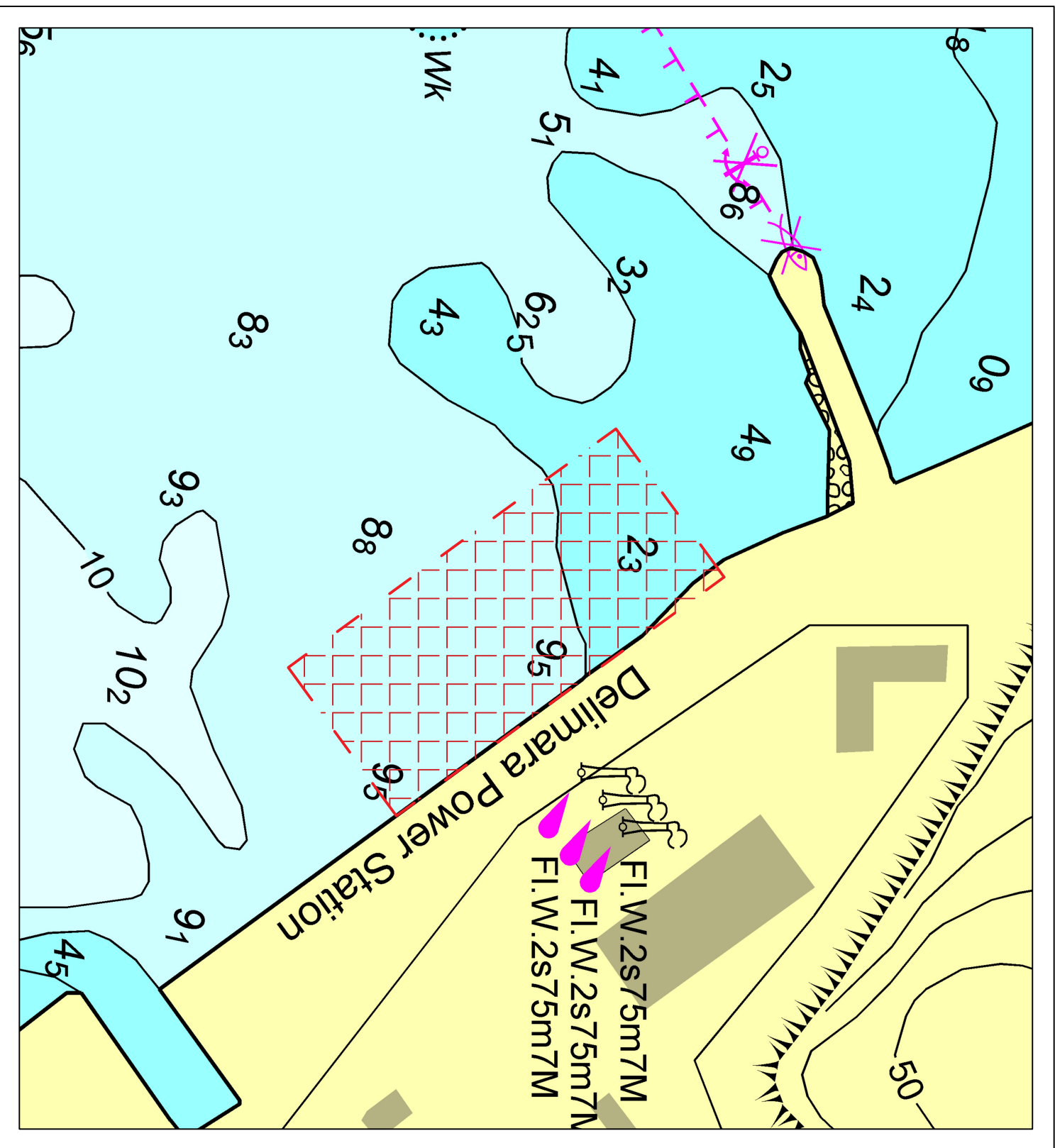
© British Crown Copyright 1970, 1983, 1986, 1988, 1999, 2000  
All rights reserved.

The UK Hydrographic Office makes the accompanying data  
Available to Malta Maritime Authority (Transport Malta)  
Under the terms and conditions of agreement HO 1427/009930/01.

**DISCLAIMER**

Whilst the UK Hydrographic Office has endeavoured to ensure  
That the material supplied is suitable for the purpose described,  
It accepts no liability (to the maximum extent permitted by law)  
For any damage or loss of any nature arising from its use.  
The material supplied is used entirely at the Recipient's own risk.

# Chart A



© British Crown Copyright 1970, 1983, 1986, 1988, 1989, 2000  
All rights reserved.

The UK Hydrographic Office makes the accompanying data  
Available to Malta Maritime Authority (Transport Malta)  
Under the terms and conditions of agreement HO 1427/020930/01.

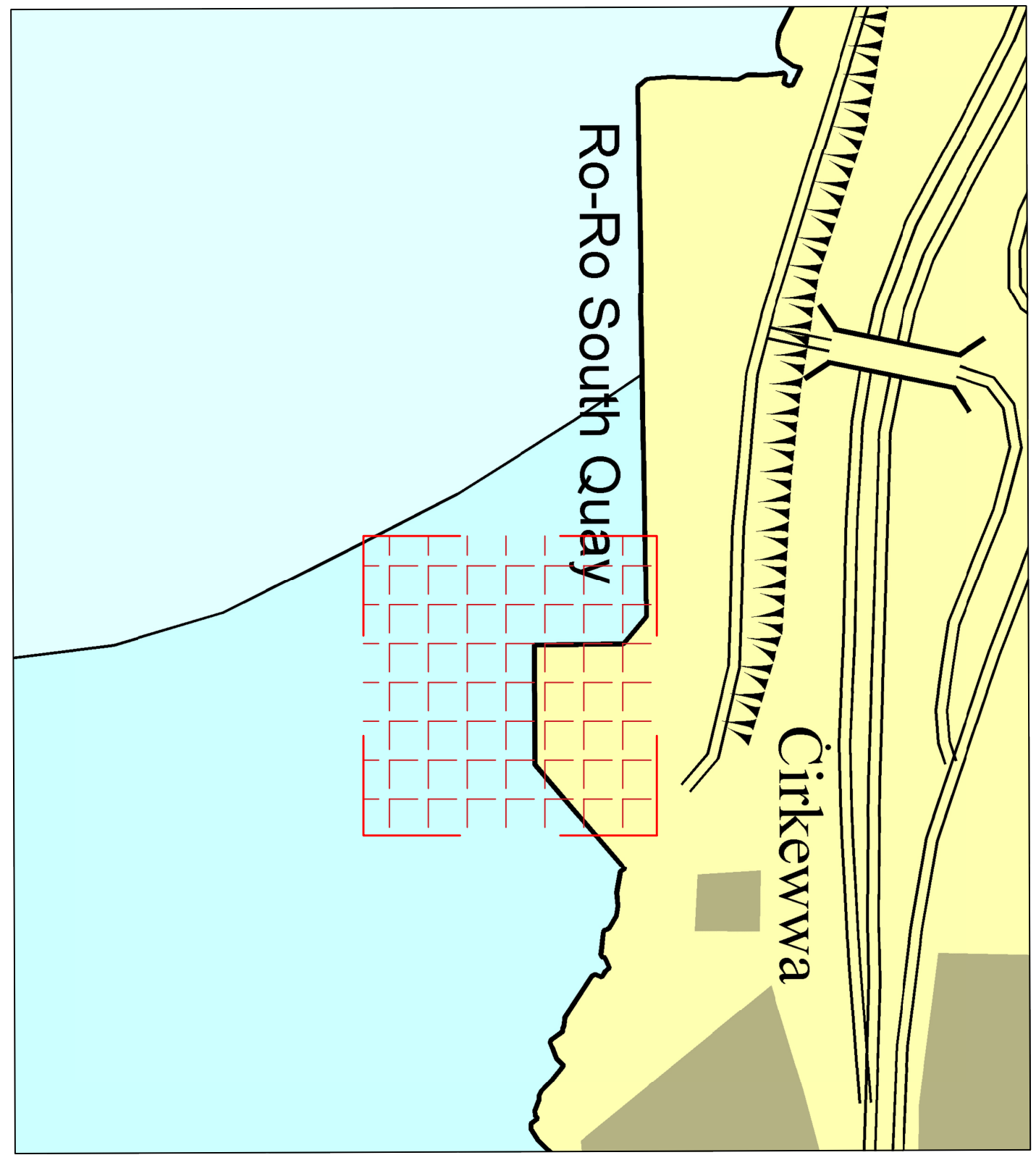
**DISCLAIMER**

Whilst the UK Hydrographic Office has endeavoured to ensure  
That the material supplied is suitable for the purpose described,  
It accepts no liability (to the maximum extent permitted by law)  
For any damage or loss of any nature arising from its use.  
The material supplied is used entirely at the Recipient's own risk.

Chart B







© British Crown Copyright 1970, 1983, 1986, 1988, 1999, 2000  
All rights reserved.

The UK Hydrographic Office makes the accompanying data  
Available to Malta Maritime Authority (Transport Malta)  
Under the terms and conditions of agreement HO 1427/020930/01.

**DISCLAIMER**

Whilst the UK Hydrographic Office has endeavoured to ensure  
That the material supplied is suitable for the purpose described,  
It accepts no liability (to the maximum extent permitted by law)  
For any damage or loss of any nature arising from its use.  
The material supplied is used entirely at the Recipient's own risk.

Chart D





