



PORTS AND YACHTING DIRECTORATE

LOCAL NOTICE TO MARINERS N° 113 of 2024

Our Ref: **TM/PYD/ 87/01**

03 September 2024



Transport Malta

Malta Transport Centre,
Triq Pantar, Hal Lija, LJA 2021
Malta

Tel: (356) 2122 2203
Fax: (356) 2125 0365
Email: info.tm@transport.gov.mt

www.transport.gov.mt

Conservation Areas around Wrecks – Updated August 2024

The Ports and Yachting Directorate, Transport Malta, notifies mariners and owners of vessels that the Department of Fisheries and Aquaculture has set several Conservation Areas around wrecks that are lying on the sea bottom, within Maltese territorial waters, including a number of conditions together with Transport Malta

In view of the above, mariners are to note that these conservation areas have been established as indicated below:

LOCATION	WRECK	POINT	LATITUDE (N)	LONGITUDE (E)
Wied iz-Zurrieq	Um el Faroud	formed by joining the points A, B, C, D and E, as seen on the attached chart A.		
		A	35° 49'.200	014° 26'.917
		B	35° 49'.177	014° 27'.050
		C	35° 49'.128	014° 27'.174
		D	35° 49'.067	014° 27'.067
		E	35° 49'.083	014° 26'.833
Off Xatt l-Ahmar	MV Xlendi Karwela Cominoland Hephaestus	formed by joining the points A, B, C, D, E, F, and the intermediate coastline, as seen on the attached chart B.		
		A	36° 01'.067	014° 17'.194
		B	36° 01'.083	014° 17'.363
		C	36° 01'.042	014° 17'.438
		D	36° 00'.867	014° 17'.439
		E	36° 00'.876	014° 16'.983
		F	36° 01'.054	014° 16'.968



Transport Malta

Marsacala **Tug St. Michael
P33
Tug 10** formed by joining the points A, B, C, D and E,
and the intermediate coastline, as seen on the
attached chart C.

A	35° 52'.079	014° 34'.480
B	35° 52'.100	014° 34'.550
C	35° 51'.916	014° 34'.642
D	35° 51'.858	014° 34'.479
E	35° 52'.019	014° 34'.398

Off Qawra point **Imperial Eagle** formed by joining the points A, B, C and D,
as seen on the attached chart D.

A	35° 57'.983	014° 26'.033
B	35° 57'.833	014° 26'.233
C	35° 57'.683	014° 26'.033
D	35° 57'.833	014° 25'.850

Off Cirkewwa **Rozi
P29** formed by joining the points A, B, C, D, E, and
the intermediate coastline, as seen on the
attached chart E.

A	35° 59'.224	014° 19'.645
B	35° 59'.148	014° 19'.555
C	35° 59'.299	014° 19'.365
D	35° 59'.491	014° 19'.588
E	35° 59'.387	014° 19'.716

Off Xrobb I-Ghagin **Blenheim
bomber** formed by joining the points A, B, C and D,
as seen on the attached chart F.

A	35° 50'.267	014° 34'.467
B	35° 50'.117	014° 34'.667
C	35° 49'.950	014° 34'.467
D	35° 50'.117	014° 34'.283



Transport Malta

Off Exiles point	Bristol Beaufighter	formed by joining the points A, B, C and D, as seen on the attached chart G.												
		<table border="0"> <tbody> <tr> <td>A</td> <td>35° 55'.617</td> <td>014° 30'.183</td> </tr> <tr> <td>B</td> <td>35° 55'.467</td> <td>014° 30'.367</td> </tr> <tr> <td>C</td> <td>35° 55'.300</td> <td>014° 30'.183</td> </tr> <tr> <td>D</td> <td>35° 55'.467</td> <td>014° 29'.983</td> </tr> </tbody> </table>	A	35° 55'.617	014° 30'.183	B	35° 55'.467	014° 30'.367	C	35° 55'.300	014° 30'.183	D	35° 55'.467	014° 29'.983
A	35° 55'.617	014° 30'.183												
B	35° 55'.467	014° 30'.367												
C	35° 55'.300	014° 30'.183												
D	35° 55'.467	014° 29'.983												
Off Il-Ponta ta' San Giljan	Tug 2	100m radius centered on point A, as shown on the attached chart H.												
		<table border="0"> <tbody> <tr> <td>A</td> <td>35° 55'.228</td> <td>014° 29'.927</td> </tr> </tbody> </table>	A	35° 55'.228	014° 29'.927									
A	35° 55'.228	014° 29'.927												
South entrance Of Blue Lagoon	P 31	200m radius centered on point A, as shown on the attached chart I.												
		<table border="0"> <tbody> <tr> <td>A</td> <td>36° 00'.540</td> <td>014° 19'.387</td> </tr> </tbody> </table>	A	36° 00'.540	014° 19'.387									
A	36° 00'.540	014° 19'.387												
Off Saint George's Point	Anadrian	100m radius centered on point A, as shown on the attached chart J.												
		<table border="0"> <tbody> <tr> <td>A</td> <td>35° 56'.967</td> <td>014° 30'.466</td> </tr> </tbody> </table>	A	35° 56'.967	014° 30'.466									
A	35° 56'.967	014° 30'.466												
Off Il-Ponta Tal-Qawra	Barge 1	100m radius centered on point B, as shown on the attached chart J.												
		<table border="0"> <tbody> <tr> <td>B</td> <td>35° 58'.743</td> <td>014° 29'.606</td> </tr> </tbody> </table>	B	35° 58'.743	014° 29'.606									
B	35° 58'.743	014° 29'.606												
Off Il-Ponta Tal-Qawra	Barge 2	100m radius centered on point C, as shown on the attached chart J.												
		<table border="0"> <tbody> <tr> <td>C</td> <td>35° 58'.684</td> <td>014° 28'.735</td> </tr> </tbody> </table>	C	35° 58'.684	014° 28'.735									
C	35° 58'.684	014° 28'.735												
Off Selmunett	HMS Stubborn	100m radius centered on point D, as shown on the attached chart J.												
		<table border="0"> <tbody> <tr> <td>D</td> <td>35° 58'.958</td> <td>014° 26'.772</td> </tr> </tbody> </table>	D	35° 58'.958	014° 26'.772									
D	35° 58'.958	014° 26'.772												



Transport Malta

Off Ras Il-Qammieh	Scotts Craig	100m radius centered on point A, as shown on the attached chart K.
		A 35° 57'.853 014° 20'.000
Off Dahlet Ix-Xilep	MV Pippo	100m radius centered on point A, as shown on the attached chart L.
		A 35° 59'.184 014° 23'.702

Within these Conservation Areas, only vessels engaged in recreational/technical diving operations are permitted to enter or moor within, only after pre-notification to the Valletta VTS on VHF channel 12. Masters of diving support vessels are to ensure that the appropriate signals in accordance with the International Convention for the Prevention of Collisions at Sea and the International Code of Signals, are always shown.

In the interest of safety, **ALL** other vessels are to remain clear of the Conservation Areas, are to maintain a safe distance and always navigate at safe speed.

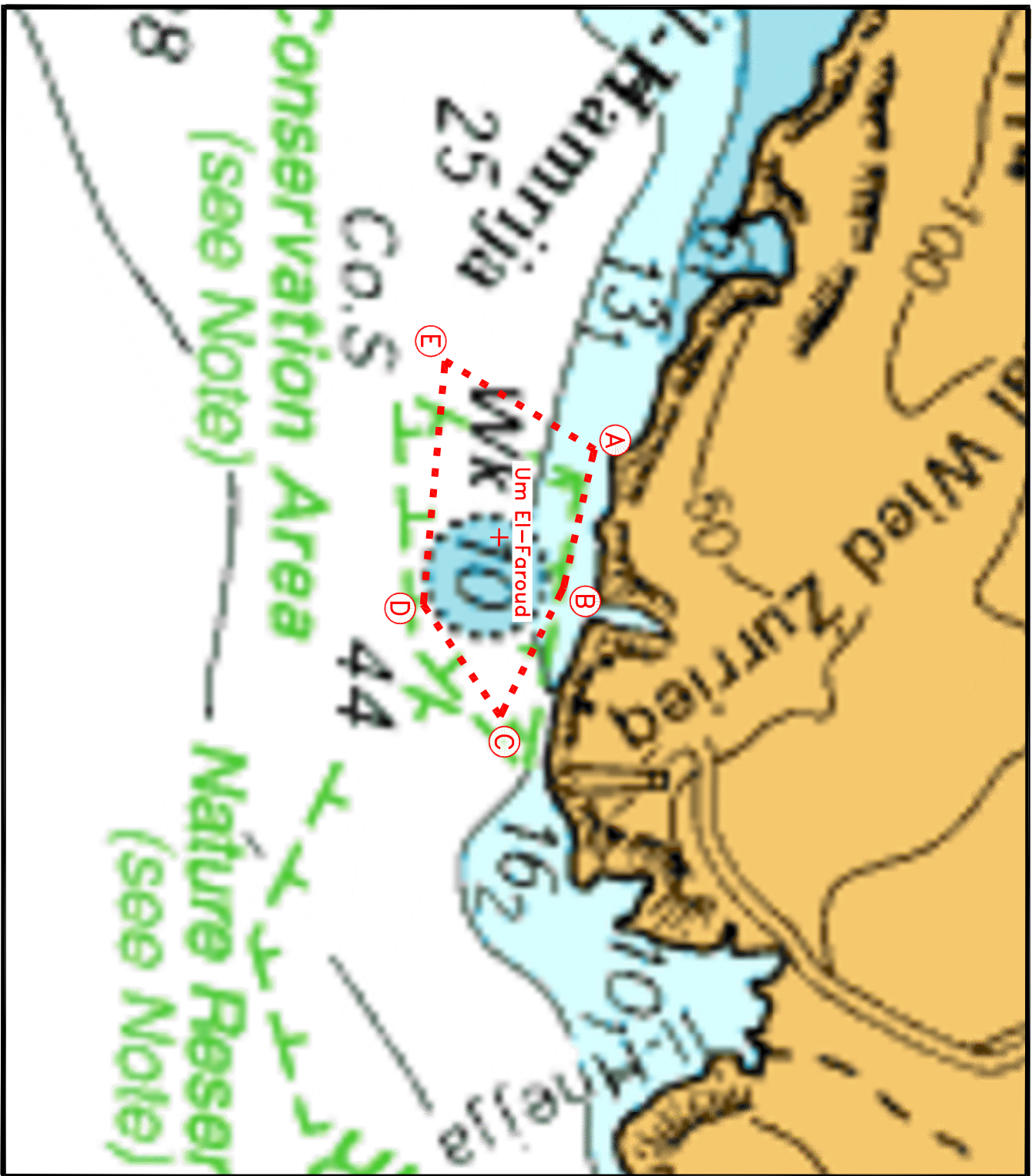
Furthermore, spear fishing and the use of fishing gear such as trolling lines (rixa), set bottom lines, trammel nets, gill nets and entangling nets, encircling nets, demersal pots and traps are prohibited within the Conservation Areas.

With the exception of the conservation areas at Wied iz-Zurrieq, Off Xatt l-Ahmar, Marsacala, Off Cirkewwa & Off Il-Ponta ta' San Giljan, the use of fishing gear such as trolling lines (rixa) is permitted within the other conservation areas subject that no diving vessel displaying the Alpha Flag is present.

Local Notice to Mariners N° 215 of 2023 is hereby **SUPERSEDED**.

Charts Affected: BA 177, 194, 211A, 211B, 2537, 2538.

Positions are referred to WGS84 DATUM



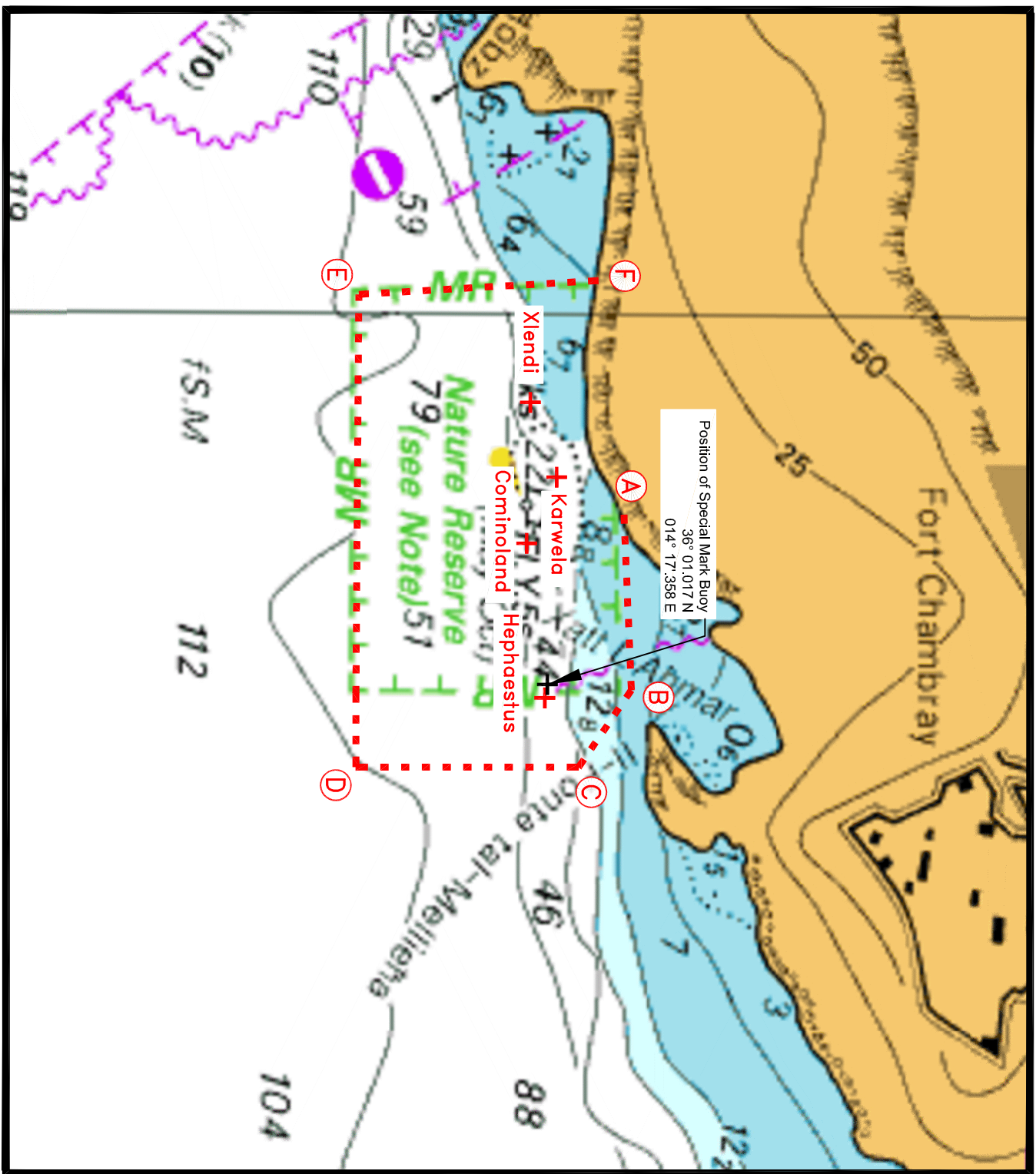
© British Crown Copyright 1970, 1983, 1986, 1988, 1999, 2000
All rights reserved.

The UK Hydrographic Office makes the accompanying data
Available to Malta Maritime Authority (Transport Malta)
Under the terms and conditions of agreement HO 1427/020930/01.

DISCLAIMER

Whilst the UK Hydrographic Office has endeavoured to ensure
That the material supplied is suitable for the purpose described,
It accepts no liability (to the maximum extent permitted by law)
For any damage or loss of any nature arising from its use.
The material supplied is used entirely at the Recipient's own risk.

Chart A



© British Crown Copyright 1970, 1983, 1986, 1988, 1999, 2000
All rights reserved.

The UK Hydrographic Office makes the accompanying data
Available to Malta Maritime Authority (Transport Malta)
Under the terms and conditions of agreement HO 1427/020930/01.

DISCLAIMER

Whilst the UK Hydrographic Office has endeavoured to ensure
That the material supplied is suitable for the purpose described,
It accepts no liability (to the maximum extent permitted by law)
For any damage or loss of any nature arising from its use.
The material supplied is used entirely at the Recipient's own risk.

Chart B

© British Crown Copyright 1970, 1983, 1986, 1988, 1999, 2000
All rights reserved.

The UK Hydrographic Office makes the accompanying data
Available to Malta Maritime Authority (Transport Malta)
Under the terms and conditions of agreement HO 1427/020930/01.

DISCLAIMER

Whilst the UK Hydrographic Office has endeavoured to ensure
That the material supplied is suitable for the purpose described,
It accepts no liability (to the maximum extent permitted by law)
For any damage or loss of any nature arising from its use.
The material supplied is used entirely at the Recipient's own risk.

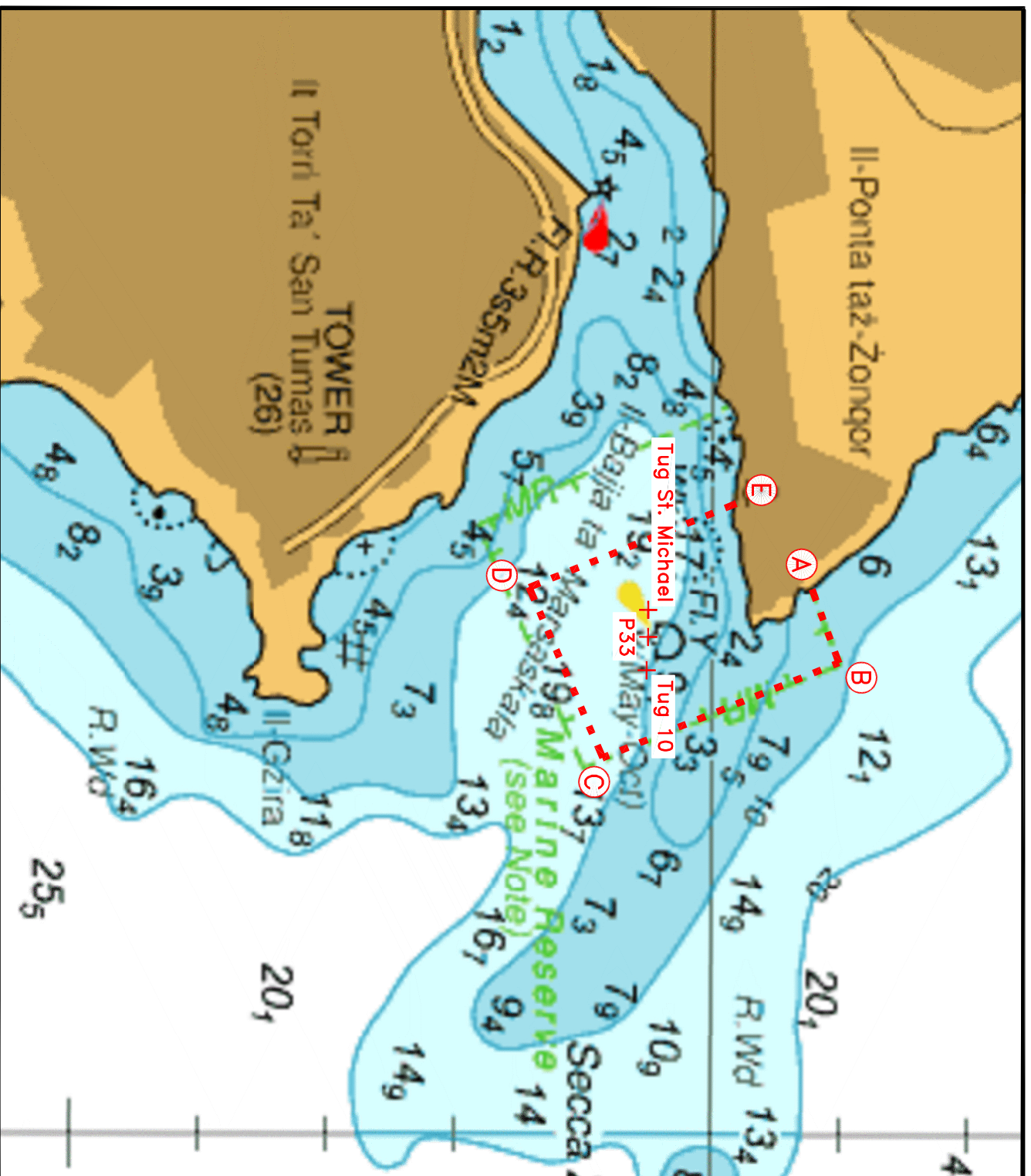
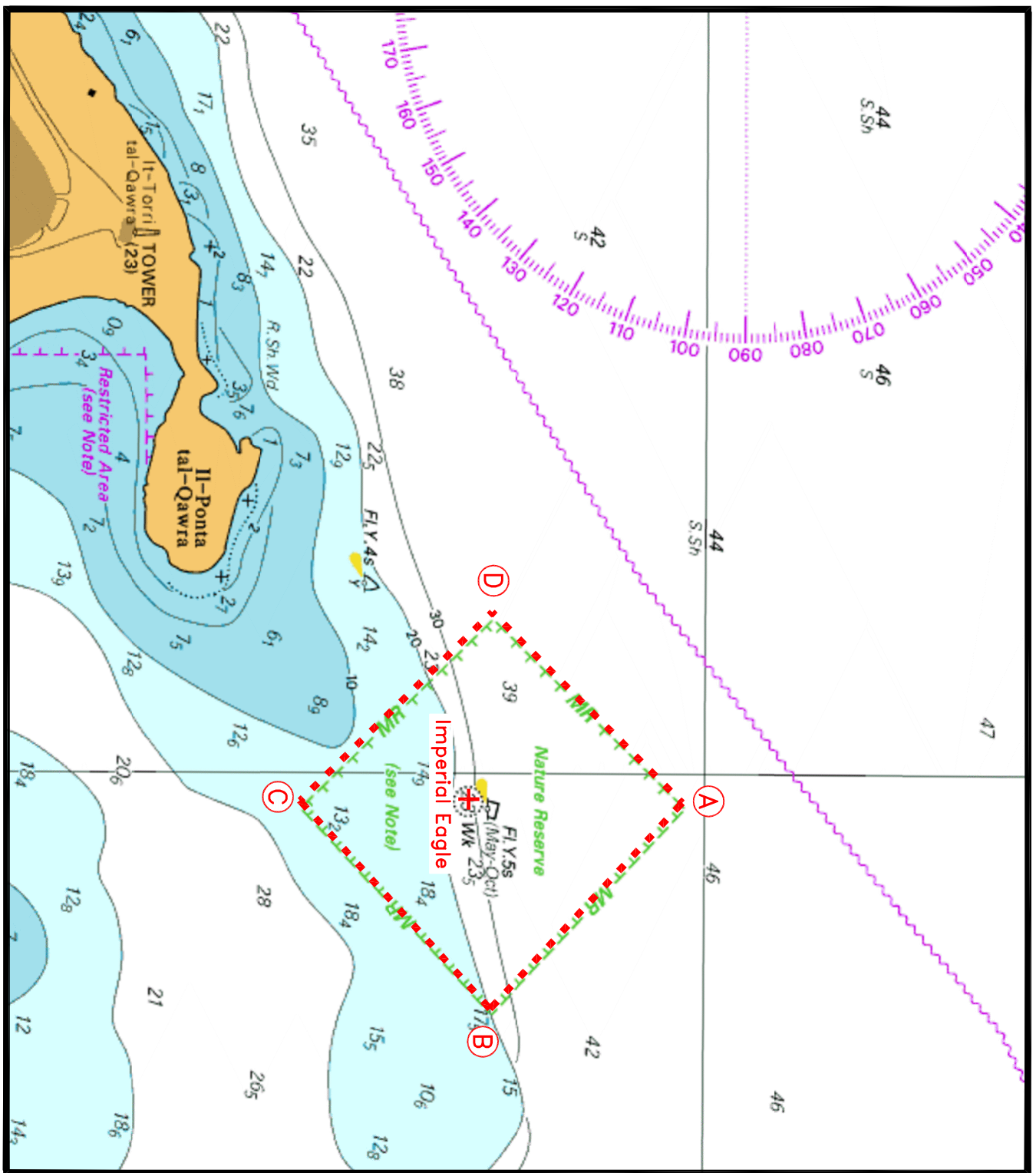


Chart C



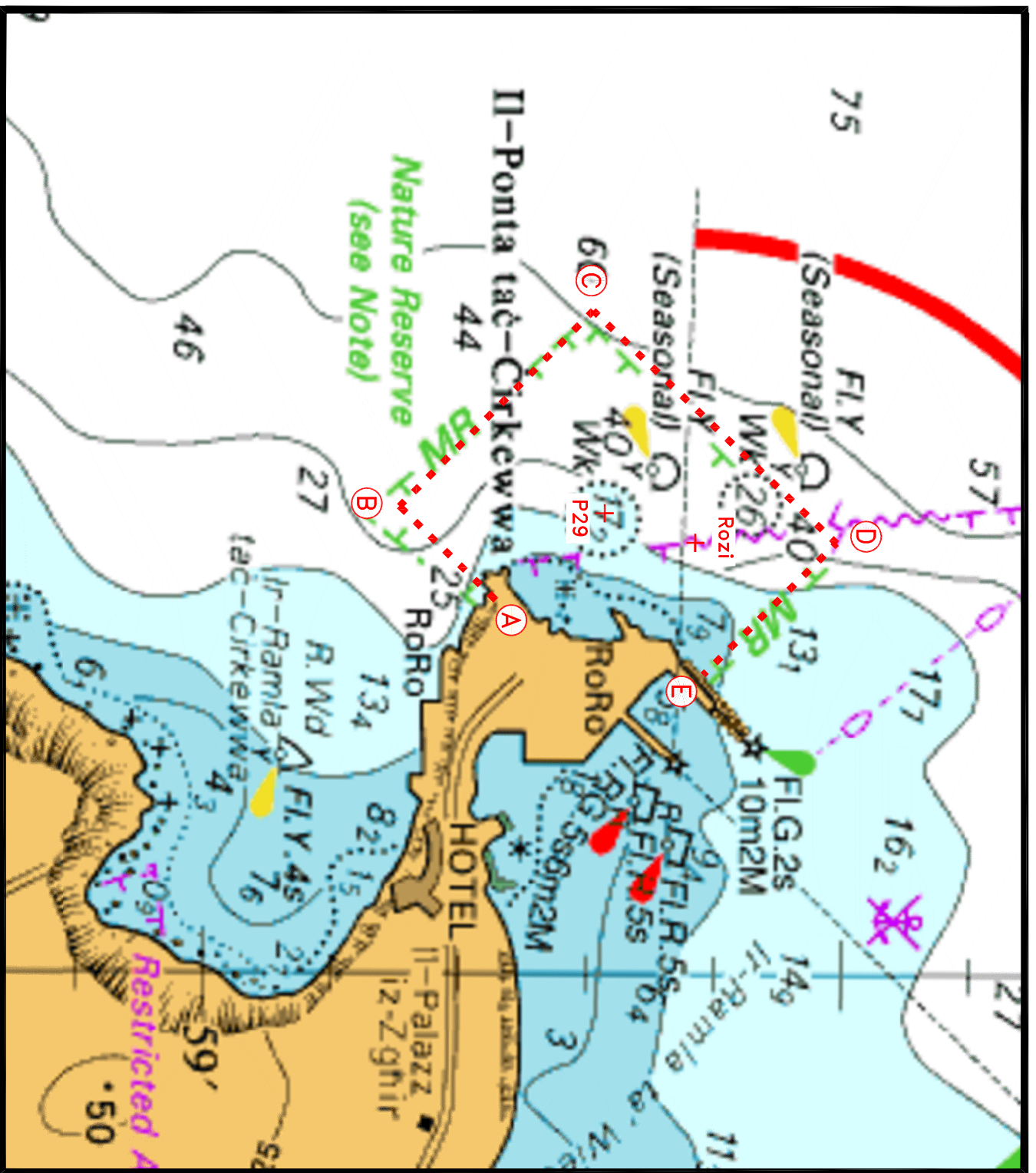
© British Crown Copyright 1970, 1983, 1986, 1988, 1999, 2000
All rights reserved.

The UK Hydrographic Office makes the accompanying data
Available to Malta Maritime Authority (Transport Malta)
Under the terms and conditions of agreement HO 1427/020930/01.

DISCLAIMER

Whilst the UK Hydrographic Office has endeavoured to ensure
That the material supplied is suitable for the purpose described,
It accepts no liability (to the maximum extent permitted by law)
For any damage or loss of any nature arising from its use.
The material supplied is used entirely at the Recipient's own risk.

Chart D



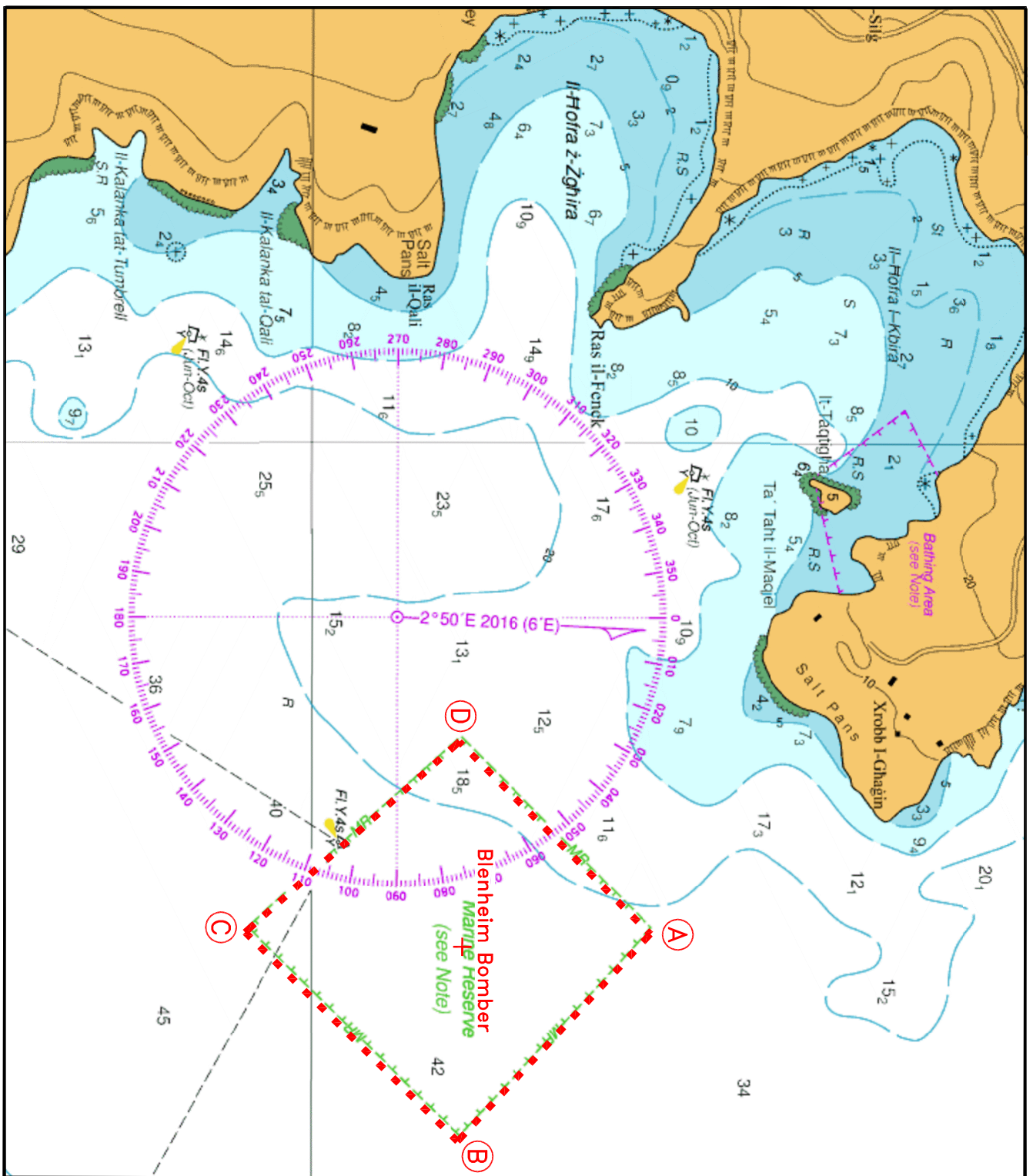
© British Crown Copyright 1970, 1983, 1986, 1988, 1999, 2000
All rights reserved.

The UK Hydrographic Office makes the accompanying data
Available to Malta Maritime Authority (Transport Malta)
Under the terms and conditions of agreement HO 1427/020930/01.

DISCLAIMER

Whilst the UK Hydrographic Office has endeavoured to ensure
That the material supplied is suitable for the purpose described,
It accepts no liability (to the maximum extent permitted by law)
For any damage or loss of any nature arising from its use.
The material supplied is used entirely at the Recipient's own risk.

Chart E



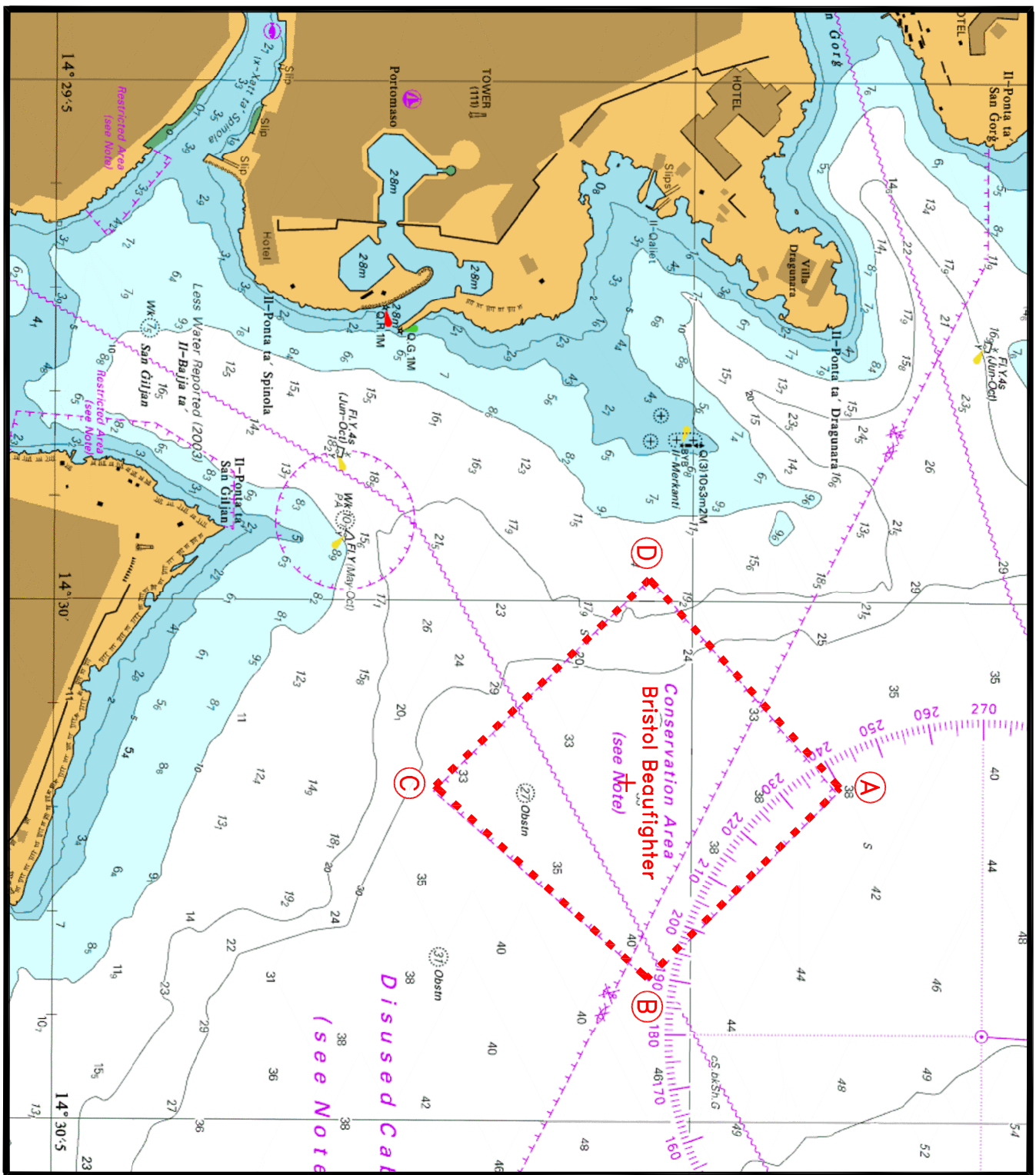
© British Crown Copyright 1970, 1983, 1986, 1988, 1999, 2000
All rights reserved.

The UK Hydrographic Office makes the accompanying data
Available to Malta Maritime Authority (Transport Malta)
Under the terms and conditions of agreement HO 1427/020930/01.

DISCLAIMER

Whilst the UK Hydrographic Office has endeavoured to ensure
That the material supplied is suitable for the purpose described,
it accepts no liability (to the maximum extent permitted by law)
For any damage or loss of any nature arising from its use.
The material supplied is used entirely at the Recipient's own risk.

Chart F



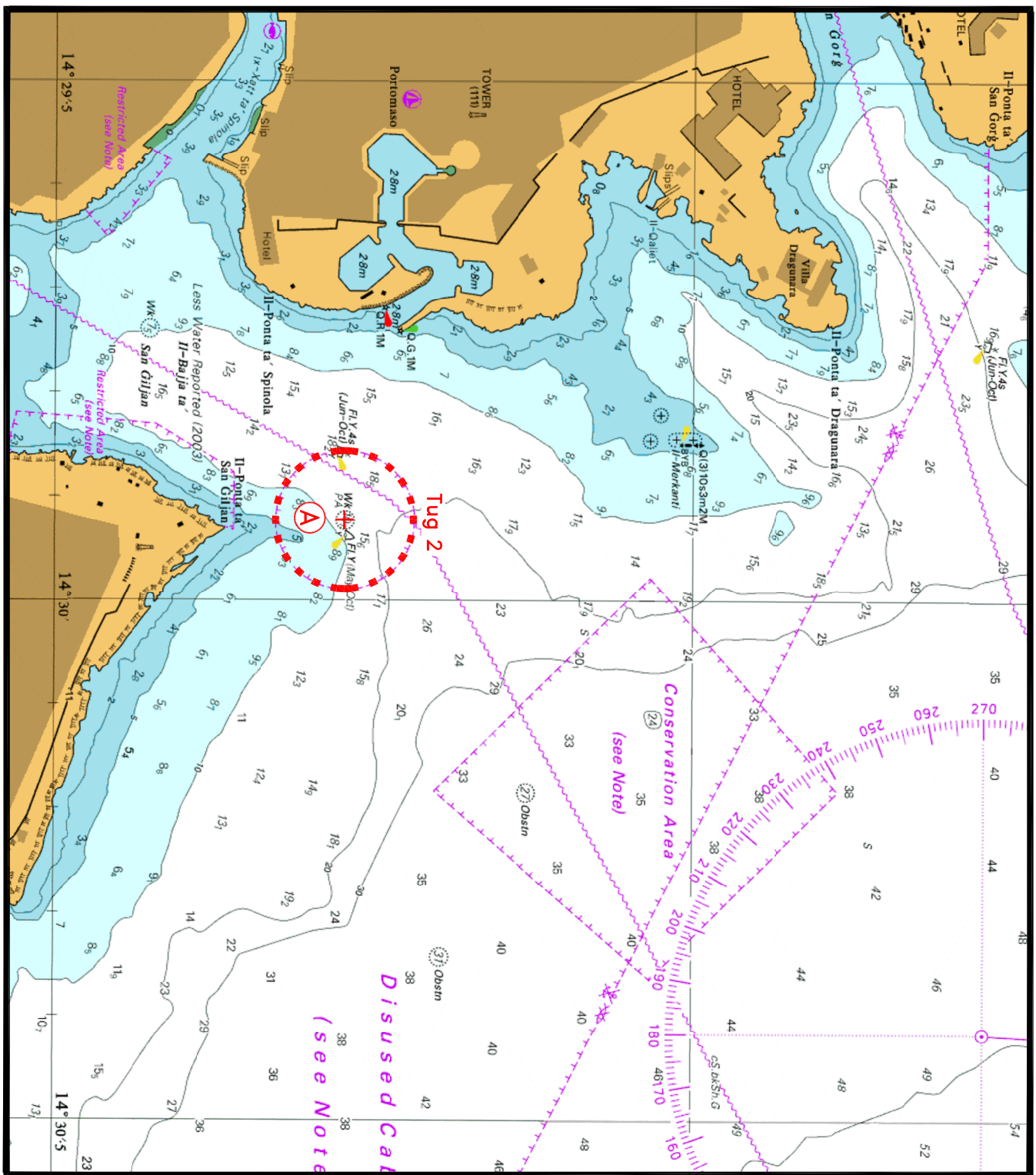
© British Crown Copyright 1970, 1983, 1986, 1988, 1999, 2000
All rights reserved.

The UK Hydrographic Office makes the accompanying data
Available to Malta Maritime Authority (Transport Malta)
Under the terms and conditions of agreement HO 1427/020930/01.

DISCLAIMER

Whilst the UK Hydrographic Office has endeavoured to ensure
That the material supplied is suitable for the purpose described,
it accepts no liability (to the maximum extent permitted by law)
For any damage or loss of any nature arising from its use.
The material supplied is used entirely at the Recipient's own risk.

Chart G



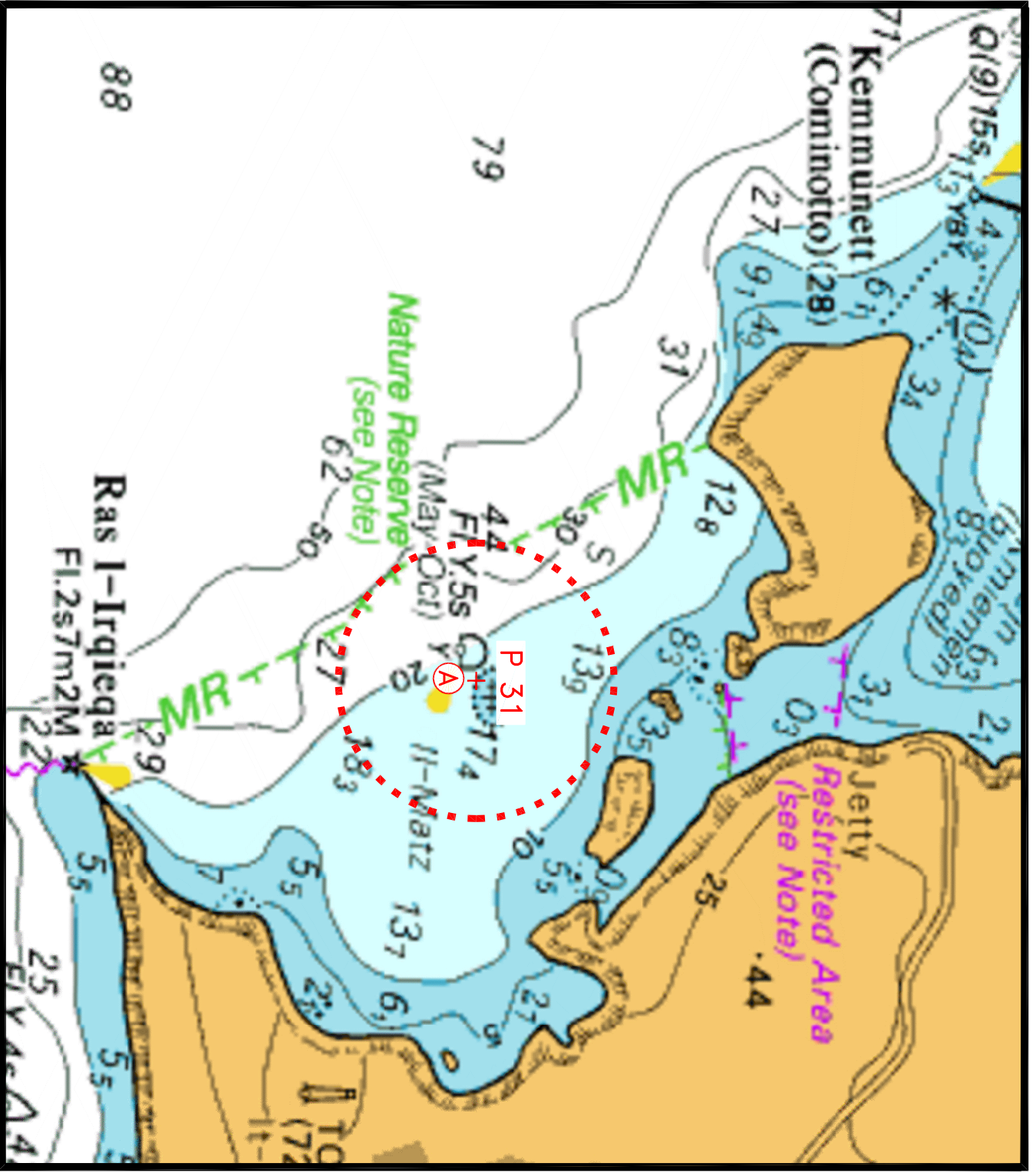
© British Crown Copyright 1970, 1983, 1986, 1988, 1999, 2000
All rights reserved.

The UK Hydrographic Office makes the accompanying data
Available to Malta Maritime Authority (Transport Malta)
Under the terms and conditions of agreement HO 1427/020930/01.

DISCLAIMER

Whilst the UK Hydrographic Office has endeavoured to ensure
That the material supplied is suitable for the purpose described,
It accepts no liability (to the maximum extent permitted by law)
For any damage or loss of any nature arising from its use.
The material supplied is used entirely at the Recipient's own risk.

Chart H



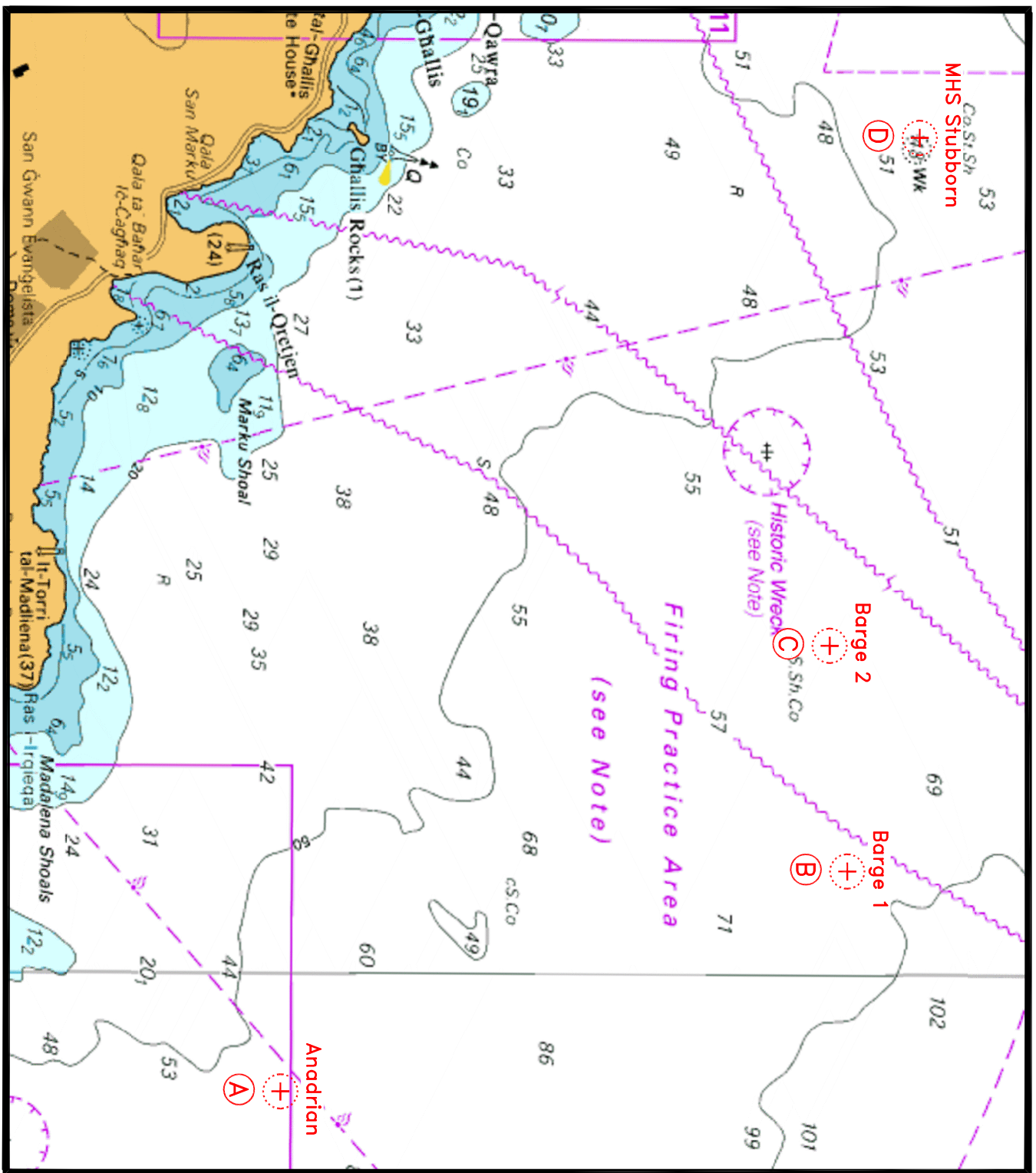
© British Crown Copyright 1970, 1983, 1986, 1988, 1999, 2000
All rights reserved.

The UK Hydrographic Office makes the accompanying data
Available to Malta Maritime Authority (Transport Malta)
Under the terms and conditions of agreement HO 1427/020930/01.

DISCLAIMER

Whilst the UK Hydrographic Office has endeavoured to ensure
That the material supplied is suitable for the purpose described,
it accepts no liability (to the maximum extent permitted by law)
For any damage or loss of any nature arising from its use.
The material supplied is used entirely at the Recipient's own risk.

Chart I



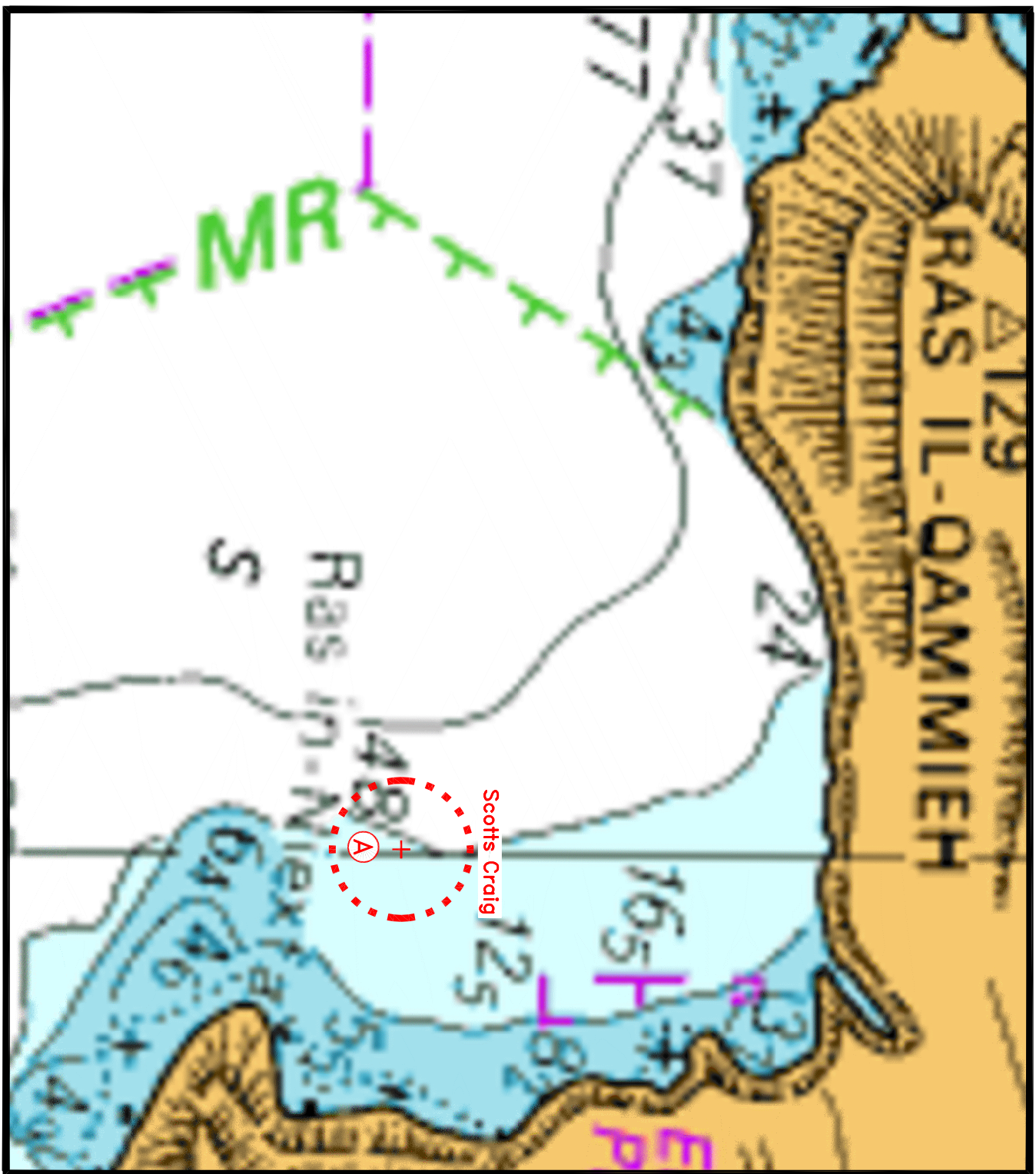
© British Crown Copyright 1970, 1983, 1986, 1988, 1999, 2000
All rights reserved.

The UK Hydrographic Office makes the accompanying data
Available to Malta Maritime Authority (Transport Malta)
Under the terms and conditions of agreement HO 1427/020930/01.

DISCLAIMER

Whilst the UK Hydrographic Office has endeavoured to ensure
That the material supplied is suitable for the purpose described,
It accepts no liability (to the maximum extent permitted by law)
For any damage or loss of any nature arising from its use.
The material supplied is used entirely at the Recipient's own risk.

Chart J



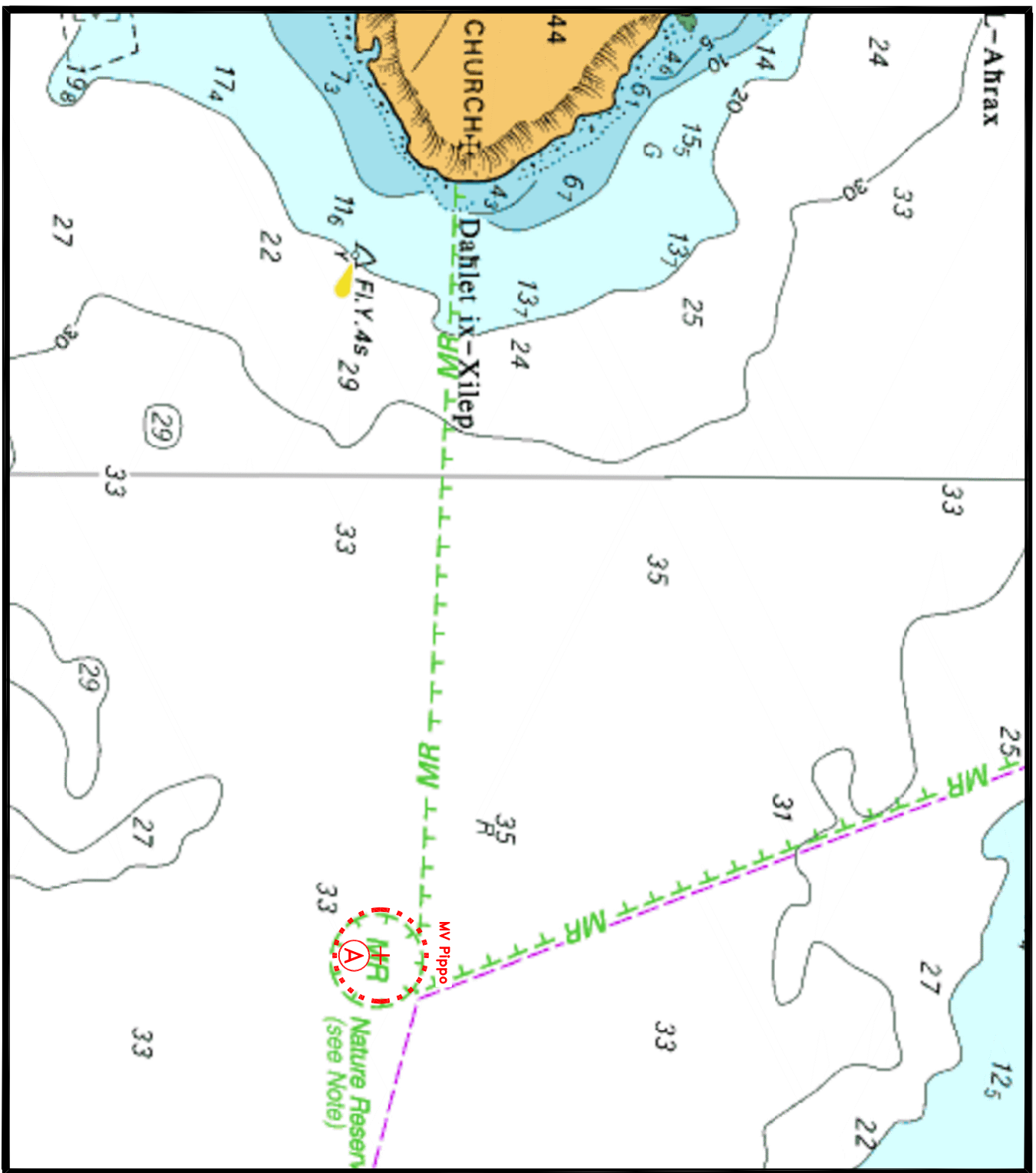
© British Crown Copyright 1970, 1983, 1986, 1988, 1999, 2000
All rights reserved.

The UK Hydrographic Office makes the accompanying data
Available to Malta Maritime Authority (Transport Malta)
Under the terms and conditions of agreement HO 1427/020930/01.

DISCLAIMER

Whilst the UK Hydrographic Office has endeavoured to ensure
That the material supplied is suitable for the purpose described,
It accepts no liability (to the maximum extent permitted by law)
For any damage or loss of any nature arising from its use.
The material supplied is used entirely at the Recipient's own risk.

Chart K



© British Crown Copyright 1970, 1983, 1986, 1988, 1999, 2000
All rights reserved.

The UK Hydrographic Office makes the accompanying data
Available to Malta Maritime Authority (Transport Malta)
Under the terms and conditions of agreement HO 1427/020930/01.

DISCLAIMER

Whilst the UK Hydrographic Office has endeavoured to ensure
That the material supplied is suitable for the purpose described,
It accepts no liability (to the maximum extent permitted by law)
For any damage or loss of any nature arising from its use.
The material supplied is used entirely at the Recipient's own risk.

Chart L