



PORTS AND YACHTING DIRECTORATE

LOCAL NOTICE TO MARINERS N° 064 of 2024

Our Ref: **TM/PYD/132/89**

28 June 2024



Transport Malta

Malta Transport Centre,
Triq Pantar, Hal Lija, LJA 2021
Malta

Tel: (356) 2122 2203
Fax: (356) 2125 0365
Email: info.tm@transport.gov.mt

www.transport.gov.mt

Filming at various localities in the northern part of Malta - Chum

The Ports and Yachting Directorate, Transport Malta notifies all mariners, owners of vessels and divers, that filming activities will take place in four localities in the northern part of Malta.

The filming will be held between Thursday 11th and Wednesday 31st July 2024.

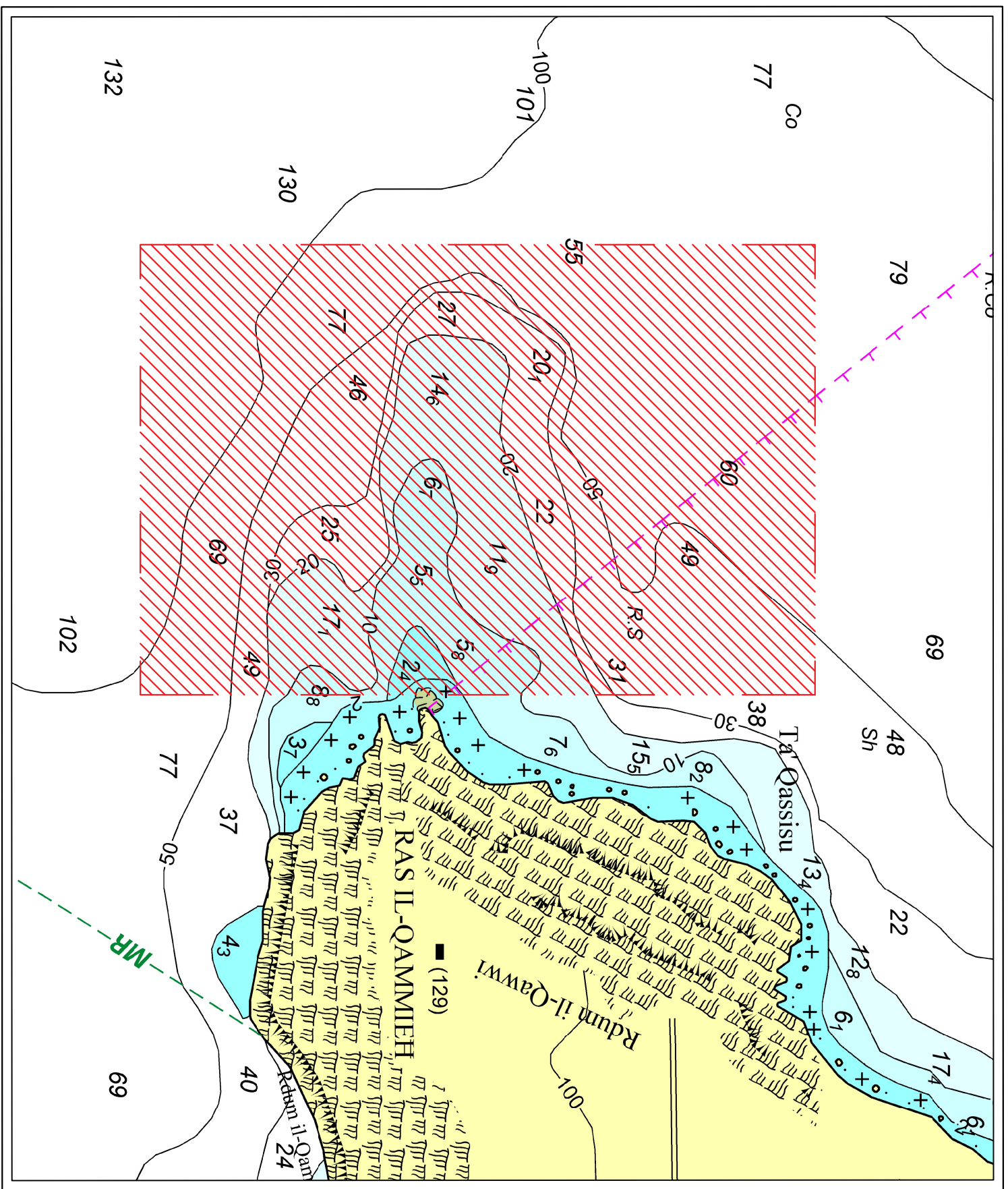
All mariners, owners of vessels and divers are to be notified that there will be limited access on the above-mentioned dates in the following areas as shown in charts **A** – *Ras il-Qammieħ*, **B** – *Daħlet ix-Xilep/ Ta' l- Imgħarrqa*, **C** - *Ċirkewwa South Quay* and **D** – *Il-Qarraba*.

Mariners and the general public are advised that during the above-mentioned dates, a safe distance must be kept and to avoid anchoring in the areas. Co-operation with the filming crew on site is a must.

Mariners are to navigate with caution at slow speed and give a wide berth when in the vicinity, they are to keep out of the above-mentioned area.

Mariners and vessel operators are to comply with instructions and directions issued on VHF channel 12 and/or 16 by Valletta VTS and by any Enforcement Personnel on site.

Charts affected: **BA 2537**



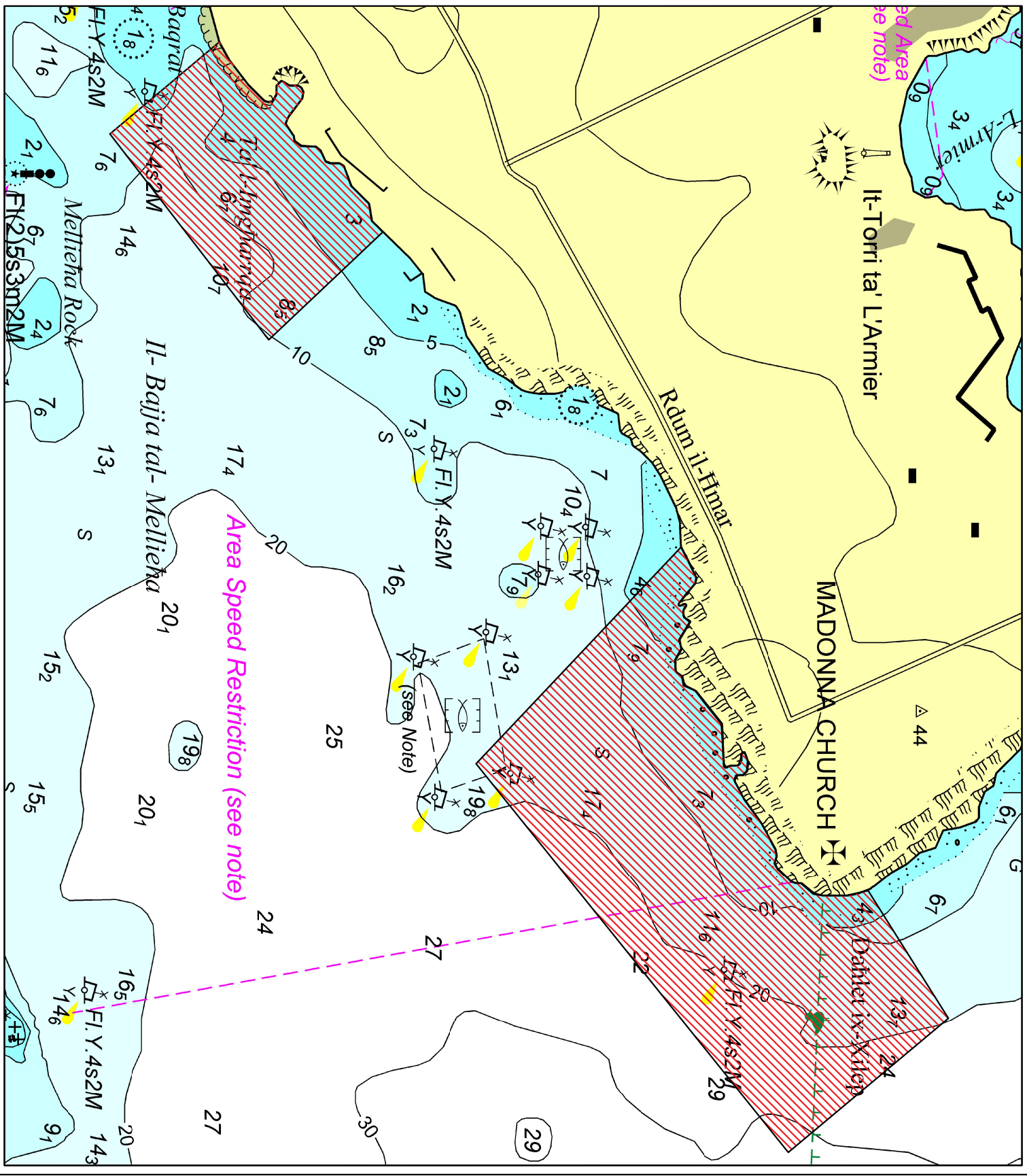
© British Crown Copyright 1970, 1983, 1986, 1988, 1999, 2000
 All rights reserved.

The UK Hydrographic Office makes the accompanying data available to Malta Maritime Authority (Transport Malta) under the terms and conditions of agreement HO 3427/020930/01.

DISCLAIMER

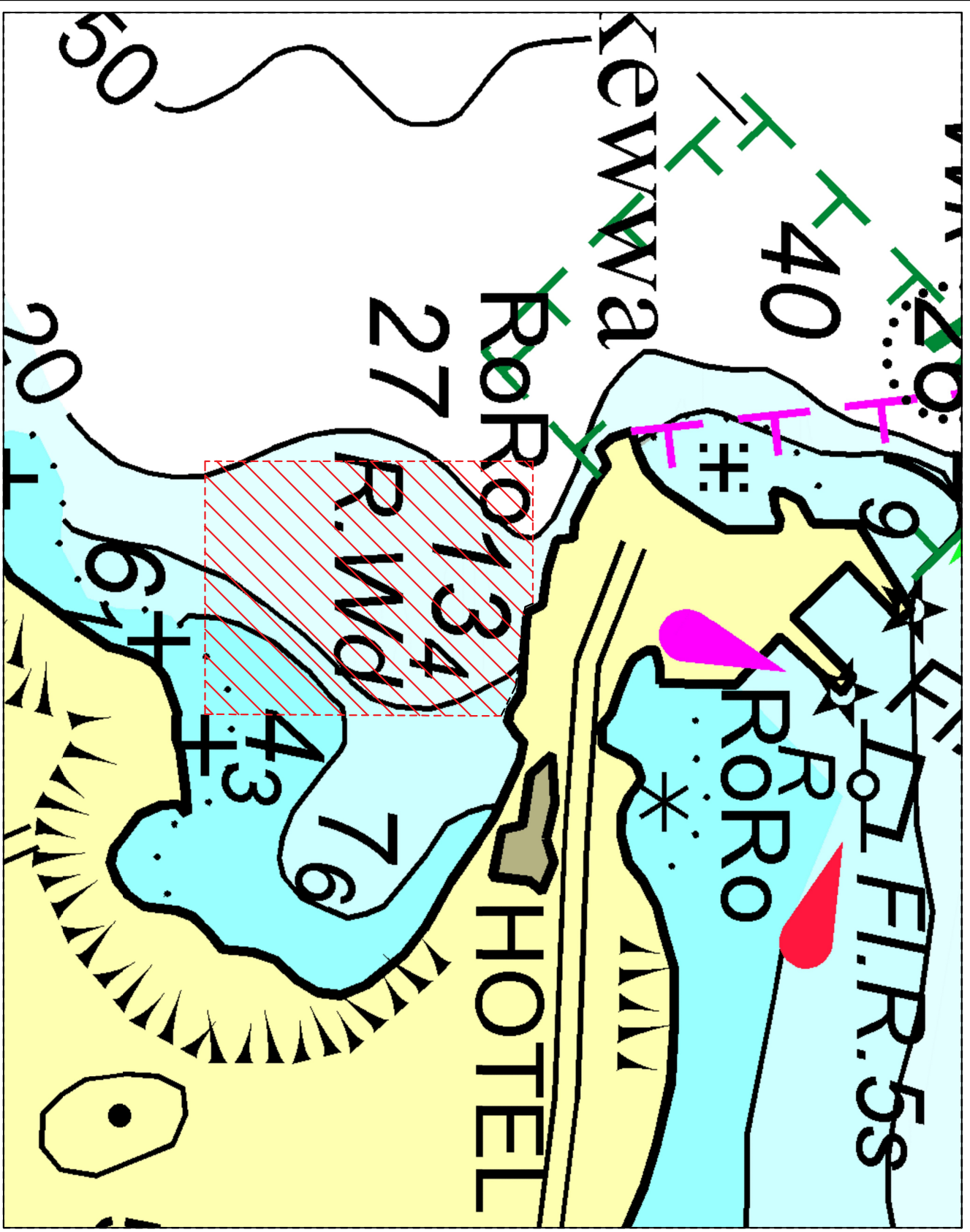
Whilst the UK Hydrographic Office has endeavoured to ensure that the material supplied is suitable for the purpose described, it accepts no liability (to the maximum extent permitted by law) for any damage or loss of any nature arising from its use. The material supplied is used entirely at the Recipient's own risk.

Chart A



© British Crown Copyright 1970, 1983, 1986, 1988, 1989, 2000
 All rights reserved.
 The UK Hydrographic Office makes the accompanying data
 available to Maria Meri Time Author by permission of the
 Controller of Her Britannic Majesty's Stationery Office
 under the terms and conditions of agreement No 142/0002920/01.
 DISCLAIMER
 Whilst the UK Hydrographic Office has endeavored to ensure
 that the material supplied is suitable for the purpose intended,
 it accepts no liability for the maximum extent permitted by law
 for any damage or loss of any nature arising from its use.
 The material supplied shall remain at the recipient's own risk.

Chart B



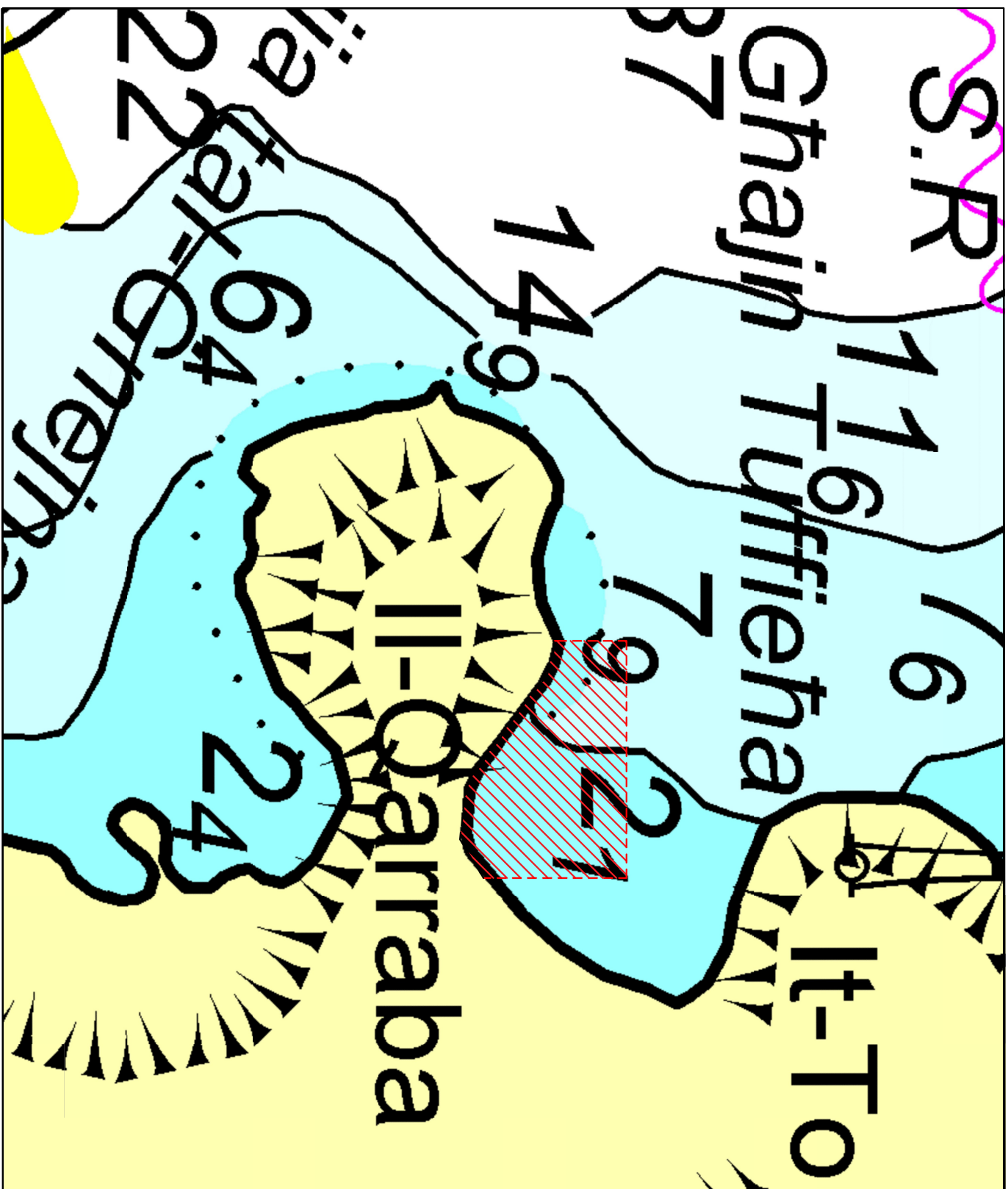
© British Crown Copyright 1970, 1983, 1986, 1988, 1989, 2000
All rights reserved.

The UK Hydrographic Office makes the accompanying data available to Malta Maritime Authority (Transport Malta) under the terms and conditions of agreement HO 1427/020930/01.

DISCLAIMER

Whilst the UK Hydrographic Office has endeavoured to ensure that the material supplied is suitable for the purpose described, it accepts no liability (to the maximum extent permitted by law) for any damage or loss of any nature arising from its use. The material supplied is used entirely at the Recipient's own risk.

Chart C



© British Crown Copyright 1970, 1983, 1986, 1988, 1999, 2000
All rights reserved.

The UK Hydrographic Office makes the accompanying data
Available to Malta Maritime Authority (Transport Malta)
Under the terms and conditions of agreement HO 1427/020930/01.

DISCLAIMER

Whilst the UK Hydrographic Office has endeavoured to ensure
That the material supplied is suitable for the purpose described,
It accepts no liability (to the maximum extent permitted by law)
For any damage or loss of any nature arising from its use.
The material supplied is used entirely at the Recipient's own risk.

Chart D