



PORTS AND YACHTING DIRECTORATE

## LOCAL NOTICE TO MARINERS N° 053 of 2024

Our Ref: **TM/PYD/63/95**

12 June 2024



**Transport Malta**

Malta Transport Centre  
Marsa, MRS 1917  
Malta

Tel: (356) 2122 2203  
Fax: (356) 2125 0365  
Email: [info.tm@transport.gov.mt](mailto:info.tm@transport.gov.mt)

[www.transport.gov.mt](http://www.transport.gov.mt)

### **Hydrographic (Multi-beam) surveys in St. Paul's Bay and Mellieha Bay - BathMalta2 – June 2024**

The Ports and Yachting Directorate, Transport Malta, notifies mariners that a Hydrographic (multi-beam) survey will be carried out in St. Paul' Bay and Mellieha Bay.

The multibeam Hydrographic survey will be carried out between Monday 17<sup>th</sup> June 2024 and Friday 21<sup>st</sup> June 2024 and will be held within the area A, B, C, D, E, F, and the intermediate coastline, as shown on the attached chart.

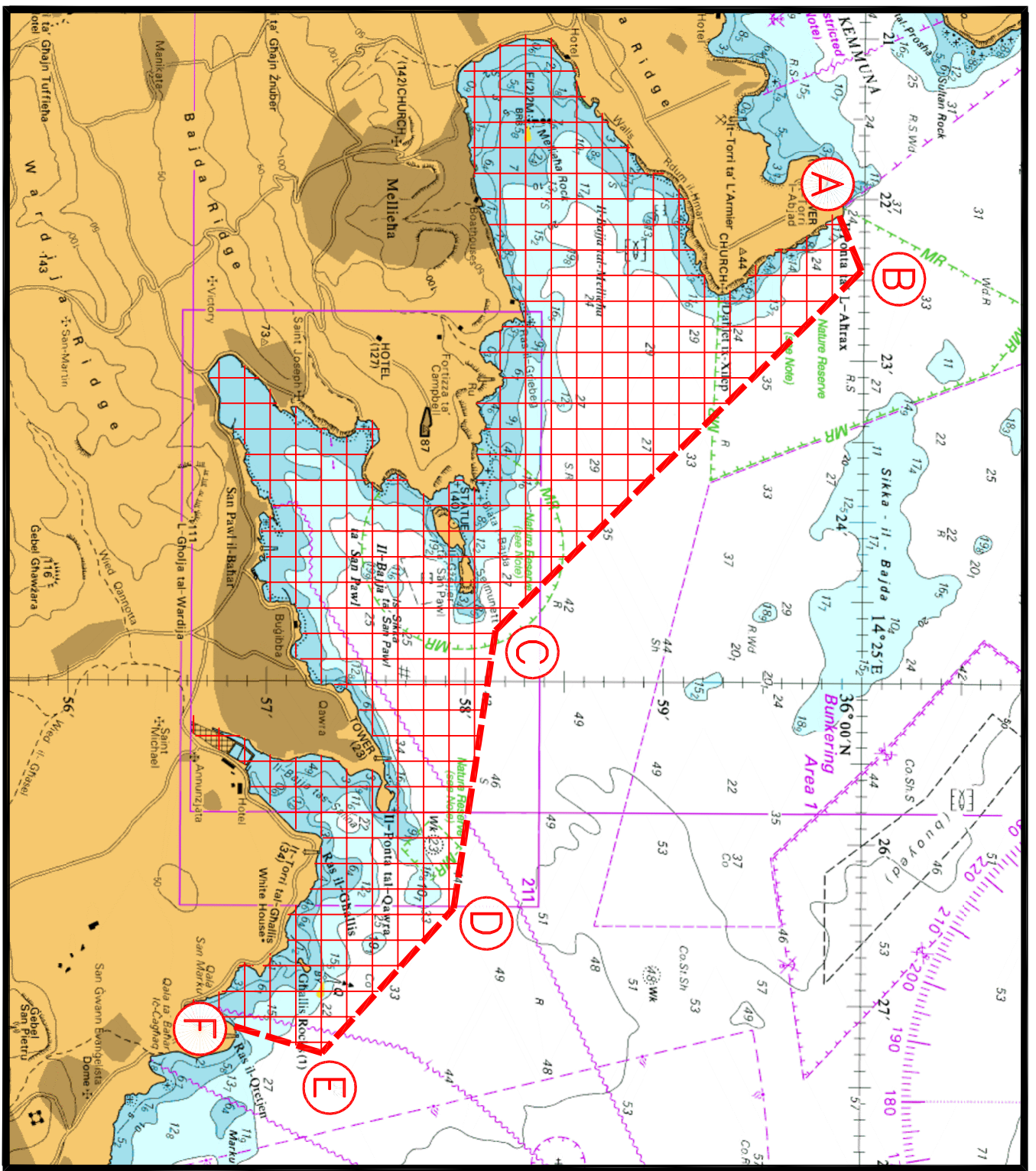
The survey will be carried out in all areas of St. Paul's Bay, Mellieha Bay, Salina Bay that are accessible and safe for the survey vessel to manoeuvre.

A survey-support vessel will be used during the survey, therefore a wide berth of 25m is requested. The support vessel will be moving slowly and will display the international code of Signals flag "D" during the survey.

Masters and operators of vessels are advised to keep a sharp lookout, navigate with caution and at slow speed. All vessels shall give the above-mentioned survey-support vessel a wide berth and shall cooperate with the survey team.

They are to comply with any instructions given on VHF Channel 12 and/or 16, by Valletta VTS and by any Enforcement Personnel on site.

Chart affected: **BA 211, 2537**



© British Crown Copyright 1970, 1983, 1986, 1988, 1999, 2000  
All rights reserved.

The UK Hydrographic Office makes the accompanying data  
Available to Malta Maritime Authority (Transport Malta)  
Under the terms and conditions of agreement HO 1427/020930/01.

**DISCLAIMER**

Whilst the UK Hydrographic Office has endeavoured to ensure  
That the material supplied is suitable for the purpose described,  
it accepts no liability (to the maximum extent permitted by law)  
For any damage or loss of any nature arising from its use.  
The material supplied is used entirely at the Recipient's own risk.