



PORTS AND YACHTING DIRECTORATE

LOCAL NOTICE TO MARINERS N° 051 of 2024

Our Ref: **TM/PYD/ 83/97**

10 June 2024

Transport Malta

Malta Transport Centre
Marsa, MRS 1917
Malta

Tel: (356) 2122 2203
Fax: (356) 2125 0365
Email: info.tm@transport.gov.mt

www.transport.gov.mt

Valletta Pageant of the Seas – June 2024

The Ports and Yachting Directorate, Transport Malta, notifies mariners that the “Pageant of the Seas” event will be held in the Grand Harbour on Saturday 22nd June 2024.

In preparation for the event between Friday 14th June 2024 and Monday 17th June 2024, between 0700 hours and 1800 hours, the fountains and the floating front of house will be set-up at Rinella Bay point A. On Tuesday 18th June 2024 they will be shifting the fountain to point B and the floating front of house to point C, they will both have a light on them as they will remain in position until they are removed at the end of the event on Saturday 22nd June 2024.

On Wednesday 19th June 2024 and Thursday 20th June 2024, rehearsals within area Y, as shown on the attached chart, will be held between 1930 hours and 2300 hours depending on vessel traffic movements.

On Friday 21st June 2024, rehearsals within both areas Y and Z, as shown on the attached chart, will be held between 1930 hours and 2300 hours depending on vessel traffic movements.

On the day of the actual event, Saturday 22nd June 2024, fireworks will be loaded on the pontoons at point A, between 0700 hours and 1300 hours.

The pontoons loaded with fireworks will then be shifted from point A, one to point D and the other to point E, as shown on the attached chart.

POSITION	LATITUDE (N)	LONGITUDE (E)
A	35 °53'.605	014 °31'.542
B	35 °53'.579	014 °30'.993
C	35 °53'.559	014 °31'.012
D	35 °53'.629	014 °31'.071
E	35 °53'.541	014 °30'.924



All traffic movements between Friday 14th June 2024 to Friday 21st June 2024 are to be coordinated on VHF channel 12 by Valletta VTS.

Owners of vessels moored in Il-Bajja tar-Rinella are to remove their vessels and the area is to be kept clear from Friday 21st June 2024 at 0001 hours to Saturday 22nd June 2024 at 2359 hours.

The Grand Harbour will be closed to all traffic on Saturday 22nd June 2024 from 2000 hours to 2300 hours while the events are being held, within the area enclosed by the imagery lines joining points J – K, L – M, N – O, P – Q, R – S, T – W and the intermediate coastline as shown on the attached chart.

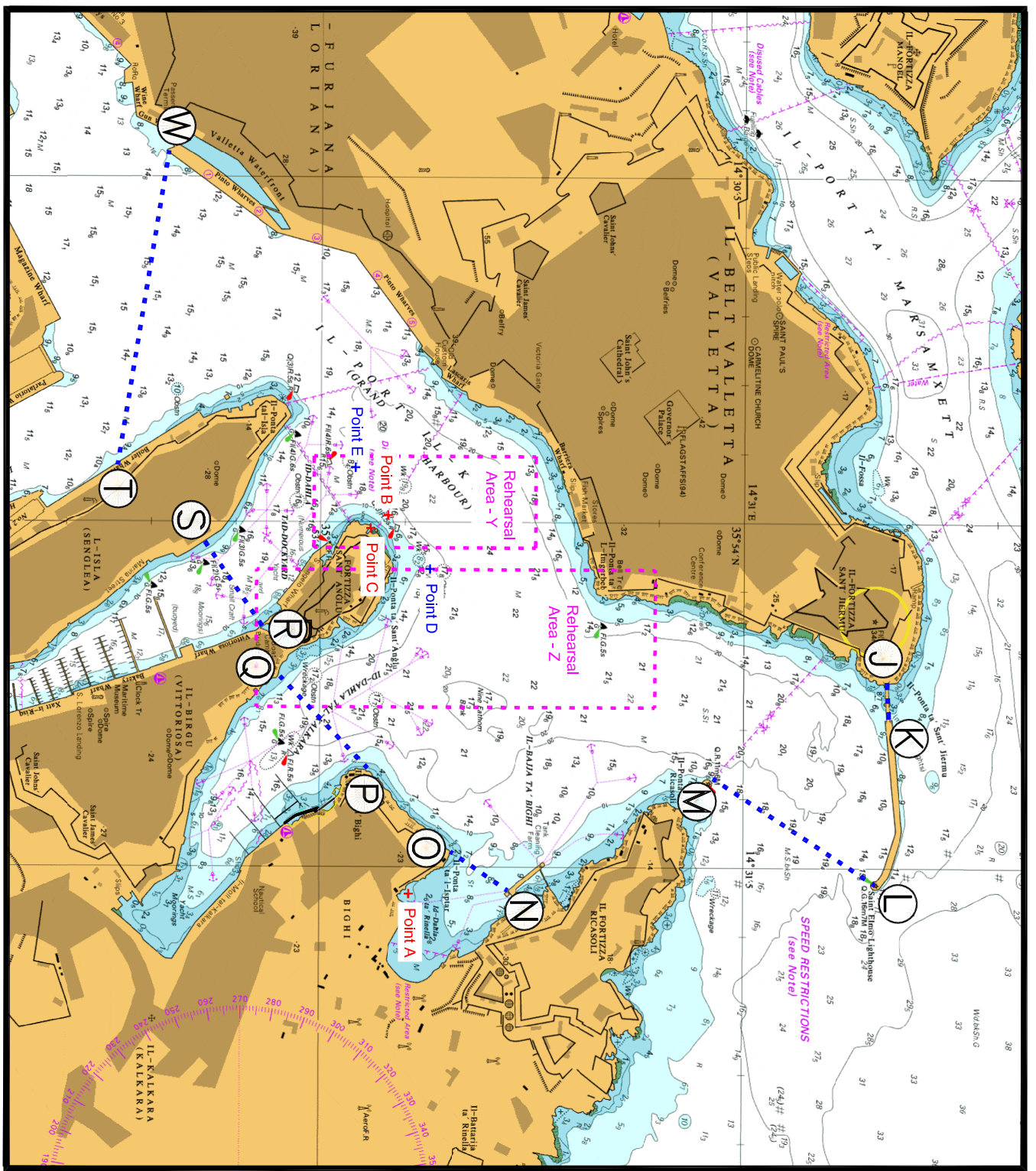
POSITION	LATITUDE (N)	LONGITUDE (E)
J	35°54'.170	014°31'.234
K	35°54'.172	014°31'.286
L	35°54'.157	014°31'.528
M	35°53'.965	014°31'.374
N	35°53'.722	014°31'.538
O	35°53'.658	014°31'.477
P	35°53'.556	014°31'.361
Q	35°53'.452	014°31'.228
R	35°53'.431	014°31'.155
S	35°53'.363	014°31'.032
T	35°53'.260	014°30'.921
W	35°53'.319	014°30'.465

During the event, unauthorized vessels will not be allowed within the restricted area.

Mariners are to comply with instructions and directions issued on VHF Channels 12 and/or 16 by Valletta VTS, and by the Police, the Armed Forces of Malta and Transport Malta Enforcement units that will be in the area.

The Ports and Yachting Directorate, Transport Malta, will not be held responsible or liable, in any manner whatsoever, for any damages or expenses incurred by any person as a consequence of this event, including for failing to abide and comply with the above directions.

Chart Affected: **BA 177**



© British Crown Copyright 1970, 1983, 1986, 1988, 1999, 2000
 All rights reserved.

The UK Hydrographic Office makes the accompanying data
 Available to Malta Maritime Authority (Transport Malta)
 Under the terms and conditions of agreement HO 1427/020930/01.

DISCLAIMER

Whilst the UK Hydrographic Office has endeavoured to ensure
 That the material supplied is suitable for the purpose described,
 It accepts no liability (to the maximum extent permitted by law)
 For any damage or loss of any nature arising from its use.
 The material supplied is used entirely at the Recipient's own risk.