



PORTS AND YACHTING DIRECTORATE

## LOCAL NOTICE TO MARINERS N° 048 of 2024

Our Ref: **TM/PYD 0001/24**

30 May 2024



**Transport Malta**

Malta Transport Centre,  
Triq Pantar, Hal Lija, LJA 2021  
Malta

Tel: (356) 2122 2203  
Fax: (356) 2125 0365  
Email: [info.tm@transport.gov.mt](mailto:info.tm@transport.gov.mt)

[www.transport.gov.mt](http://www.transport.gov.mt)

### Post-repair diving survey of submarine cable GO1 in St Paul's Bay

The Ports and Yachting Directorate, Transport Malta, notifies mariners and owners of vessels that a post-repair diving survey will be held within St. Paul's Bay.

The diving survey will be held between Tuesday 4<sup>th</sup> June 2024 and Monday 10<sup>th</sup> June 2024, within the area formed by the imaginary lines joining A, B, C, and D, as shown in red on the attached chart.

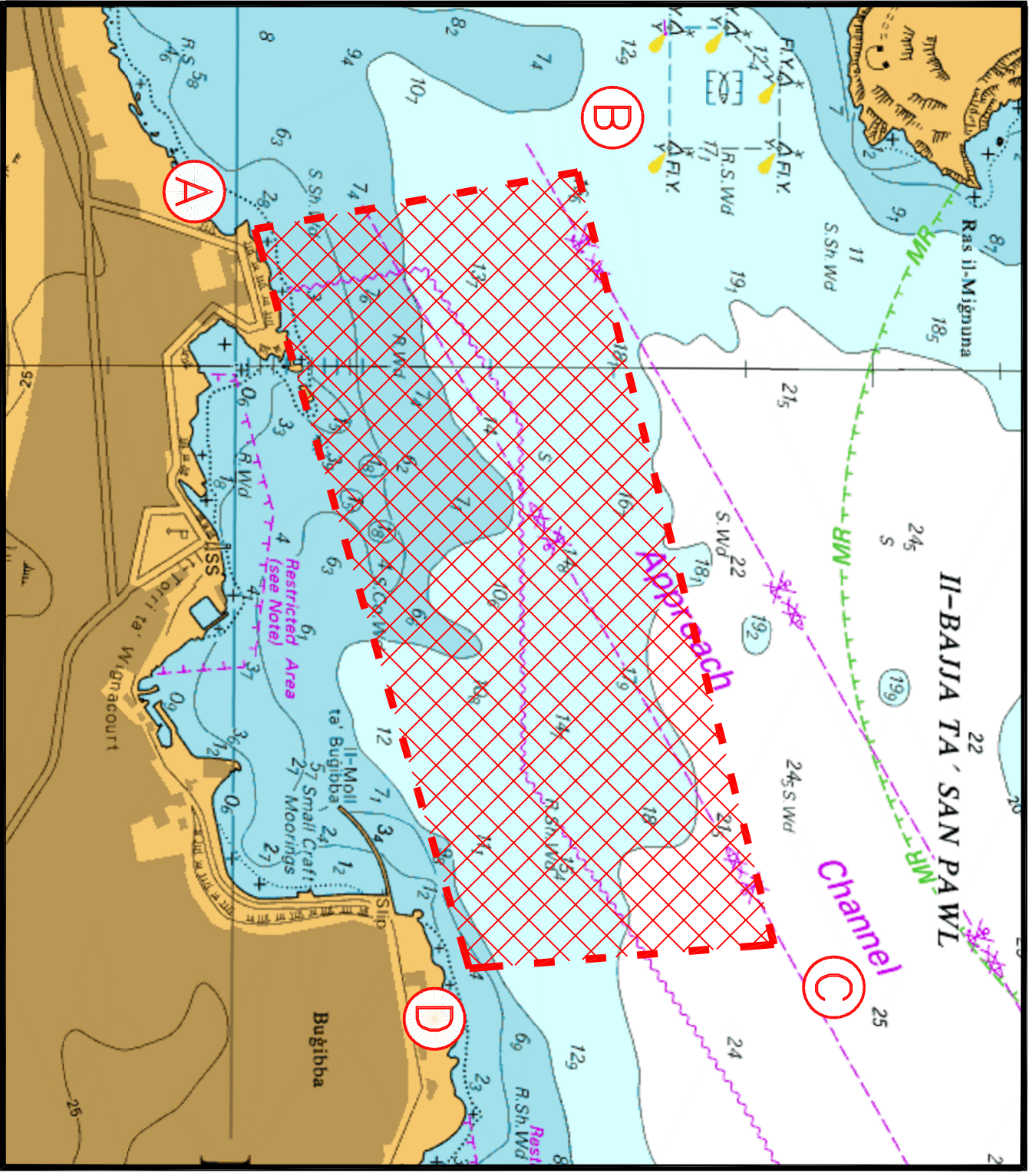
Position	Latitude (N)	Longitude (E)
A	35° 57'.014	014° 23'.873
B	35° 57'.267	014° 23'.816
C	35° 57'.425	014° 24'.560
D	35° 57'.205	014° 24'.583

The survey will be carried out by scuba divers who will be accompanied by the support RHIBs, which will be displaying the International Code of Signals flag "A".

A safety zone of 100m round the support RHIBs is to be kept during the surveys.

Masters and operators of vessels are advised to keep a sharp lookout, proceed with caution and at slow speed when navigating close to the above indicated areas. They are to comply with instructions given on VHF Channel 12 and/or 16 by Valletta VTS.

Chart affected: **BA 211**



© British Crown Copyright 1970, 1983, 1986, 1988, 1999, 2000  
 All rights reserved.

The UK Hydrographic Office makes the accompanying data  
 Available to Malta Maritime Authority (Transport Malta)  
 Under the terms and conditions of agreement HO 1427/020930/01.

**DISCLAIMER**

Whilst the UK Hydrographic Office has endeavoured to ensure  
 That the material supplied is suitable for the purpose described,  
 It accepts no liability (to the maximum extent permitted by law)  
 For any damage or loss of any nature arising from its use.  
 The material supplied is used entirely at the Recipient's own risk.