



PORTS AND YACHTING DIRECTORATE

LOCAL NOTICE TO MARINERS N° 011 OF 2024

Our Ref: **TM/PYD/0001/24**

9 February 2024



Transport Malta

Malta Transport Centre,
Triq Pantar, Hal Lija, LJA 2021
Malta

Tel: (356) 2122 2203
Fax: (356) 2125 0365
Email: info.tm@transport.gov.mt

www.transport.gov.mt

Geotechnical Investigation and Structural Testing on Pont tax-Shell in Birzebbugia

The Ports and Yachting Directorate, Transport Malta, notifies Mariners that Geotechnical investigation and Structural testing will be carried out on Il-Pont tax-Shell (31st March Installation) in Birzebbugia. The investigation will be carried out on any days between Monday 19th February 2024 and Monday 19th March 2024.

The investigations will be carried out within the area formed by the imaginary line joining the points A, B, C, D, E, and the intermediate coastline (as shown on the attached chart).

Point	LATITUDE (N)	LONGITUDE (E)
A	35° 49'.574	014° 31'.981
B	35° 49'.481	014° 32'.039
C	35° 49'.508	014° 32'.106
D	35° 49'.617	014° 32'.038
E	35° 49'.611	014° 32'.023

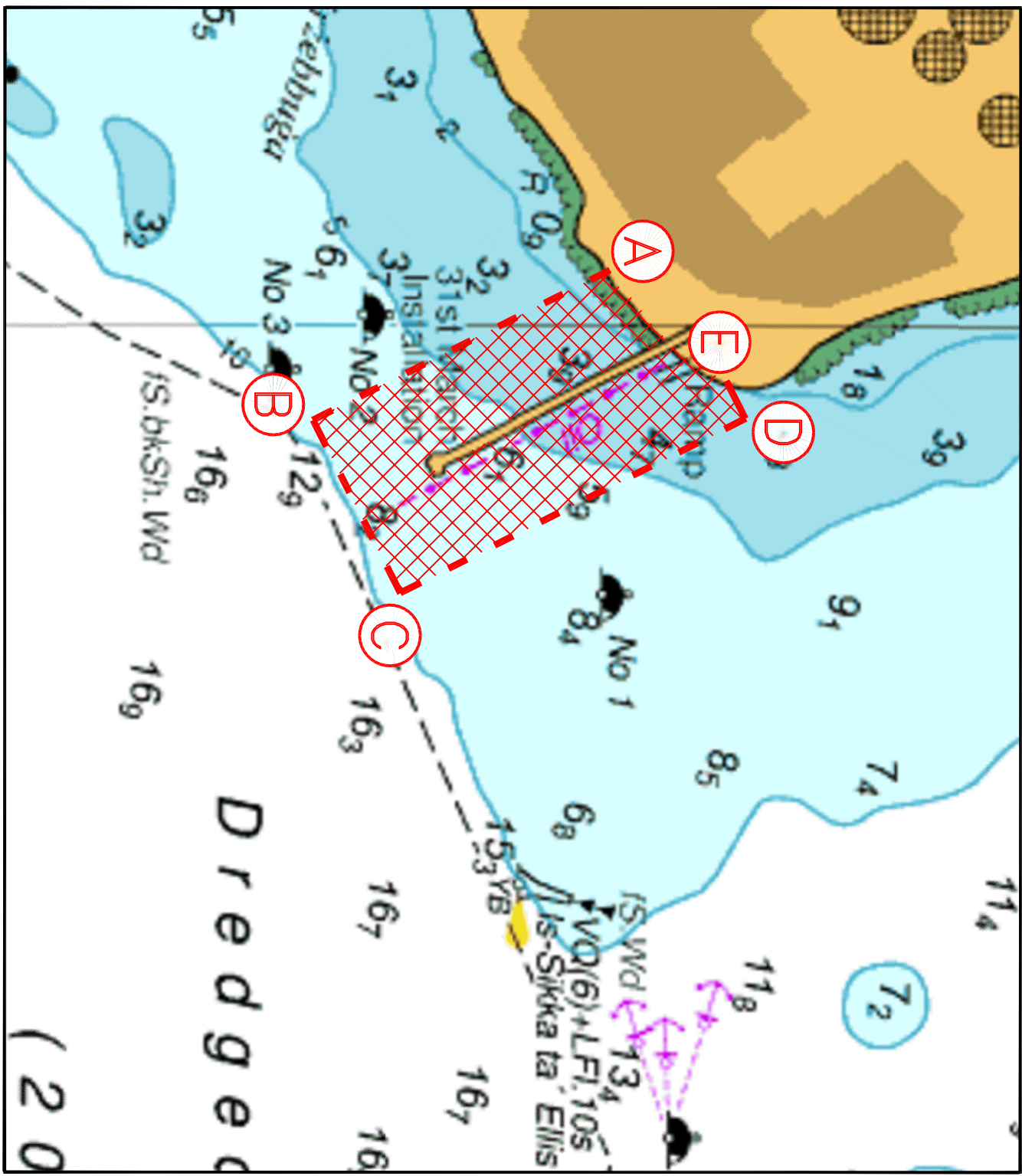
Any boats moored within the area shown on attached chart are to be removed during the above-mentioned dates.

The investigation will be carried out by scuba divers who will be accompanied by a support vessel which will be displaying the International Code of Signals flag "A". A safety distance of 50m from the support vessel is requested.

Masters and operators of vessels are advised to keep a sharp lookout, navigate with caution and at slow speed (no wake) and give the indicated areas a wide berth.

They are to cooperate with the contractor on site and comply with any instructions issued on VHF channel 14 / 16 by Marsaxlokk VTS and any enforcement agency on site.

Charts affected: **BA 36**



© British Crown Copyright 1970, 1983, 1986, 1988, 1999, 2000
 All rights reserved.

The UK Hydrographic Office makes the accompanying data
 Available to Malta Maritime Authority (Transport Malta)
 Under the terms and conditions of agreement HO 1427/020930/01.

DISCLAIMER

Whilst the UK Hydrographic Office has endeavoured to ensure
 That the material supplied is suitable for the purpose described,
 It accepts no liability (to the maximum extent permitted by law)
 For any damage or loss of any nature arising from its use.
 The material supplied is used entirely at the Recipient's own risk.