



PORTS AND YACHTING DIRECTORATE

## LOCAL NOTICE TO MARINERS N° 003 of 2024

Our Ref: **TM/PYD/63/95**

04 January 2024



**Transport Malta**

Malta Transport Centre,  
Triq Pantar, Hal Lija, LJA 2021  
Malta

Tel: (356) 2122 2203  
Fax: (356) 2125 0365  
Email: [info.tm@transport.gov.mt](mailto:info.tm@transport.gov.mt)

[www.transport.gov.mt](http://www.transport.gov.mt)

### Diving survey (Benthic) within Il-Bajja ta' Marsaxlokk – January 2024

The Ports and Yachting Directorate, Transport Malta, notifies mariners and owners of vessels that a diving (Benthic) survey will be held within Il-Bajja ta' Marsaxlokk.

The diving survey which will be held on any day between Tuesday 9<sup>th</sup> January 2024 and Wednesday 31<sup>st</sup> January 2024, within the area formed by joining the points A, B, C and D, as shown on the attached chart.

Position	Latitude (N)	Longitude (E)
A	35° 50'.066	014° 32'.750
B	35° 50'.083	014° 32'.750
C	35° 50'.083	014° 32'.767
D	35° 50'.066	014° 32'.767

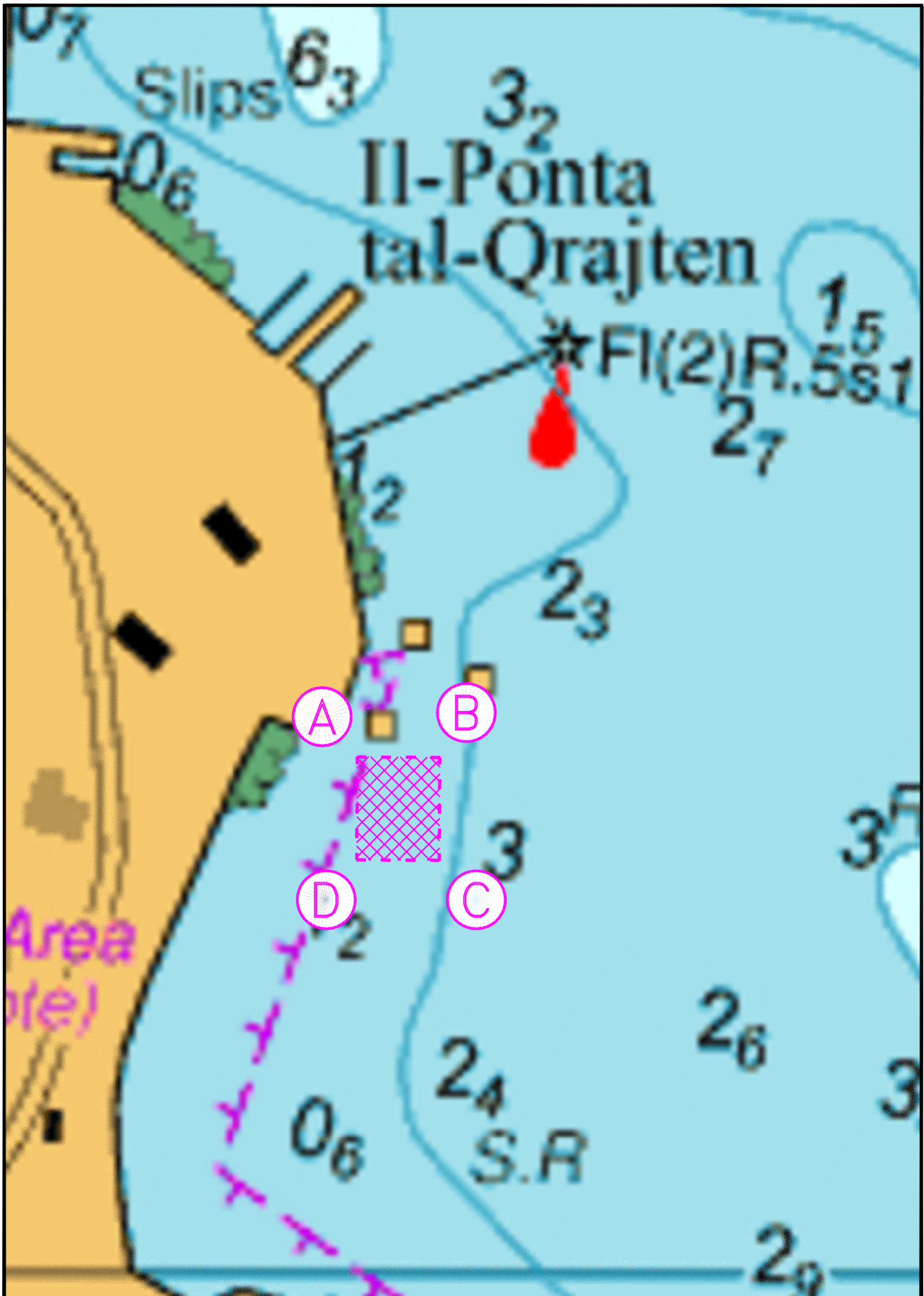
During the diving survey the scuba divers will be accompanied by a support vessel which will be displaying the International Code of Signals flag "A".

A safety zone of 50m round the survey area is to be kept during the survey.

Masters and operators of vessels are advised to keep a sharp lookout, proceed with caution and at slow speed when navigating in the vicinity of the above indicated area.

They are to comply with instructions given on VHF Channel 14 and/or 16 by Marsaxlokk VTS.

Chart affected: **BA 36**



© British Crown Copyright 1970, 1983, 1986, 1988, 1999, 2000  
 All rights reserved.

The UK Hydrographic Office makes the accompanying data  
 Available to Malta Maritime Authority (Transport Malta)  
 Under the terms and conditions of agreement HO 1427/020930/01.

DISCLAIMER

Whilst the UK Hydrographic Office has endeavoured to ensure  
 That the material supplied is suitable for the purpose described,  
 It accepts no liability (to the maximum extent permitted by law)  
 For any damage or loss of any nature arising from its use.  
 The material supplied is used entirely at the Recipient's own risk.