



PORTS AND YACHTING DIRECTORATE



Transport Malta

LOCAL NOTICE TO MARINERS N° 002 of 2024

Our Ref: **TM/PYD 0001/24**

3 January 2024

Malta Transport Centre,
Triq Pantar, Hal Lija, LJA 2021
Malta

Tel: (356) 2122 2203
Fax: (356) 2125 0365
Email: info.tm@transport.gov.mt

www.transport.gov.mt

Restricted Areas round Malta due to danger of falling rocks - January 2024

The Ports and Yachting Directorate, Transport Malta, would like to bring to the attention of all mariners of the danger of falling rocks in sea caves, from sea arches and sea stacks and from cliff faces. This is due to the geological structure of the Maltese Islands and land erosion which is caused by the combined effects of sea waves, strong wind, and precipitation.

The following areas (shown on the attached charts) are restricted to both vessels and swimmers and should be avoided:

Il-Ponta ta' Dellimara - The area bounded by the imaginary line A to B and the intermediate coastline (as shown on attached chart 1).

	LATITUDE (N)	LONGITUDE (E)
A	35° 49'.430	014° 33'.381
B	35° 49'.165	014° 33'.539

Blue Grotto limits of Wied iz-Zurrieq - The area bounded by the imaginary line A to B and the intermediate coastline (as shown on attached chart 2).

A	35° 49'.272	014° 27'.415
B	35° 49'.307	014° 27'.455

Il-Veccja – Il-Bajja ta' San Pawl - The area bounded by the imaginary line A to B and the intermediate coastline (as shown on attached chart 3).

A	35° 56'.833	014° 23'.492
B	35° 56'.858	014° 23'.495

Qala tal-Ghazzelin – Il-Bajja ta' San Pawl - The area bounded by the imaginary line A to B and the intermediate coastline (as shown on attached chart 4).

A	35° 56'.967	014° 24'.121
B	35° 56'.964	014° 24'.129



Transport Malta

Il-Ponta taz-Zonqor – Il-Bajja ta' Marsascala - The area bounded by the imaginary line A to B to C and the intermediate coastline (as shown on attached chart 5).

A	35° 52'.001	014° 34'.291
B	35° 52'.004	014° 34'.334
C	35° 52'.017	014° 34'.368

Dawret ix-Xatt – Xghajra - The area bounded by the imaginary line A to B to C and the intermediate coastline (as shown on attached chart 6).

A	35° 53'.129	014° 33'.148
B	35° 53'.121	014° 33'.152
C	35° 53'.113	014° 33'.158

Il-Munxar, Marsascala - The area bounded by the imaginary line A to B and the intermediate coastline (as shown on attached chart 7).

A	35° 50'.970	014° 34'.300
B	35° 50'.677	014° 34'.067

Il-Bajja tal-Gnejna - The area bounded by the imaginary line A to B and the intermediate coastline (as shown on attached chart 8).

A	35° 55'.325	014° 20'.643
B	35° 55'.310	014° 20'.644

Tigne - The area bounded by the imaginary line A to B and the intermediate coastline (as shown on attached chart 9).

A	35° 54'.507	014° 30'.720
B	35° 54'.493	014° 30'.732

Xrobb l-Ghagin Il-Hoffriet - The area bounded by the imaginary line A to B to C and the intermediate coastline and the imaginary line D to E to F and the intermediate coastline (as shown on attached chart 10).

A	35° 50'.313	014° 33'.722
B	35° 50'.267	014° 33'.766
C	35° 50'.248	014° 33'.831
D	35° 50'.344	014° 33'.761
E	35° 50'.323	014° 33'.824
F	35° 50'.298	014° 33'.843



Transport Malta

Il-Bajja ta' San Tumas - The area bounded by the imaginary line A to B to C to D and the intermediate coastline (as shown on attached chart 11).

A	35° 51'.320	014° 34'.041
B	35° 51'.340	014° 34'.113
C	35° 51'.420	014° 34'.142
D	35° 51'.426	014° 34'.231

Il-Ghar Ghana - Kemmuna - The area bounded by the imaginary line A to B and the intermediate coastline (as shown on attached chart 12).

A	36° 01'.106	014° 19'.469
B	36° 01'.100	014° 19'.495

L-Imgiebah – Il-Bajja tal-Mellieha - The area bounded by the imaginary line A to B and the intermediate coastline (as shown on attached chart 13).

A	35° 58'.132	014° 22'.841
B	35° 58'.089	014° 22'.889

Ghar Lapsi - The area bounded by the imaginary line A to B to C to D and the intermediate coastline (as shown on attached chart 14).

A	35° 49'.639	014° 25'.464
B	35° 49'.640	014° 25'.497
C	35° 49'.615	014° 25'.523
D	35° 49'.614	014° 25'.528

Golf l-Abjad – Haz-Zabbar - The area bounded by the imaginary line A to B and the intermediate coastline (as shown on attached chart 15).

A	35° 52'.891	014° 33'.450
B	35° 52'.888	014° 33'.503

Qarraba Bay - The area bounded by the imaginary line A to B to C and the intermediate coastline (as shown on attached chart 16).

A	35° 55'.586	014° 20'.509
B	35° 55'.601	014° 20'.570
C	35° 55'.582	014° 20'.609



Transport Malta

Fort Ricasoli - The area bounded by the imaginary line A to B and the intermediate coastline (as shown on attached chart 17).

A	35° 53'.887	014° 31'.617
B	35° 53'.861	014° 31'.688

Dahla ta' Rinella - The area bounded by the imaginary line A to B and the intermediate coastline (as shown on attached chart 18).

A	35° 53'.697	014° 31'.610
B	35° 53'.666	014° 31'.621

Rdum il Bies - Il-Bajja ta' San Pawl - An area of 50m radius centred on the following approximate position (as shown on attached chart 19).

A	35° 57'.708	014° 23'.766
---	-------------	--------------

Fort Ricasoli Bastion - An area of 50m radius centred on the following approximate position (as shown on attached chart 20).

A	35° 53'.885	014° 31'.422
---	-------------	--------------

Under Ex-Bighi Hospital in Id-Daħla ta' Rinella - The area bounded by the imaginary line A to B to C and the intermediate coastline (as shown on attached chart 21).

A	35° 53'.645	014° 31'.504
B	35° 53'.652	014° 31'.517
C	35° 53'.600	014° 31'.556

Between Il-Ponta ta' Aħrax and Daħlet ix-Xilep – Mellieħa - The area bounded by the imaginary line A to B to C and the intermediate coastline (as shown on attached chart 22).

A	35° 59'.601	014° 22'.323
B	35° 59'.418	014° 22'.522
C	35° 59'.405	014° 22'.506

Il-Hofra il-Kbira - The area bounded by the imaginary line A to B to C to D and the intermediate coastline (as shown on attached chart 23).

A	35° 50'.527	014° 33'.798
B	35° 50'.509	014° 33'.819
C	35° 50'.481	014° 33'.781
D	35° 50'.506	014° 33'.753



Transport Malta

Ir-Ramla ta' Għajn Tuffieħa - The area bounded by the imaginary line A to B to C to D and the intermediate coastline (as shown on attached chart 24).

A	35° 55'.845	014° 20'.576
B	35° 55'.832	014° 20'.558
C	35° 55'.807	014° 20'.586
D	35° 55'.802	014° 20'.617
E	35° 55'.819	014° 20'.621

Il-Hofra ż-Żgħira - - An area of 50m radius centred on the following approximate position (as shown on attached chart 25).

A	35° 50'.124	014° 33'.617
---	-------------	--------------

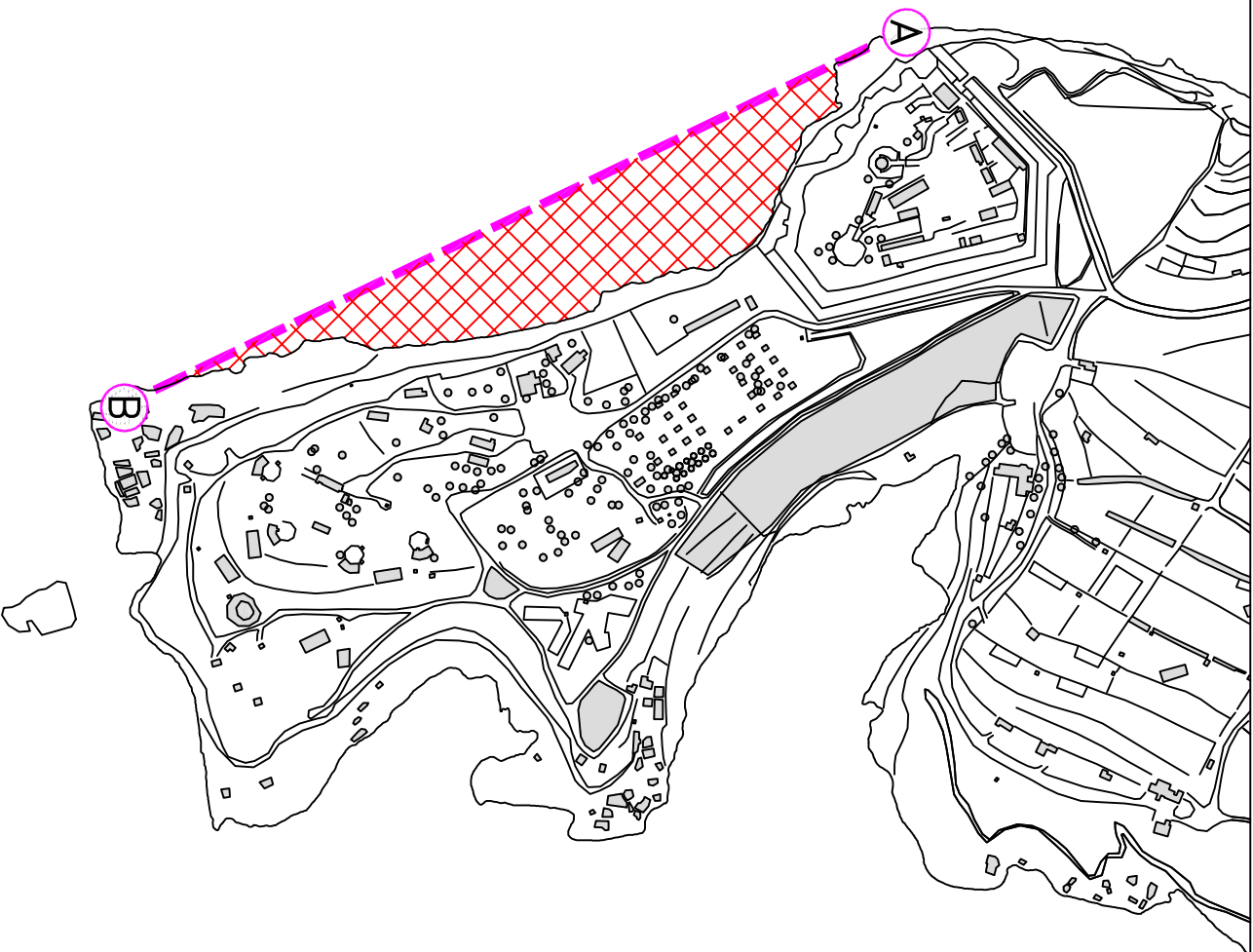
Mariners are informed that a rope supported by black and white buoys may be placed along all the imaginary lines mentioned above.

The Ports and Yachting Directorate, Transport Malta, notifies mariners and owners of vessels that the above list is not comprehensive as other coastal areas may be added at a later stage and because rocks and boulders may become dislodged at any time.

Mariners are to give special attention when entering any cave and shall keep at a safe distance from cliff faces all around the Maltese Islands.

This Local Notice to Mariners is to replace Local Notice to Mariners Nos 008, 025, 086, 093, 109 and 145 of 2023, which are hereby **CANCELLED**.

Charts affected: BA 36, 177, 194, 211A, 211B, 1537, 2538



© Transport Malta all rights reserved

DISCLAIMER

Whilst the Ports and Yachting Directorate, Transport Malta has endeavoured to ensure that the material supplied is suitable for the purpose described, it accepts no liability (to the maximum extent permitted by law) for any damage or loss of any nature arising from its use.
The material supplied is used entirely at the Recipient's own risk.

Chart 1

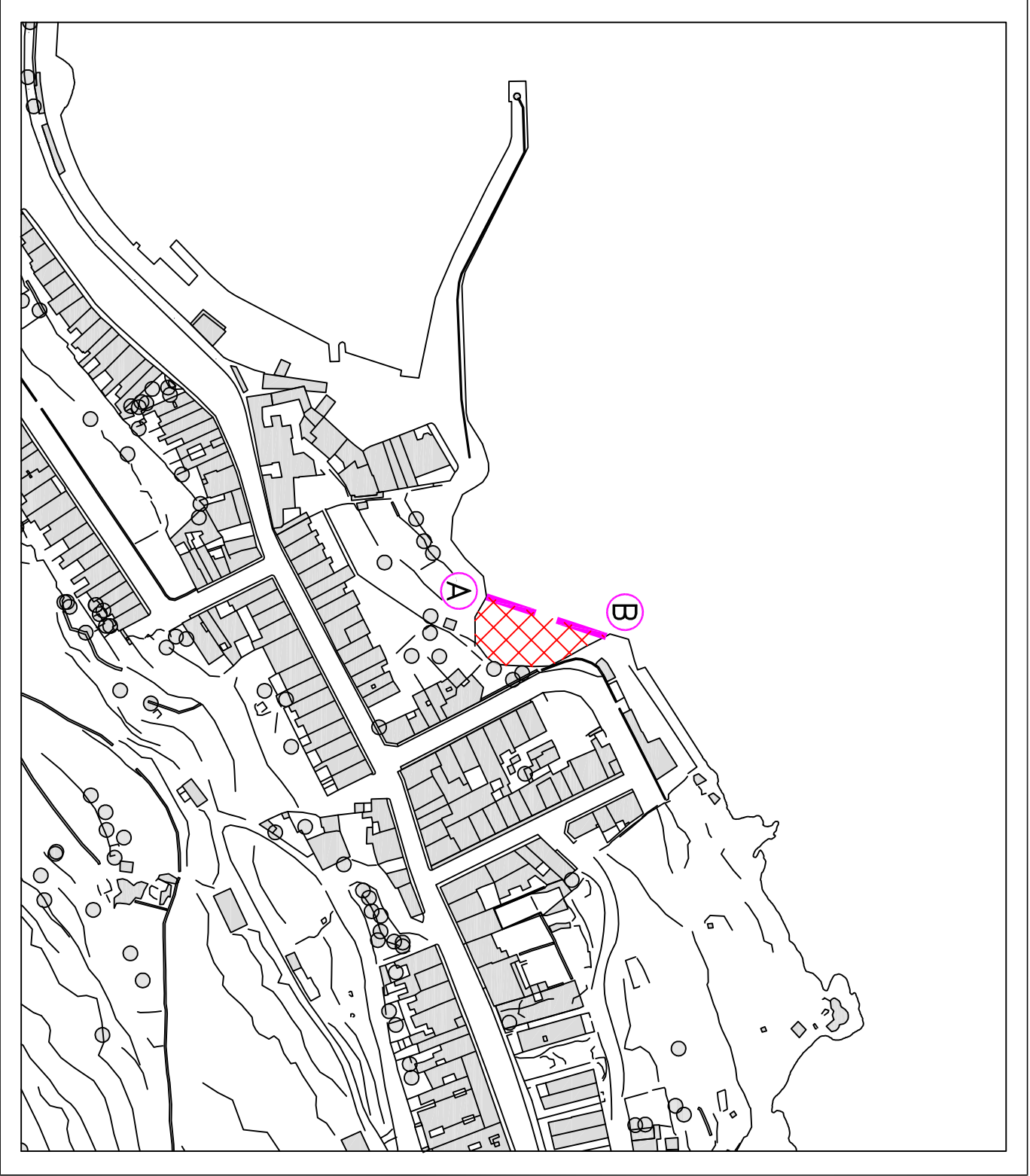


© Transport Malta all rights reserved

DISCLAIMER

Whilst the Ports and Yachting Directorate, Transport Malta has endeavoured to ensure that the material supplied is suitable for the purpose described, it accepts no liability (to the maximum extent permitted by law) for any damage or loss of any nature arising from its use.

The material supplied is used entirely at the Recipient's own risk.



© Transport Malta all rights reserved

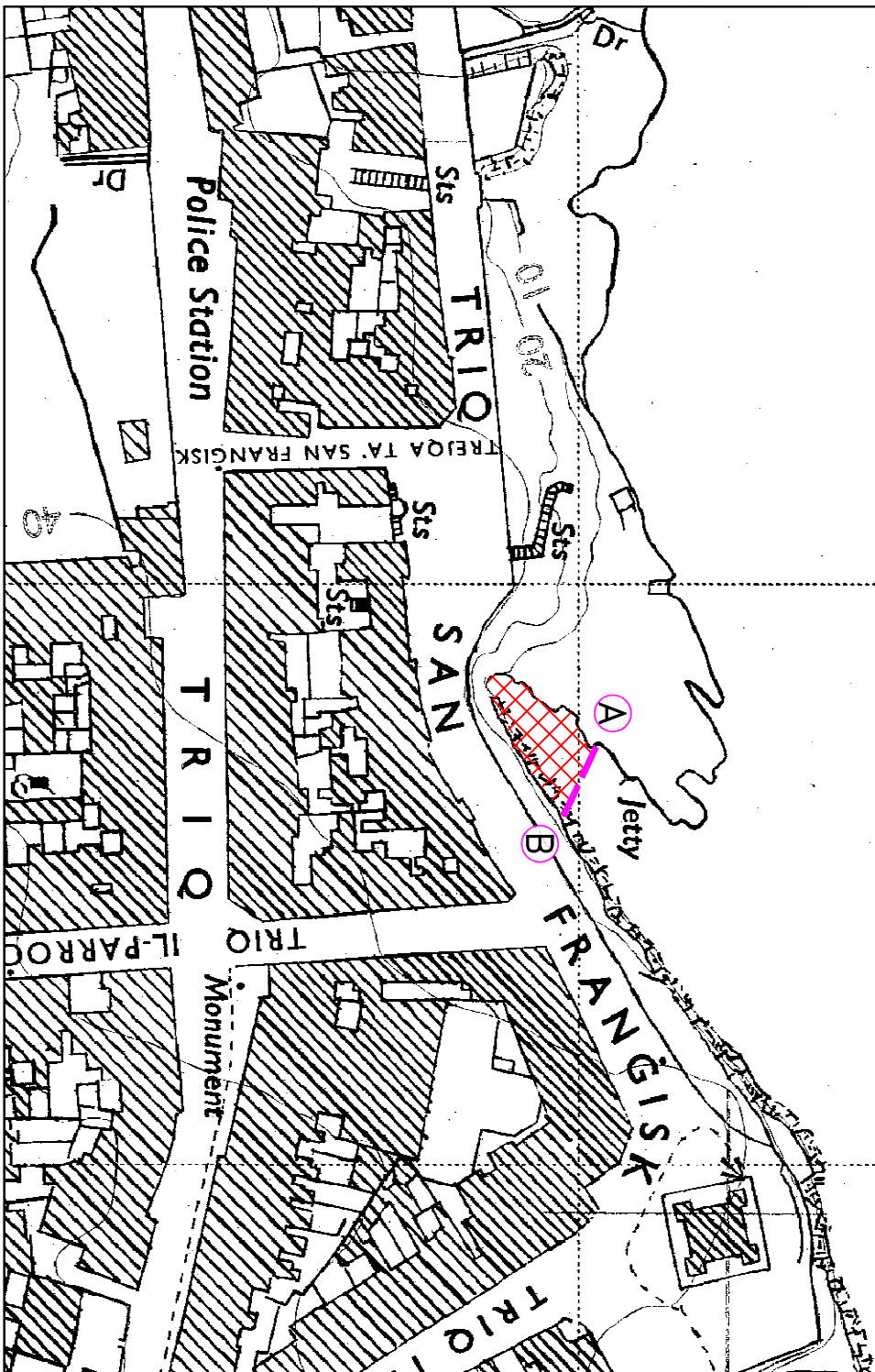
DISCLAIMER

Whilst the Ports and Yachting Directorate, Transport Malta has endeavoured to ensure that the material supplied is suitable for the purpose described, it accepts no liability (to the maximum extent permitted by law) for any damage or loss of any nature arising from its use.

The material supplied is used entirely at the Recipient's own risk.

Chart 3

Qala tal-Għażiżellin

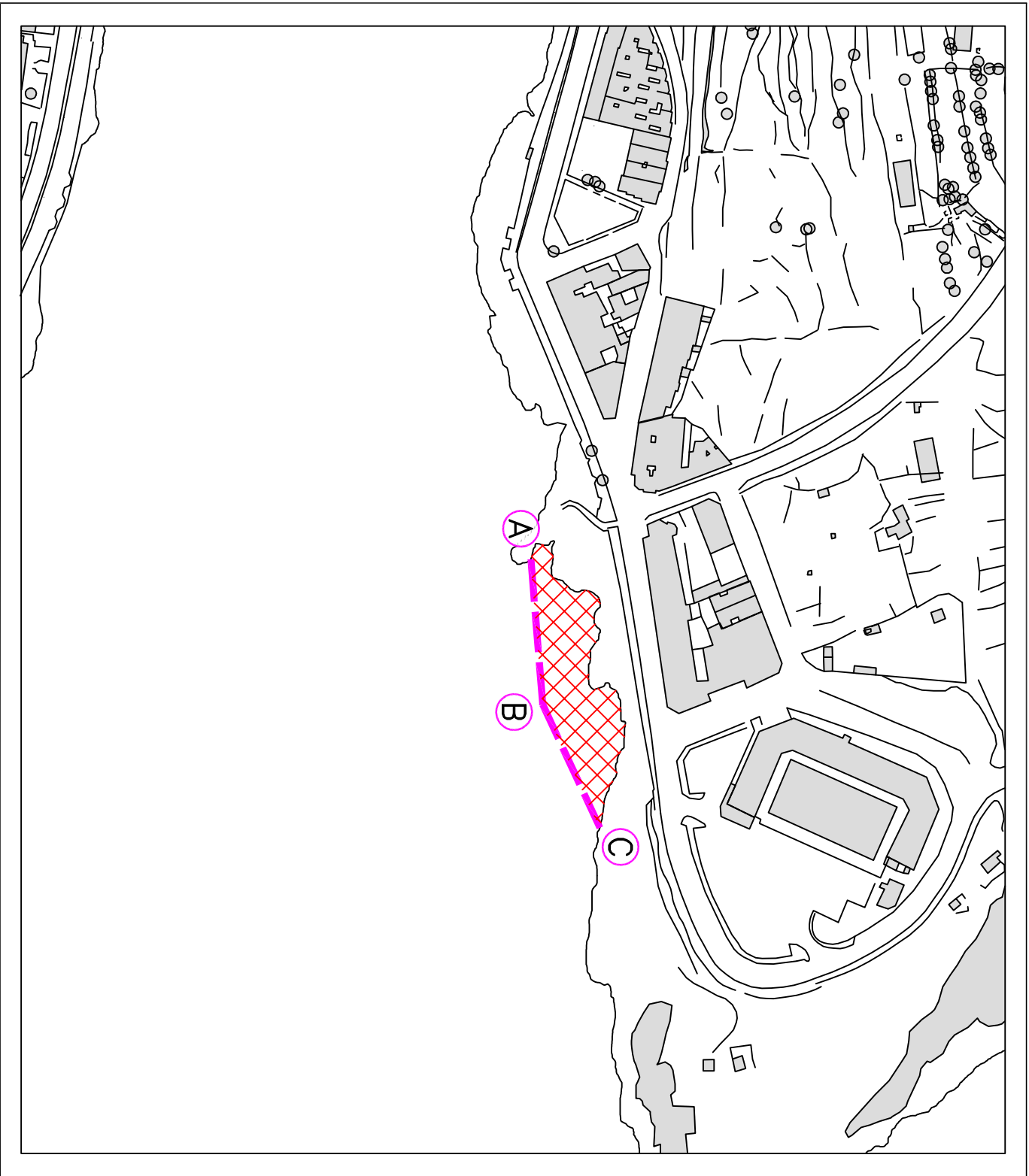


© Transport Malta all rights reserved

DISCLAIMER

Whilst the Ports and Yachting Directorate, Transport Malta has endeavoured to ensure that the material supplied is suitable for the purpose described, it accepts no liability (to the maximum extent permitted by law) for any damage or loss of any nature arising from its use.

The material supplied is used entirely at the Recipient's own risk.

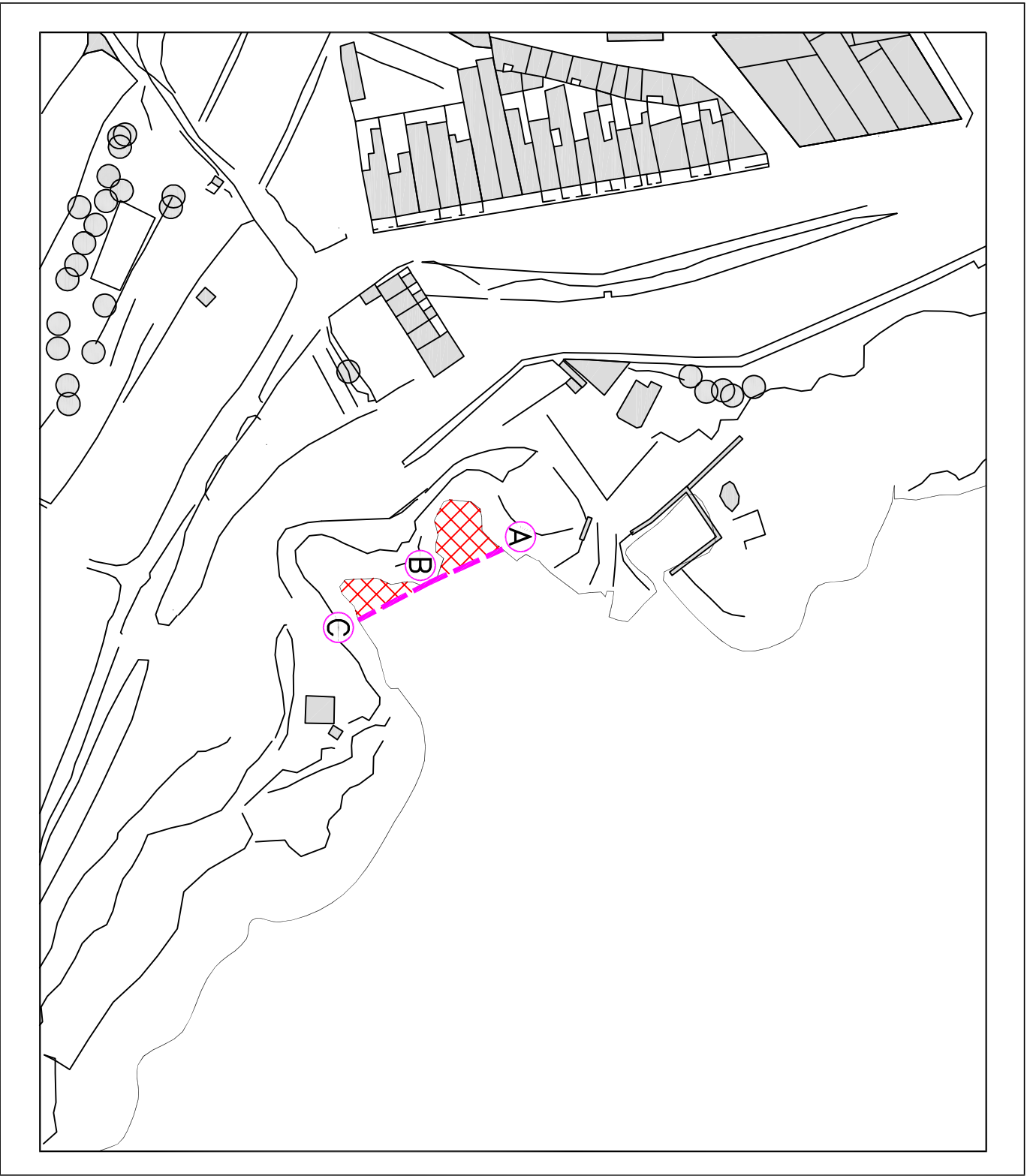


© Transport Malta all rights reserved

DISCLAIMER

Whilst the Ports and Yachting Directorate, Transport Malta has endeavoured to ensure that the material supplied is suitable for the purpose described, it accepts no liability (to the maximum extent permitted by law) for any damage or loss of any nature arising from its use.

The material supplied is used entirely at the Recipient's own risk.

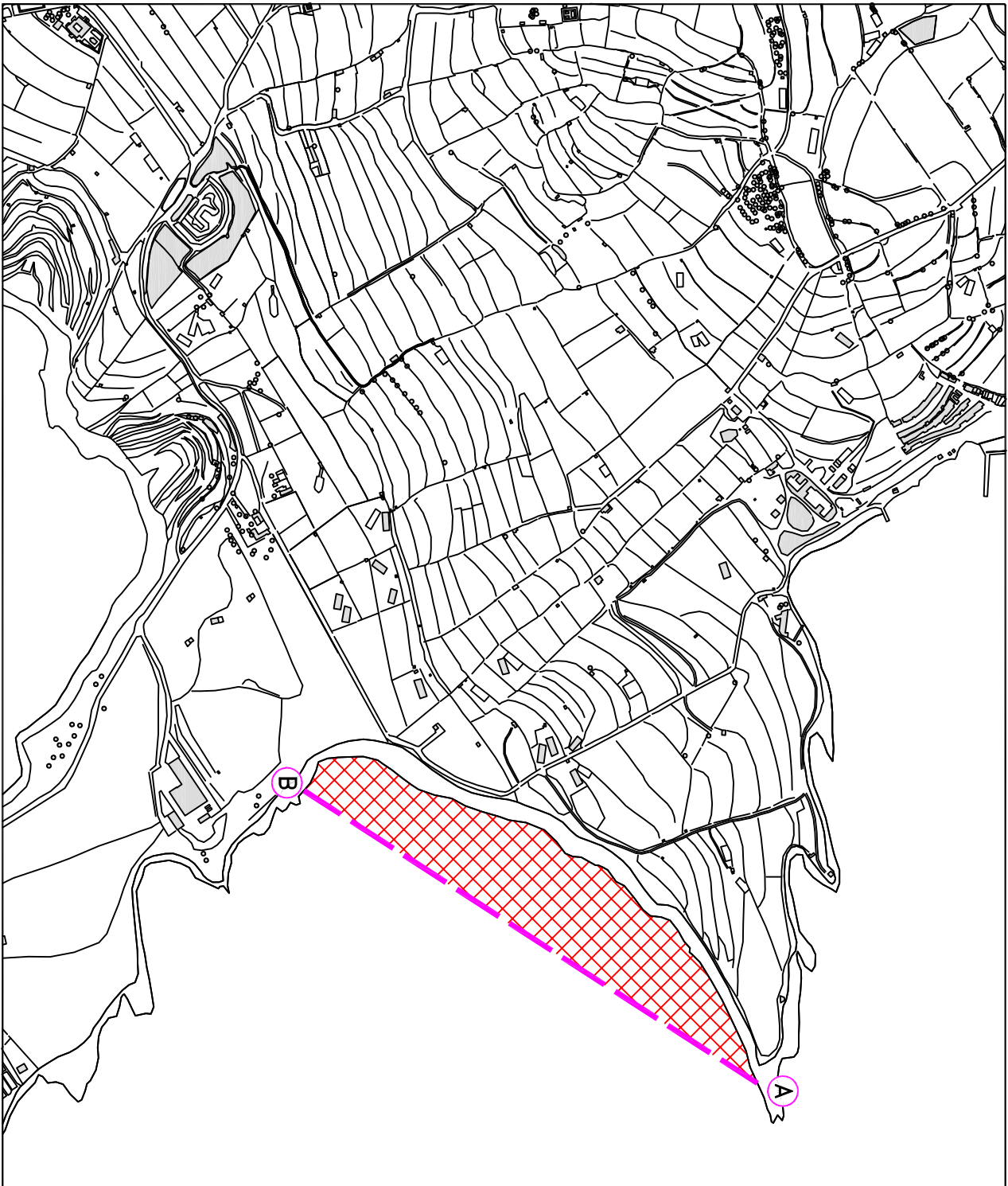


© Transport Malta all rights reserved

DISCLAIMER

Whilst the Ports and Yachting Directorate, Transport Malta has endeavoured to ensure that the material supplied is suitable for the purpose described, it accepts no liability (to the maximum extent permitted by law) for any damage or loss of any nature arising from its use.

The material supplied is used entirely at the Recipient's own risk.



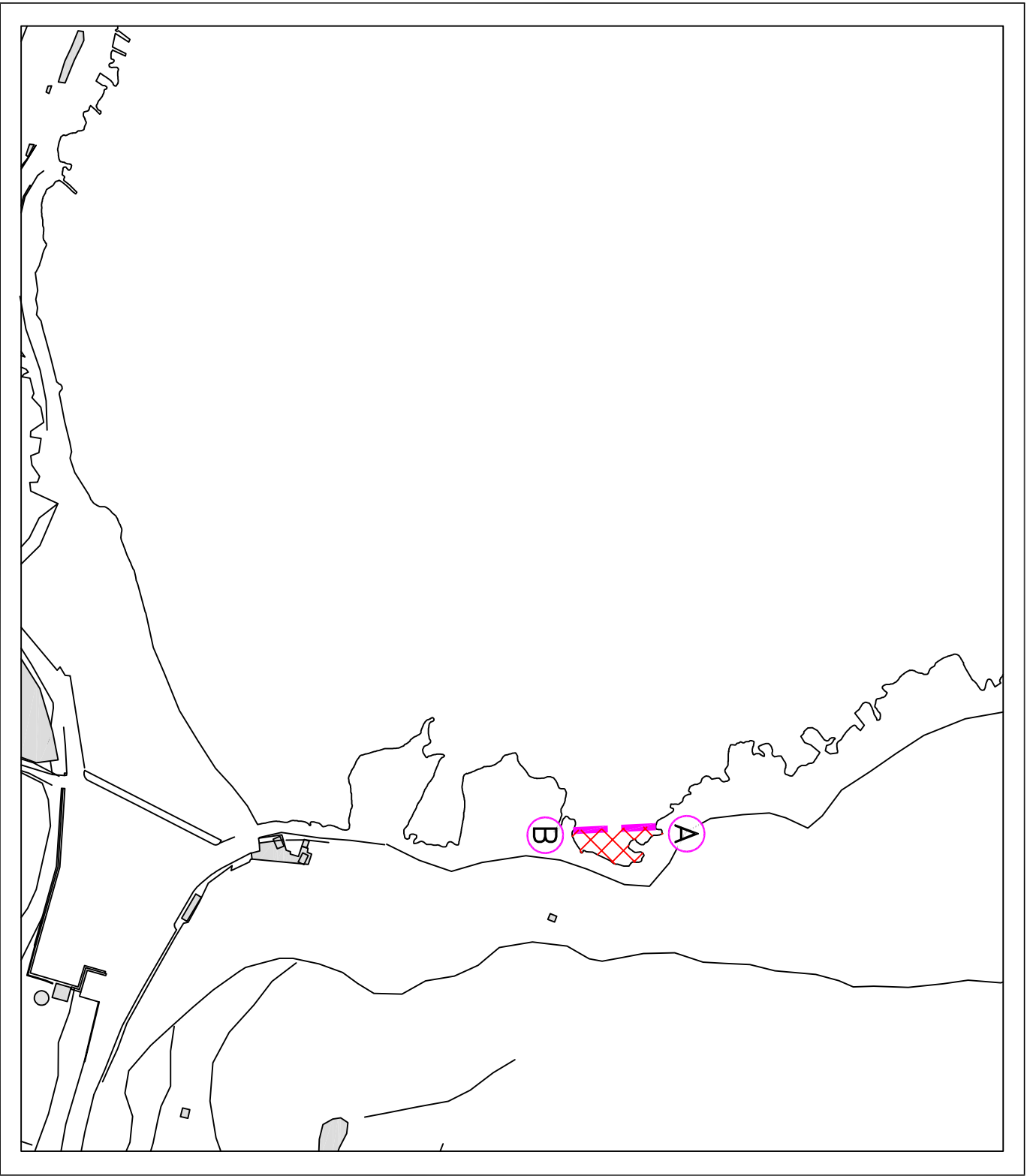
© Transport Malta all rights reserved

DISCLAIMER

Whilst the Ports and Yachting Directorate, Transport Malta has endeavoured to ensure that the material supplied is suitable for the purpose described, it accepts no liability (to the maximum extent permitted by law) for any damage or loss of any nature arising from its use.

The material supplied is used entirely at the Recipient's own risk.

Chart 7



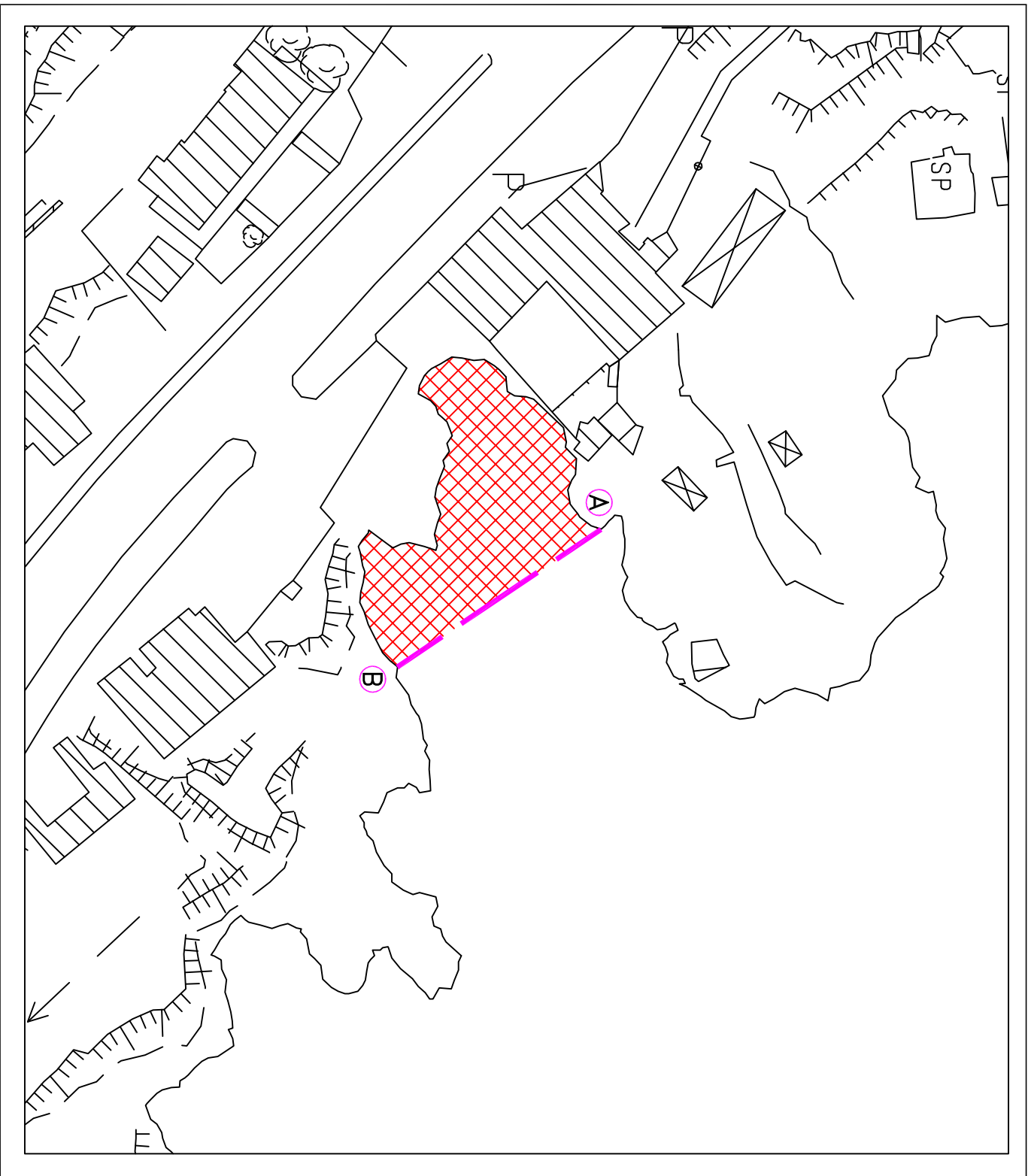
© Transport Malta all rights reserved

DISCLAIMER

Whilst the Ports and Yachting Directorate, Transport Malta has endeavoured to ensure that the material supplied is suitable for the purpose described, it accepts no liability (to the maximum extent permitted by law) for any damage or loss of any nature arising from its use.

The material supplied is used entirely at the Recipient's own risk.

Chart 8



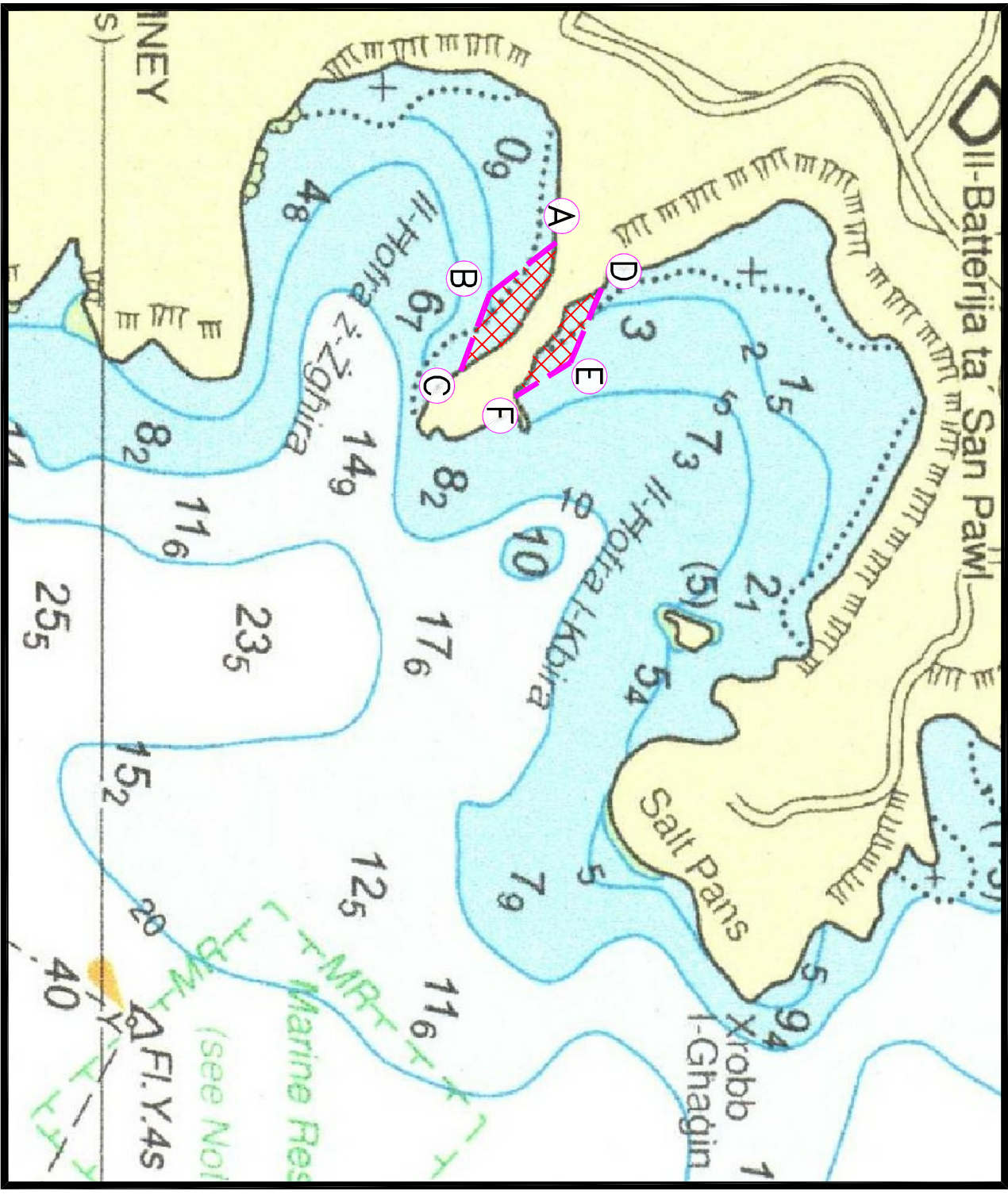
© Transport Malta all rights reserved

DISCLAIMER

Whilst the Ports and Yachting Directorate, Transport Malta has endeavoured to ensure that the material supplied is suitable for the purpose described, it accepts no liability (to the maximum extent permitted by law) for any damage or loss of any nature arising from its use.

The material supplied is used entirely at the Recipient's own risk.

Chart 9



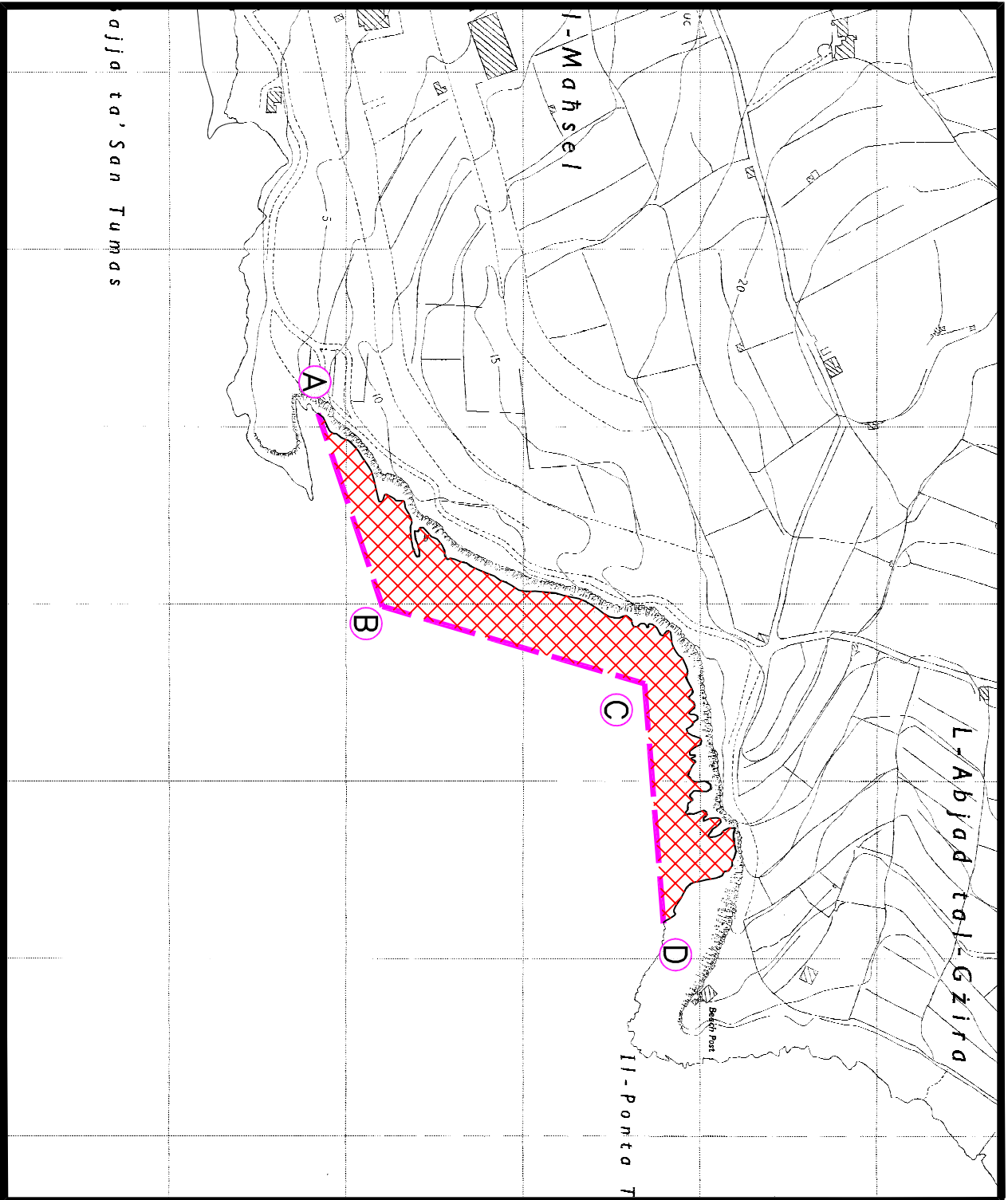
© British Crown Copyright 1970, 1983, 1986, 1988, 1999, 2000
 All rights reserved.

The UK Hydrographic Office makes the accompanying data
 Available to Malta Maritime Authority (Transport Malta)
 Under the terms and conditions of agreement HO 1427/020930/01.

DISCLAIMER

Whilst the UK Hydrographic Office has endeavoured to ensure
 that the material supplied is suitable for the purpose described,
 it accepts no liability (to the maximum extent permitted by law)
 for any damage or loss of any nature arising from its use.
 The material supplied is used entirely at the Recipient's own risk.

Chart 10



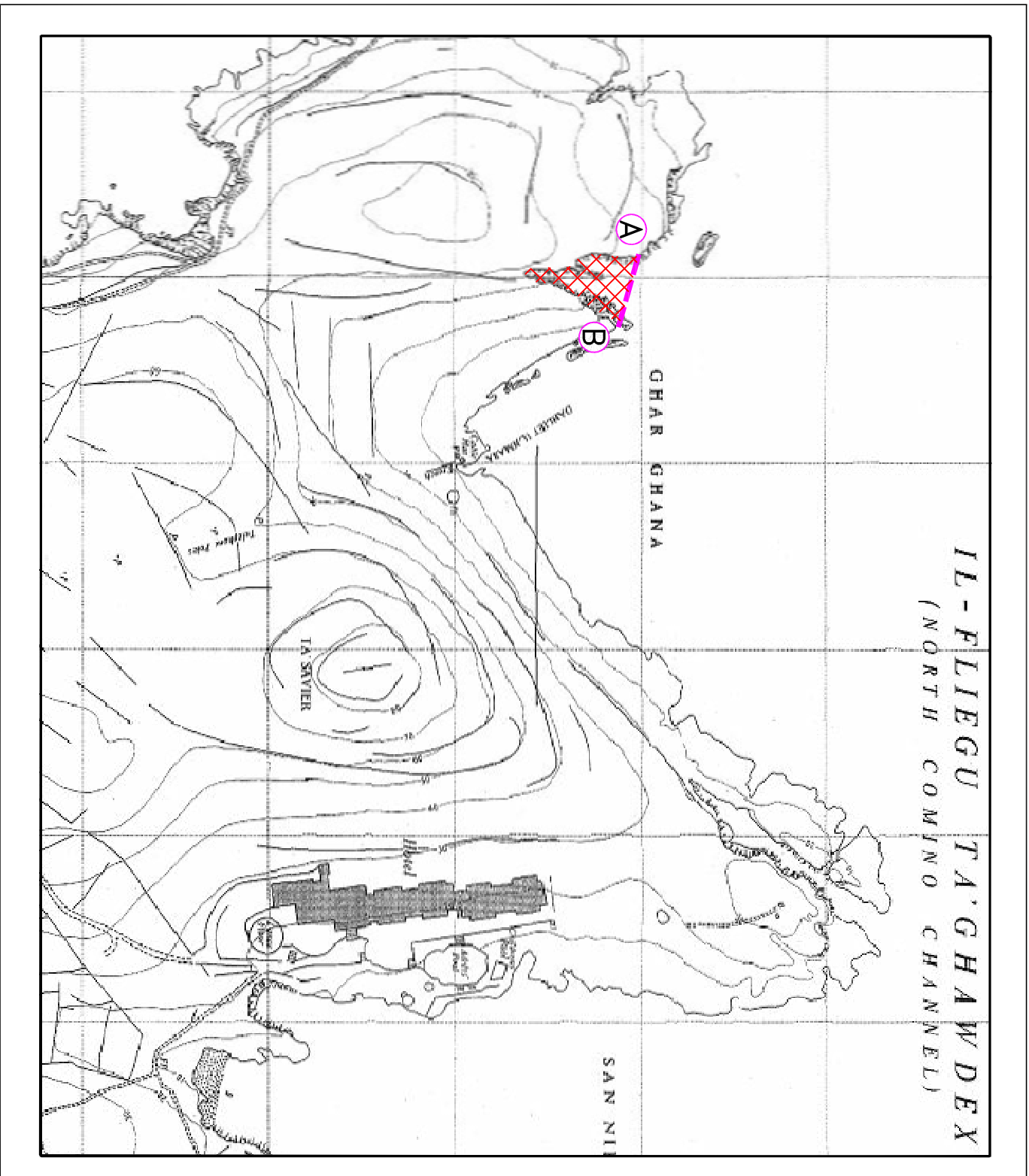
© Transport Malta all rights reserved

DISCLAIMER

Whilst the Ports and Yachting Directorate, Transport Malta has endeavoured to ensure that the material supplied is suitable for the purpose described, it accepts no liability (to the maximum extent permitted by law) for any damage or loss of any nature arising from its use.

The material supplied is used entirely at the Recipient's own risk.

Chart 11



© Transport Malta all rights reserved

DISCLAIMER

Whilst the Ports and Yachting Directorate, Transport Malta has endeavoured to ensure that the material supplied is suitable for the purpose described, it accepts no liability (to the maximum extent permitted by law) for any damage or loss of any nature arising from its use.

The material supplied is used entirely at the Recipient's own risk.

Chart 12

© Transport Malta all rights reserved

DISCLAIMER

Whilst the Ports and Yachting Directorate, Transport Malta has endeavoured to ensure that the material supplied is suitable for the purpose described, it accepts no liability (to the maximum extent permitted by law) for any damage or loss of any nature arising from its use.
The material supplied is used entirely at the Recipient's own risk.

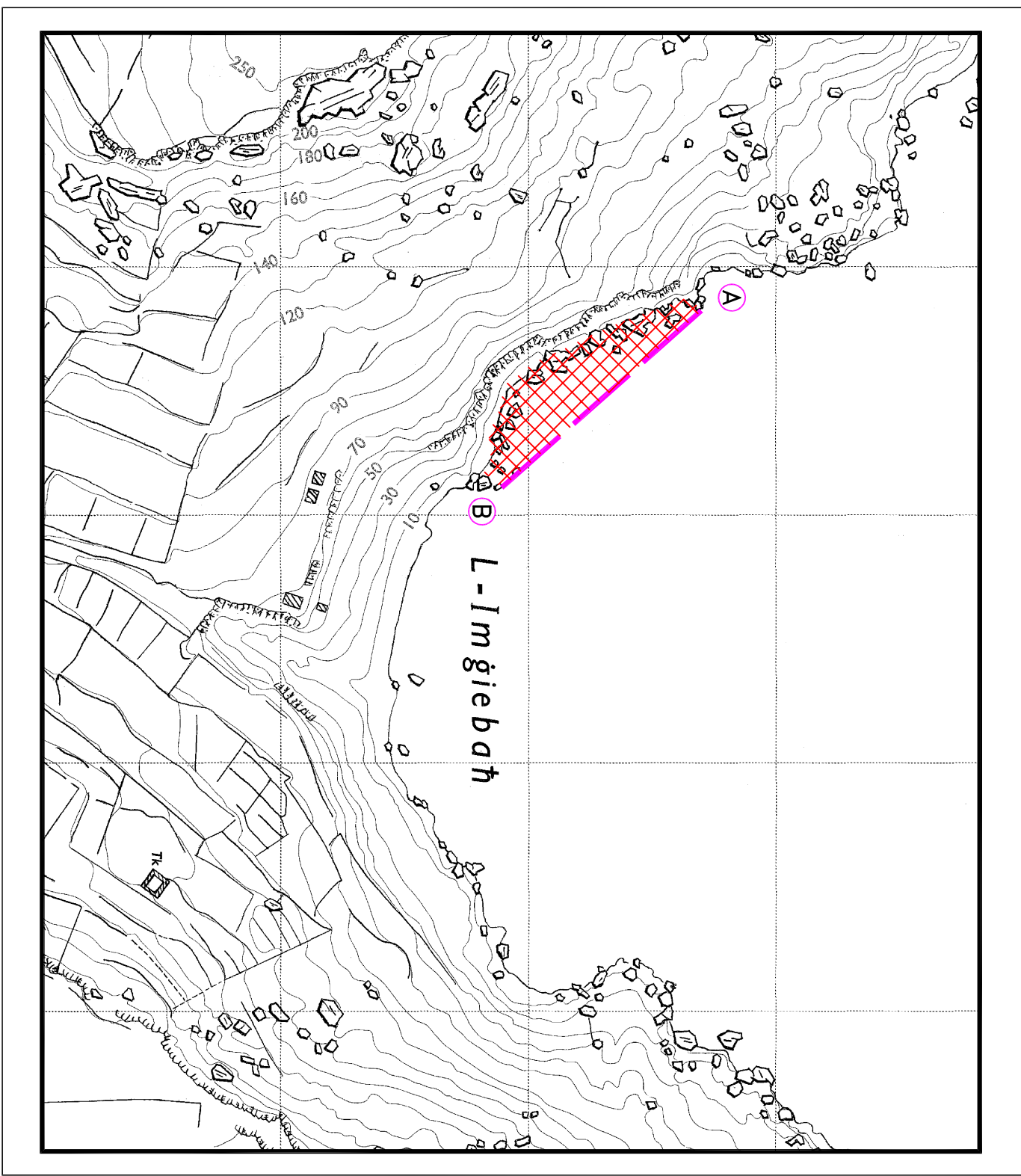
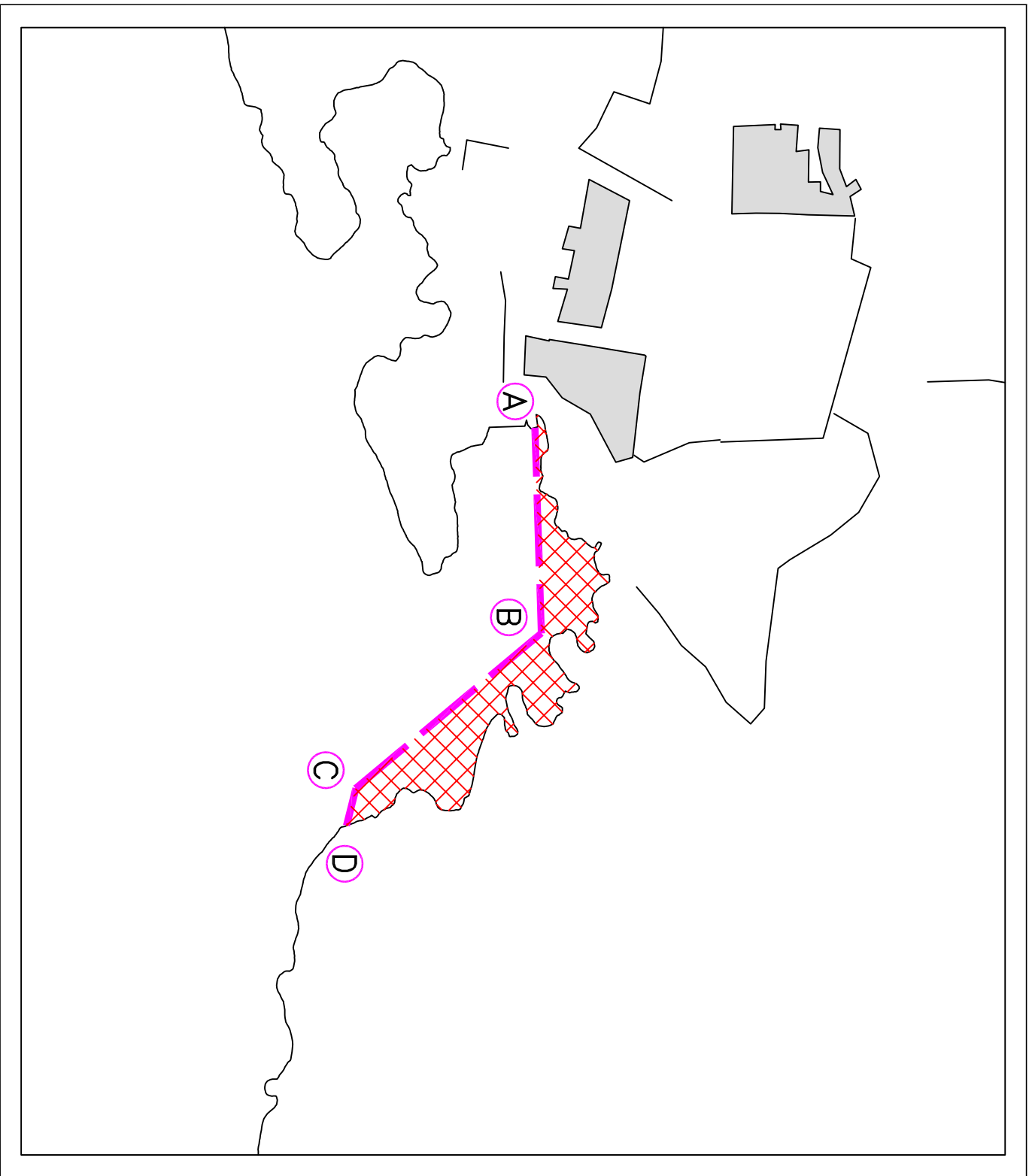


Chart 13

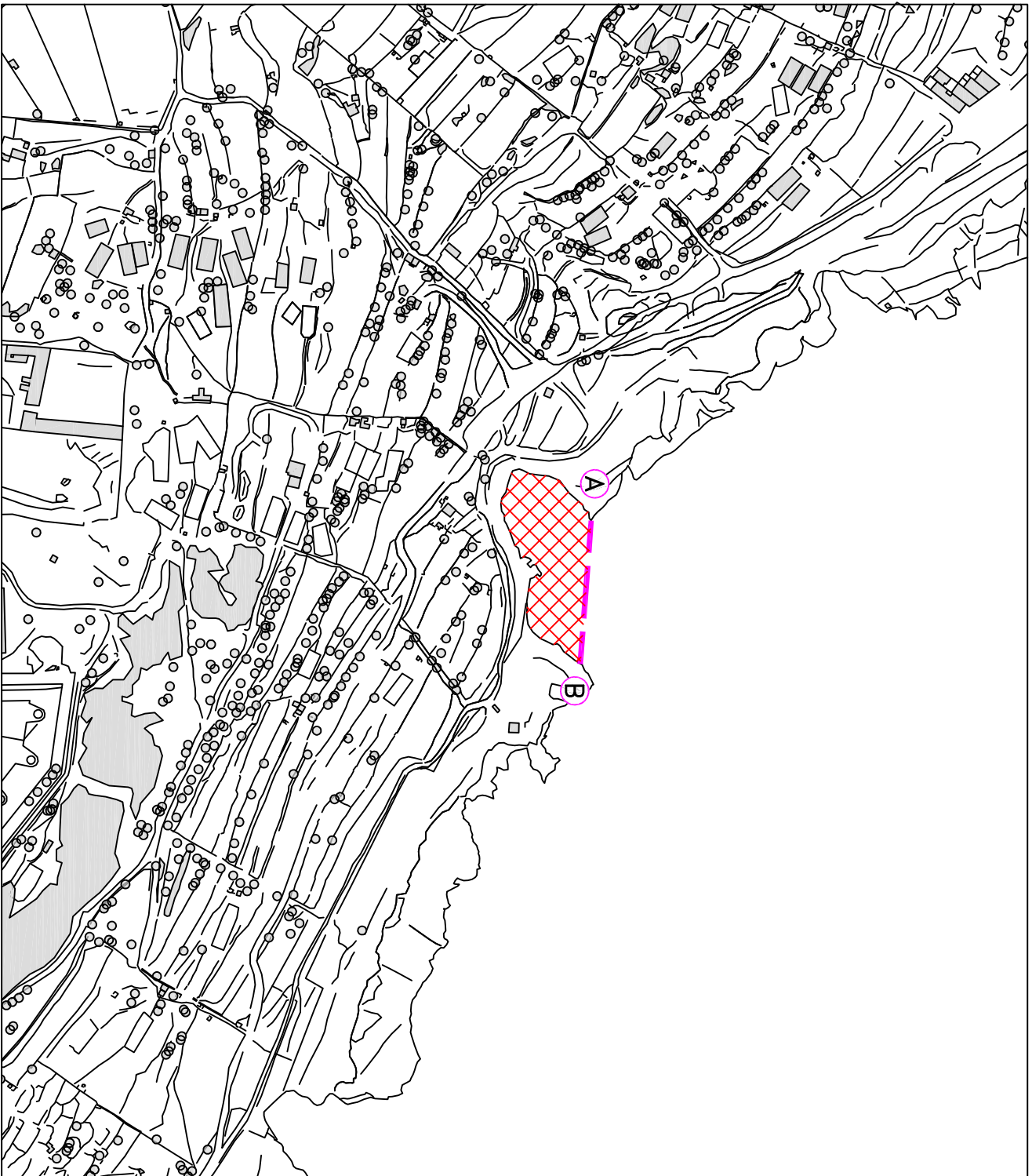


© Transport Malta all rights reserved

DISCLAIMER

Whilst the Ports and Yachting Directorate, Transport Malta has endeavoured to ensure that the material supplied is suitable for the purpose described, it accepts no liability (to the maximum extent permitted by law) for any damage or loss of any nature arising from its use.

The material supplied is used entirely at the Recipient's own risk.

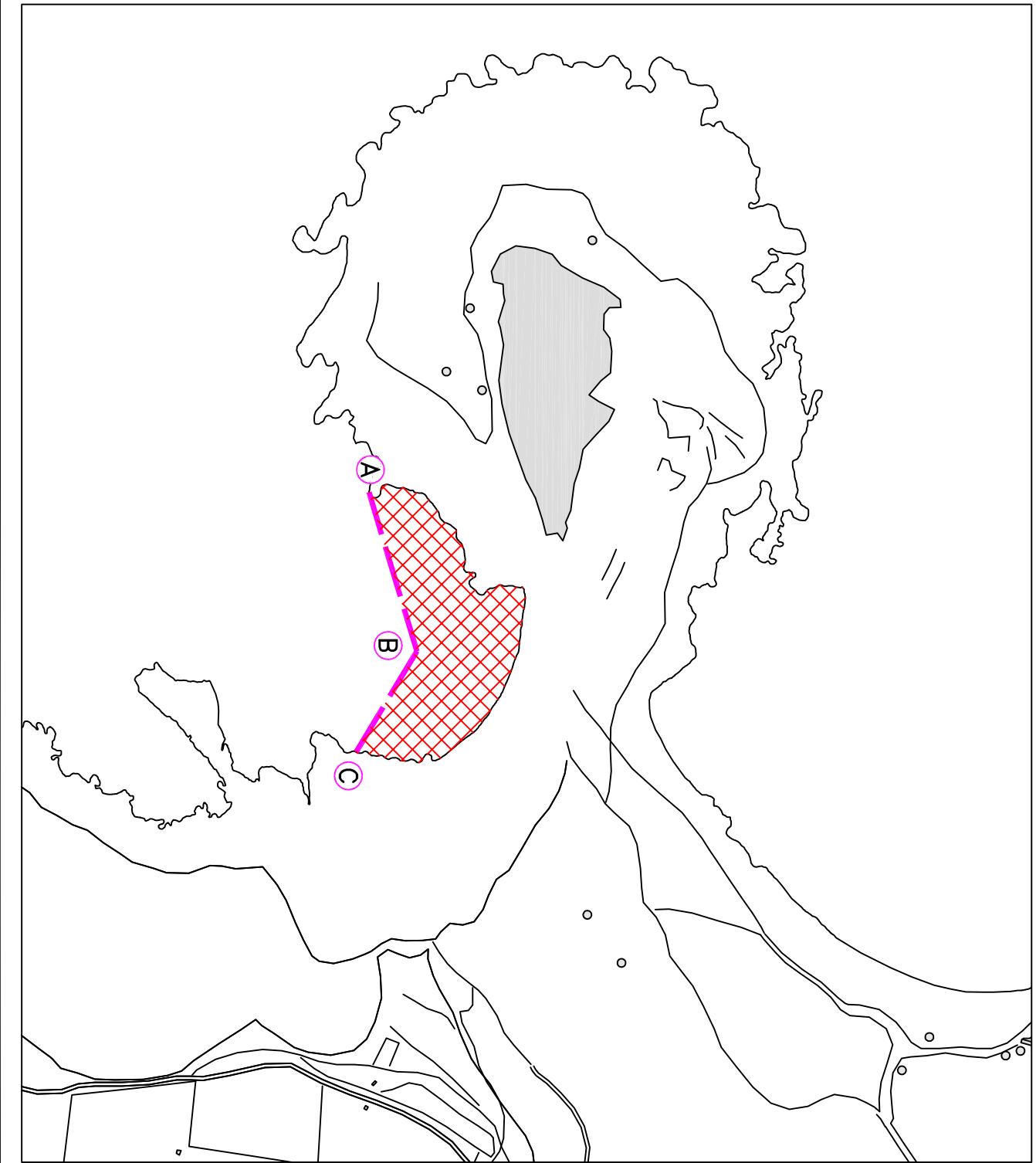


© Transport Malta all rights reserved

DISCLAIMER

Whilst the Ports and Yachting Directorate, Transport Malta has endeavoured to ensure that the material supplied is suitable for the purpose described, it accepts no liability (to the maximum extent permitted by law) for any damage or loss of any nature arising from its use.

The material supplied is used entirely at the Recipient's own risk.



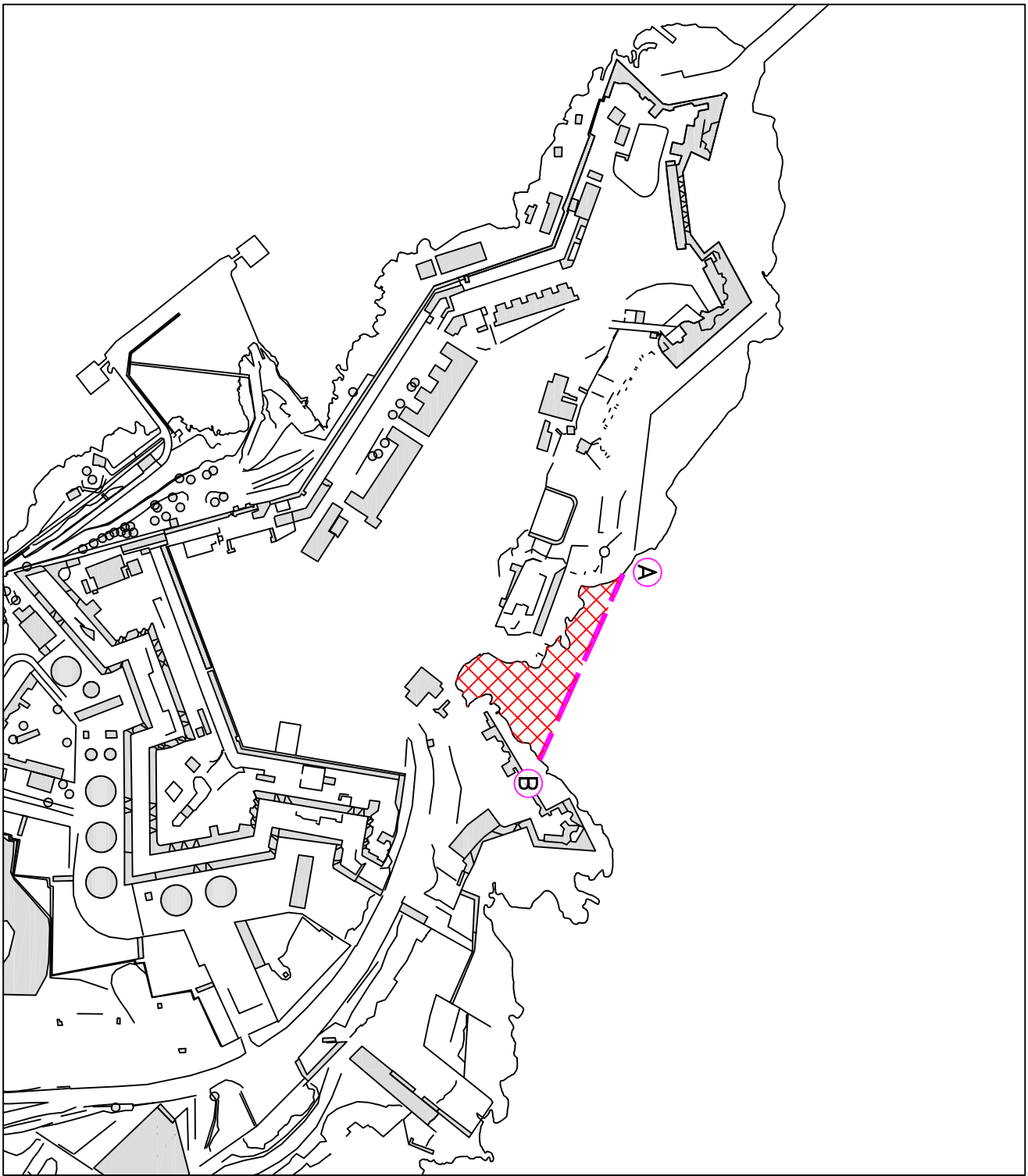
© Transport Malta all rights reserved

DISCLAIMER

Whilst the Ports and Yachting Directorate, Transport Malta has endeavoured to ensure that the material supplied is suitable for the purpose described, it accepts no liability (to the maximum extent permitted by law) for any damage or loss of any nature arising from its use.

The material supplied is used entirely at the Recipient's own risk.

Chart 16



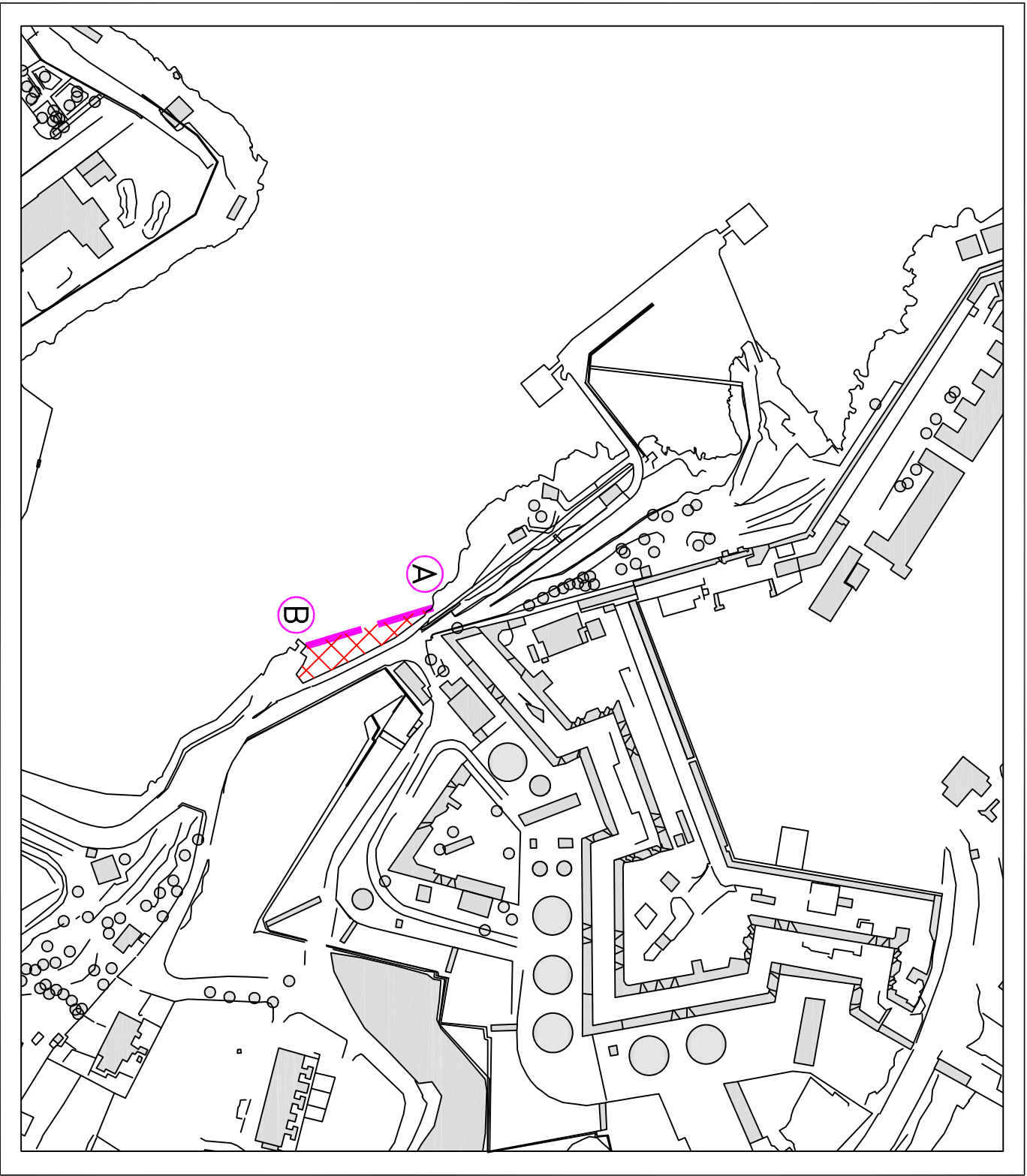
© Transport Malta all rights reserved

DISCLAIMER

Whilst the Ports and Yachting Directorate, Transport Malta has endeavoured to ensure that the material supplied is suitable for the purpose described, it accepts no liability (to the maximum extent permitted by law) for any damage or loss of any nature arising from its use.

The material supplied is used entirely at the Recipient's own risk.

Chart 17

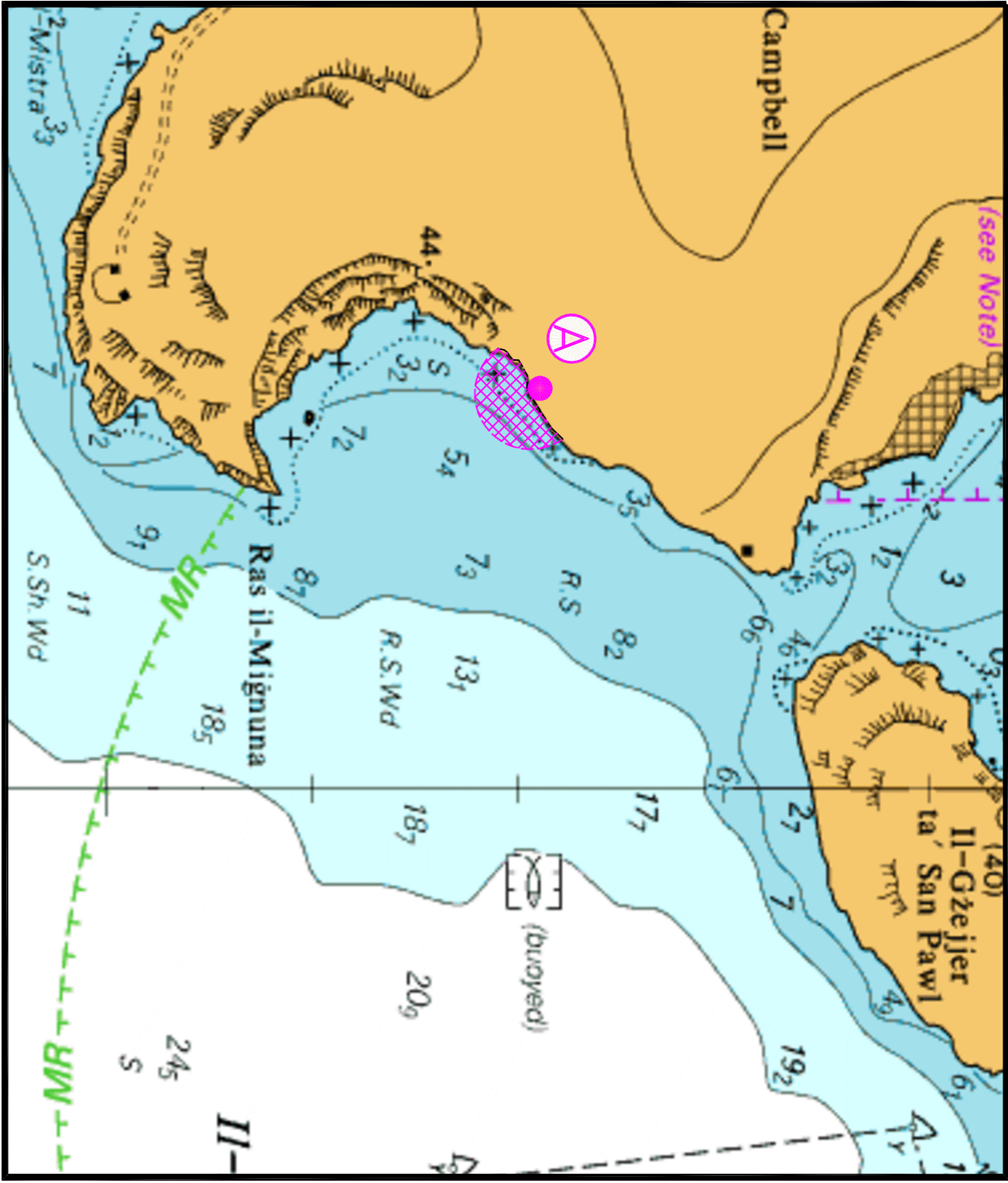


© Transport Malta all rights reserved

DISCLAIMER

Whilst the Ports and Yachting Directorate, Transport Malta has endeavoured to ensure that the material supplied is suitable for the purpose described, it accepts no liability (to the maximum extent permitted by law) for any damage or loss of any nature arising from its use.

The material supplied is used entirely at the Recipient's own risk.



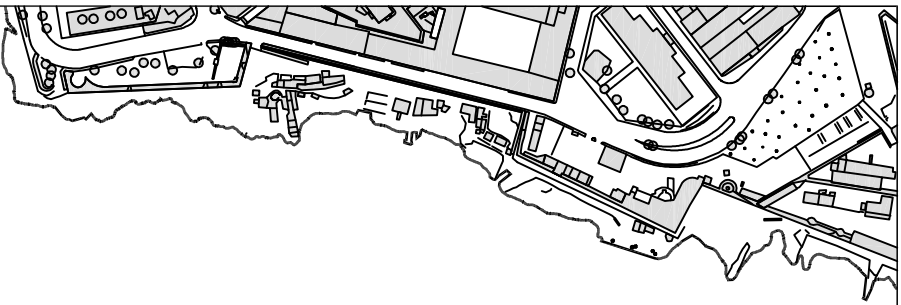
© British Crown Copyright 1970, 1983, 1986, 1988, 1999, 2000
 All rights reserved.

The UK Hydrographic Office makes the accompanying data
 Available to Malta Maritime Authority (Transport Malta)
 Under the terms and conditions of agreement HO 1427/020930/01.

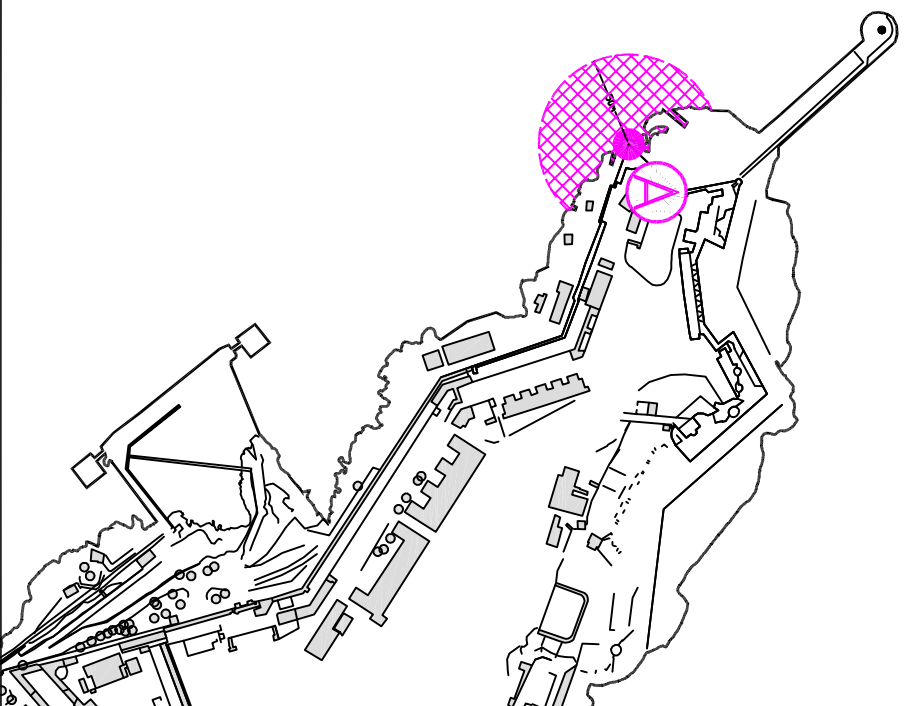
DISCLAIMER

Whilst the UK Hydrographic Office has endeavoured to ensure
 That the material supplied is suitable for the purpose described,
 it accepts no liability (to the maximum extent permitted by law)
 For any damage or loss of any nature arising from its use.
 The material supplied is used entirely at the Recipient's own risk.

Chart 19



Il-Port il-Kbir

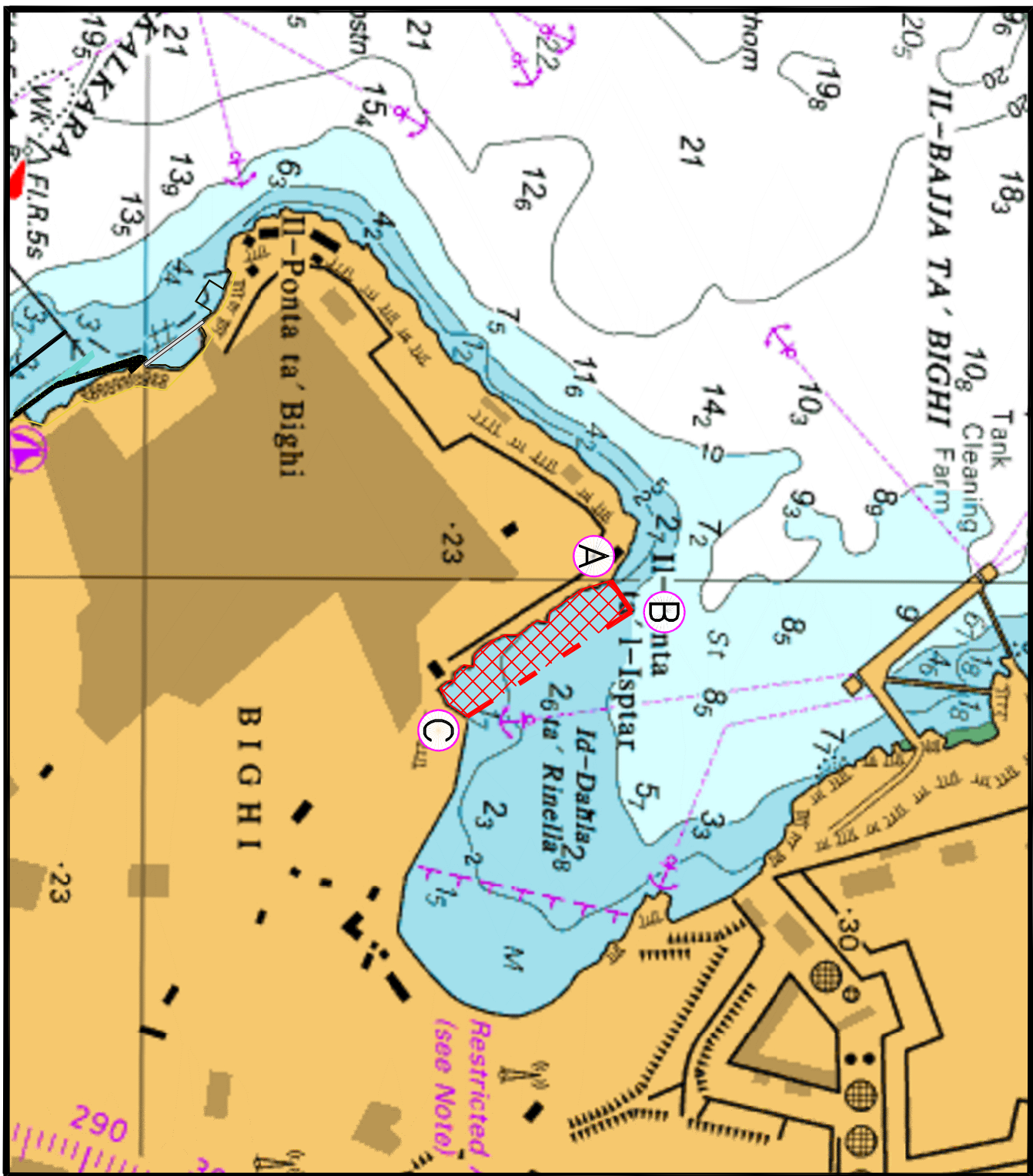


© Transport Malta all rights reserved

DISCLAIMER

Whilst the Ports and Yachting Directorate, Transport Malta has endeavoured to ensure that the material supplied is suitable for the purpose described, it accepts no liability (to the maximum extent permitted by law) for any damage or loss of any nature arising from its use.

The material supplied is used entirely at the Recipient's own risk.



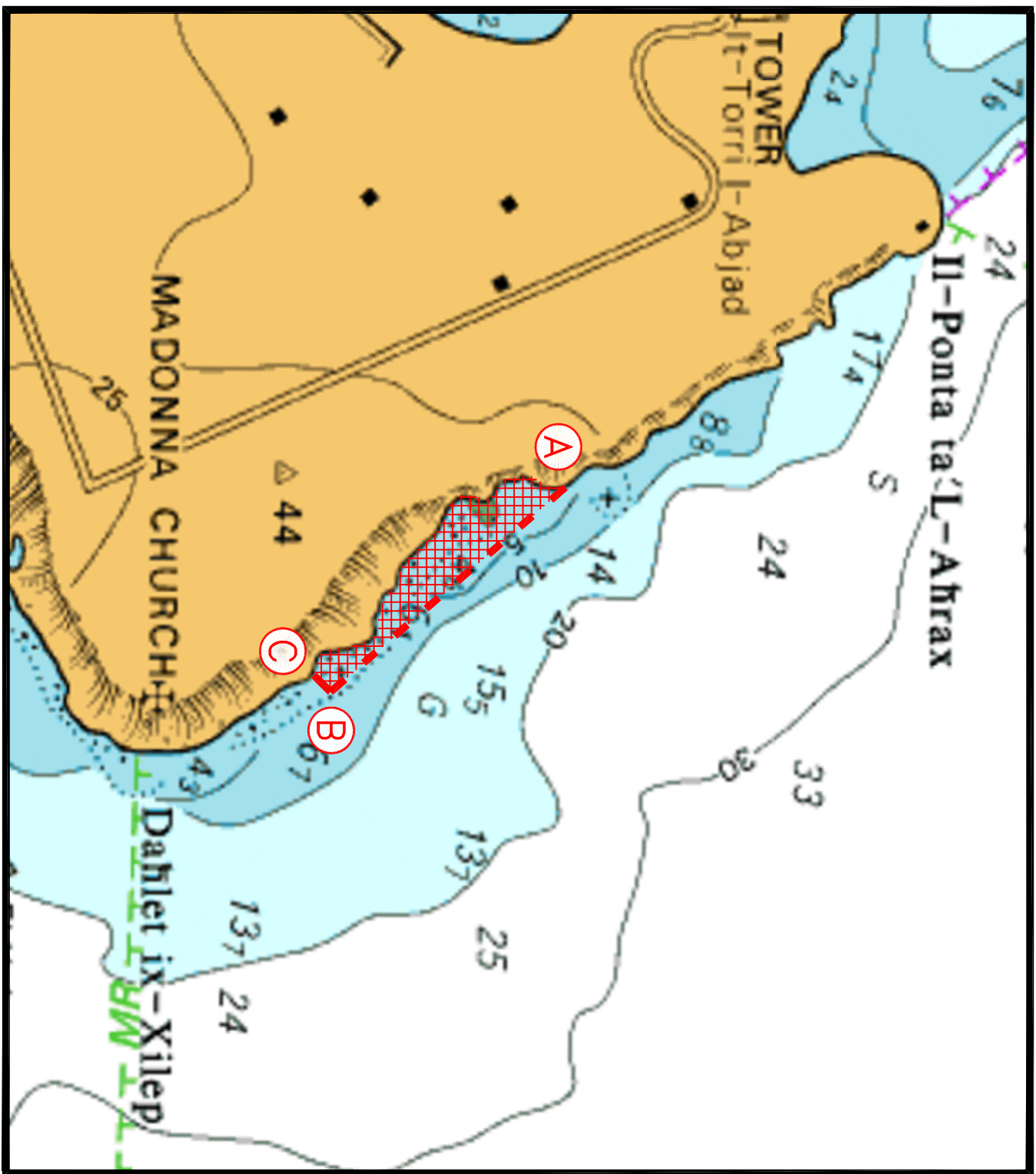
© British Crown Copyright 1970, 1983, 1986, 1988, 1999, 2000
 All rights reserved.

The UK Hydrographic Office makes the accompanying data
 Available to Malta Maritime Authority (Transport Malta)
 Under the terms and conditions of agreement HO 1427/020930/01.

DISCLAIMER

Whilst the UK Hydrographic Office has endeavoured to ensure
 That the material supplied is suitable for the purpose described,
 It accepts no liability (to the maximum extent permitted by law)
 For any damage or loss of any nature arising from its use.
 The material supplied is used entirely at the Recipient's own risk.

Chart 21

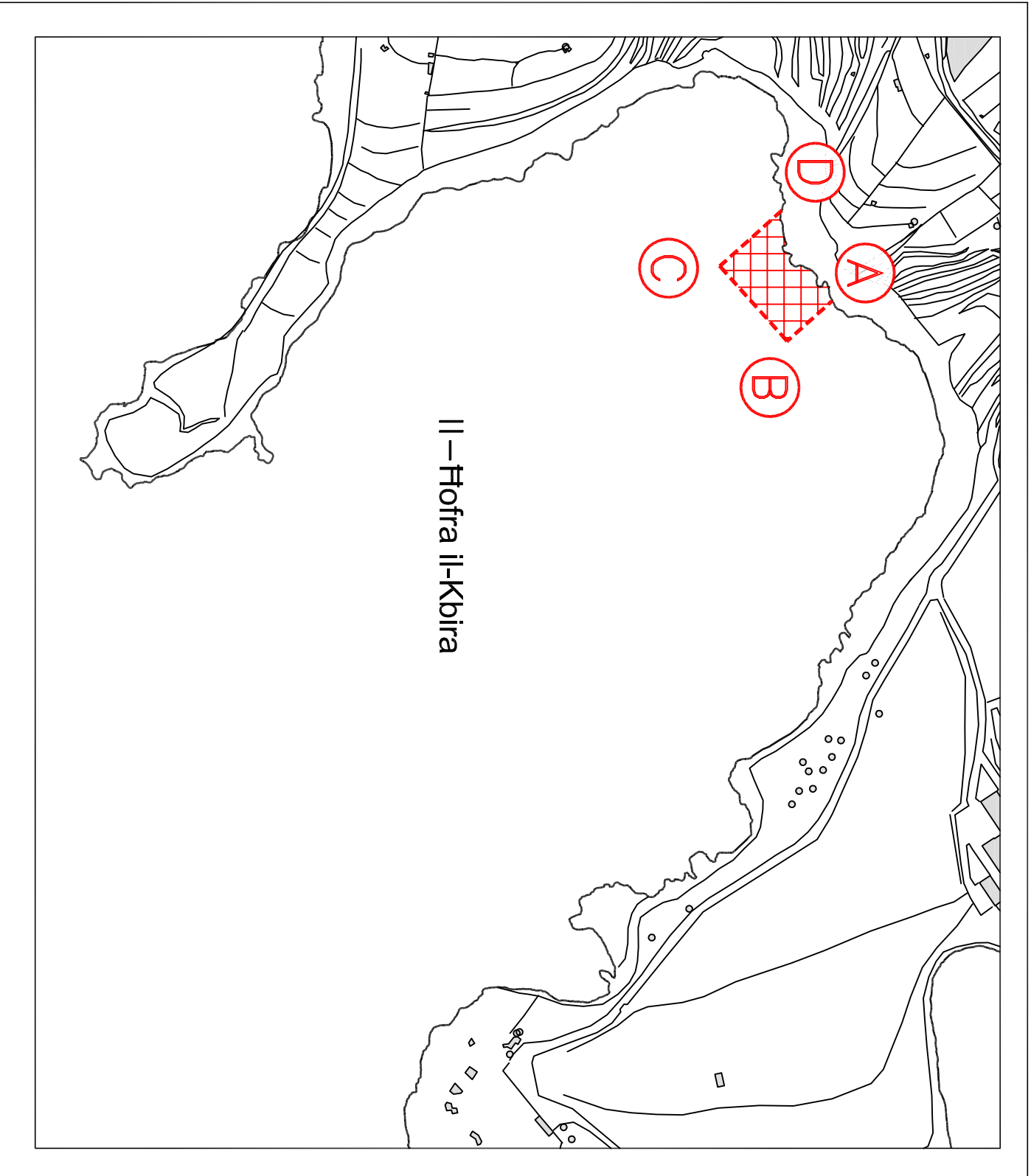


© British Crown Copyright 1970, 1983, 1986, 1988, 1999, 2000
All rights reserved.

The UK Hydrographic Office makes the accompanying data
Available to Malta Maritime Authority (Transport Malta)
Under the terms and conditions of agreement HO 1427/020930/01.

DISCLAIMER

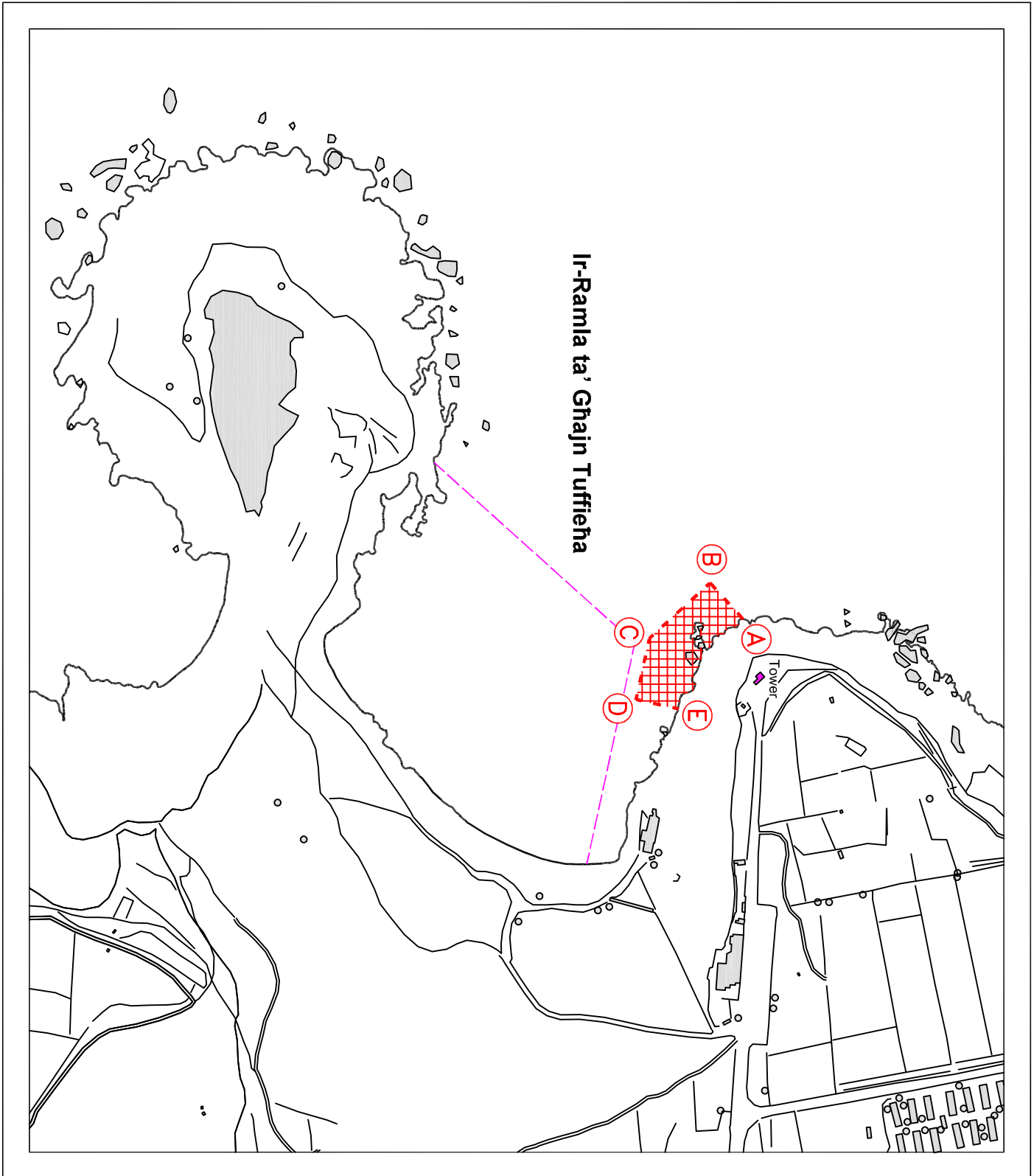
Whilst the UK Hydrographic Office has endeavoured to ensure
That the material supplied is suitable for the purpose described,
It accepts no liability (to the maximum extent permitted by law)
For any damage or loss of any nature arising from its use.
The material supplied is used entirely at the Recipient's own risk.



© Transport Malta all rights reserved

DISCLAIMER

Whilst the Ports and Yachting Directorate, Transport Malta has endeavoured to ensure that the material supplied is suitable for the purpose described, it accepts no liability (to the maximum extent permitted by law) for any damage or loss of any nature arising from its use.
The material supplied is used entirely at the Recipient's own risk.

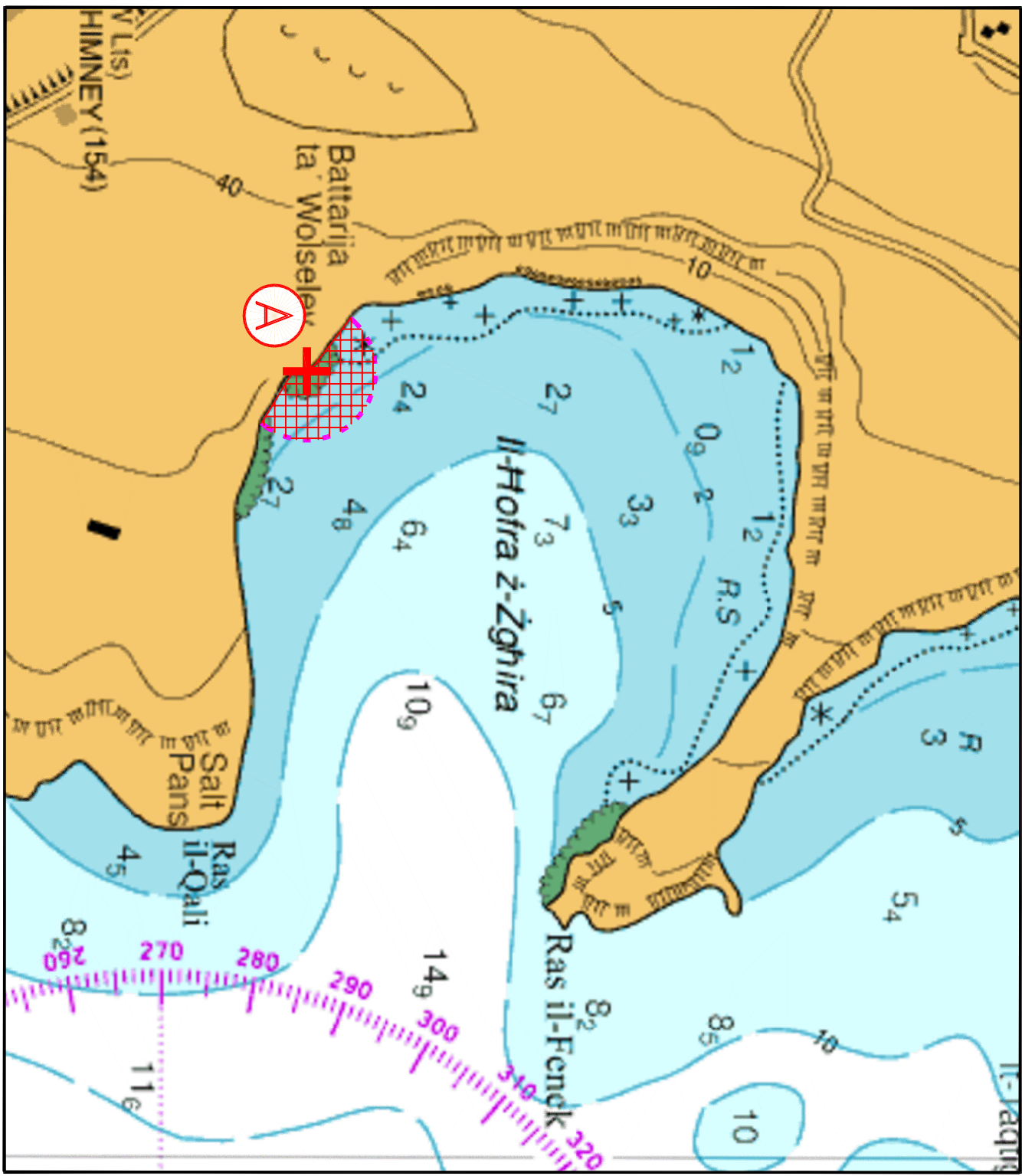


© Transport Malta all rights reserved

DISCLAIMER

Whilst the Ports and Yachting Directorate, Transport Malta has endeavoured to ensure that the material supplied is suitable for the purpose described, it accepts no liability (to the maximum extent permitted by law) for any damage or loss of any nature arising from its use.

The material supplied is used entirely at the Recipient's own risk.



© British Crown Copyright 1970, 1983, 1986, 1988, 1999, 2000
All rights reserved.

The UK Hydrographic Office makes the accompanying data
Available to Malta Maritime Authority (Transport Malta)
Under the terms and conditions of agreement HO 1427/020930/01.

DISCLAIMER

Whilst the UK Hydrographic Office has endeavoured to ensure
That the material supplied is suitable for the purpose described,
It accepts no liability (to the maximum extent permitted by law)
For any damage or loss of any nature arising from its use.
The material supplied is used entirely at the Recipient's own risk.