



PORTS AND YACHTING DIRECTORATE

LOCAL NOTICE TO MARINERS N° 210 of 2023

Our Ref: **TM/PYD/0083/97**

17 November 2023



Transport Malta

Malta Transport Centre
Marsa, MRS 1917
Malta

Tel: (356) 2122 2203
Fax: (356) 2125 0365
Email: info.tm@transport.gov.mt

www.transport.gov.mt

Recovery of anchors and chains from near 31 March Installation in Il-Bajja ta' Marsaxlokk

The Ports and Yachting Directorate, Transport Malta, notifies mariners and operators of vessels, that 2 unused anchors and their chain on the sea bottom in Il-Bajja ta' Marsaxlokk will be recovered.

The recovery operation will start on Tuesday 21st November 2023 and is expected to be completed by Tuesday 28th November 2023. The works will be carried out at points A and B as shown hatched on attached chart:

POINT	LATITUDE (N)	LONGITUDE (E)
A	35°49'.471	014°31'.994
B	35°49'.491	014°32'.018

The recovery operation will be carried out with the use of crane loaded on a vessel. The operation will also be assisted by divers, who will be displaying the International Code Flag "A".

The vessel carrying out the operation will be restricted in manoeuvrability.

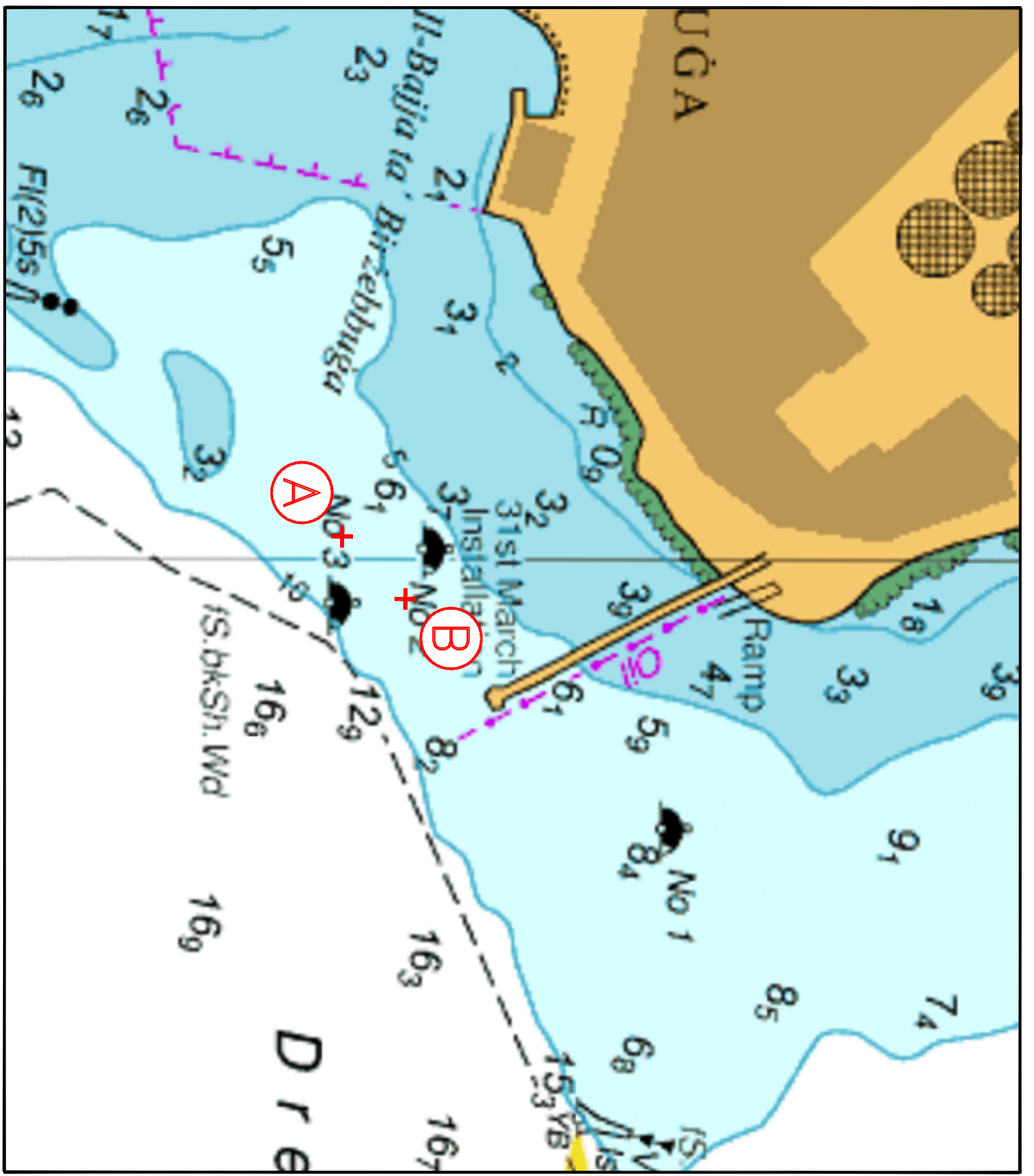
A safety zone of 200m from the above-mentioned points is to be kept while the recovery operation is being carried out.

Mariners are advised to navigate with caution at slow speed and give a wide berth when in the vicinity and are to cooperate with the contractor on site.

They are to comply with instructions given on VHF Channel 14 and/or 16 by Marsaxlokk VTS.

Chart affected: **BA 36**

Positions referred to **WGS 84 DATUM**



© British Crown Copyright 1970, 1983, 1986, 1988, 1999, 2000
All rights reserved.

The UK Hydrographic Office makes the accompanying data
Available to Malta Maritime Authority (Transport Malta)
Under the terms and conditions of agreement HO 1427/020930/01.

DISCLAIMER

Whilst the UK Hydrographic Office has endeavoured to ensure
That the material supplied is suitable for the purpose described,
It accepts no liability (to the maximum extent permitted by law)
For any damage or loss of any nature arising from its use.
The material supplied is used entirely at the Recipient's own risk.