



PORTS AND YACHTING DIRECTORATE

LOCAL NOTICE TO MARINERS N° 154 of 2023

Our Ref: **TM/PYD/70/02**

14 August 2023



Transport Malta

Malta Transport Centre,
Triq Pantar, Hal Lija, LJA 2021
Malta

Tel: (356) 2122 2203
Fax: (356) 2125 0365
Email: info.tm@transport.gov.mt

www.transport.gov.mt

ROV survey (video footage) at different localities in Malta and Gozo

The Ports and Yachting Directorate, Transport Malta, notifies mariners that a survey will be carried out with the use of a Remotely Operated Vehicle (ROV). This survey will consist of video footage at three different localities in Malta and Gozo.

The survey which will take one day at each locality is planned to be carried out on any days between Monday 21st August 2023 and Saturday 30th September 2023.

The ROV survey will be held at the following localities:

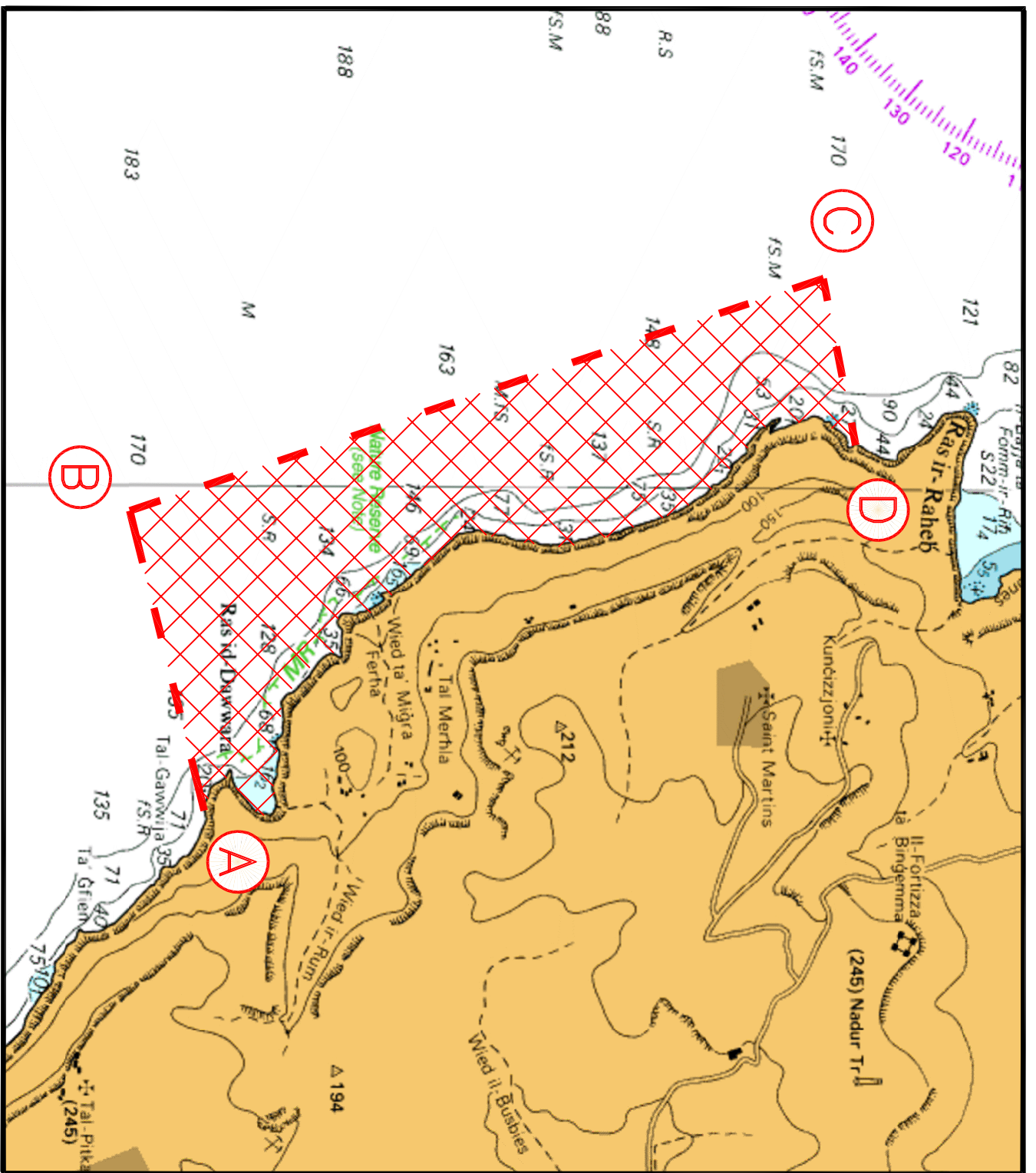
- | | |
|---------------|--|
| Off Dingli | within the area formed by joining the points A, B, C, D, and the intermediate coastline, as shown on the attached chart 1. |
| Off Sannat | within the area formed by joining the points E, F, G, and the intermediate coastline, as shown on the attached chart 2. |
| North of Gozo | within the area formed by joining the points H, I, J, K, and the intermediate coastline, as shown on the attached chart 3. |

The ROV will be operated from a support vessel.

Mariners are instructed to navigate with caution when in the vicinity of the above-mentioned areas, they are to maintain a safe distance of 50m from the ROV and support vessel.

All mariners are to cooperate with the contractor and to comply with any instructions given on VHF Channel 12 and/or 16, by Valletta VTS.

Charts Affected: **BA 2537, 2538**



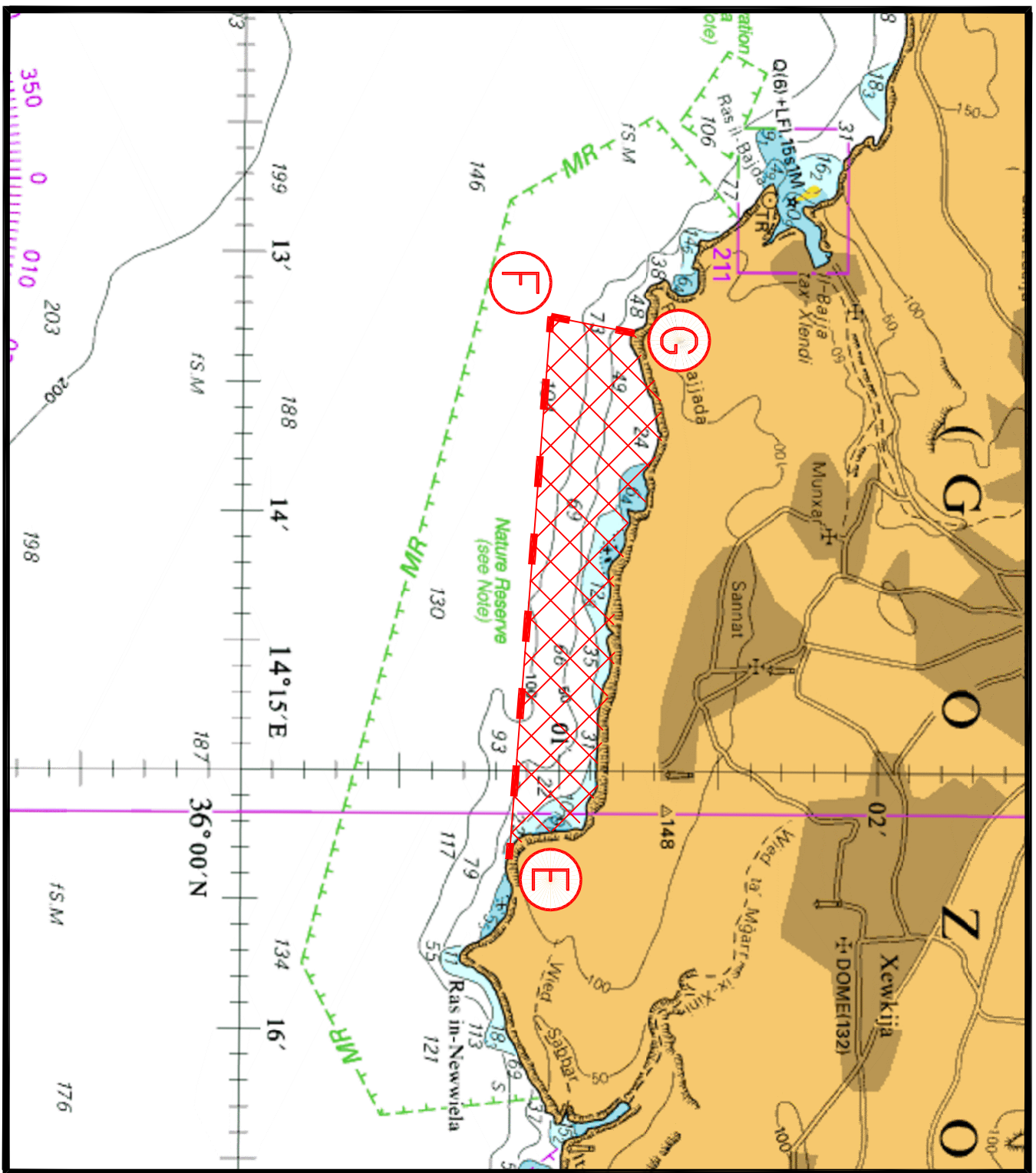
© British Crown Copyright 1970, 1983, 1986, 1988, 1999, 2000
 All rights reserved.

The UK Hydrographic Office makes the accompanying data
 Available to Malta Maritime Authority (Transport Malta)
 Under the terms and conditions of agreement HO 1427/020930/01.

DISCLAIMER

Whilst the UK Hydrographic Office has endeavoured to ensure
 That the material supplied is suitable for the purpose described,
 it accepts no liability (to the maximum extent permitted by law)
 For any damage or loss of any nature arising from its use.
 The material supplied is used entirely at the Recipient's own risk.

Chart 1



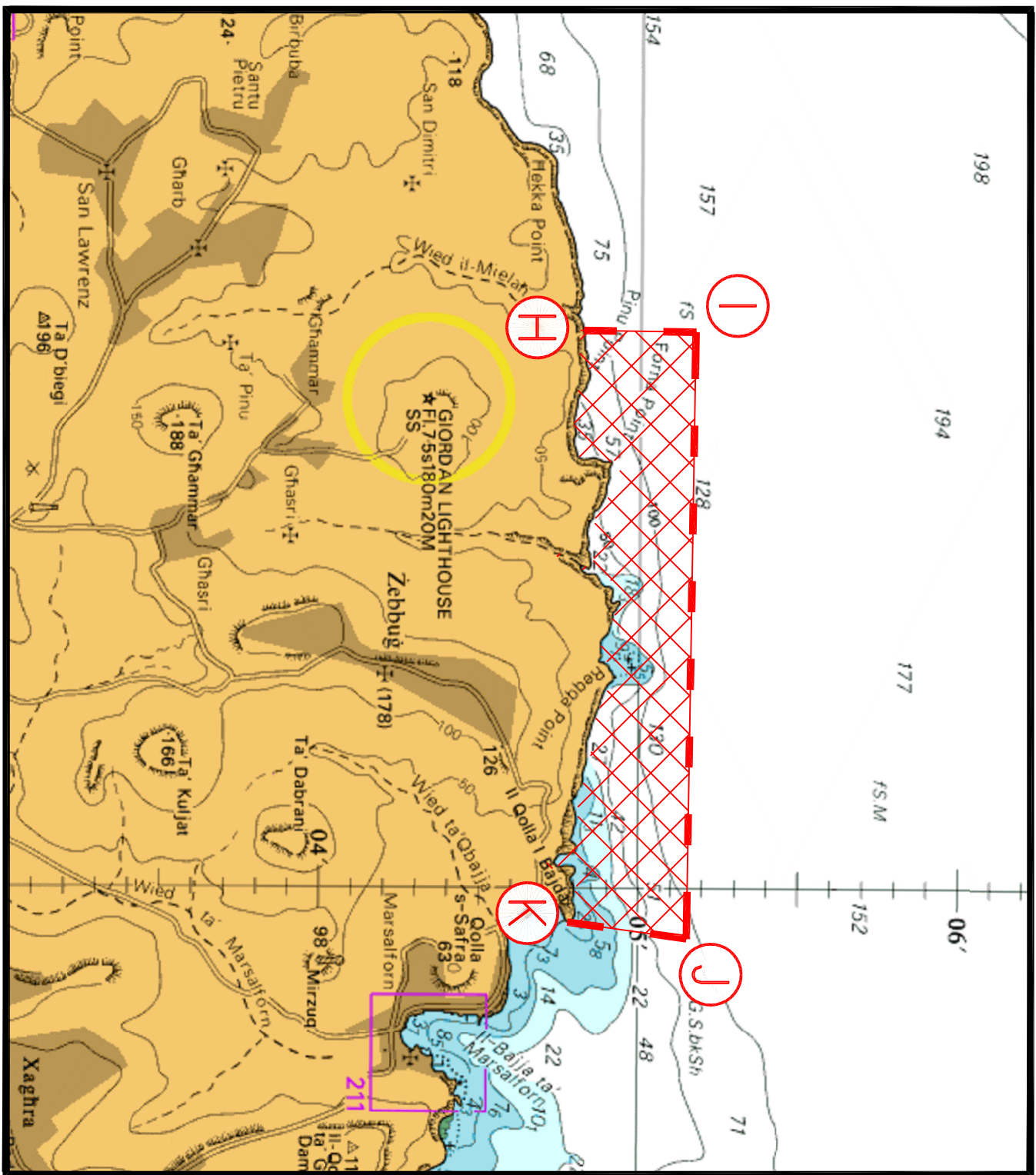
© British Crown Copyright 1970, 1983, 1986, 1988, 1999, 2000
All rights reserved.

The UK Hydrographic Office makes the accompanying data
Available to Malta Maritime Authority (Transport Malta)
Under the terms and conditions of agreement HO 1427/020930/01.

DISCLAIMER

Whilst the UK Hydrographic Office has endeavoured to ensure
That the material supplied is suitable for the purpose described,
It accepts no liability (to the maximum extent permitted by law)
For any damage or loss of any nature arising from its use.
The material supplied is used entirely at the Recipient's own risk.

Chart 2



© British Crown Copyright 1970, 1983, 1986, 1988, 1999, 2000
 All rights reserved.

The UK Hydrographic Office makes the accompanying data
 Available to Malta Maritime Authority (Transport Malta)
 Under the terms and conditions of agreement HO 1427/020930/01.

DISCLAIMER

Whilst the UK Hydrographic Office has endeavoured to ensure
 That the material supplied is suitable for the purpose described,
 It accepts no liability (to the maximum extent permitted by law)
 For any damage or loss of any nature arising from its use.
 The material supplied is used entirely at the Recipient's own risk.

Chart 3