



PORTS AND YACHTING DIRECTORATE



Transport Malta

LOCAL NOTICE TO MARINERS No 053 of 2023

Our Ref: **TM/PYD/22/01 Vol VI**

10 April 2023

Malta Transport Centre,
Triq Pantar, Hal Lija, LJA 2021
Malta

Tel: (356) 2122 2203
Fax: (356) 2125 0365
Email: info.tm@transport.gov.mt

www.transport.gov.mt

Malta International Fireworks Festival 2023

The Ports and Yachting Directorate, Transport Malta, hereby notifies mariners that firework displays will be held in the Grand Harbour on Monday 24th April, Friday 28th April and Sunday 30th April 2023.

Barges will be moored and loaded with fireworks at Kalkara Quay in Il-Bajja tar-Rinella.

Owners of vessels moored in Il-Bajja tar-Rinella are to remove their vessels and the area to remain clear from Friday 21st April 2023 at 2359 hours to Monday 1st May 2023 at 2359 hours. Transport Malta will accept no liabilities whatsoever for any damage caused to vessels that are left within Il-Bajja tar-Rinella during the mentioned dates and times.

On each day of the display, between 0800 hours and 1000 hours the sinkers, which will be marked with lit buoys, for the pontoons will be set up.

The pontoons and barges will depart from Il-Bajja tar-Rinella at 1400 hour to be set up.

The pontoons will be moored along the line S to T and the barges will be moored at points U, V and W, as shown on the attached chart, and will be removed immediately after the displays finish.

Mariners are informed that part of the Grand Harbour, between the imaginary lines A - B, C - D, E - F, G - H and the intermediate coastline, as shown on the attached chart 1, will be closed to all vessels, except for authorised vessels as stated for each day.

POSITION	LATITUDE (N)	LONGITUDE (E)
A	35° 53'.590	014° 30'.699
B	35° 53'.458	014° 30'.831
C	35° 53'.417	014° 30'.937
D	35° 53'.512	014° 31'.031
E	35° 53'.541	014° 31'.155
F	35° 53'.545	014° 31'.359



Transport Malta

G	35° 53'.963	014° 31'.376
H	35° 54'.143	014° 31'.221
S	35° 53'.794	014° 31'.114
T	35° 53'.642	014° 30'.841
U	35° 53'.681	014° 31'.150
V	35° 53'.660	014° 31'.113
W	35° 53'.662	014° 31'.282

On Monday 24th April 2023

The Grand Harbour will be closed to traffic from 1900 hours to 2300 hours, while the display will start at 2030 hours and finish at 2245 hours.

On Friday 28th April 2023

The Grand Harbour will be closed to traffic from 2015 hours to 2315 hours, while the display will start at 2100 hours and finish at 2300 hours.

On Sunday 30th April 2023

The Grand Harbour will be closed to traffic from 1945 hours to 2315 hours, while the display will start at 2030 hours and finish at 2300 hours.

Barriera Wharf, Lascaris Wharf and Fish Market are to be kept clear on the days of the displays from 0001 hours to 2359 hours, except for authorised vessels.

During the event shipping movements in the Grand Harbour will be restricted. No vessel will be allowed within the restricted area, except by arrangement through the organizing Committee / Valletta VTS. Authorized vessels MUST be securely moored by not later than 2030 in the designated areas, as shown in blue on the attached chart 1.

All vessels and bathers are warned to keep well clear and maintain a safe distance of not less than 200 metres from the barges and 50 metres from the pontoons while they are being towed.

Authorized vessels are to give the display pontoons and barges a wide berth of at least 200m. No movements whatsoever will be allowed during the actual displays.

Another part of the activity will be firework displays from Manoel Island. The displays will be let off from points M and N, as shown on the attached chart 2, as follows:



Transport Malta

POSITION	LATITUDE (N)	LONGITUDE (E)
M	35° 54'.238	014° 30'.266
N	35° 54'.106	014° 30'.338

From point M

On Sunday 23rd April, from 0900 hours to 0915 hours and from 1900 hours to 2100 hours.
From Monday 24th April 2023 to Friday 28th April 2023, from 0900 hours to 0915 hours daily.

From point N

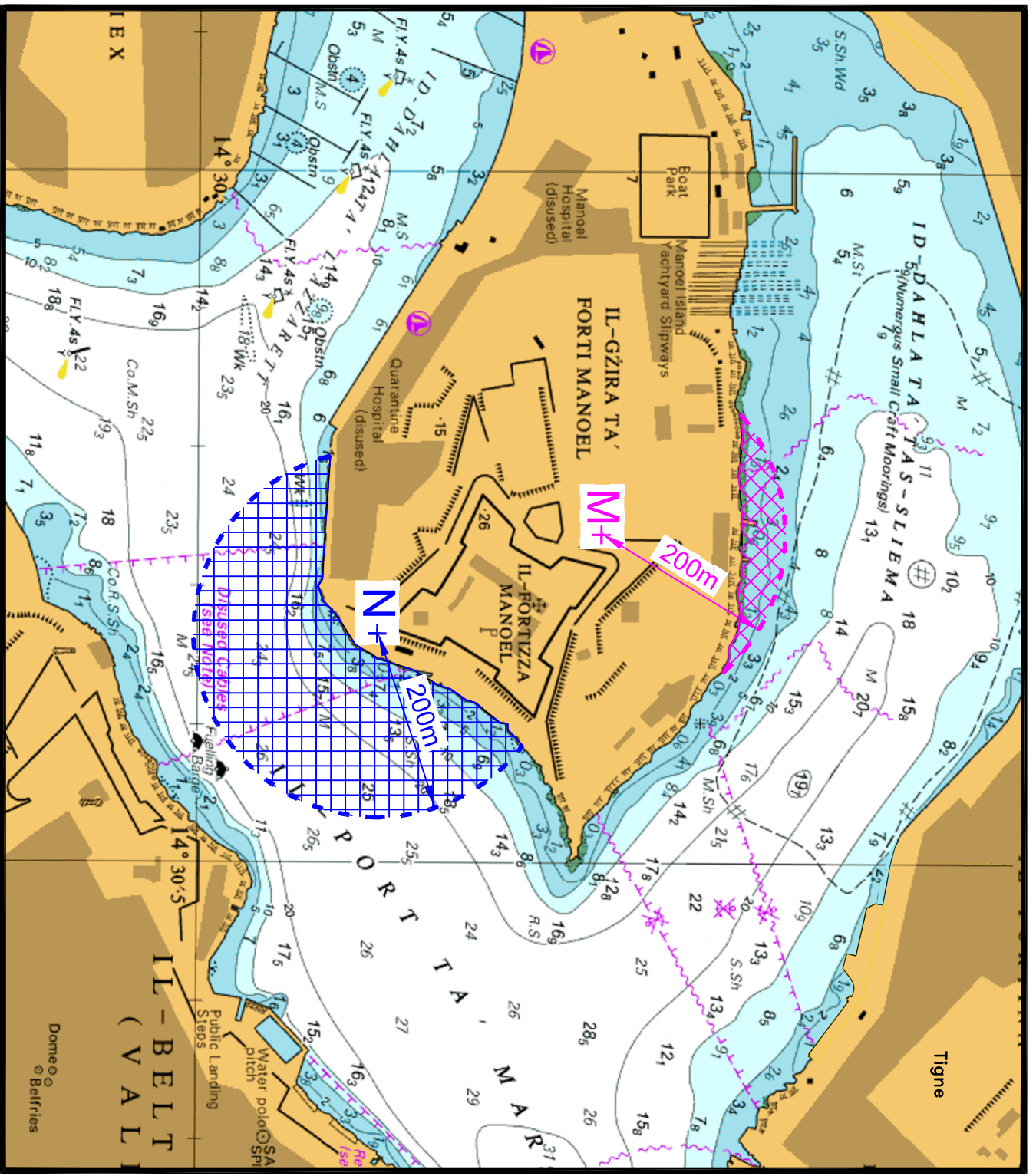
On Sunday 23rd April 2023, from 2000 hours to 2200 hours.

Masters and owners of vessels that are berthed or moored within 200m from point M, within the area shown in magenta on attached chart 2 and within 200m from point N, within the area shown in blue on the attached chart 2, are to remove their vessels during the above-mentioned dates and times.

The Ports and Yachting Directorate, Transport Malta will accept no liabilities whatsoever for any vessels that are left berthed or moored in the areas mentioned above, on the above-mentioned dates and times.

Mariners are to comply with any instructions and directions issued on VHF channel 12 / 16 by Valletta VTS and Maritime Enforcement Officers that will be in the area.

Chart Affected: **BA 177**



© British Crown Copyright 1970, 1983, 1986, 1988, 1999, 2000
All rights reserved.

The UK Hydrographic Office makes the accompanying data Available to Malta Maritime Authority (Transport Malta) Under the terms and conditions of agreement HO 1427/020930/01.

DISCLAIMER

Whilst the UK Hydrographic Office has endeavoured to ensure That the material supplied is suitable for the purpose described, it accepts no liability (to the maximum extent permitted by law) For any damage or loss of any nature arising from its use. The material supplied is used entirely at the Recipient's own risk.

Chart 2