



PORTS AND YACHTING DIRECTORATE

## NOTICE TO MARINERS No 09 of 2023

Our Ref: **TM/PYD/ 0001/23**

15 February 2023



**Transport Malta**

Malta Transport Centre,  
Triq Pantar, Hal Lija, LJA 2021  
Malta

Tel: (356) 2122 2203  
Fax: (356) 2125 0365  
Email: [info.tm@transport.gov.mt](mailto:info.tm@transport.gov.mt)

[www.transport.gov.mt](http://www.transport.gov.mt)

### **LIFE Arcipelagu Garnija Project – Restriction areas around Malta**

The Ports and Yachting Directorate, Malta Transport notifies mariners that as part of the LIFE Arcipelagu Garnija project, the Environment and Resources Authority (ERA) has established a number of restrictions, in line with:

- The Birds Directive (Directive 2009/147/EC) transposed into Maltese legislation through the Conservation of Wild Birds Regulations (S.L. 549.42)
- The Habitats Directive (Directive 92/43/EEC) transposed into Maltese legislation through the Flora, Fauna and Natural Habitats Protection Regulations (S.L. 549.44).
- The Marine Strategy Framework Directive (Directive 2008/56/EC) transposed into Maltese legislation through the Marine Policy Framework Regulations (S.L. 549.62).

In order not to disturb the natural environment and habitats, all mariners shall, in addition to the above Directives, comply with the following accordingly: -

- Fully comply with the Requirements of the Collision Regulations for the Prevention of Collisions at Sea COLREGS 72 (as amended) concerning Lights, Shapes and Sound Signals.
- The Rules for Lights shall be complied with from sunset to sunrise, and during such times no other lights shall be exhibited, except such lights as cannot be mistaken for the lights specified in the Rules or do not impair their visibility or distinctive character or interfere with the keeping of a proper look-out.
- The use of ultra-long throw searchlights, laser, strobe, flashing and bright coloured lights is prohibited in the areas as indicated on the attached charts.
- Loud music, horns, sirens, and bells, other than as required by the Rules, are also prohibited in the areas as indicated on the charts.
- Observation of any speed restrictions.
- Maintaining a distance off as prescribed in this Notice.
- Action will be taken against anybody not observing these restrictions. Offenders may be liable to legal prosecution.



Transport Malta

### **Blue Grotto – Qrendi - Chart 1**

The restricted area is shown in red. It is formed by the imaginary line 1F to 1G and the intermediate coastline. Navigation and anchoring are not permitted in the area except for vessels engaged in fishing, local commercial activities, and recreational diving operations. Only compulsory lights and sound. All year round and at all times.

Shown in blue – Formed by the imaginary lines 1A to 1B to 1C to 1D to 1E, the imaginary line 1F to 1G and the intermediate coastline - Only compulsory lights and sounds. All year round and at all times.

Position	Latitude (N)	Longitude (E)
1A	35° 49'.213	014° 27'.724
1B	35° 48'.984	014° 27'.570
1C	35° 48'.938	014° 27'.382
1D	35° 49'.037	014° 27'.128
1E	35° 49'.140	014° 27'.182
1F	35° 49'.165	014° 27'.334
1G	35° 49'.192	014° 27'.574

### **Cominotto – Blue Lagoon - Chart 2**

Shown in red – Formed by the imaginary lines 2C to 2B to 2D and the intermediate coastline - No anchoring in the area except for fishing and diving vessels. Maximum speed 3 knots. Only compulsory lights and sounds. All year round and at all times.

Shown in blue – Formed by the imaginary lines 2A to 2B to 2C and the intermediate coastline - Only compulsory lights and sounds. Maximum speed 10 knots. All year round and at all times.

Position	Latitude (N)	Longitude (E)
2A	36° 00'.222	014° 19'.472
2B	36° 00'.638	014° 19'.206
2C	36° 00'.731	014° 19'.370
2D	36° 00'.716	014° 19'.156



Transport Malta

### **Dwejra – Gozo - Chart 3**

Shown in red – Formed by the imaginary lines 3A to 3B to 3C to 3D to 3E and the intermediate coastline - Only compulsory sounds and lights allowed. Maximum speed 5 knots. All year round and at all times.

Position	Latitude (N)	Longitude (E)
3A	36° 02'.729	014° 11'.366
3B	36° 02'.721	014° 11'.288
3C	36° 02'.809	014° 11'.220
3D	36° 02'.871	014° 11'.243
3E	36° 02'.886	014° 11'.294

### **Majjistral NHP - Chart 4**

Shown in red - All transiting traffic to maintain a minimum distance of 100 m from the cliff. All year round and at all times.

Shown in blue - Formed by the imaginary lines 4A to 4B to 4C to 4D to 4E and the intermediate coastline - Only compulsory light and sounds. All year round and at all time.

Position	Latitude (N)	Longitude (E)
4A	35° 56'.678	014° 19'.905
4B	35° 56'.826	014° 19'.360
4C	35° 57'.223	014° 19'.663
4D	35° 57'.828	014° 19'.364
4E	35° 58'.115	014° 19'.586

### **Migra I-Ferha - Chart 5**

Shown in red - Formed by the imaginary line 5A to 5B and the intermediate coastline - No navigation and no anchoring in the area except for fishing and diving vessels. Only compulsory light and sounds. All year round and at all times.

Shown in blue - All transiting traffic to maintain a minimum distance of 100 m from the cliff. All year round and at all times.

Position	Latitude (N)	Longitude (E)
5A	35° 52'.084	014° 21'.095
5B	35° 52'.232	014° 20'.978



Transport Malta

### **Santa Marija caves - Chart 6**

Shown in red – Formed by the imaginary line 6E to 6F and the intermediate coastline - No anchoring in the area except for fishing and diving vessels. Maximum speed 3 knots. Only compulsory lights and sound. All year round and at all times.

Shown in blue – Formed by the imaginary lines 6A to 6B to 6C to 6D, the imaginary line 6E to 6F and the intermediate coastline - No stopping and no anchoring zone of 0.5 NM except for fishing and diving vessels. Only compulsory lights and sound. All year round and at all times.

Position	Latitude (N)	Longitude (E)
6A	36° 01'.141	014° 20'.400
6B	36° 01'.475	014° 20'.761
6C	36° 01'.248	014° 21'.080
6D	36° 00'.914	014° 20'.716
6E	36° 00'.960	014° 20'.665
6F	36° 01'.116	014° 20'.427

### **St. Paul's Islands - Chart 7**

Shown in red - Formed by the imaginary lines 7A to 7B, the imaginary line 7C to 7D and the intermediate coastline - Only compulsory lights and sound. Maximum speed 5 knots. All year round and at all times.

Shown in blue – Formed by the circle of radius 0.5NM centred on point 7E - Only compulsory lights and sound. All year round and at all times.

Position	Latitude (N)	Longitude (E)
7A	35° 57'.838	014° 23'.951
7B	35° 57'.812	014° 23'.864
7C	35° 58'.066	014° 23'.824
7D	35° 57'.970	014° 24'.066
7E	35° 57'.985	014° 24'.176



Transport Malta

**Ta' Cenc - Chart 8**

Shown in red - All transiting vessels to maintain a minimum distance of 100m from the cliffs. All year round and at all times.

Shown in blue – Formed by the imaginary lines 8A to 8B to 8C to 8D to 8E to 8F and the intermediate coastline - Only compulsory sounds and lights allowed. Maximum speed 10 knots. All year round and at all times.

8A	36° 00'.952	014° 16'.260
8B	36° 00'.448	014° 16'.330
8C	36° 00'.197	014° 15'.744
8D	36° 00'.835	014° 12'.796
8E	36° 01'.285	014° 12'.469
8F	36° 01'.560	014° 12'.865

Mariners are also reminded to navigate with caution and slow speed and give the indicated areas a wide berth. They are to comply with any instructions given by Valletta Port Control (Valletta VTS) on VHF Channel 12.

Notice to Mariners No. 44 of 2020 of Transport Malta is hereby **CANCELLED**.

Charts affected: **BA 194, 211, 2537**

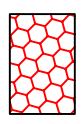
© Transport Malta all rights reserved

**DISCLAIMER**

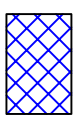
Whilst the Ports and Yachting Directorate, Transport Malta has endeavoured to ensure that the material supplied is suitable for the purpose described, it accepts no liability (to the maximum extent permitted by law) for any damage or loss of any nature arising from its use.

The material supplied is used entirely at the Recipient's own risk.

### Blue Grotto – Qrendi



No navigation and no anchoring in the area except for fishing and diving vessels and local commercial vessels operating in the area. Only compulsory lights and sound. All year round and at all times.



Only compulsory lights and sound. All year round and at all times.

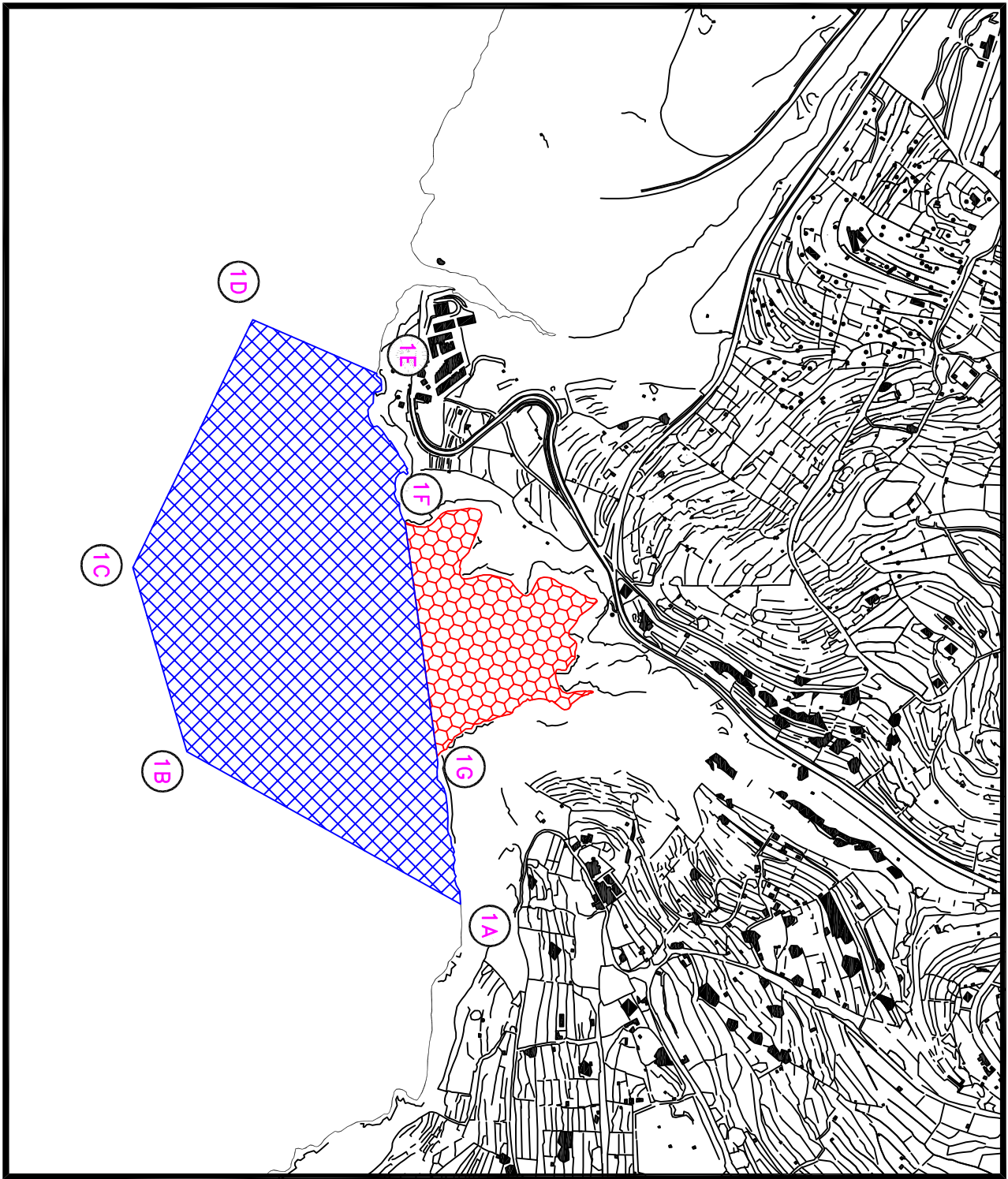


Chart 1

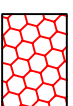
© British Crown Copyright 1970, 1983, 1986, 1988, 1999, 2000  
All rights reserved.

The UK Hydrographic Office makes the accompanying data  
Available to Malta Maritime Authority (Transport Malta)  
Under the terms and conditions of agreement HO 1427/020930/01.

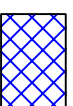
#### DISCLAIMER

Whilst the UK Hydrographic Office has endeavoured to ensure  
That the material supplied is suitable for the purpose described,  
It accepts no liability (to the maximum extent permitted by law)  
For any damage or loss of any nature arising from its use.  
The material supplied is used entirely at the Recipient's own risk.

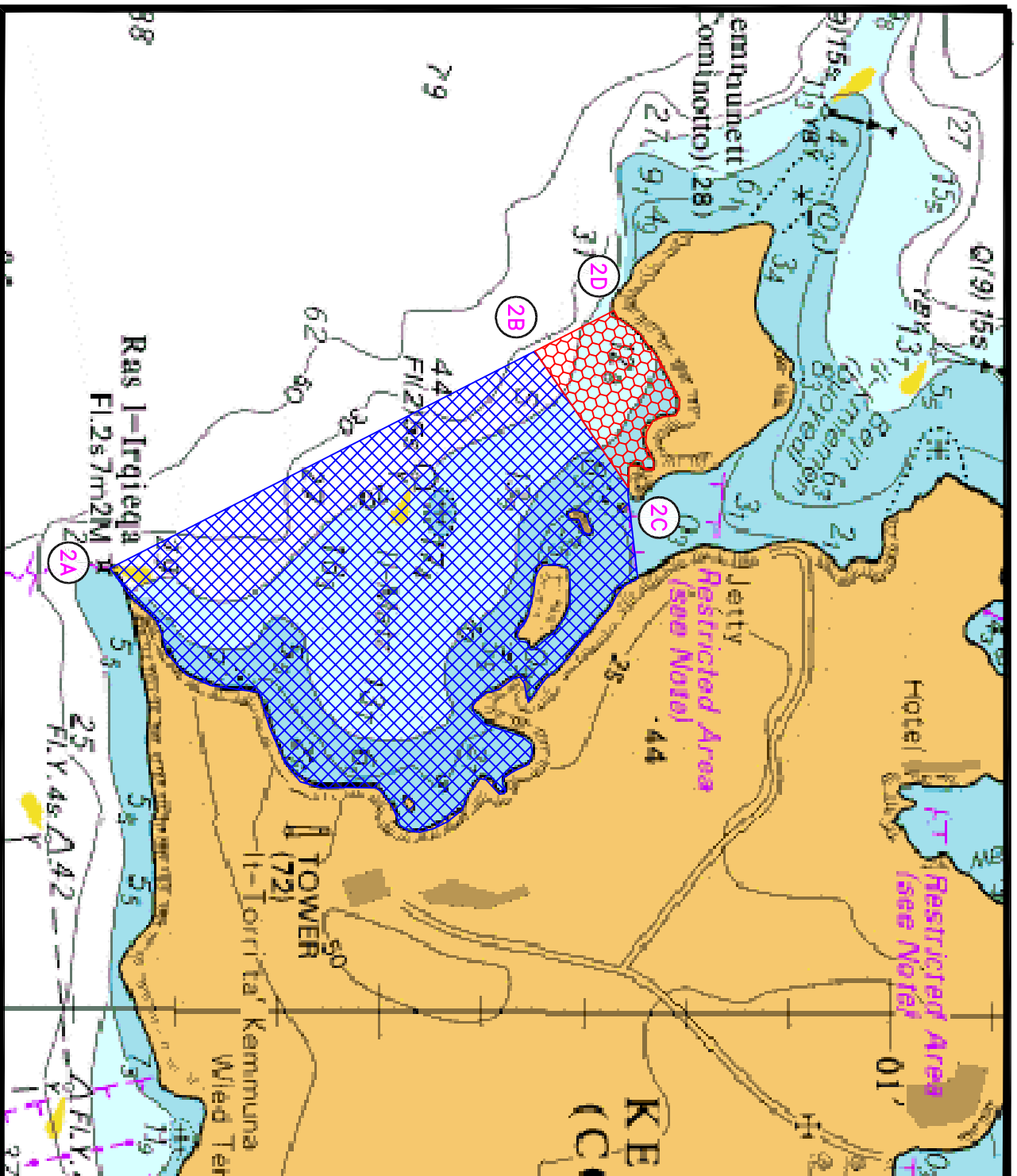
## Cominotto – Blue Lagoon



No anchoring in the  
area except for  
fishing and diving  
vessels. Maximum  
speed 3 knots.  
Only compulsory  
lights and sound.  
All year round and  
at all times.



Only compulsory  
lights and sounds.  
Maximum speed 10  
knots. All year  
round and at all  
times.



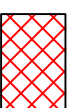
© British Crown Copyright 1970, 1983, 1986, 1988, 1999, 2000  
All rights reserved.

The UK Hydrographic Office makes the accompanying data  
Available to Malta Maritime Authority (Transport Malta)  
Under the terms and conditions of agreement HO 1427/020930/01.

#### DISCLAIMER

Whilst the UK Hydrographic Office has endeavoured to ensure  
That the material supplied is suitable for the purpose described,  
It accepts no liability (to the maximum extent permitted by law)  
For any damage or loss of any nature arising from its use.  
The material supplied is used entirely at the Recipient's own risk.

## Dwejra – Gozo



Only compulsory  
lights and sounds.  
Maximum speed 5  
knots. All year  
round and at all  
times.

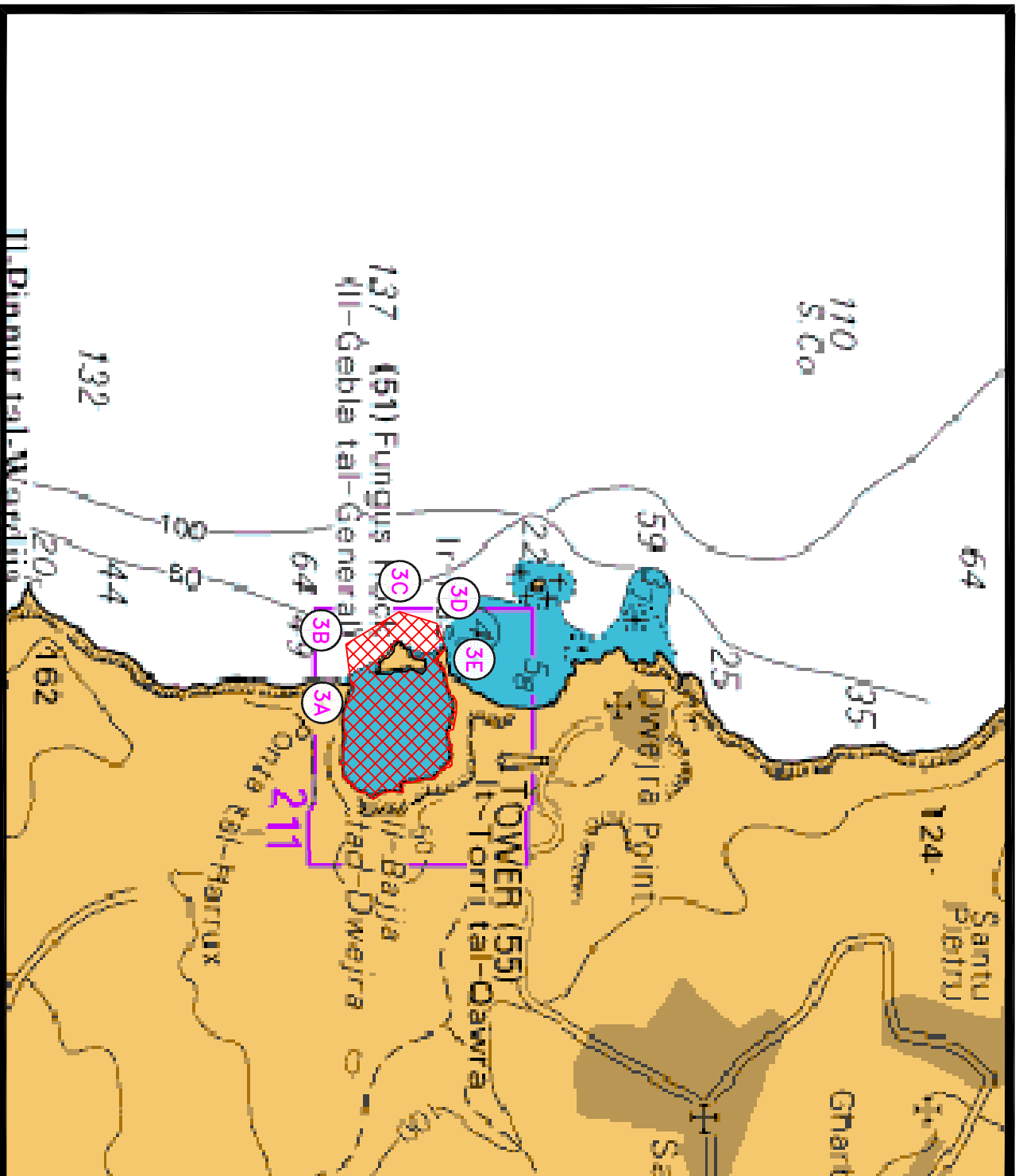
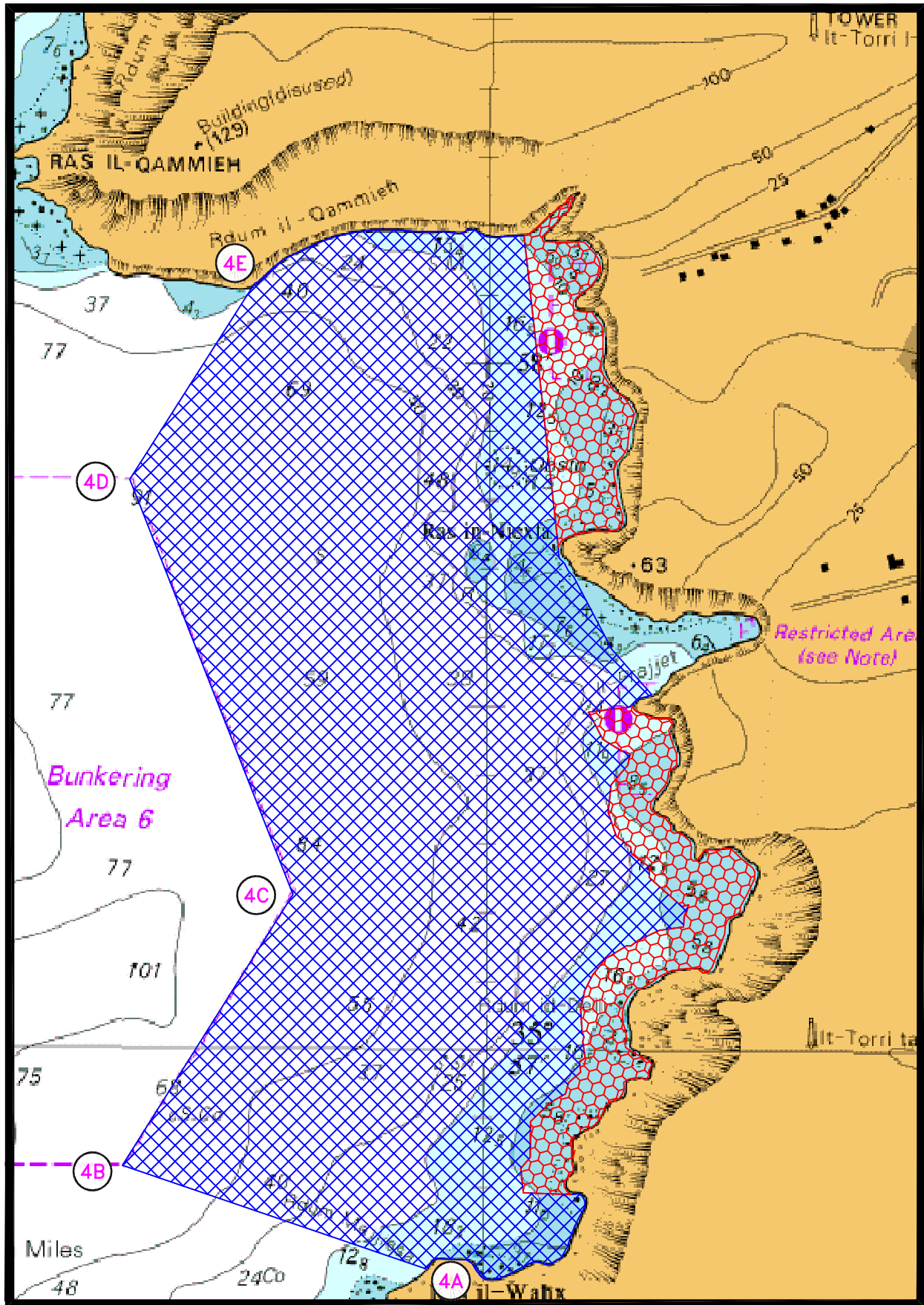


Chart 3



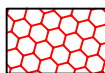


© British Crown Copyright 1970, 1983, 1986, 1988, 1999, 2000  
All rights reserved.

The UK Hydrographic Office makes the accompanying data  
Available to Malta Maritime Authority (Transport Malta)  
Under the terms and conditions of agreement HO 1427/020930/01.

**DISCLAIMER**

Whilst the UK Hydrographic Office has endeavoured to ensure  
That the material supplied is suitable for the purpose described,  
It accepts no liability (to the maximum extent permitted by law)  
For any damage or loss of any nature arising from its use.  
The material supplied is used entirely at the Recipient's own risk.



All transiting traffic  
to maintain a minimum  
distance of 100m. All  
year round and at all  
times.



Only compulsory lights  
and sounds. All year  
round and at all times.

**Majjistral NHP**

**Chart 4**

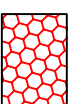
© British Crown Copyright 1970, 1983, 1986, 1988, 1999, 2000  
 All rights reserved.

The UK Hydrographic Office makes the accompanying data  
 Available to Malta Maritime Authority (Transport Malta)  
 Under the terms and conditions of agreement HO 1427/020930/01.

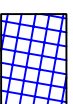
**DISCLAIMER**

Whilst the UK Hydrographic Office has endeavoured to ensure  
 That the material supplied is suitable for the purpose described,  
 It accepts no liability (to the maximum extent permitted by law)  
 For any damage or loss of any nature arising from its use.  
 The material supplied is used entirely at the Recipient's own risk.

**Migra l-Ferha**



No navigation and no  
 anchoring in the area  
 except for fishing and  
 diving vessels. Only  
 compulsory lights and  
 sound. All year round  
 and at all times.



All transiting traffic  
 to maintain a minimum  
 distance of 100m. All  
 year round and at all  
 times.

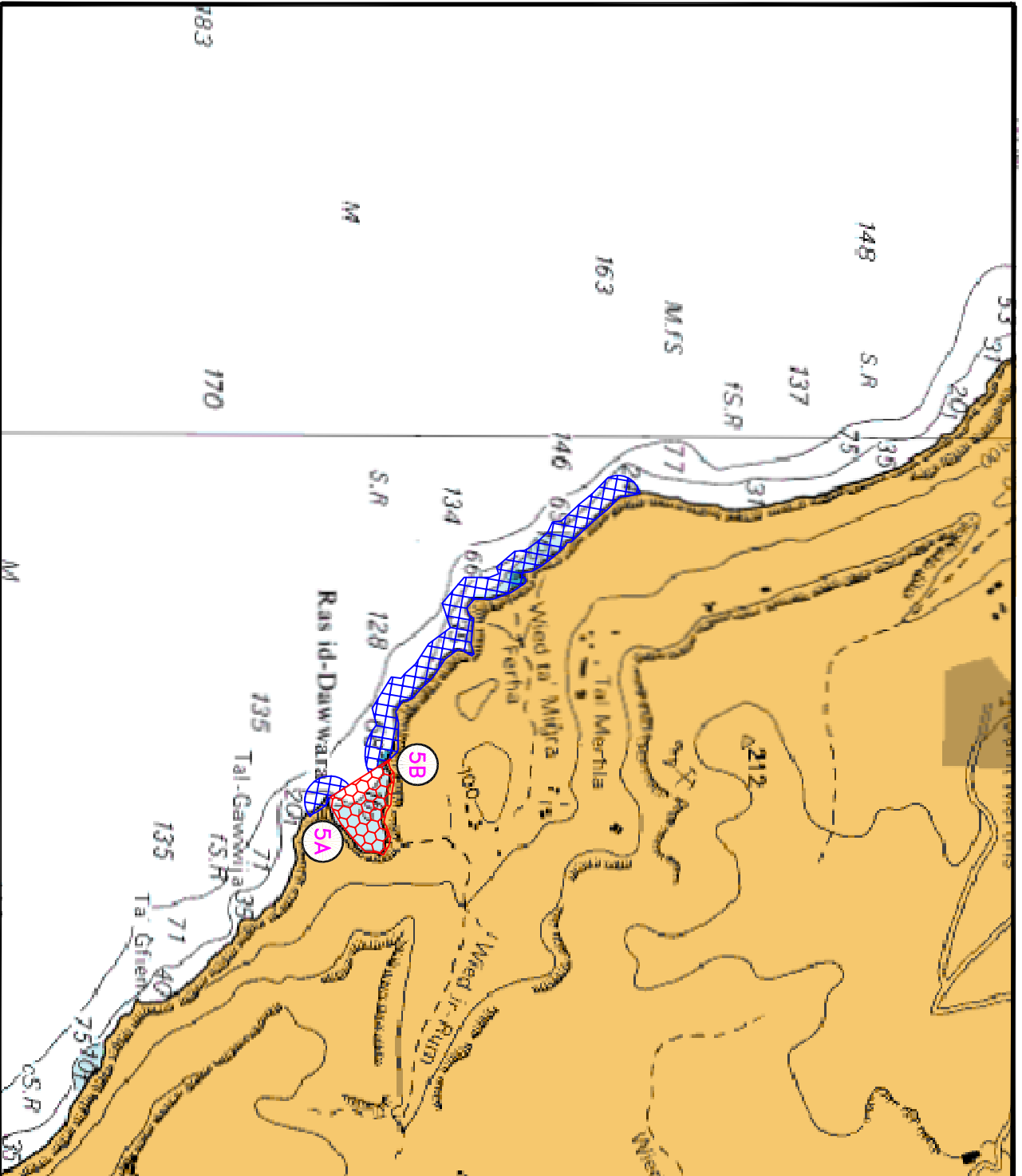


Chart 5

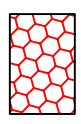
© Transport Malta all rights reserved

**DISCLAIMER**

Whilst the Ports and Yachting Directorate, Transport Malta has endeavoured to ensure that the material supplied is suitable for the purpose described, it accepts no liability (to the maximum extent permitted by law) for any damage or loss of any nature arising from its use.

The material supplied is used entirely at the Recipient's own risk.

### Santa Marija caves



No anchoring except for diving and fishing vessels.  
Maximum speed 3 knots.  
Only compulsory lights and sound. All year round and at all times.



Only compulsory lights and sound. No stopping and no anchoring zone of 0.5 NM except for diving and fishing vessels. All year round and at all times.

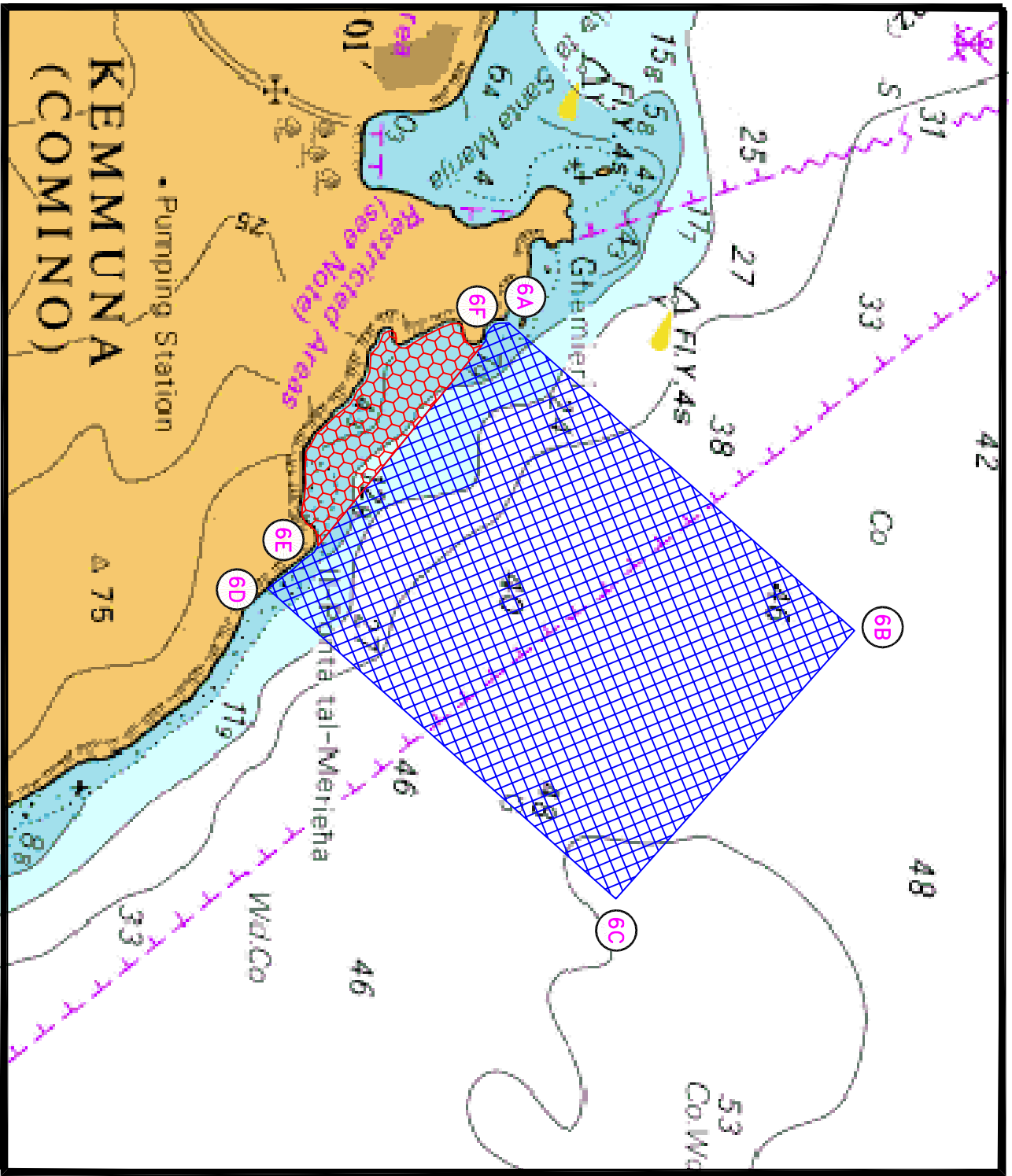


Chart 6

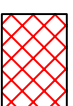
© British Crown Copyright 1970, 1983, 1986, 1988, 1999, 2000  
All rights reserved.

The UK Hydrographic Office makes the accompanying data  
Available to Malta Maritime Authority (Transport Malta)  
Under the terms and conditions of agreement HO 1427/020930/01.

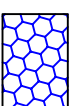
#### DISCLAIMER

Whilst the UK Hydrographic Office has endeavoured to ensure  
That the material supplied is suitable for the purpose described,  
It accepts no liability (to the maximum extent permitted by law)  
For any damage or loss of any nature arising from its use.  
The material supplied is used entirely at the Recipient's own risk.

## St. Paul's Island



Maximum speed of 5 kn.  
Only compulsory lights  
and sound. All year  
round and at all times.



Only compulsory lights  
and sound. All year  
round and at all times.

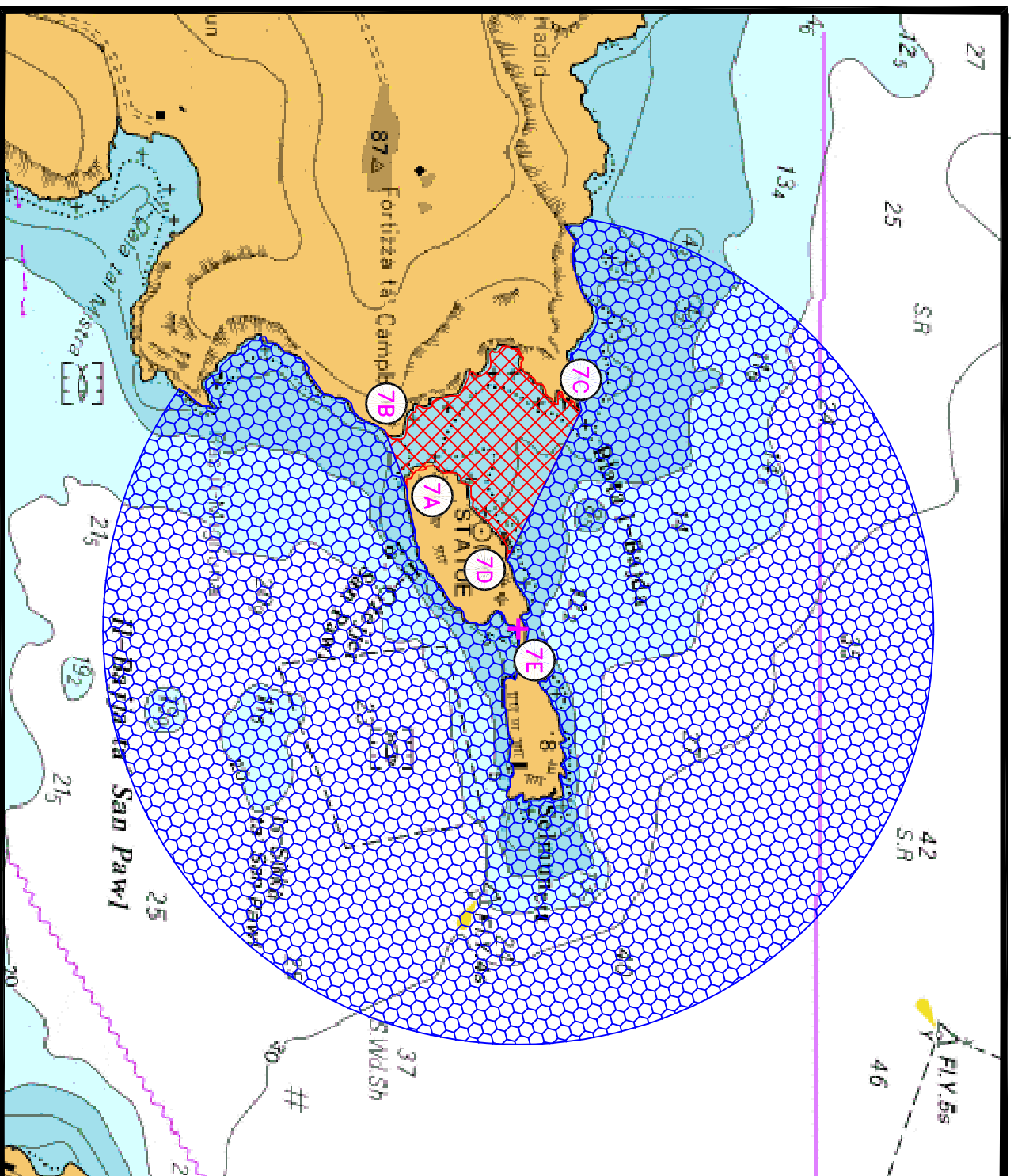


Chart 7

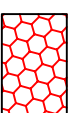
© British Crown Copyright 1970, 1983, 1986, 1988, 1999, 2000  
All rights reserved.

The UK Hydrographic Office makes the accompanying data  
Available to Malta Maritime Authority (Transport Malta)  
Under the terms and conditions of agreement HO 1427/020930/01.

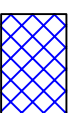
**DISCLAIMER**

Whilst the UK Hydrographic Office has endeavoured to ensure  
That the material supplied is suitable for the purpose described,  
It accepts no liability (to the maximum extent permitted by law)  
For any damage or loss of any nature arising from its use.  
The material supplied is used entirely at the Recipient's own risk.

## Ta' Cenc



All transiting traffic  
to maintain a minimum  
distance of 100m. All  
year round and at all  
times.



Maximum speed of 10 kn.  
Only compulsory lights  
and sound. All year  
round and at all times.

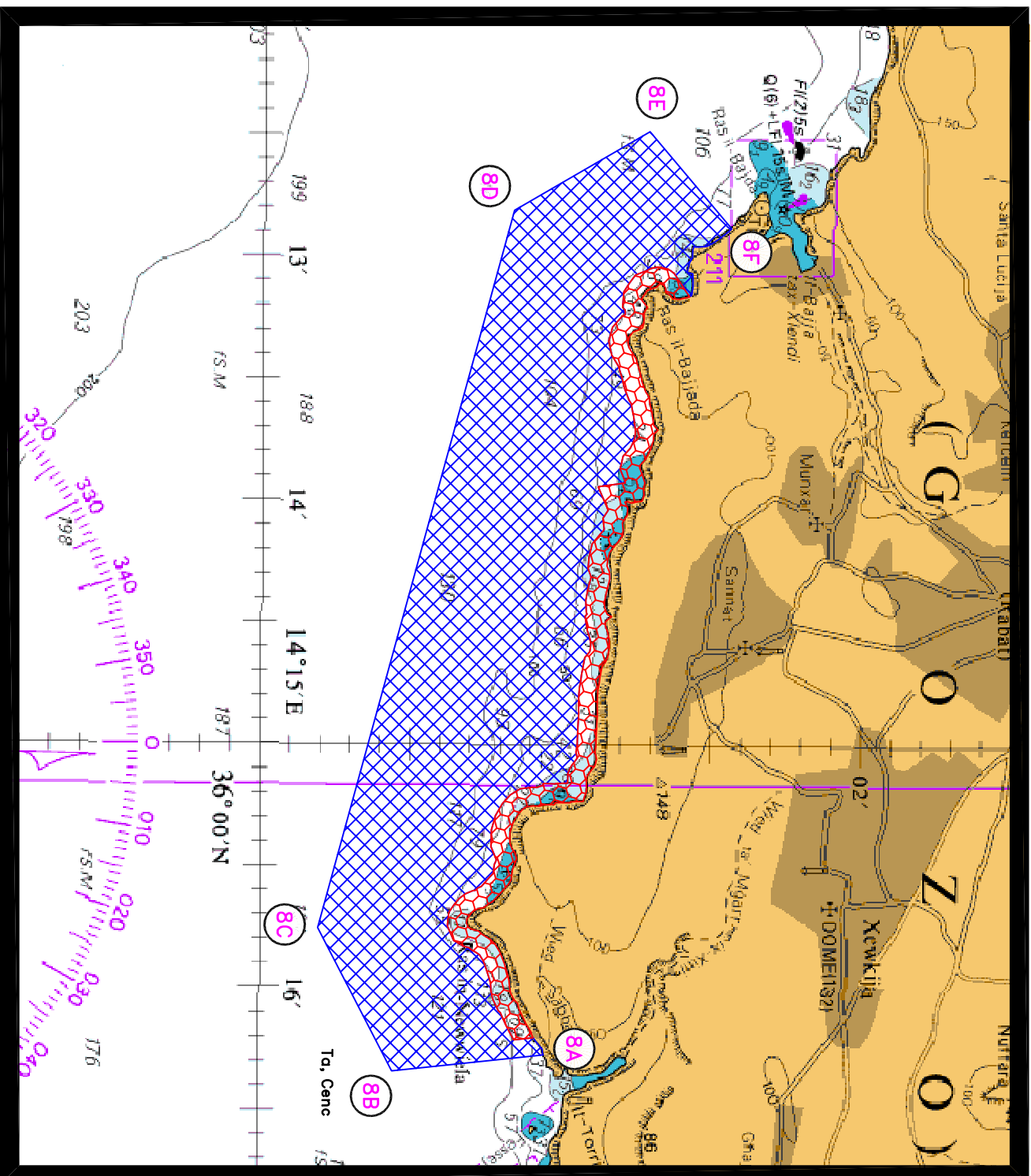


Chart 8