



PORTS AND YACHTING DIRECTORATE

LOCAL NOTICE TO MARINERS No 197 of 2022

Our Ref: **TM/PYD/132/89**

08 November 2022



Transport Malta

Malta Transport Centre,
Triq Pantar, Hal Lija, LJA 2021
Malta

Tel: (356) 2122 2203
Fax: (356) 2125 0365
Email: info.tm@transport.gov.mt

www.transport.gov.mt

Filming from Rinella - Malta Film Studios and within the Grand Harbour and Marsamxett Harbour - 1923

The Ports and Yachting Directorate, Transport Malta, notifies all mariners and sea vessel operators that filming activities will take place from Rinella - Malta Film Studios and within the Grand Harbour and Marsamxett Harbour as listed below.

From Rinella – Malta Film Studios.

On Wednesday 16 th November 2022	between 1200 hours and 2230 hours,
on Thursday 17 th November 2022	between 1100 hours and 2130 hours,
on Friday 18 th November 2022	between 1030 hours and 2100 hours,
on Monday 21 st November 2022	between 0630 hours and 1700 hours,
on Tuesday 22 nd November 2022	between 0630 hours and 1700 hours and
on Thursday 24 th November 2022	between 0630 hours and 1500 hours.

During these days and times, for filming purposes, a clear horizon from point A, as shown on the attached chart, is being requested. Consequently, vessels transiting the hatched sector, shall, except in the case of emergency, not drop anchor or remain underway.

From Rinella Bay, Kalkara.

On Thursday 24th November 2022 between 1100 hours and 1700 hours.

During this day and time, for filming purposes, a clear background from point B, as shown on the attached chart, is being requested. Consequently, vessels transiting the hatched sector, shall, except in the case of emergency, not moor, drop anchor or remain underway.

Filming will also be carried out in Id-Daħla ta' Rinella, shown in blue on the attached chart, hence it is to be kept clear from all vessels and no vessel will be allowed to enter or berth alongside any quay or jetty within the area.



Transport Malta

No liability whatsoever will be accepted by the Authority for any damage that may be caused while removing any vessels that may be found within the area, on the above-mentioned date and times. Any costs incurred for the removal of vessels from the area will be at the owners' expense.

From Fort Manoel in Marsamxett Harbour.

On Friday 25th November 2022 between 0630 hours and 1500 hours.

During this day and time, for filming purposes, a clear background is being requested from point C, as shown on the attached chart. Consequently, vessels transiting the hatched sector, shall, except in the case of emergency, not moor, drop anchor or remain underway.

From Pixkerija area and Barriera Wharf.

On Saturday 26th November 2022 between 0630 hours and 1700 hours.

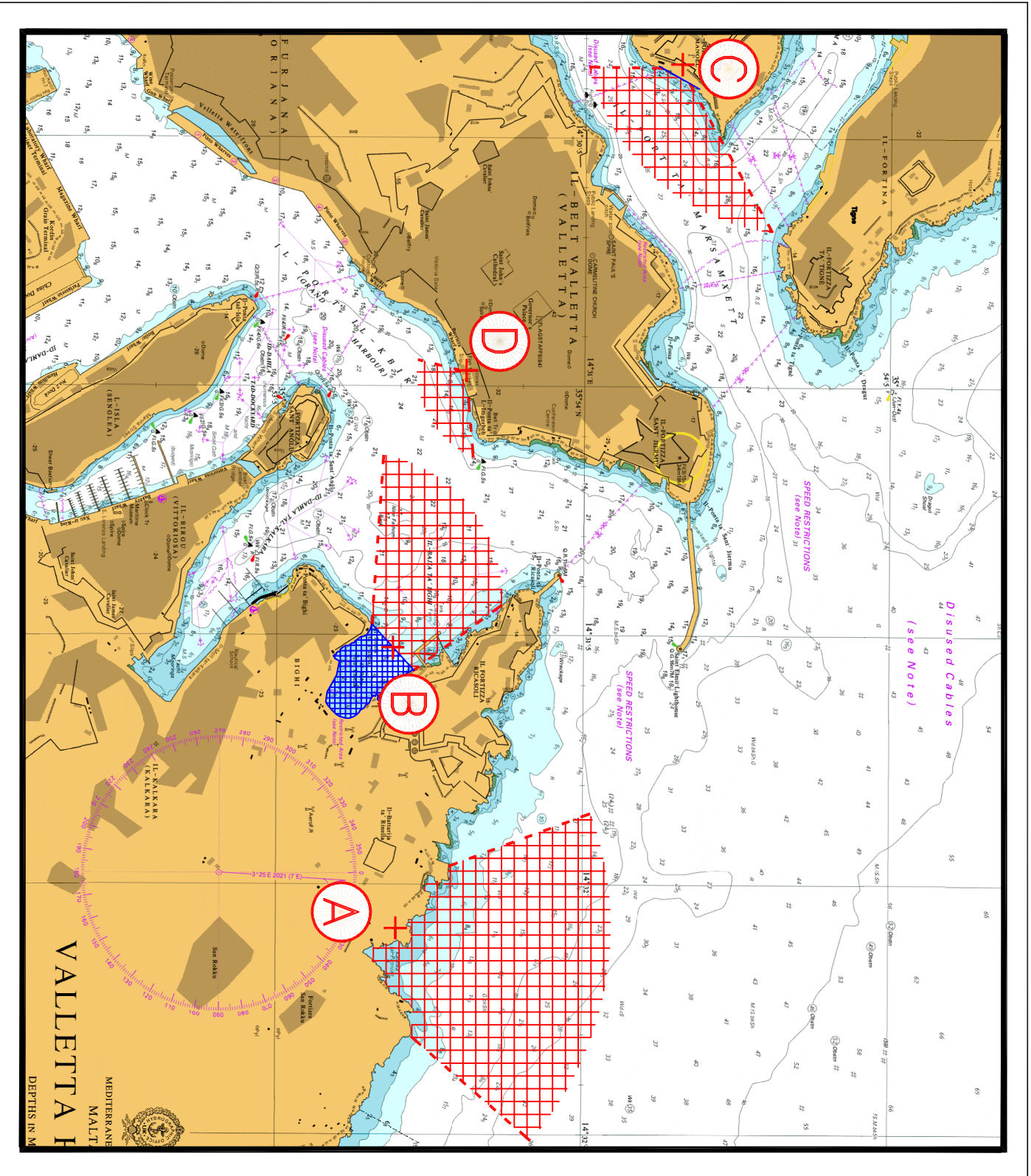
During this day and time, for filming purposes, a clear background is being requested from point D, as shown on the attached chart. Consequently, vessels transiting the hatched sector, shall, except in the case of emergency, not moor, drop anchor or remain underway.

From Monday 14th November 2022 to Monday 28th November 2022 no vessel will be allowed to berth alongside the quay next to Pixkerija and at Barriera Wharf. Only the 2 barges being used for filming will be allowed to berth alongside the quay next to Pixkerija and at Barriera Wharf.

Mariners navigating in the vicinity of the indicated area on the mentioned dates and times are to keep watch on VHF Channel **12 / 16** and are to cooperate with the filming crew and/or enforcement personnel in the area.

Any instructions issued on VHF channel **12 / 16** by Valletta VTS are to be complied with.

Charts affected: **BA 177, 2537, 2538**



© British Crown Copyright 1970, 1983, 1986, 1988, 1999, 2000
 All rights reserved.

The UK Hydrographic Office makes the accompanying data
 Available to Malta Maritime Authority (Transport Malta)
 Under the terms and conditions of agreement HO 1427/020930/01.

DISCLAIMER

Whilst the UK Hydrographic Office has endeavoured to ensure
 That the material supplied is suitable for the purpose described,
 It accepts no liability (to the maximum extent permitted by law)
 For any damage or loss of any nature arising from its use.
 The material supplied is used entirely at the Recipient's own risk.