



PORTS AND YACHTING DIRECTORATE

Transport Malta

LOCAL NOTICE TO MARINERS No 169 of 2022

Our Ref: **TM/PYD/83/97**

Malta Transport Centre
Marsa, MRS 1917
Malta

Tel: (356) 2122 2203
Fax: (356) 2125 0365
Email: info.tm@transport.gov.mt

www.transport.gov.mt

26th September 2022

Roberts Cup – Como to Malta Seaplane Rally - 2022

The Ports and Yachting Directorate, Transport Malta, notifies that the Malta Seaplanes Association in collaboration with Aero Club Como will be organising the Roberts Cup – Como to Malta Seaplanes Rally between Friday 30th September 2022 and Sunday 2nd October 2022. Part of the rally will be held in the Grand Harbour, Qalet Marku and il-Fliegu ta' Kemmuna.

The flying displays over the Grand Harbour will be held as follows:

Friday 30 th September 2022	between 1600 hours and 1700 hours
Saturday 1 st October 2022	between 1000 hours and 1300 hours
Sunday 2 nd October 2022	between 1000 hours and 1300 hours

The flying displays over Qalet Marku and il-Fliegu ta' Kemmuna will be held as follows:

Saturday 1 st October 2022	between 1500 hours and 1700 hours
Sunday 2 nd October 2022	between 1500 hours and 1700 hours

All timings are in Local Time.

The displays will consist mainly of landing and take-off maneuvers and will be held within the area A, B, C and D, as shown hatched in magenta on the attached charts. Mariners are hereby informed that during the dates and times mentioned above traffic movements may be restricted.

Valletta Port Control (Valletta VTS) will be managing the movement of vessels, on VHF channel 12 with respect to the Grand Harbour.

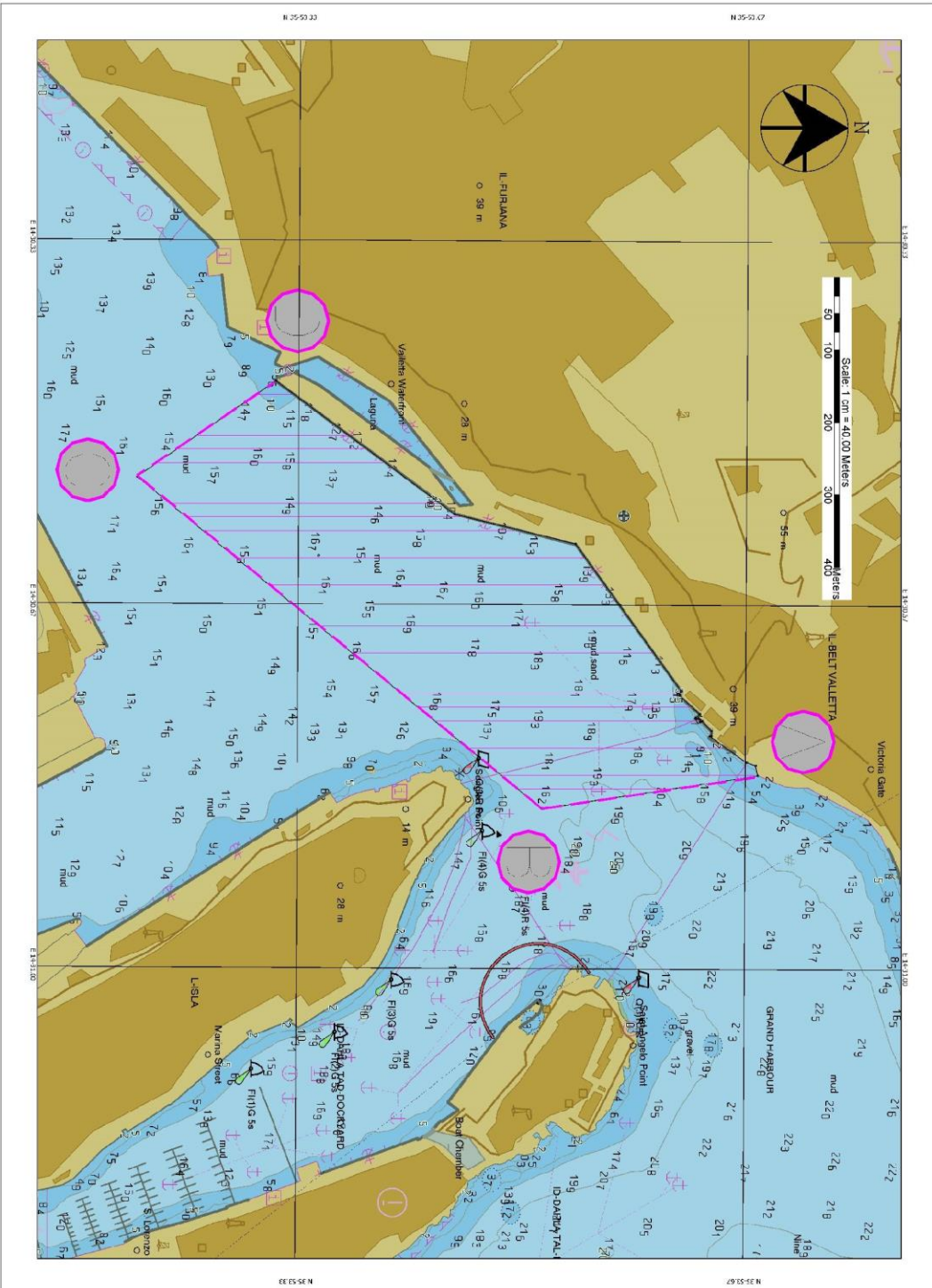
Mariners are to navigate with caution and to keep a sharp lookout when in the vicinity to the above-mentioned area. They are to obey any instructions that are issued by Valletta Port Control (Valletta VTS) on VHF channel 12, and Maritime Enforcement vessels in the area.

Positions are in WGS 84 Datum.

Chart affected: BA Charts 211A, 177, 2538.



Transport Malta



Transport Malta

Roberts Cup Course to Malta Seaplane Rally 2022
Point A: 35 53 07N, 14 30 297E
Point B: 35 53 10N, 14 30 282E
Point C: 35 53 24N, 14 30 550E
Point D: 35 53 31N, 14 30 465E
Positions are at WGS84 Datum



Transport Malta

