



PORTS AND YACHTING DIRECTORATE

## NOTICE TO MARINERS No 33 of 2022

Our Ref: **TM/PYD/70/02**

22 August 2022



**Transport Malta**

Malta Transport Centre,  
Triq Pantar, Hal Lija, LJA 2021  
Malta

Tel: (356) 2122 2203  
Fax: (356) 2125 0365  
Email: [info.tm@transport.gov.mt](mailto:info.tm@transport.gov.mt)

[www.transport.gov.mt](http://www.transport.gov.mt)

### Survey for proposed cable route for second interconnector - Offshore

The Ports and Yachting Directorate, Transport Malta, notifies mariners that several types of investigative surveys will be carried out for the proposed second interconnector between Malta and Sicily.

These investigative surveys will be carried out by the vessel *“Urbano Monti”* and her ancillary equipment.

Weather permitting the surveys are planned to commence on Wednesday 24<sup>th</sup> August 2022 (on the Sicily side) and are expected to be completed by Monday 10<sup>th</sup> October 2022.

The route between the limit of the Malta Continental Shelf point G and where it meets the inshore part (off Ras il-Għallis) point A, will be along the following coordinates:

Turning Point	Latitude (N)	Longitude (E)
A (off Ras il-Għallis)	35° 57'.854	014° 26'.882
B	36° 00'.401	014° 28'.156
C	36° 02'.402	014° 28'.519
D	36° 05'.581	014° 26'.774
E	36° 14'.059	014° 31'.963
F	36° 16'.591	014° 32'.152
G (Malta – Continental Shelf)	36° 22'.767	014° 31'.742

Since the vessel will be towing different types of equipment and, may at times be stationery, she will be restricted in her ability to manoeuvre.

Appropriate signals in accordance with the Regulations for the Prevention of Collisions at sea (COLREGS) and the International Code of Signals, will be exhibited accordingly.

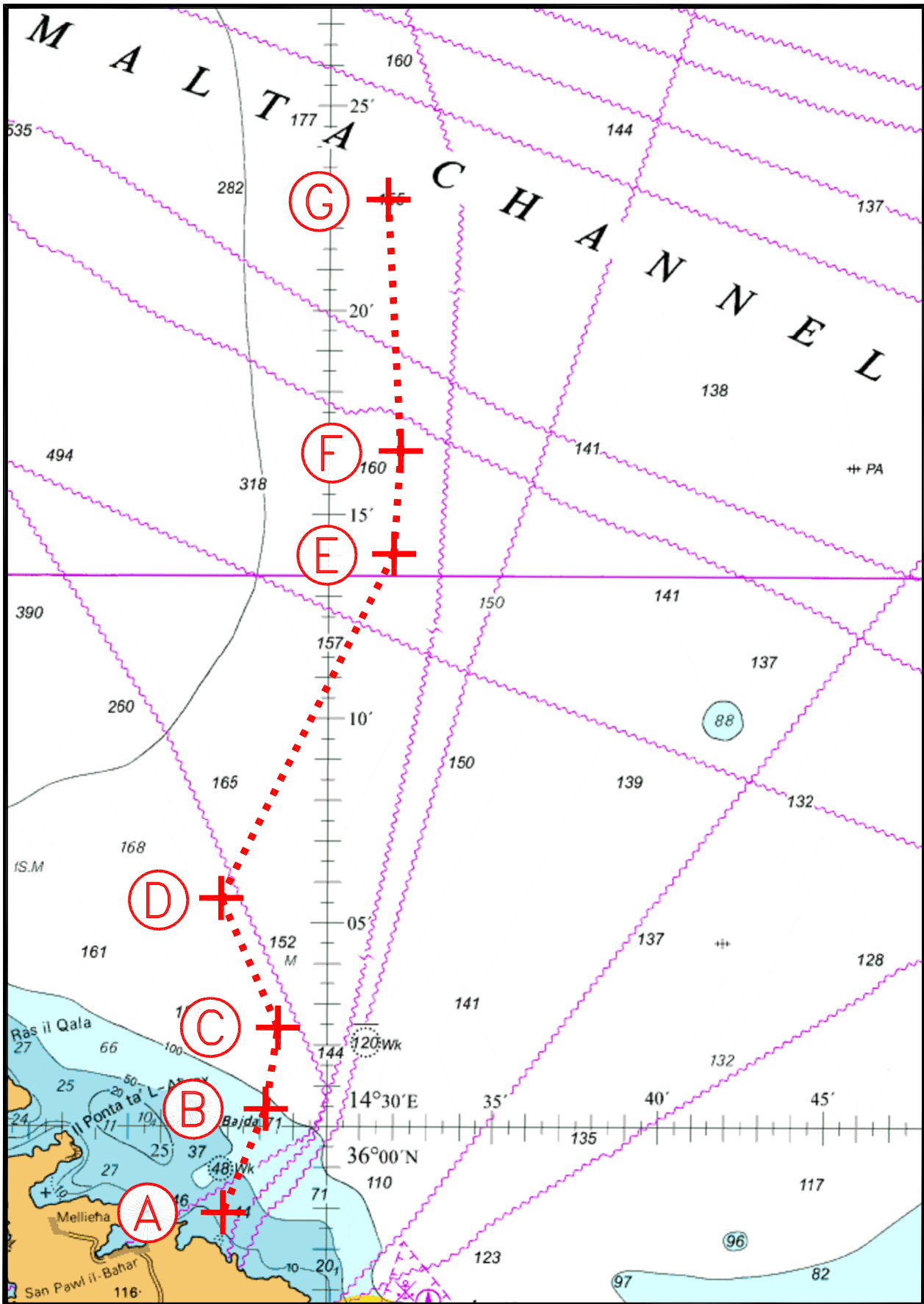


**Transport Malta**

Mariners are instructed to navigate with caution and to maintain a safe distance of 0.75 Nautical Miles from the vessel "*Urbano Monti*" when it is detected or sighted.

When crossing the channel between Sicily and Malta, all vessels are to comply with any instructions given on VHF channel 69 and/or 16 by Malta Coastal Station (Malta VTS) and on VHF channel 12 by Valletta VTS.

Charts Affected: **BA 194, 2123, 2124, 2537, 2538 and Int. 301**



© British Crown Copyright 1970, 1983, 1986, 1988, 1999, 2000  
 All rights reserved.

The UK Hydrographic Office makes the accompanying data  
 Available to Malta Maritime Authority (Transport Malta)  
 Under the terms and conditions of agreement HO 1427/020930/01.

DISCLAIMER

Whilst the UK Hydrographic Office has endeavoured to ensure  
 That the material supplied is suitable for the purpose described,  
 It accepts no liability (to the maximum extent permitted by law)  
 For any damage or loss of any nature arising from its use.  
 The material supplied is used entirely at the Recipient's own risk.