



PORTS AND YACHTING DIRECTORATE

LOCAL NOTICE TO MARINERS No 119 of 2022

Our Ref: **TM/PYD/70/02**

15 July 2022



Transport Malta

Malta Transport Centre,
Triq Pantar, Hal Lija, LJA 2021
Malta

Tel: (356) 2122 2203
Fax: (356) 2125 0365
Email: info.tm@transport.gov.mt

www.transport.gov.mt

Survey (Sub-bottom profiler) off Ix- Xatt I-Aħmar in Gozo

The Ports and Yachting Directorate, Transport Malta, notifies mariners that a survey will be carried out with the use of a Sub-bottom Profiler (SBP). This survey will be carried out by the vessel “*MV Wilfred*” and her ancillary equipment.

Weather permitting the survey is planned to be carried out between Tuesday 19th July 2022 and Friday 29th July 2022, within the area A, B, C and D as shown on the attached chart:

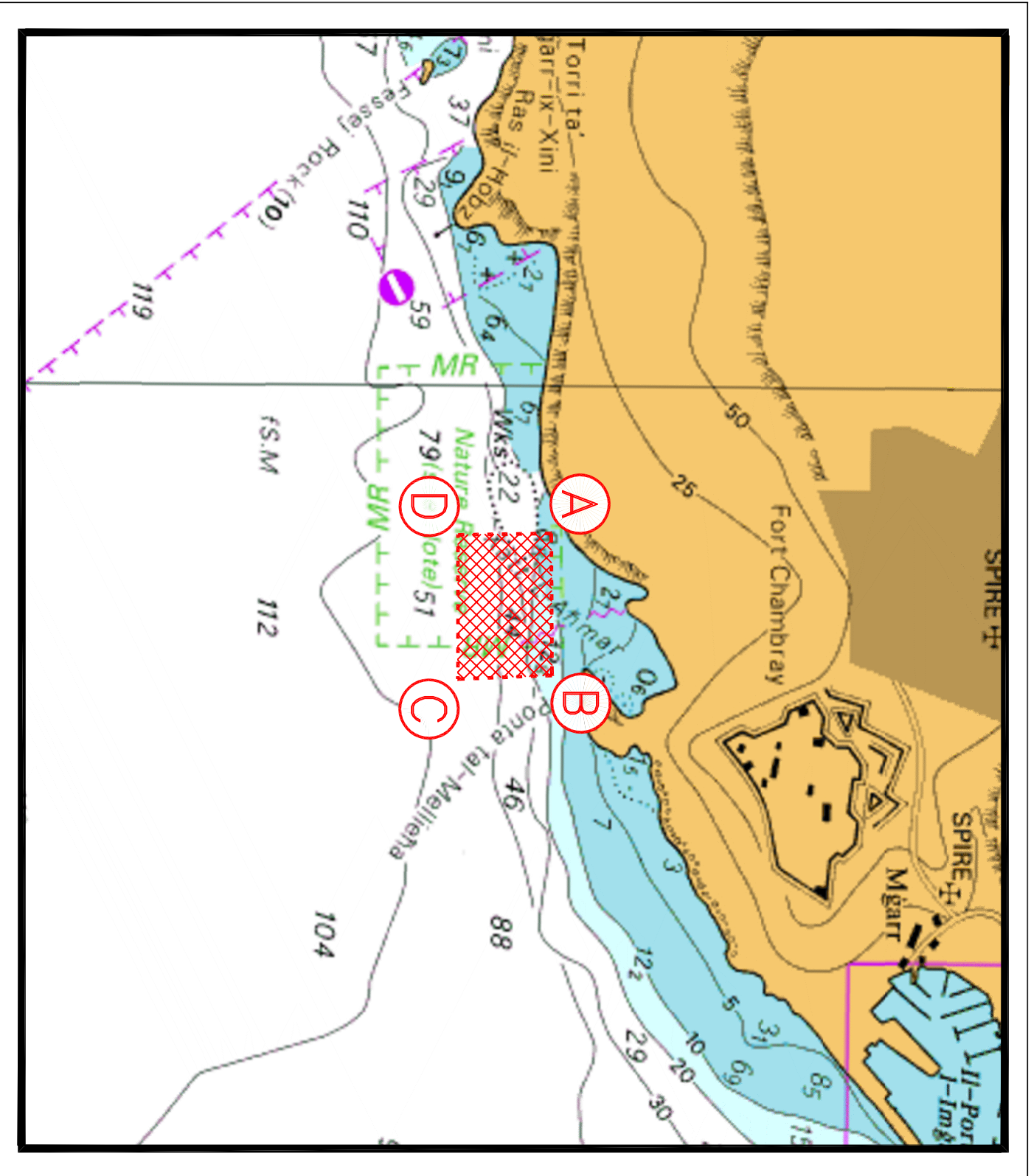
	Latitude (N)	Longitude (E)
A	36° 01'.060	14° 17'.208
B	36° 01'.062	14° 17'.405
C	36° 00'.956	14° 17'.411
D	36° 00'.955	14° 17'.211

Since the vessel “*MV Wilfred*” will be deploying an SBP, she will be restricted in her ability to manoeuvre and will be displaying the appropriate signals in compliance with the International Regulations for the Prevention of Collisions at sea.

Mariners are instructed to navigate with caution when the above-mentioned vessel is sighted and shall maintain a safe distance of 100m from the vessels.

Mariners are also notified to abide by any instructions issued by Valletta Port Control, (Valletta VTS) on VHF Channel 12.

Charts Affected: **BA 211, 2537**



© British Crown Copyright 1970, 1983, 1986, 1988, 1999, 2000
 All rights reserved.

The UK Hydrographic Office makes the accompanying data
 Available to Malta Maritime Authority (Transport Malta)
 Under the terms and conditions of agreement HO 1427/020930/01.

DISCLAIMER

Whilst the UK Hydrographic Office has endeavoured to ensure
 That the material supplied is suitable for the purpose described,
 It accepts no liability (to the maximum extent permitted by law)
 For any damage or loss of any nature arising from its use.
 The material supplied is used entirely at the Recipient's own risk.