



PORTS AND YACHTING DIRECTORATE

LOCAL NOTICE TO MARINERS No 099 of 2022

Our Ref: **TM/PYD/22/01 VI**

27 June 2022



Transport Malta

Malta Transport Centre,
Triq Pantar, Hal Lija, LJA 2021
Malta

Tel: (356) 2122 2203
Fax: (356) 2125 0365
Email: info.tm@transport.gov.mt

www.transport.gov.mt

Fireworks Display - Feast of Our Lady of Mount Carmel - Valletta

The Ports and Yachting Directorate, Transport Malta, notifies mariners that fireworks display in connection with the feast of Our Lady of Mount Carmel will be let off from beneath St Gregory Bastions, Valletta from point A (as shown on attached chart) on the following date and times:-

POSITION	LATITUDE (N)	LONGITUDE (E)
A	35° 54'.204	014° 31'.039

Friday 1st July 2022 from 0800 hours until 0810 hours,
from 1200 hours until 1210 hours and
from 2000 hours until 2030 hours.

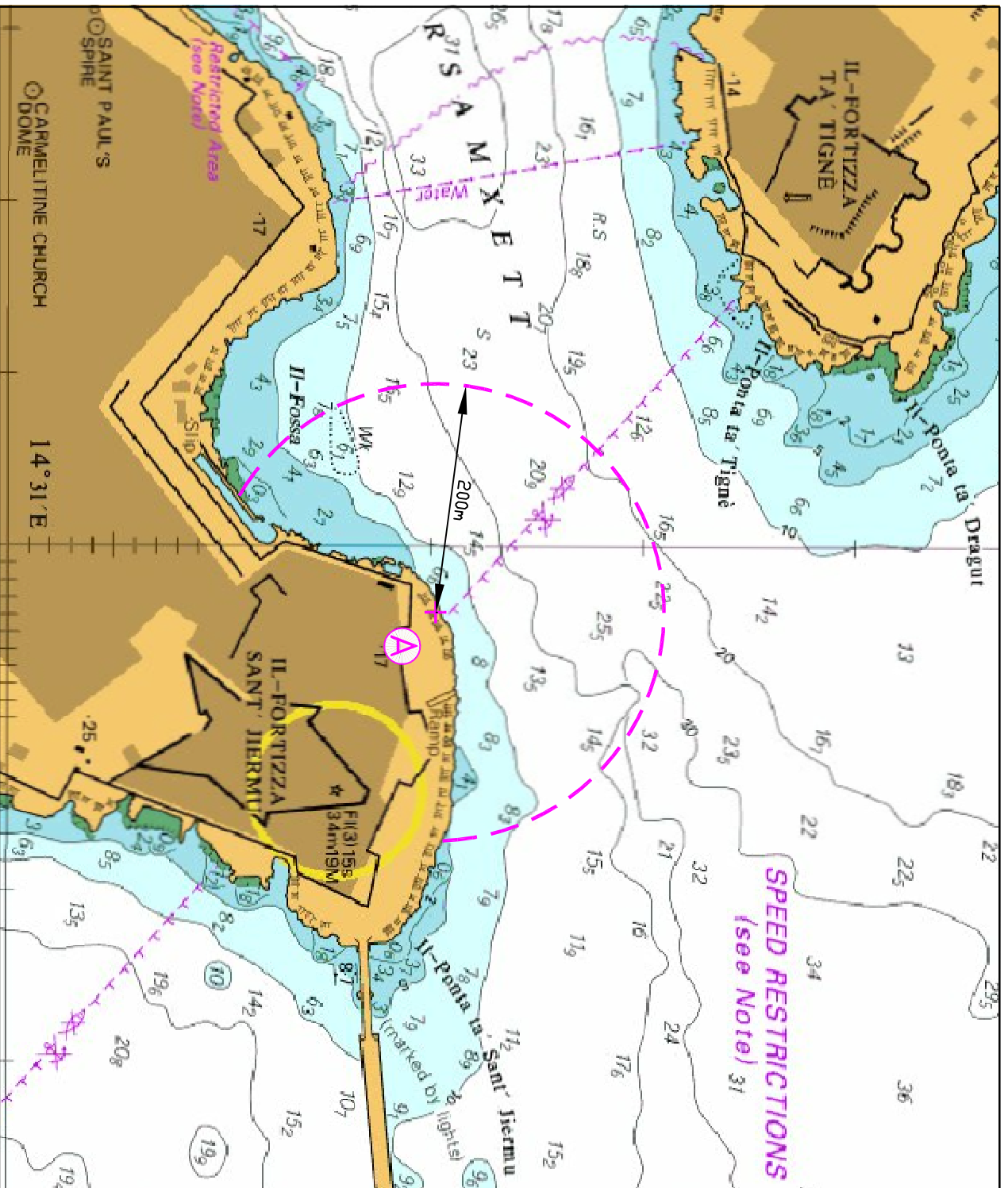
Friday 15th July 2022 from 1130 hours until 1200 hours,
from 1930 hours until 2030 hours and
from 2145 hours until 2215 hours.

Saturday 16th July 2022 from 0800 hours until 0810 hours,
from 1200 hours until 1210 hours and
from 1930 hours until 2000 hours.

Mariners are to keep a safe distance of at least 200 metres from the position indicated. They are also to maintain a wide berth and to comply with any instructions given on VHF Channel 12 and/or 16, by Valletta VTS, while entering and navigating between Marsamxett Harbour and Grand Harbour.

Positions referred to WGS 84 DATUM.

Chart effected: **BA Chart 177**



© British Crown Copyright 1970, 1983, 1986, 1988, 1999, 2000
 All rights reserved.

The UK Hydrographic Office makes the accompanying data
 Available to Malta Maritime Authority (Transport Malta)
 Under the terms and conditions of agreement HO 1427/020930/01.

DISCLAIMER

Whilst the UK Hydrographic Office has endeavoured to ensure
 That the material supplied is suitable for the purpose described,
 It accepts no liability (to the maximum extent permitted by law)
 For any damage or loss of any nature arising from its use.
 The material supplied is used entirely at the Recipient's own risk.