



PORTS AND YACHTING DIRECTORATE

LOCAL NOTICE TO MARINERS No 088 of 2022

Our Ref: **TM/PYD/63/95**

16 June 2022



Transport Malta

Malta Transport Centre,
Triq Pantar, Hal Lija, LJA 2021
Malta

Tel: (356) 2122 2203
Fax: (356) 2125 0365
Email: info.tm@transport.gov.mt

www.transport.gov.mt

Diving Survey on the Comino – Cirkewwa Pipeline, Comino Channel

The Ports and Yachting Directorate, Transport Malta, notifies mariners and owners of vessels that a diving survey will be held within Comino Channel.

The diving survey will be held on Friday 17th June 2022 between 0900 hours and 1400 hours, within the area formed by the imaginary lines joining A to B and C to D and the intermediate coastline, as shown in red on the attached chart.

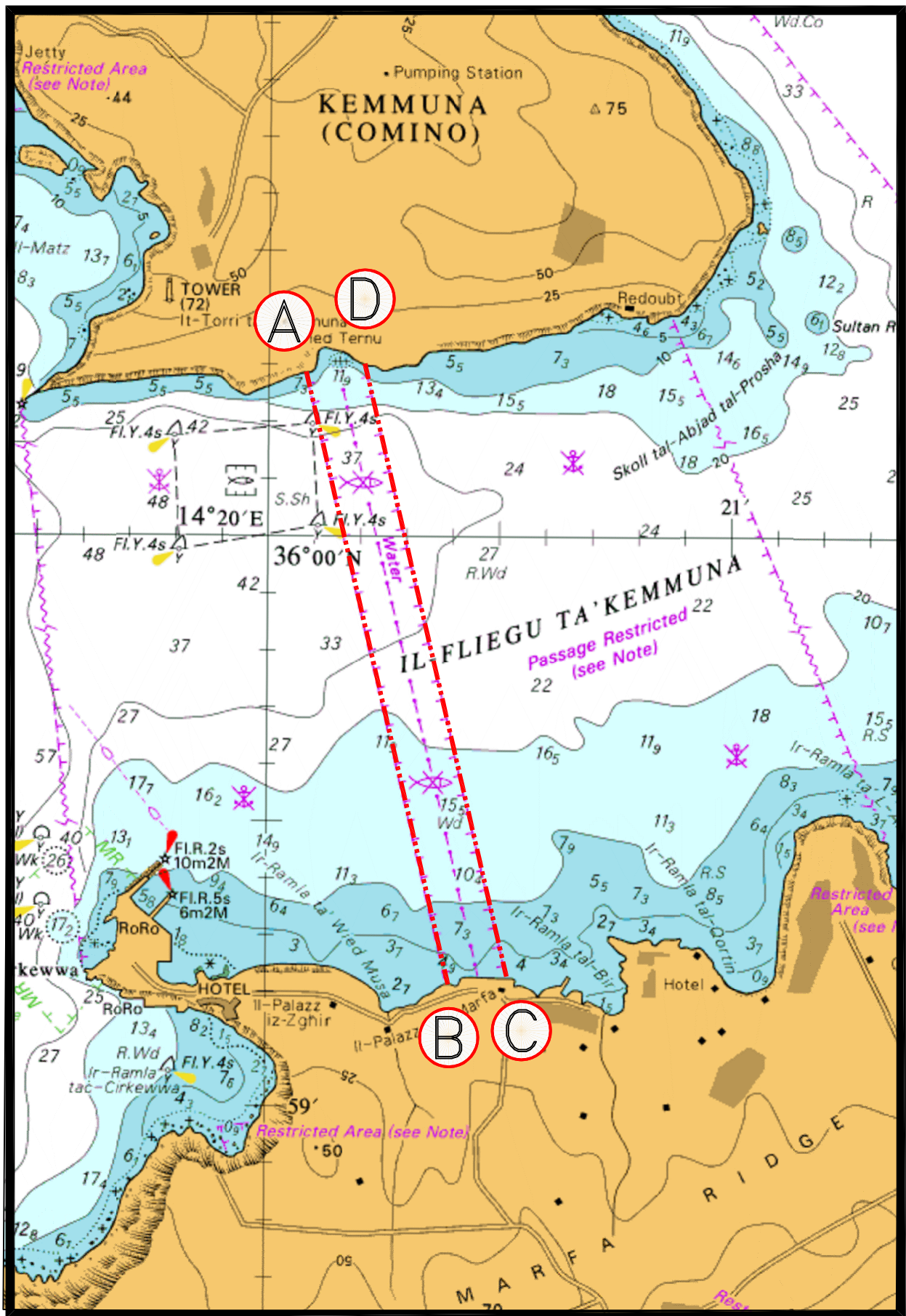
Position	Latitude (N)	Longitude (E)
A	36° 00'.281	014° 20'.085
B	35° 29'.230	014° 20'.525
C	36° 00'.301	014° 20'.206
D	35° 59'.221	014° 20'.392

The survey will be carried out by scuba divers who will be accompanied by the support vessel "*Mare Rosa*" which will be displaying the International Code of Signals flag "A".

A safety zone of 100m round the support vessel "*Mare Rosa*" is to be kept during the surveys.

Masters and operators of vessels are advised to keep a sharp lookout, proceed with caution and at slow speed when navigating in the above indicated areas. They are to comply with instructions given on VHF Channel 12 and/or 16 by Valletta VTS.

Chart affected: **BA 211**



© British Crown Copyright 1970, 1983, 1986, 1988, 1999, 2000
All rights reserved.

The UK Hydrographic Office makes the accompanying data
Available to Malta Maritime Authority (Transport Malta)
Under the terms and conditions of agreement HO 1427/020930/01.

DISCLAIMER

Whilst the UK Hydrographic Office has endeavoured to ensure
That the material supplied is suitable for the purpose described,
It accepts no liability (to the maximum extent permitted by law)
For any damage or loss of any nature arising from its use.
The material supplied is used entirely at the Recipient's own risk.