



PORTS AND YACHTING DIRECTORATE

LOCAL NOTICE TO MARINERS No 080 of 2022

Our Ref: **TM/PYD/70/02**

1 June 2022



Transport Malta

Malta Transport Centre,
Triq Pantar, Hal Lija, LJA 2021
Malta

Tel: (356) 2122 2203
Fax: (356) 2125 0365
Email: info.tm@transport.gov.mt

www.transport.gov.mt

ROV survey at Sikka il-Bajda - Bunkering Area 1

The Ports and Yachting Directorate, Transport Malta, notifies mariners that a survey will be carried out with the use of a Remotely Operated Vehicle (ROV). This survey will be carried out from the vessel *“Wilfred”*.

Weather permitting, the survey is planned to commence on Wednesday 8th June 2022 and to be completed by not later than Thursday 30th June 2022.

The survey will be carried out daily from 0700 hours to 1700 hours excluding weekends.

The ROV survey will be held within the area A, B, C, D, E, and F, as shown on the attached chart:

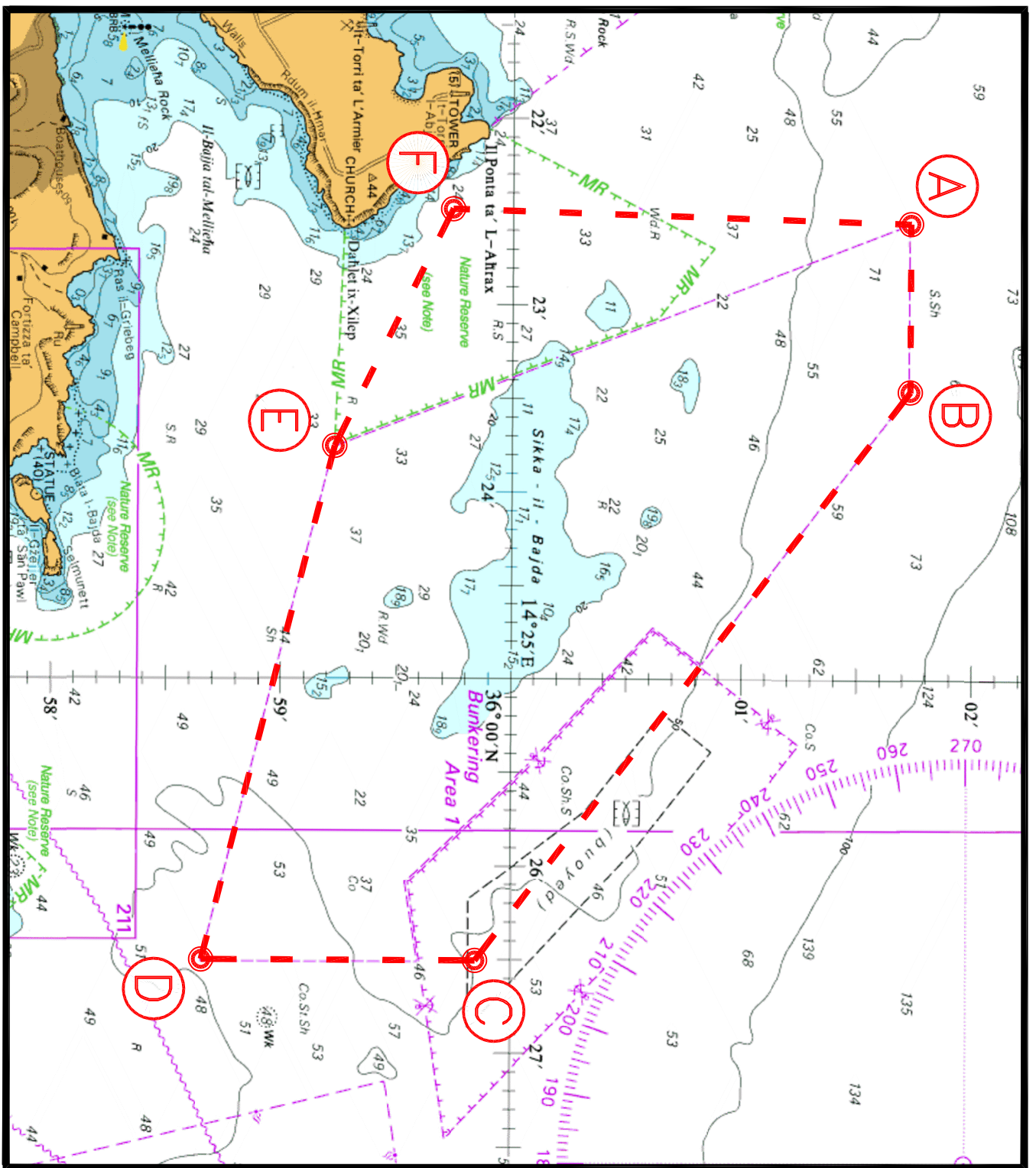
	Latitude (N)	Longitude (E)
A	36° 01'.730	14° 22'.560
B	36° 01'.730	14° 23'.460
C	35° 59'.850	14° 26'.510
D	35° 58'.660	14° 26'.510
E	35° 59'.230	14° 23'.760
F	35° 59'.740	14° 22'.490

Since an ROV will be operated from the vessel *“Wilfred”*, she will be restricted in her ability to manoeuvre and will display, during the survey, the International Code of Signals flag “D”.

Mariners are instructed to navigate with caution when the above-mentioned vessel is sighted, and they are to maintain a safe distance of 100m from the vessel.

All mariners are to comply with any instructions given on VHF Channel 12 and/or 16, by Valletta VTS and by any Enforcement Personnel on site.

Charts Affected: **BA 211, 2537, 2538**



© British Crown Copyright 1970, 1983, 1986, 1988, 1999, 2000
All rights reserved.

The UK Hydrographic Office makes the accompanying data
Available to Malta Maritime Authority (Transport Malta)
Under the terms and conditions of agreement HO 1427/020930/01.

DISCLAIMER

Whilst the UK Hydrographic Office has endeavoured to ensure
That the material supplied is suitable for the purpose described,
it accepts no liability (to the maximum extent permitted by law)
For any damage or loss of any nature arising from its use.
The material supplied is used entirely at the Recipient's own risk.