



PORTS AND YACHTING DIRECTORATE

LOCAL NOTICE TO MARINERS No 037 of 2022

Our Ref: **TM/PYD/22/01 Vol VI**

13 April 2022



Transport Malta

Malta Transport Centre,
Triq Pantar, Hal Lija, LJA 2021
Malta

Tel: (356) 2122 2203
Fax: (356) 2125 0365
Email: info.tm@transport.gov.mt

www.transport.gov.mt

Malta International Fireworks Festival 2022

The Ports and Yachting Directorate, Transport Malta, notifies mariners that firework displays will be held in different localities and dates as shown below.

On Thursday, 14th April 2022 in the morning, 2 barges will be shifted to Kalkara quay to be loaded with concrete blocks, sinkers and anchors. Later in the afternoon, the barges will be shifted to Cirkewwa South quay.

Owners of vessels moored in Rinella Bay are to remove their vessels and the area is to remain clear on Thursday 14th April 2022 from early morning until 1300. Transport Malta will accept no liabilities whatsoever for any damage caused to vessels that are left within Rinella Bay on the mentioned dates and times.

Il-Bajja tal-Mellieħa on Wednesday 20th April 2022.

At 0600 hours the pontoons and barges will be shifted from Cirkewwa South quay to Il-Bajja tal-Mellieħa.

By 1100 hours the setting up of the pontoons and barges will commence. The barges and pontoons will be moored in the following positions, as shown on the attached chart 1.

The pontoons will be moored along the imaginary line 1 to 2 and a barge will be moored at points 3 and another at point 4.

Position	Latitude (N)	Longitude (E)
1	35° 58'.206	014° 21'.087
2	35° 58'.122	014° 21'.149
3	35° 58'.235	014° 21'.260
4	35° 58'.314	014° 21'.243



The display will start at 2000 hours and finish by 2300 hours.

After the display pontoons and barges will be towed back to Cirkewwa South quay and the sinkers and anchors lifted from the bottom.

Il-Bajja ta' Hondoq ir-Rummien on Sunday 23rd April 2022.

At 0600 hours the pontoons and barges will be shifted from Cirkewwa South quay to Il-Bajja ta' Hondoq ir-Rummien, Qala. By 1100 hours the setting up of the pontoons and barges will commence and will be moored in the following positions, as shown on the attached chart 2.

The pontoons will be moored along the imaginary line 5 to 6 and a barge will be laid at points 7 and another at 8.

Position	Latitude (N)	Longitude (E)
5	36° 01'.647	014° 19'.496
6	36° 01'.591	014° 19'.395
7	36° 01'.529	014° 19'.519
8	36° 01'.449	014° 19'.464

The display will start at 2000 hours and finish by 2300 hours.

After the display the pontoons and barges will be towed back to Kalkara quay and the sinkers and anchors will be lifted off the bottom.

Vessels engaged on the HSC fast ferry route, between Malta and Gozo, are to navigate through the Comino channel on this day.

Il-Bajja ta' San Tumas on Friday 26th April 2022.

At 0600 hours the pontoons and barges will be shifted from Kalkara quay to Il-Bajja ta' San Tumas, Marsasala.

By 1100 hours the setting up of the pontoons and barges will commence. The pontoons and barges will be moored in the following positions, as shown on the attached chart 3.

The pontoons will be moored along the imaginary line 9 to 10 and a barge will be moored at points 11 and another at point 12.



Position	Latitude (N)	Longitude (E)
9	35° 51'.295	014° 34'.145
10	35° 51'.229	014° 34'.056
11	35° 51'.139	014° 34'.097
12	35° 51'.164	014° 34'.212

The display will start at 2000 hours and finish by 2300 hours.

After the display the pontoons and barges will be towed back to Kalkara quay, and the sinkers and anchors removed.

The Grand Harbour, Valletta on Saturday 30th April 2022.

At 1500 hours the positioning of the anchors for the pontoons and barge will commence.

At 1600 hours the pontoons and one barge will be shifted from Kalkara quay to their positions. They will be set up in the following positions, as shown on the attached chart 4.

There will be 3 rows of pontoons moored along the imaginary lines 13 to 14, 16 to 17 and 18 to 19 and a barge will be moored at point 15.

Position	Latitude (N)	Longitude (E)
13	35° 53'.746	014° 31'.156
14	35° 53'.565	014° 30'.857
15	35° 53'.677	014° 30'.988
16	35° 53'.775	014° 31'.075
17	35° 53'.635	014° 30'.846
18	35° 53'.751	014° 31'.007
19	35° 53'.682	014° 30'.894

The display will start at 2000 hours and finish by 2215 hours.

After the display the pontoons and the barge will be towed back to Kalkara quay. The sinkers and anchors will be removed, and the area cleared by 2250 hours.

The pontoons and barge will then be left at Kalkara quay up to Monday 2nd May 2022.



Transport Malta

In view of the above, mariners are informed that part of Grand Harbour, between the imaginary lines A - B, C - D, E – F, G – H, I – J, and the intermediate coastline (as shown on attached chart 4), will be closed to all vessels.

The port closure and prohibited area will be effective on Saturday 30th April 2022 from 1500 hours to 2250 hours local Time (1100 hours to 2100 hours UTC), except for authorised vessels.

Position	Latitude (N)	Longitude (E)
A	35° 53'.590	014° 30'.699
B	35° 53'.458	014° 30'.831
C	35° 53'.417	014° 30'.937
D	35° 53'.512	014° 31'.031
E	35° 53'.541	014° 31'.155
F	35° 53'.545	014° 31'.359
G	35° 53'.653	014° 31'.479
H	35° 53'.840	014° 31'.112
I	35° 54'.143	014° 31'.221
J	35° 53'.963	014° 31'.376

During the event shipping movements in Grand Harbour will be restricted. Authorized vessels **MUST** be securely moored by not later than 1930.

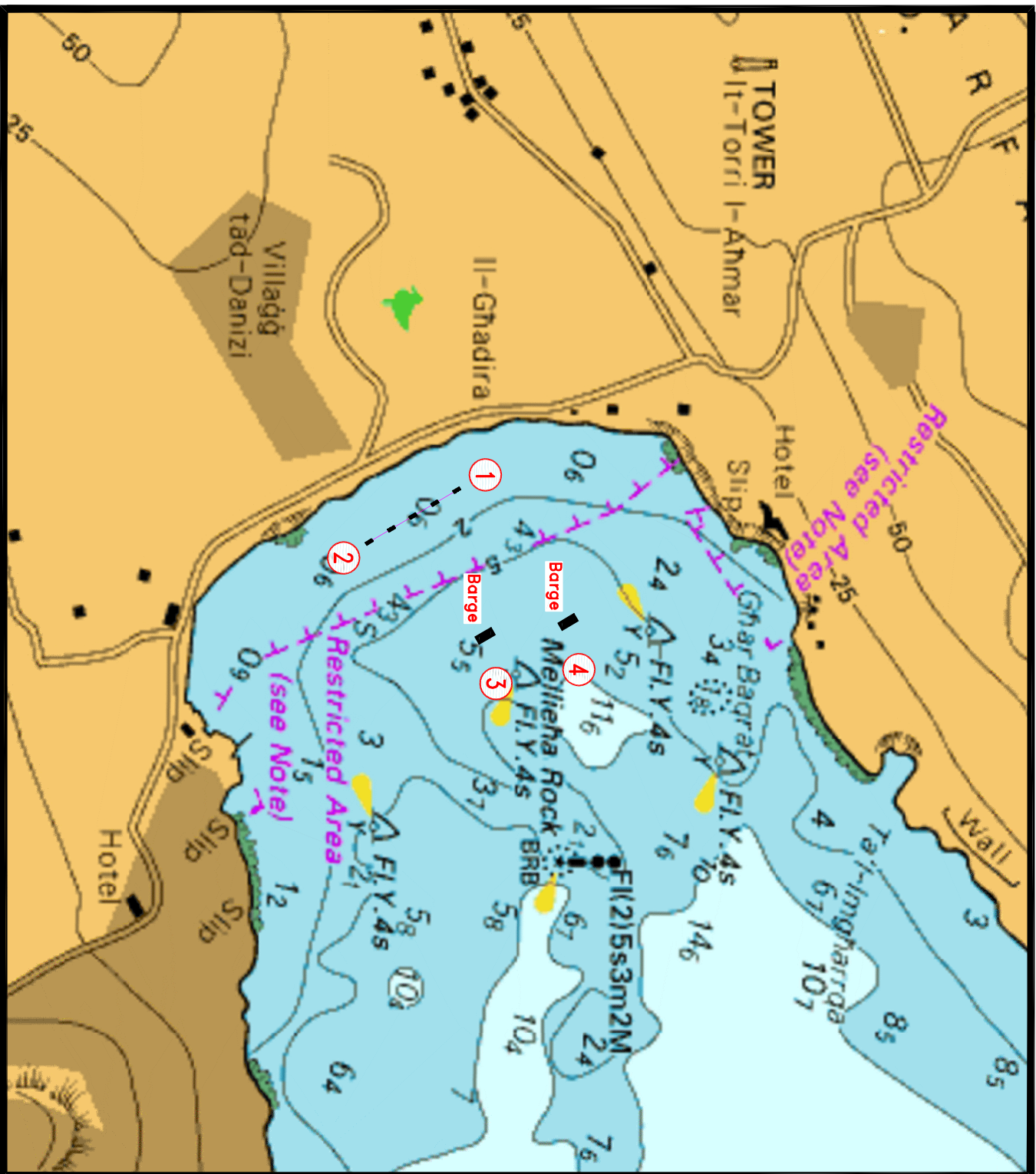
All vessels and bathers are warned to keep well clear and maintain a safe distance of not less than 200 metres from any of the pontoons and barges while they are being towed and once, they have been anchored in all the above-mentioned localities during the dates and times mentioned.

Authorized vessels are to give the display pontoons and barges a wide berth of at least 200m. No movements whatsoever will be allowed during the actual displays.

Mariners are to comply with instructions and directions issued by Valletta Port Control (Valletta VTS) on VHF Channel 12 and Maritime Enforcement Officers that will be in the area.

Positions are in **WGS 84 DATUM**

Chart Affected: **BA 36, 177, 211, 2537, 2538**

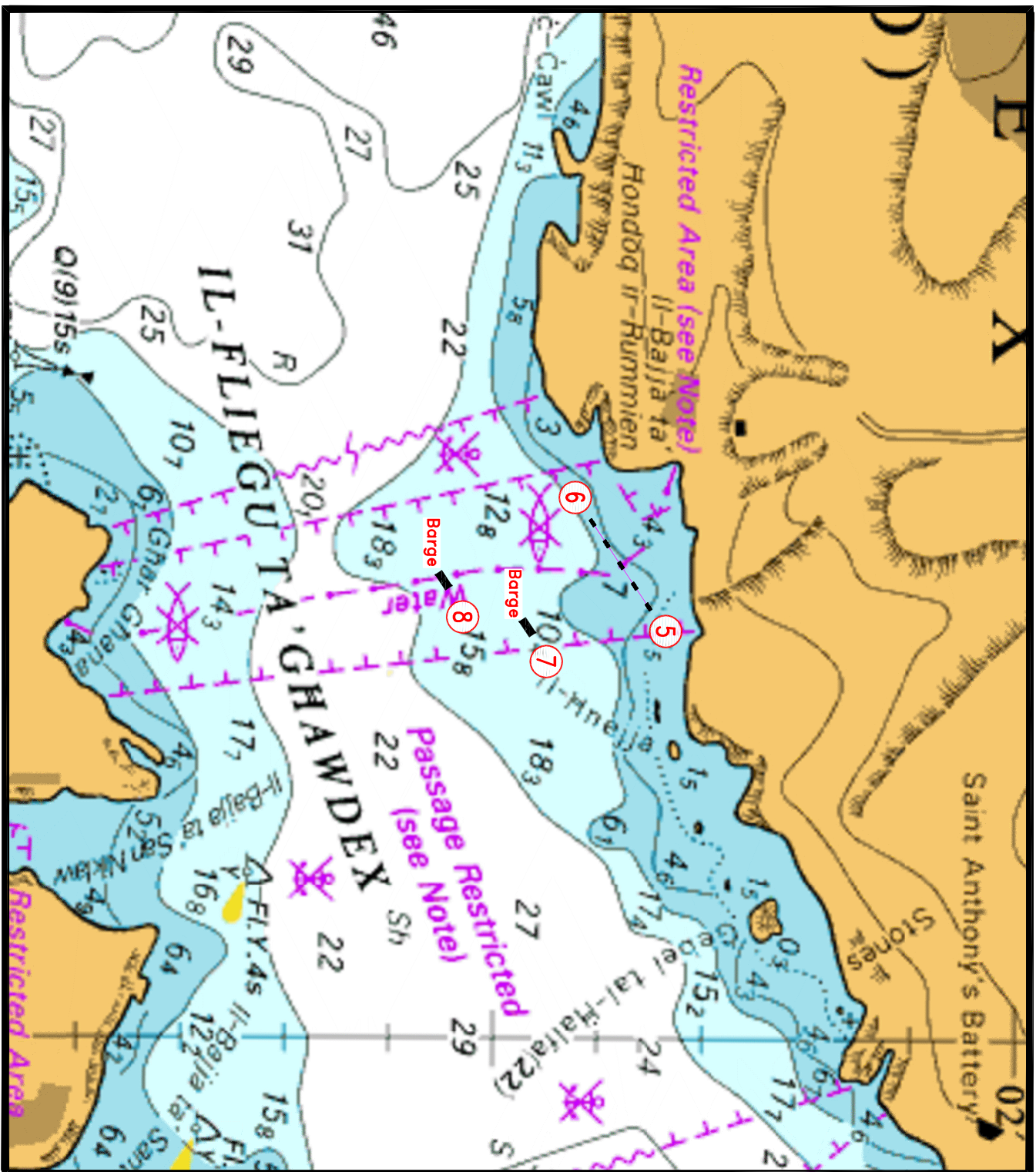


© British Crown Copyright 1970, 1983, 1986, 1988, 1999, 2000
All rights reserved.

The UK Hydrographic Office makes the accompanying data Available to Malta Maritime Authority (Transport Malta) Under the terms and conditions of agreement HO 1427/020930/01.

DISCLAIMER

Whilst the UK Hydrographic Office has endeavoured to ensure That the material supplied is suitable for the purpose described, it accepts no liability (to the maximum extent permitted by law) For any damage or loss of any nature arising from its use. The material supplied is used entirely at the Recipient's own risk.



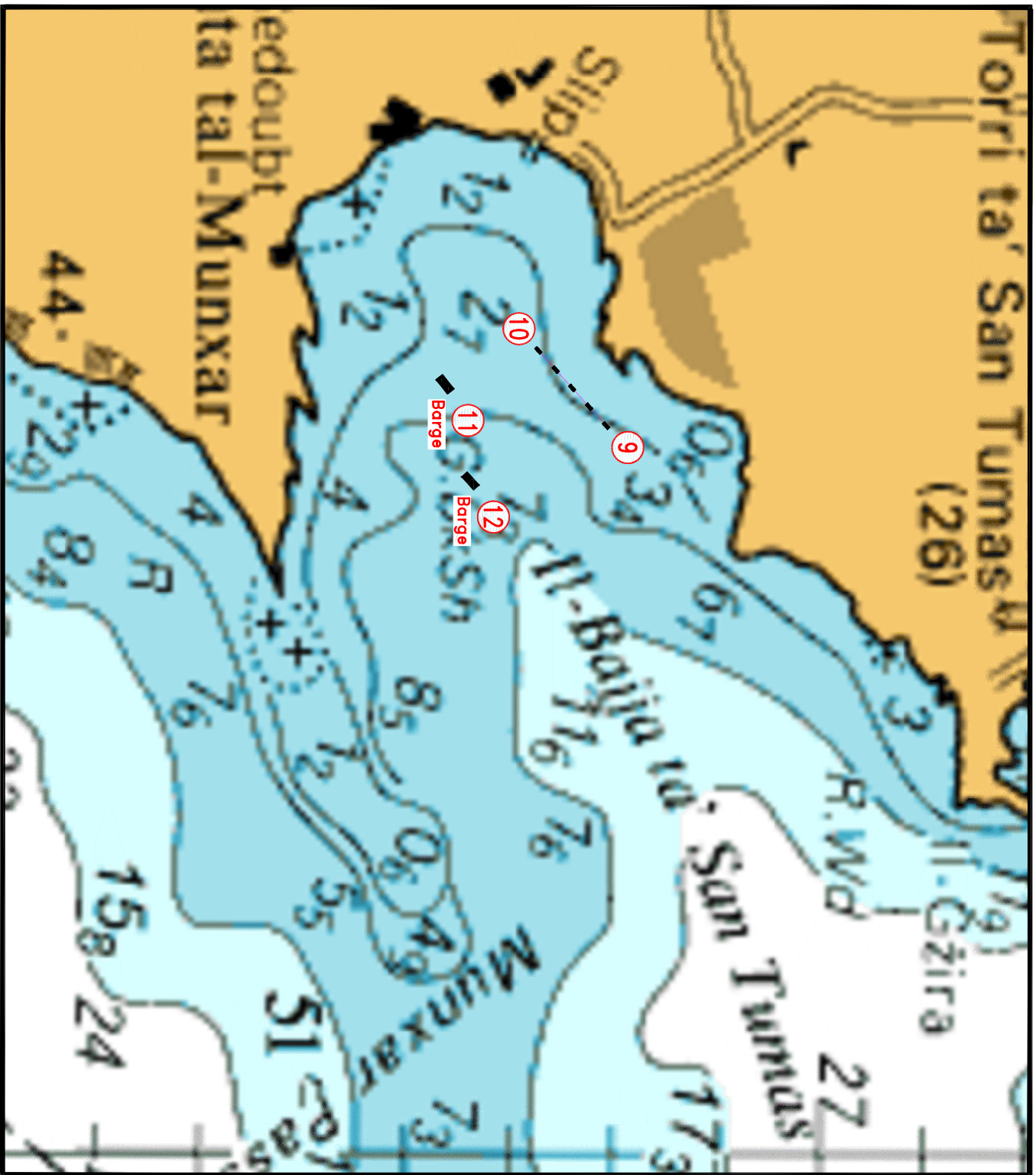
© British Crown Copyright 1970, 1983, 1986, 1988, 1999, 2000
All rights reserved.

The UK Hydrographic Office makes the accompanying data
Available to Malta Maritime Authority (Transport Malta)
Under the terms and conditions of agreement HO 1427/020930/01.

DISCLAIMER

Whilst the UK Hydrographic Office has endeavoured to ensure
That the material supplied is suitable for the purpose described,
it accepts no liability (to the maximum extent permitted by law)
For any damage or loss of any nature arising from its use.
The material supplied is used entirely at the Recipient's own risk.

Chart 2



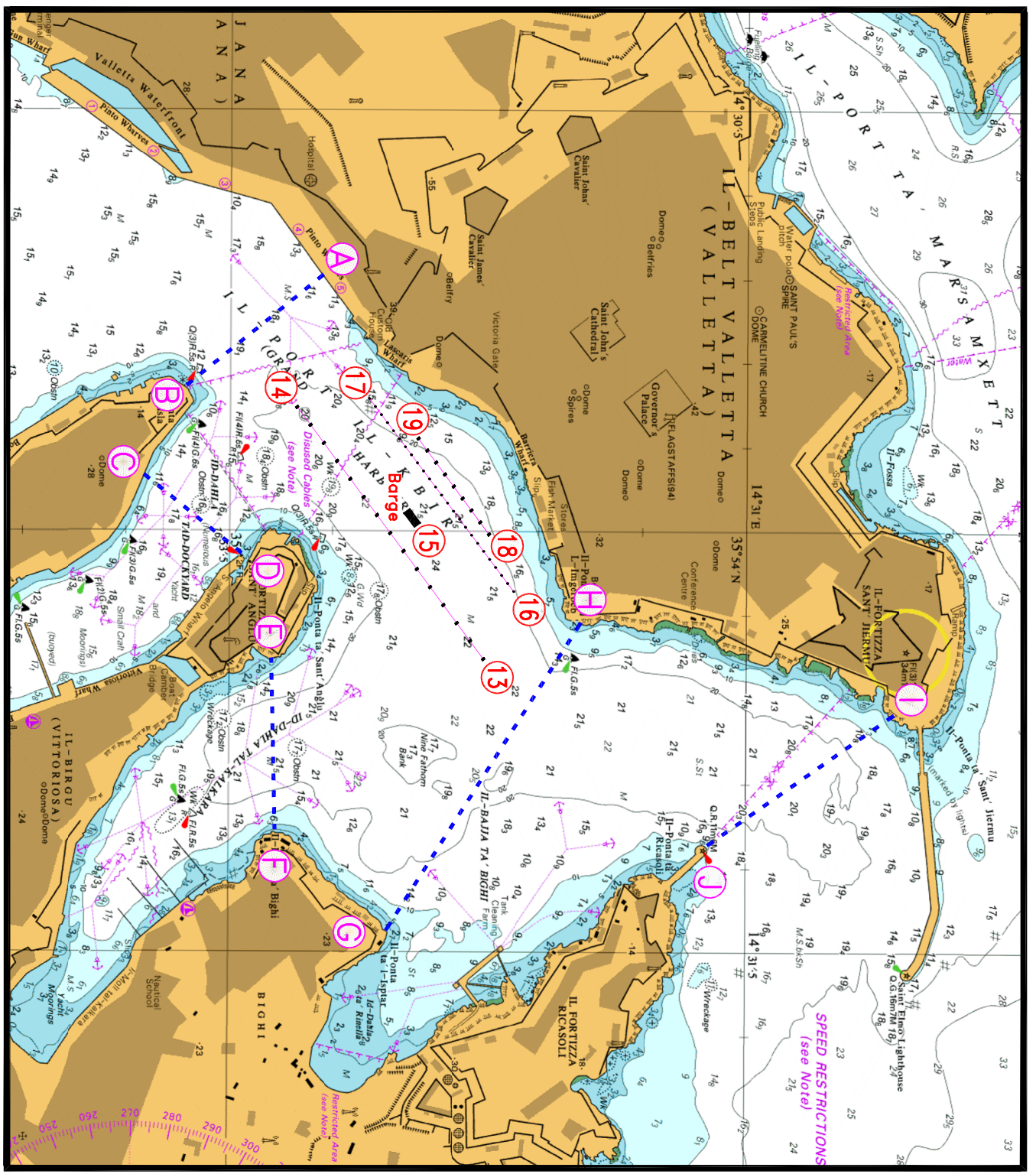
© British Crown Copyright 1970, 1983, 1986, 1988, 1999, 2000
 All rights reserved.

The UK Hydrographic Office makes the accompanying data
 Available to Malta Maritime Authority (Transport Malta)
 Under the terms and conditions of agreement HO 1427/020930/01.

DISCLAIMER

Whilst the UK Hydrographic Office has endeavoured to ensure
 That the material supplied is suitable for the purpose described,
 it accepts no liability (to the maximum extent permitted by law)
 For any damage or loss of any nature arising from its use.
 The material supplied is used entirely at the Recipient's own risk.

Chart 3



© British Crown Copyright 1970, 1983, 1986, 1988, 1999, 2000
 All rights reserved.

The UK Hydrographic Office makes the accompanying data
 Available to Malta Maritime Authority (Transport Malta)
 Under the terms and conditions of agreement HO 1427/020930/01.

DISCLAIMER

Whilst the UK Hydrographic Office has endeavoured to ensure
 That the material supplied is suitable for the purpose described,
 it accepts no liability (to the maximum extent permitted by law)
 For any damage or loss of any nature arising from its use.
 The material supplied is used entirely at the Recipient's own risk.