



PORTS AND YACHTING DIRECTORATE

LOCAL NOTICE TO MARINERS No 035 of 2022

Our Ref: **TM/PYD/70/02**

12 April 2022



Transport Malta

Malta Transport Centre,
Triq Pantar, Hal Lija, LJA 2021
Malta

Tel: (356) 2122 2203
Fax: (356) 2125 0365
Email: info.tm@transport.gov.mt

www.transport.gov.mt

ROV survey of cooling pipeline - at Qala San Marku, outwards

The Ports and Yachting Directorate, Transport Malta notifies mariners that a survey will be carried out with the use of a Remotely Operated Vehicle (ROV). This survey will be carried out by the RHIB “*ER - 1*” and her ancillary equipment.

Weather permitting, the survey is planned to be carried out on Tuesday 19th April 2022. If due to weather conditions the survey cannot be held on this day, it will be held between Monday 2nd May 2022 and Sunday 8th May 2022.

The ROV survey will be held along the line A – B as shown on attached chart:

	Latitude (N)	Longitude (E)	
A	35° 56'.833	14° 26'.812	(Coast)
B	35° 57'.148	14° 27'.290	

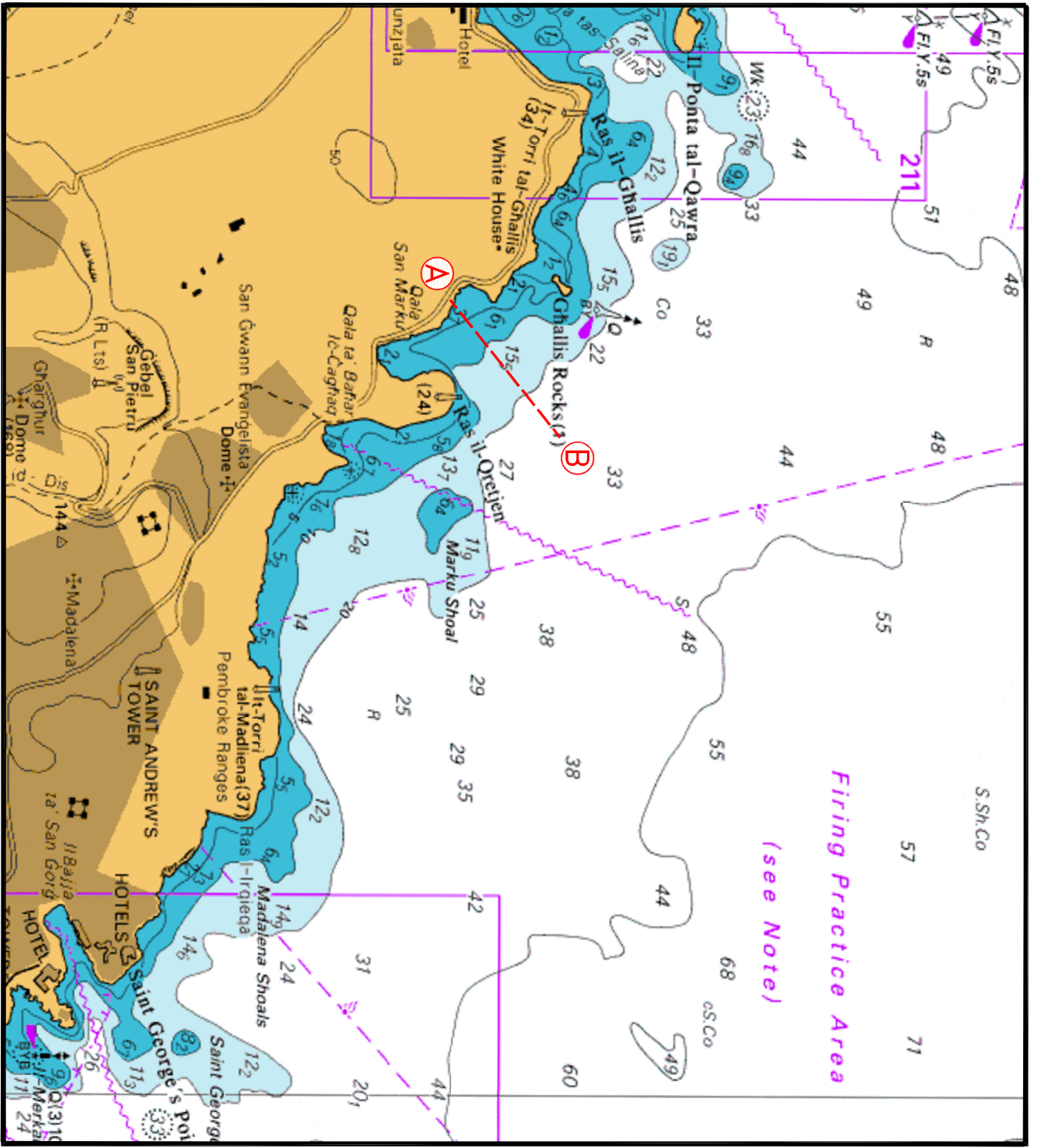
The actual survey is expected to take about 1 day.

Since the RHIB “*ER - 1*” will be towing an ROV, she will be restricted in her ability to manoeuvre.

Mariners are instructed to navigate with caution when the above-mentioned vessel is sighted and they are to maintain a safe distance of 100m from the vessels.

All mariners are to comply with any instructions given on VHF Channel 12 and/or 16, by Valletta VTS and by any Enforcement Personnel on site.

Charts Affected: **BA 2537, 2538**



© British Crown Copyright 1970, 1983, 1986, 1988, 1999, 2000
 All rights reserved.

The UK Hydrographic Office makes the accompanying data
 Available to Malta Maritime Authority (Transport Malta)
 Under the terms and conditions of agreement HO 1427/020930/01.

DISCLAIMER

Whilst the UK Hydrographic Office has endeavoured to ensure
 That the material supplied is suitable for the purpose described,
 it accepts no liability (to the maximum extent permitted by law)
 For any damage or loss of any nature arising from its use.
 The material supplied is used entirely at the Recipient's own risk.