



PORTS AND YACHTING DIRECTORATE

Transport Malta

LOCAL NOTICE TO MARINERS No 033 of 2022

Our Ref: **TM/PYD/63/95**

Malta Transport Centre
Marsa, MRS 1917
Malta

Tel: (356) 2122 2203
Fax: (356) 2125 0365
Email: info.tm@transport.gov.mt

06 April 2022

www.transport.gov.mt

Multi-beam Bathymetric Survey on inshore part of Interconnector – Qalet Marku

The Ports and Yachting Directorate, Transport Malta notifies mariners that a multi-beam bathymetric survey will be carried out on the inshore part of the Interconnector Cable.

The multi-beam bathymetric survey will start from the coast at Qalet Marku from point A and will follow the route to point B and extend 3Km outwards to point C, as shown on the attached chart.

	Latitude (N)	Longitude (E)
A (Coast – Qalet Marku)	35° 56'.560	014° 26'.960
B	35° 57'.769	014° 27'.276
C	35° 58'.136	014° 27'.716

The survey will start with immediate effect and is expected to be completed by Sunday 10th April 2022.

The support vessels “*Sea Express 4*” or “*Sea Express 5*” will be used during the survey.

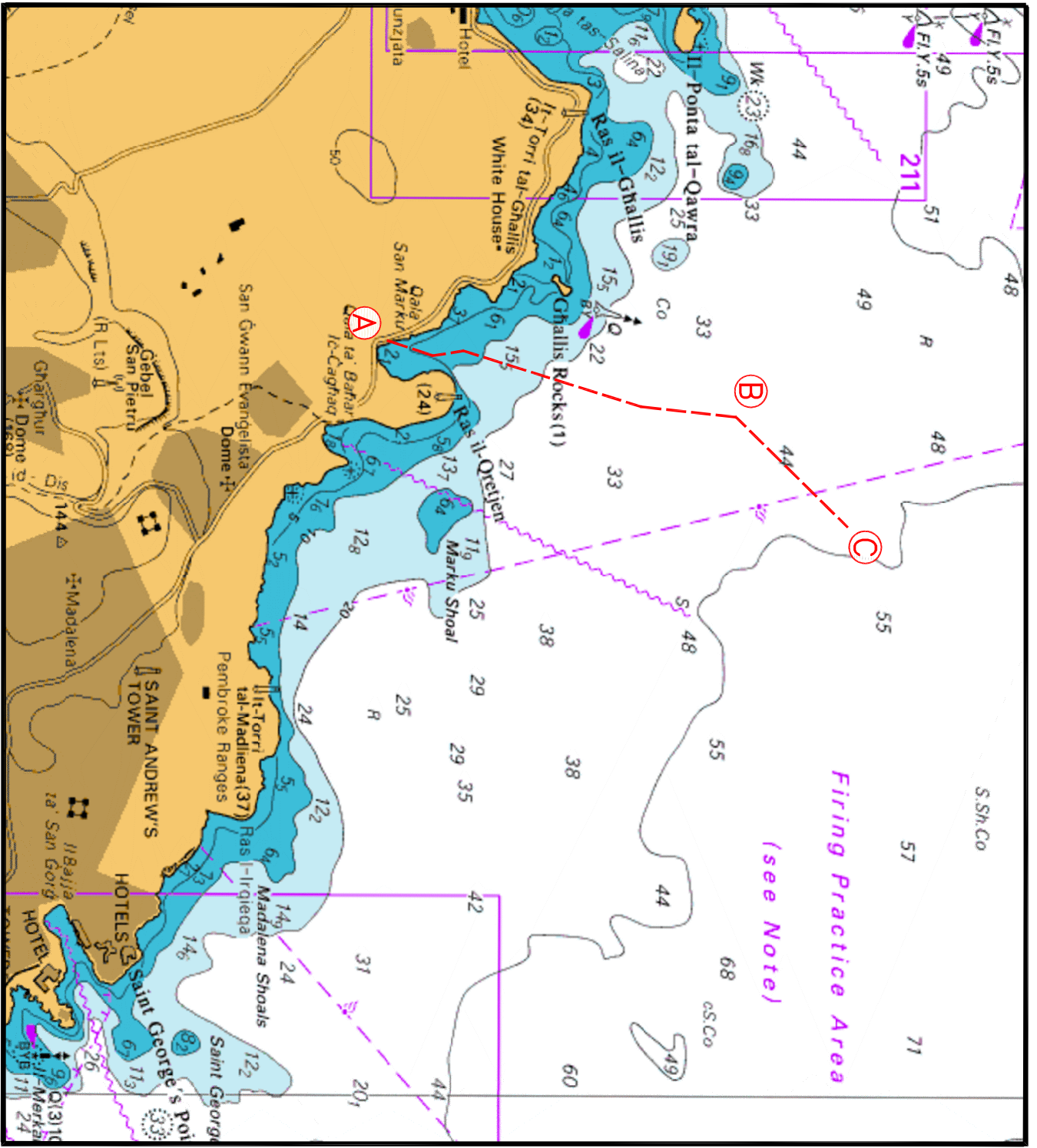
During the survey the vessels will be restricted in their ability to manoeuvre therefore a wide berth of 500m is requested.

The support vessel will be moving slowly and will display the international code of Signals flag “D” during the survey.

Masters and operators of vessels are advised to keep a sharp lookout, navigate with caution and at slow speed. All vessels shall give the above support vessels “*Sea Express 4*” and “*Sea Express 5*” a wide berth and are to cooperate with the survey team.

They are to comply with any instructions given on VHF Channel 12 and/or 16, by Marsaxlokk VTS and by any Enforcement Personnel on site.

Chart affected: **BA 177**



© British Crown Copyright 1970, 1983, 1986, 1988, 1999, 2000
 All rights reserved.

The UK Hydrographic Office makes the accompanying data
 Available to Malta Maritime Authority (Transport Malta)
 Under the terms and conditions of agreement HO 1427/020930/01.

DISCLAIMER

Whilst the UK Hydrographic Office has endeavoured to ensure
 That the material supplied is suitable for the purpose described,
 it accepts no liability (to the maximum extent permitted by law)
 For any damage or loss of any nature arising from its use.
 The material supplied is used entirely at the Recipient's own risk.