



PORTS AND YACHTING DIRECTORATE

LOCAL NOTICE TO MARINERS No. 028 of 2022

Our Ref: **TM/PYD/34/10**

25 March 2022



Transport Malta

Malta Transport Centre,
Triq Pantar, Hal Lija, LJA 2021
Malta

Tel: (356) 2122 2203
Fax: (356) 2125 0365
Email: info.tm@transport.gov.mt

www.transport.gov.mt

Port Closure in Grand Harbour and Mgarr Harbour, during the Visit of His Holiness Pope Francis.

The Ports and Yachting Directorate, Transport Malta notifies that in connection with the visit in Grand Harbour of His Holiness Pope Francis on Saturday 2nd April 2022, navigation within the Grand Harbour will be restricted from 1430 hrs until the departure of the “*HSC Maria Dolores*” from the Grand Harbour.

Grand Harbour

A number of areas are being designated to accommodate spectators as noted below:

1. Rinella Bay / Bighi Bay,
2. Dockyard Creek,
3. Lab South 2 to limits of Boiler Wharf

Vessels intending to moor within the above areas are to be securely moored by not later than 1400 hrs on Saturday, 2nd April 2022 in the area bound by the following coordinates. No spectator vessel will be permitted into the harbour after this time. Enforcement Units will be present to coordinate.

Position	Latitude (N)	Longitude (E)
A	35° 53'.882	014° 31'.423
B	35° 53'.540	014° 31'.156
C	35° 53'.535	014° 31'.005
D	35° 53'.456	014° 30'.864
E	35° 53'.355	014° 30'.844
F	35° 53'.136	014° 30'.412

and the intermediate coastline (as shown on the attached chart A).



Transport Malta

During the transit of the “*HSC Maria Dolores*”, which will be conveying His Holiness from Deep Water Quay 5 to Mgarr Harbour, the “*HSC Maria Dolores*” will carry out manoeuvres within the Grand Harbour as shown on the attached Chart C.

All vessels moored within the designated areas A, B & C are to remain in position, but will be permitted to **follow** the “*HSC Maria Dolores*” following her departure from Deep Water Quay.

These vessels must, at all times, maintain a minimum distance of 100 metres from the “*HSC Maria Dolores*” and must never impede the safe passage of the vessel. In addition, they are to comply with the International Regulations for the Prevention of Collisions at Sea and with due regard to the observance of good seamanship.

Transit between the Grand Harbour and the Mgarr Harbour

Vessels forming part of the convoy following the “*HSC Maria Dolores*” and any vessel joining the convoy must always maintain a minimum distance of 100 metres from the HSC and must never impede the safe passage of the vessel.

Mgarr Harbour

The Ports and Yachting Directorate, Transport Malta notifies that in connection with the visit in Mgarr Harbour of His Holiness Pope Francis on Saturday 2nd April 2022, the Mgarr Harbour will be restricted from 1630 hrs until 1945 hrs.

Several areas are being designated to accommodate spectators as noted below:

4. East of North Breakwater,
5. South of South Breakwater,

Vessels intending to moor within the above areas are to be securely moored by not later than 1600 hrs on Saturday, 2nd April 2022 in the area bound by the following coordinates. No spectator vessel will be permitted into these areas after this time. Enforcement Units will be present to coordinate.

Position	Latitude (N)	Longitude (E)
G	36° 01'.610	014° 18'.137
H	36° 01'.593	014° 18'.236
I	36° 01'.546	014° 18'.225
J	36° 01'.563	014° 18'.125
K	36° 01'.482	014° 18'.111



L	36° 01'.443	014° 18'.144
M	36° 01'.349	014° 17'.977
N	36° 01'.388	014° 17'.944

(as shown on the attached Chart B)

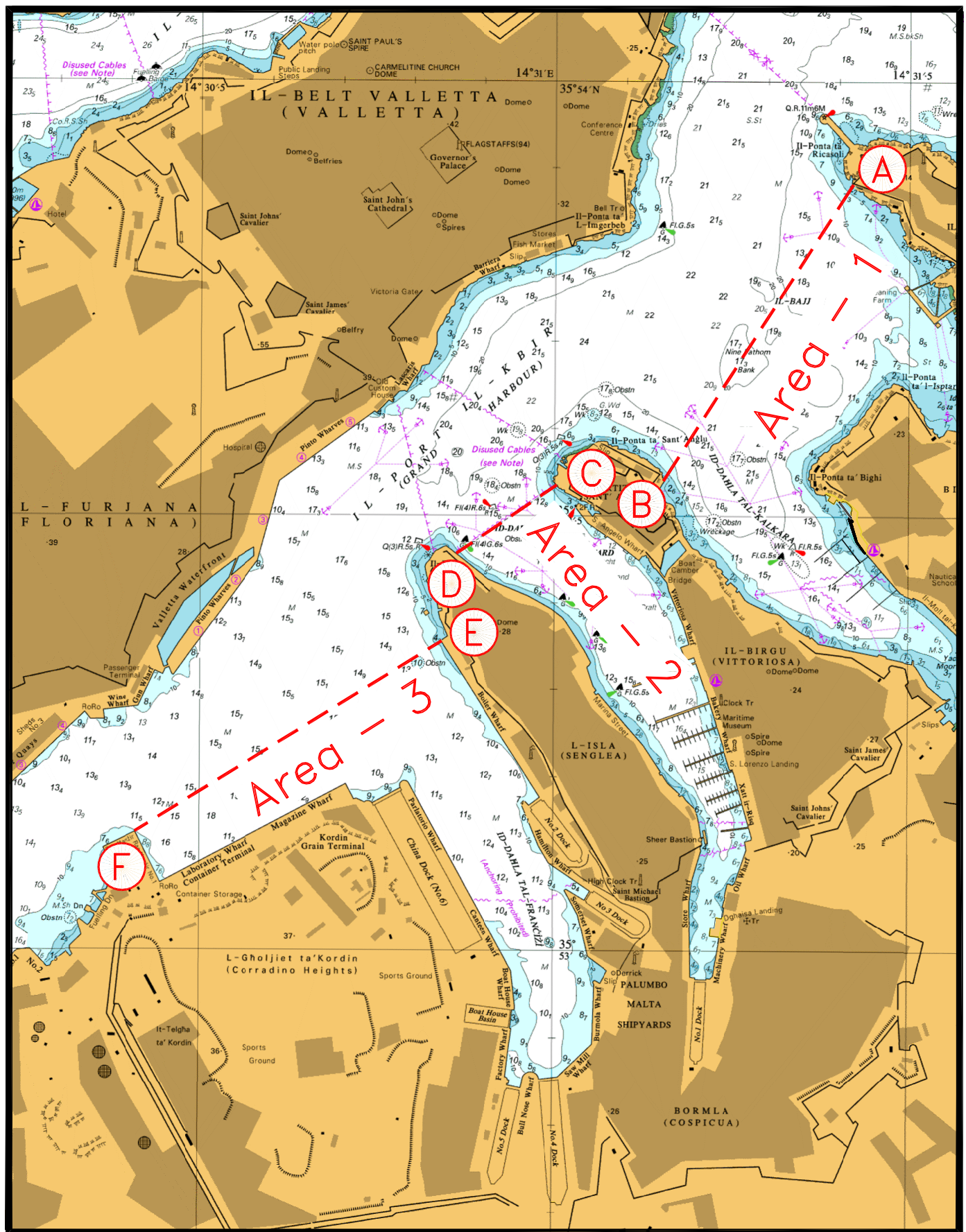
Vessels wishing to follow the Ro-Ro vessel “*Ta’ Pinu*” on departure from Mgarr and any vessel joining the convoy must at all times, maintain a minimum distance of 100 metres from the Ro-Ro vessel “*Ta’ Pinu*” and must never impede the safe passage of the vessel.

Any changes to the schedule will be communicated by VTS Valletta on channel 12 and Mgarr Port Control on channel 10.

Vessels are to comply with instructions issued by the Transport Malta, Valletta VTS, Mgarr Port Control, the Armed Forces of Malta and the Police.

Charts affected: BA Chart 177, 211, 2537, 2538

Positions referred to WGS 84 Datum



© British Crown Copyright 1970, 1983, 1986, 1988, 1999, 2000
 All rights reserved.

The UK Hydrographic Office makes the accompanying data
 Available to Malta Maritime Authority (Transport Malta)
 Under the terms and conditions of agreement HO 1427/020930/01.

DISCLAIMER

Whilst the UK Hydrographic Office has endeavoured to ensure
 That the material supplied is suitable for the purpose described,
 It accepts no liability (to the maximum extent permitted by law)
 For any damage or loss of any nature arising from its use.
 The material supplied is used entirely at the Recipient's own risk.

Chart A

© British Crown Copyright 1970, 1983, 1986, 1988, 1999, 2000
All rights reserved.

The UK Hydrographic Office makes the accompanying data
Available to Malta Maritime Authority (Transport Malta)
Under the terms and conditions of agreement HO 1427/020930/01.

DISCLAIMER

Whilst the UK Hydrographic Office has endeavoured to ensure
That the material supplied is suitable for the purpose described,
It accepts no liability (to the maximum extent permitted by law)
For any damage or loss of any nature arising from its use.
The material supplied is used entirely at the Recipient's own risk.

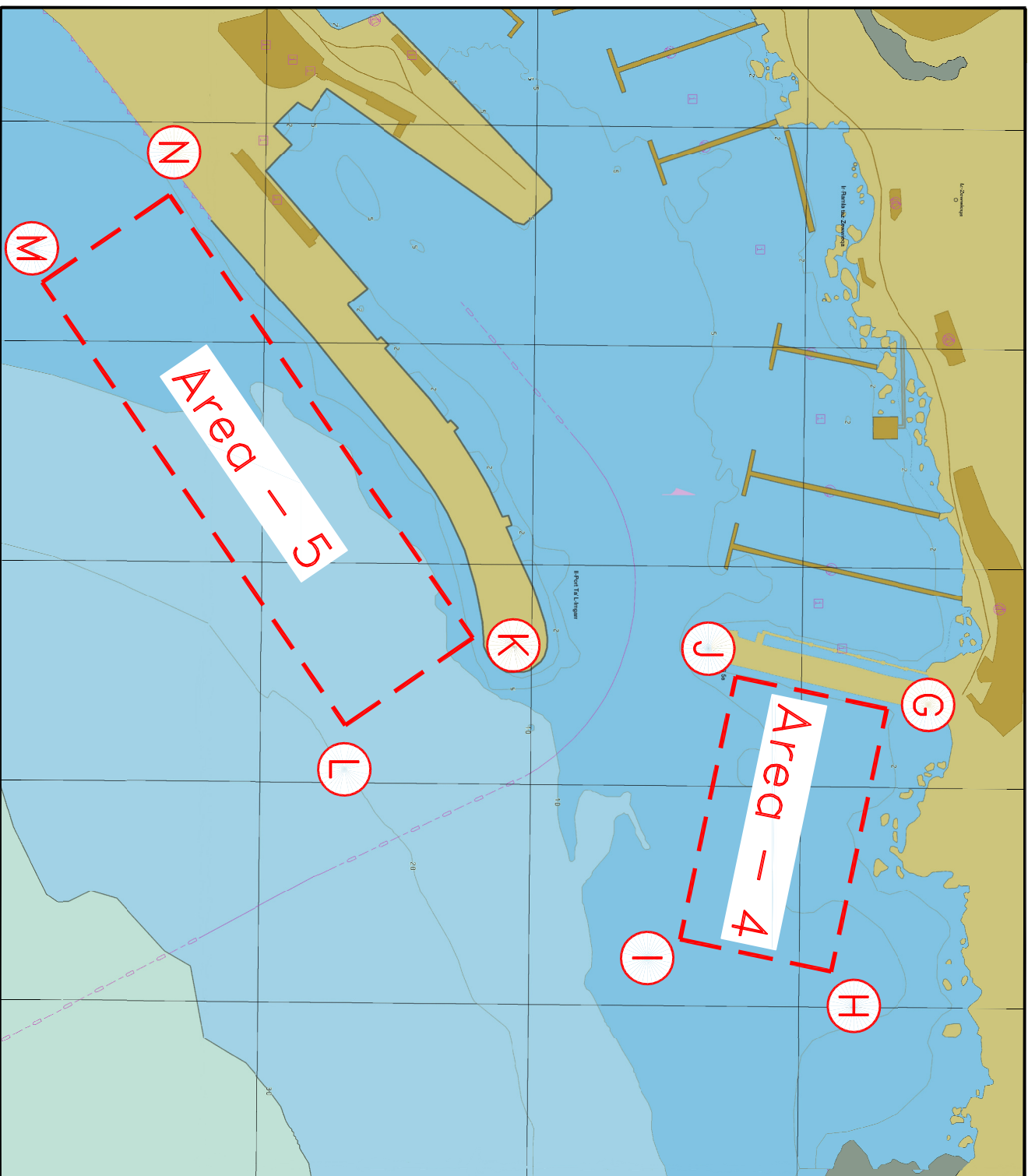
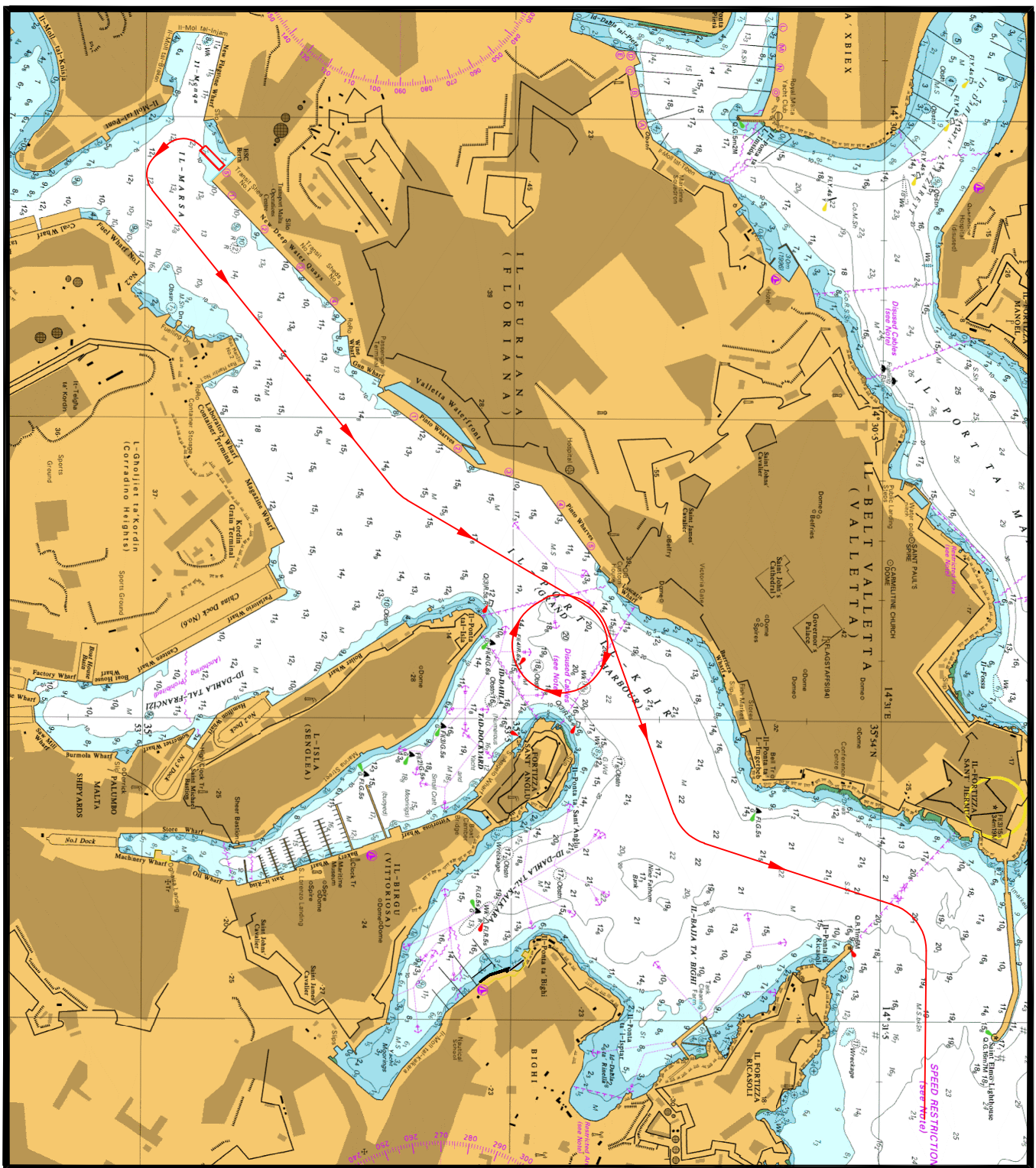


Chart B



© British Crown Copyright 1970, 1983, 1986, 1988, 1999, 2000
All rights reserved.

The UK Hydrographic Office makes the accompanying data
Available to Malta Maritime Authority (Transport Malta)
Under the terms and conditions of agreement HO 1427/020930/01.

DISCLAIMER

Whilst the UK Hydrographic Office has endeavoured to ensure
That the material supplied is suitable for the purpose described,
It accepts no liability (to the maximum extent permitted by law)
For any damage or loss of any nature arising from its use.
The material supplied is used entirely at the Recipient's own risk.