



PORTS AND YACHTING DIRECTORATE

LOCAL NOTICE TO MARINERS No 024 of 2022

Our Ref: **TM/PYD/0001/22**

18 March 2022



Transport Malta

Malta Transport Centre,
Triq Pantar, Hal Lija, LJA 2021
Malta

Tel: (356) 2122 2203
Fax: (356) 2125 0365
Email: info.tm@transport.gov.mt

www.transport.gov.mt

Translocation of Maltese Top-shell (*Gibbula nivos*a) within Marsamxett Harbour

The Ports and Yachting Directorate, Transport Malta, notifies mariners that there will be a translocation operation of Maltese Top-shell (*Gibbula nivos*a) within Marsamxett Harbour.

The works consist of translocating the colonies of Maltese Top-shell (*Gibbula nivos*a) from within area "A" (Valletta Waterpolo Pitch) to within area "B" (Manoel Island), as shown on the attached chart.

The translocation operation is expected to commence on any day from Tuesday 22nd March 2022 onwards and is expected to be completed by Monday 18th April 2022.

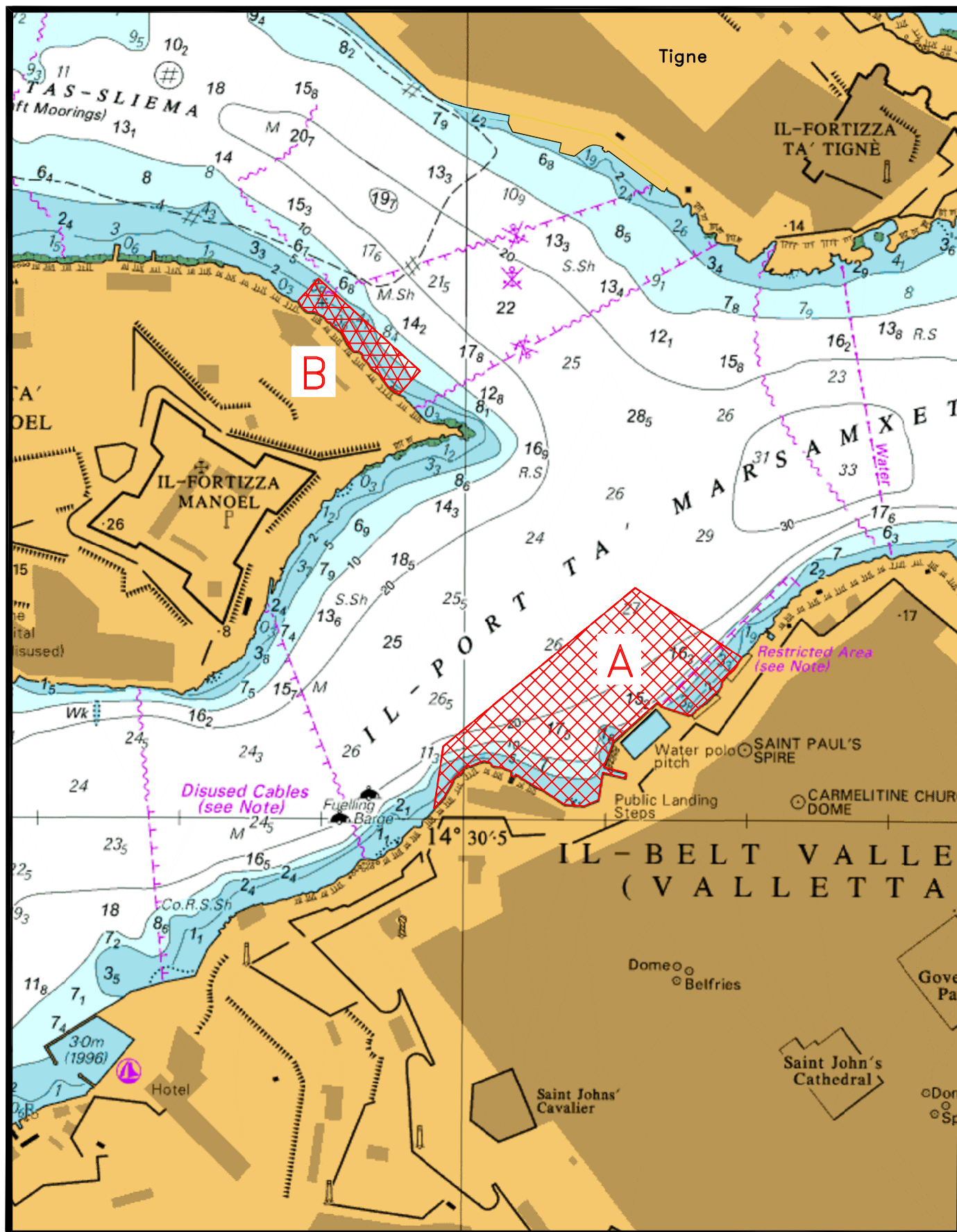
Divers will be performing the translocation and will be displaying the International Code of Signals flag "A", when diving is taking place.

The works will be coordinated between the Ferry Service operator and the contractor on site.

Mariners navigating in the vicinity of the indicated areas on the mentioned dates and times are to keep watch on VHF Channel **12** and/or **16** and are to cooperate with the contractor and/or enforcement personnel in the area.

Any instructions issued on VHF channel **12** and/or **16** by Valletta VTS are to be complied with.

Chart affected: **BA 177**



© British Crown Copyright 1970, 1983, 1986, 1988, 1999, 2000
 All rights reserved.

The UK Hydrographic Office makes the accompanying data
 Available to Malta Maritime Authority (Transport Malta)
 Under the terms and conditions of agreement HO 1427/020930/01.

DISCLAIMER

Whilst the UK Hydrographic Office has endeavoured to ensure
 That the material supplied is suitable for the purpose described,
 It accepts no liability (to the maximum extent permitted by law)
 For any damage or loss of any nature arising from its use.
 The material supplied is used entirely at the Recipient's own risk.