



PORTS AND YACHTING DIRECTORATE

Transport Malta

## LOCAL NOTICE TO MARINERS No 023 of 2022

Our Ref: **TM/PYD/63/95**

Malta Transport Centre  
Marsa, MRS 1917  
Malta

Tel: (356) 2122 2203  
Fax: (356) 2125 0365  
Email: [info.tm@transport.gov.mt](mailto:info.tm@transport.gov.mt)

18 March 2022

[www.transport.gov.mt](http://www.transport.gov.mt)

### **Benthic survey along Boiler Wharf in the Grand Harbour**

The Ports and Yachting Directorate, Transport Malta notifies mariners that a Benthic survey will be carried out along Boiler Wharf in the Grand Harbour.

The survey will be carried out, by divers, on any day between Tuesday 22<sup>nd</sup> March 2022 and Monday 18<sup>th</sup> April 2022. The divers will display the international code of Signals flag "A" when diving is taking place.

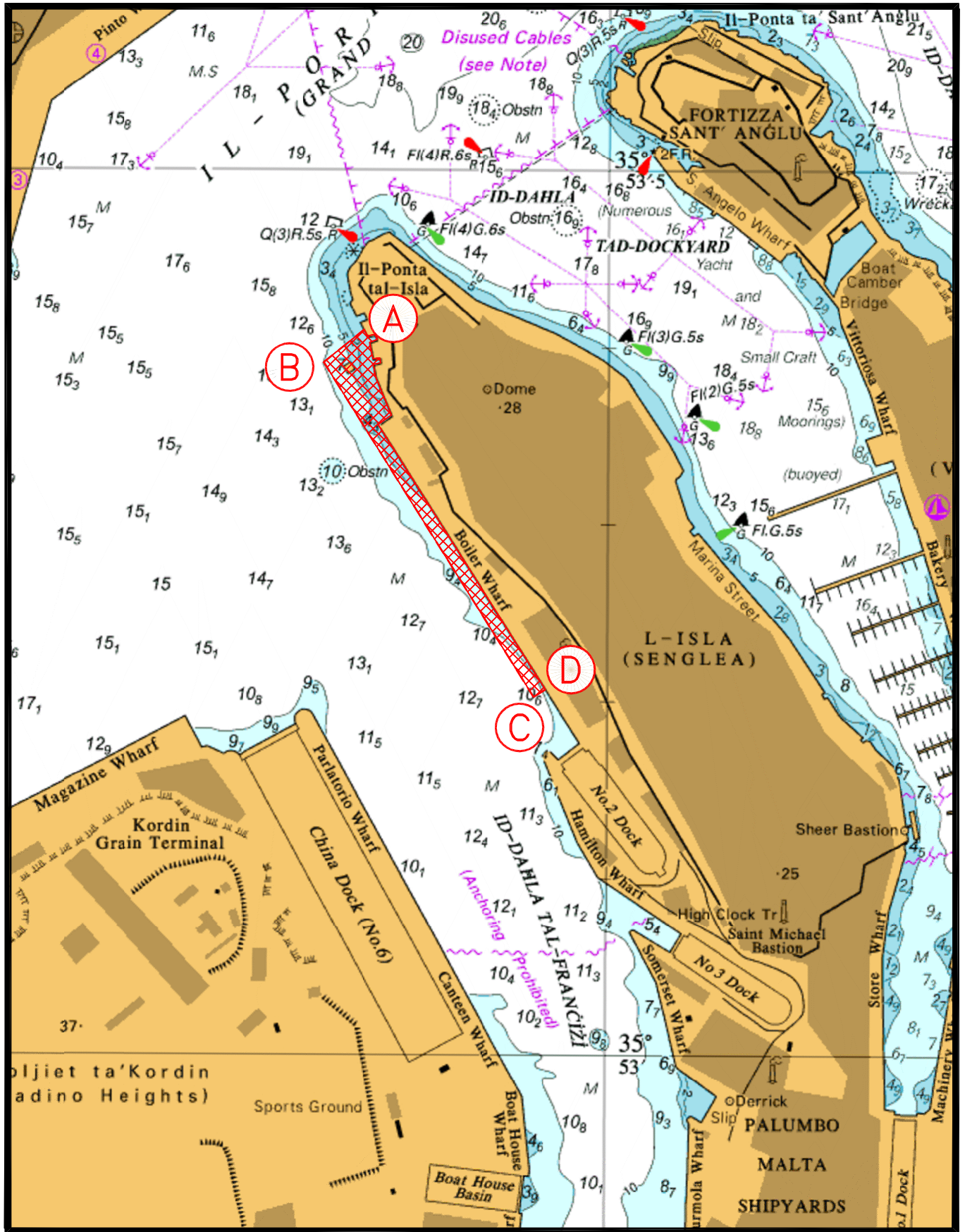
The Benthic survey will be carried out within the area A, B, C, D, and the intermediate coastline (as shown on attached chart).

The works will be coordinated by the Valletta Port Control (Valletta VTS), the Traffic Management Unit (TMU) at Transport Malta and the contractor on site.

Mariners navigating in the vicinity of the indicated areas on the mentioned dates and times are to keep watch on VHF Channel **12** and/or **16** and are to cooperate with the contractor and/or enforcement personnel in the area.

Any instructions issued on VHF channel **12** and/or **16** by Valletta VTS are to be complied with.

Chart affected: **BA 177**



© British Crown Copyright 1970, 1983, 1986, 1988, 1999, 2000  
All rights reserved.

The UK Hydrographic Office makes the accompanying data  
Available to Malta Maritime Authority (Transport Malta)  
Under the terms and conditions of agreement HO 1427/020930/01.

**DISCLAIMER**

Whilst the UK Hydrographic Office has endeavoured to ensure  
That the material supplied is suitable for the purpose described,  
It accepts no liability (to the maximum extent permitted by law)  
For any damage or loss of any nature arising from its use.  
The material supplied is used entirely at the Recipient's own risk.