



PORTS AND YACHTING DIRECTORATE

Transport Malta

LOCAL NOTICE TO MARINERS No 008 of 2022

Our Ref: **TM/PYD/63/95**

Malta Transport Centre
Marsa, MRS 1917
Malta

Tel: (356) 2122 2203
Fax: (356) 2125 0365
Email: info.tm@transport.gov.mt

03 February 2022

www.transport.gov.mt

Hydrographic (Multi-beam) survey in Il-Bajja ta' Marsaxlokk

The Ports and Yachting Directorate, Transport Malta notifies mariners that a Hydrographic (multi-beam) survey will be carried out in Il-Bajja ta' Marsaxlokk.

The multibeam Hydrographic survey will be held between Wednesday 9th February 2022 and Tuesday 8th March 2022 and will be within the area as shown on attached chart.

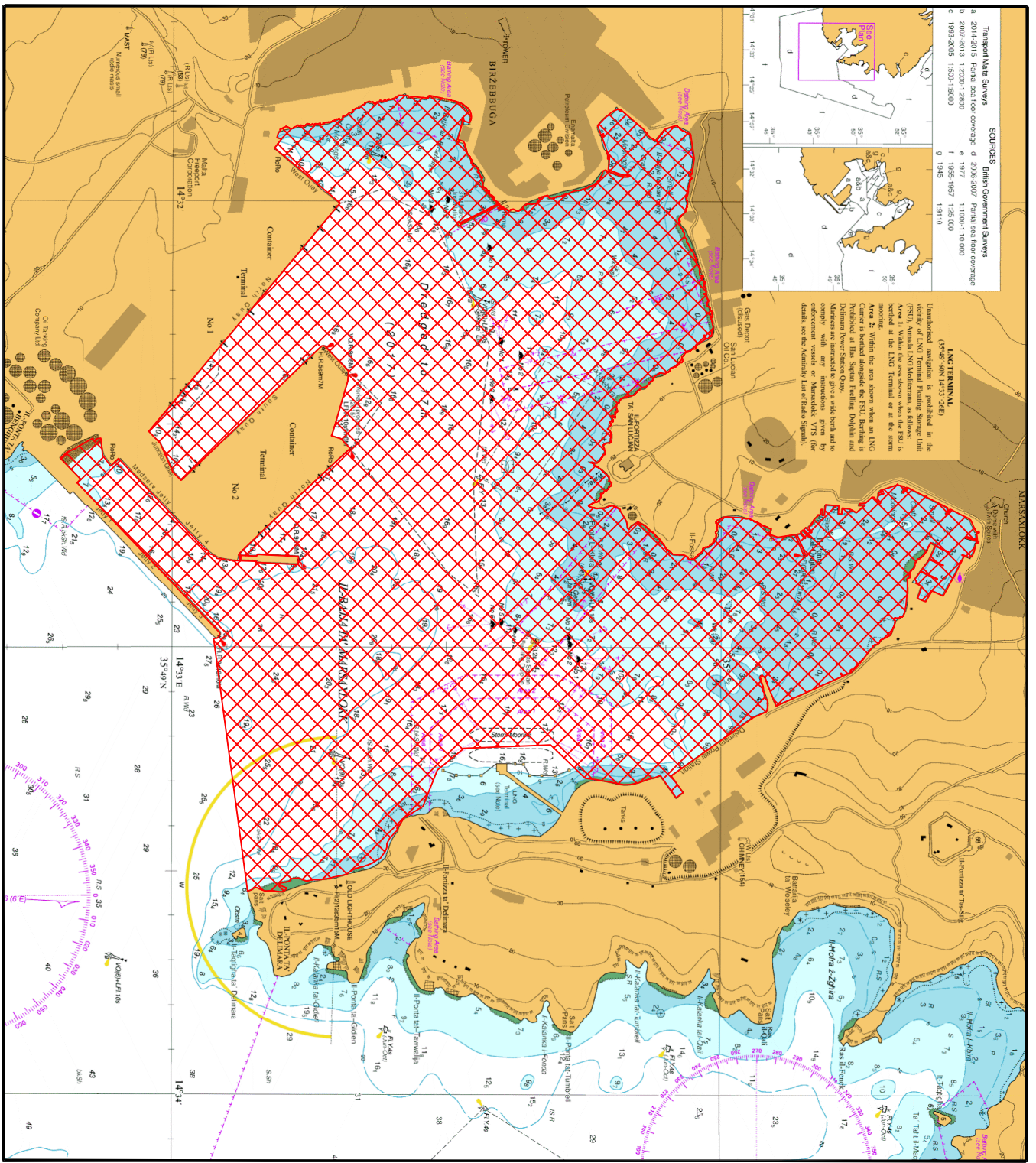
The survey will be carried out in all areas of Il-Bajja ta' Marsaxlokk that are accessible and safe for the survey vessel to manoeuvre.

The support vessels "*BEEZER*" will be used during the survey, therefore a wide berth of 25m is requested. The support vessel will be moving slowly and will display the international code of Signals flag "D" during the survey.

Masters and operators of vessels are advised to keep a sharp lookout, navigate with caution and at slow speed. All vessels shall give the above support vessel "*BEEZER*" a wide berth and shall cooperate with the survey team.

They are to comply with any instructions given on VHF Channel 14 and/or 16, by Marsaxlokk VTS and by any Enforcement Personnel on site.

Chart affected: **BA 36**



SOURCES

British Government Surveys	d 2006-2007	Partial sea floor coverage
2014-2015	1:2000-1:2800	Partial sea floor coverage
2007-2013	1:2000-1:2800	Partial sea floor coverage
1985-1987	1:2500	Partial sea floor coverage
1993-2005	1:500-1:8000	Partial sea floor coverage
1945	1:9110	Partial sea floor coverage

LNG TERMINAL
(13°59'40N 14°33'20E)

Unauthorized navigation is prohibited in the vicinity of the LNG Terminal Floating Storage Unit (FSU) within the area shown when the FSU is berthed at the LNG Terminal or at the same mooring. Within the area shown when an LNG Carrier is berthed alongside the FSU, berthing is prohibited at the LNG Terminal. Berthing is prohibited at the LNG Terminal, the LNG Carrier and the LNG Carrier's mooring. Mariners are instructed to give a wide berth and to exercise caution when navigating in the vicinity of the LNG Terminal. For details see the Admiralty List of Radio Signals.

© British Crown Copyright 1970, 1983, 1986, 1988, 1999, 2000
All rights reserved.

The UK Hydrographic Office makes the accompanying data Available to Malta Maritime Authority (Transport Malta) Under the terms and conditions of agreement HO 1427/020930/01.

DISCLAIMER

Whilst the UK Hydrographic Office has endeavoured to ensure That the material supplied is suitable for the purpose described, it accepts no liability (to the maximum extent permitted by law) For any damage or loss of any nature arising from its use. The material supplied is used entirely at the Recipient's own risk.