



PORTS AND YACHTING DIRECTORATE

NOTICE TO MARINERS No 03 of 2022

Our Ref: **TM/PYD/ 299/81**

14 January 2022

Chart Correction - New coastline and pontoons configuration and corrected soundings at Il-Port tal-Imġarr, Għawdex

Reference is made to BA Charts 211D – Għawdex - Il-Port tal-Imġarr

The Ports and Yachting Directorate, Transport Malta notifies Mariners that dredging works and alterations to the coastline and pontoons configuration at Il-Port tal-Imġarr, Għawdex have been completed.

The new coastline and pontoons configuration and the corrected depths are as shown on the attached chart.

Chart Affected: **BA 211D**



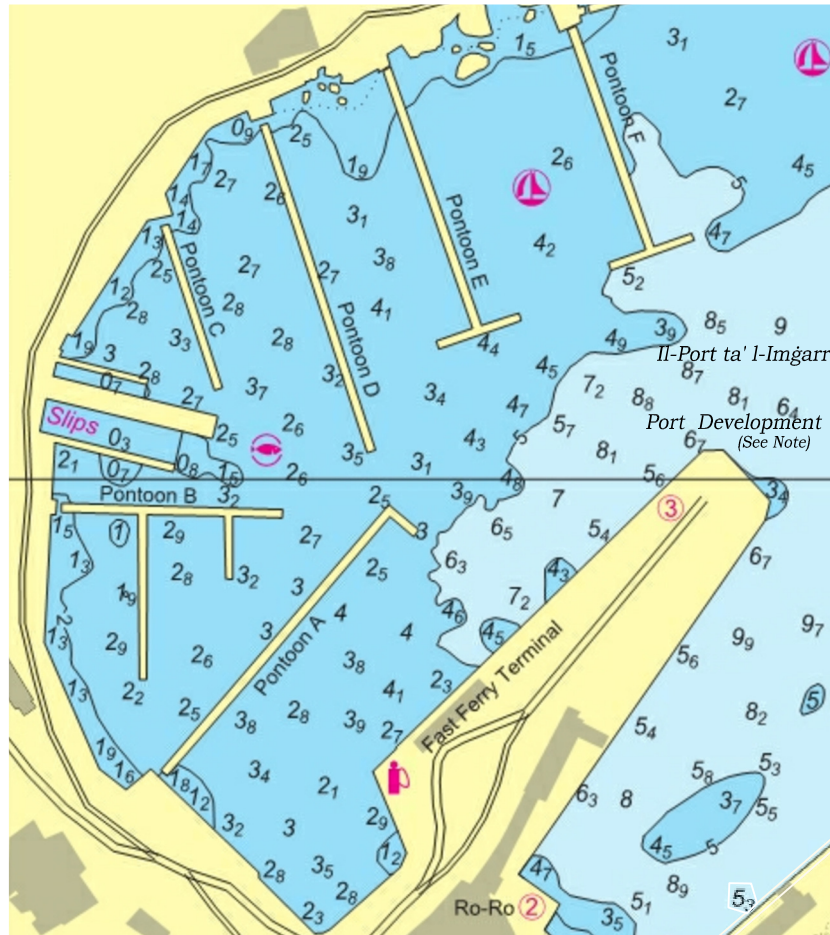
Transport Malta

Malta Transport Centre,
Triq Pantar, Hal Lija, LJA 2021
Malta

Tel: (356) 2122 2203
Fax: (356) 2125 0365
Email: info.tm@transport.gov.mt

www.transport.gov.mt

Image size (mm) 94.6 by 84.2



Block for Chart No. 211D

Centered on $36^{\circ} 01'.501$
 $014^{\circ} 17'.883$

© Transport Malta all rights reserved

DISCLAIMER

Whilst the Ports and Yachting Directorate, Transport Malta has endeavoured to ensure that the material supplied is suitable for the purpose described, it accepts no liability (to the maximum extent permitted by law) for any damage or loss of any nature arising from its use.

The material supplied is used entirely at the Recipient's own risk.