



PORTS AND YACHTING DIRECTORATE

LOCAL NOTICE TO MARINERS No 187 of 2021

Our Ref: **TM/PYD/63/95**

29 November 2021



Transport Malta

Malta Transport Centre,
Triq Pantar, Hal Lija, LJA 2021
Malta

Tel: (356) 2122 2203
Fax: (356) 2125 0365
Email: info.tm@transport.gov.mt

www.transport.gov.mt

Drilling of 2 boreholes (sediment testing) in St. Julian's Bay

The Ports and Yachting Directorate, Transport Malta, notifies mariners that the drilling of 2 boreholes (sediment testing) will be carried out in St. Julian's Bay.

The drilling works will be carried out at points S1 and S2 as shown on attached chart.

	LATITUDE (N)	LONGITUDE (E)
S1	35° 54'.993	014° 29'.662
S2	35° 55'.020	014° 29'.652

The works will be carried out on Tuesday 7th December 2021 weather permitting.

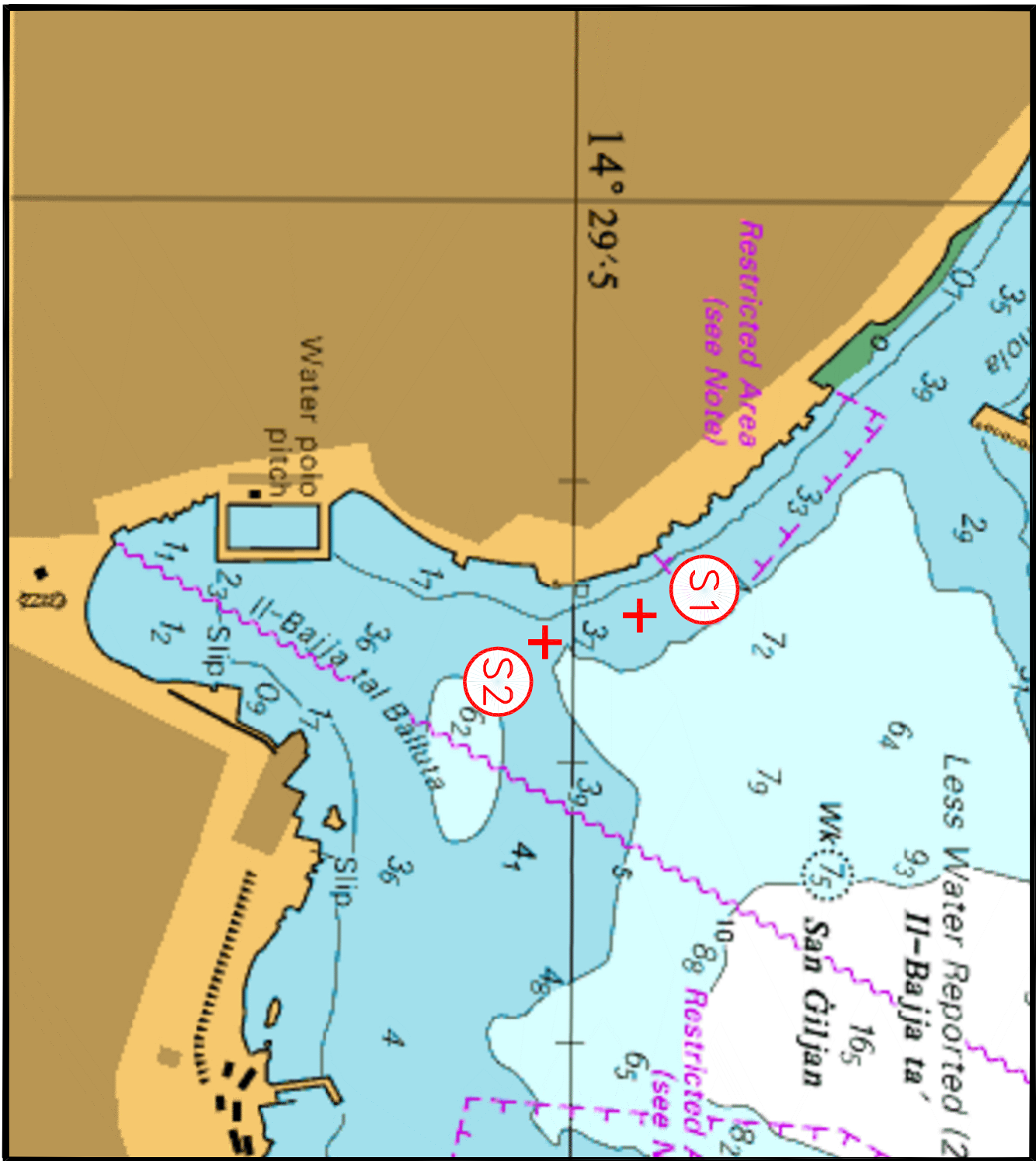
Works will be carried out from the barge "BEZZ V" which will be accompanied by the tugboat "TUG 46". The barge may deploy anchors to hold it in position and will be exhibiting the appropriate lights and shapes in accordance with the requirements of the International Regulations for the Prevention of Collisions at Sea (COLREGS) 1972.

Masters and operators of vessels are advised to keep a sharp look-out, navigate with caution and at very slow speed and give the indicated vessels a wide berth.

They are also to comply with any instructions given on VHF channel **12** and/or **16** by Valletta VTS and to co-operate with the contractor on site.

Charts affected: **BA 177**

Positions referred to WGS 84 DATUM.



© British Crown Copyright 1970, 1983, 1986, 1988, 1999, 2000
All rights reserved.

The UK Hydrographic Office makes the accompanying data
Available to Malta Maritime Authority (Transport Malta)
Under the terms and conditions of agreement HO 1427/020930/01.

DISCLAIMER

Whilst the UK Hydrographic Office has endeavoured to ensure
That the material supplied is suitable for the purpose described,
It accepts no liability (to the maximum extent permitted by law)
For any damage or loss of any nature arising from its use.
The material supplied is used entirely at the Recipient's own risk.