



PORTS AND YACHTING DIRECTORATE

## NOTICE TO MARINERS No 34 of 2021

Our Ref: **TM/PYD/ 299/81**

25 August 2021



**Transport Malta**

Malta Transport Centre,  
Triq Pantar, Hal Lija, LJA 2021  
Malta

Tel: (356) 2122 2203  
Fax: (356) 2125 0365  
Email: [info.tm@transport.gov.mt](mailto:info.tm@transport.gov.mt)

[www.transport.gov.mt](http://www.transport.gov.mt)

### **Chart Correction - Coastline, revetments and walkway at Il-Ponta ta' Bighi in Id-Dahla tal-Kalkara**

Reference is made to BA Chart 177 – Valletta Harbours.

The Ports and Yachting Directorate, Transport Malta notifies Mariners that the following changes have been made at Il-Ponta ta' Bighi in Id-Dahla tal-Kalkara.

A 2m wide walkway and revetments of the shoreline have been constructed as shown on attached chart.

			Latitude (N)	Longitude (E)
Insert	new coastline (outer), joining:	(a)	35° 53'.528	014° 31'.382
			35° 53'.526	014° 31'.388
			35° 53'.522	014° 31'.384
			35° 53'.517	014° 31'.393
			35° 53'.523	014° 31'.397
			35° 53'.518	014° 31'.401
		(b)	35° 53'.520	014° 31'.403
Delete	old coastline, joining		(a) to (b) above	
Insert	new coastline (inner), joining:	(c)	35° 53'.503	014° 31'.417
			35° 53'.502	014° 31'.415
			35° 53'.497	014° 31'.420
			35° 53'.496	014° 31'.418
			35° 53'.473	014° 31'.426
			35° 53'.460	014° 31'.438
		(d)	35° 53'.455	014° 31'.443
Delete	old coastline, joining		(c) to (d) above	

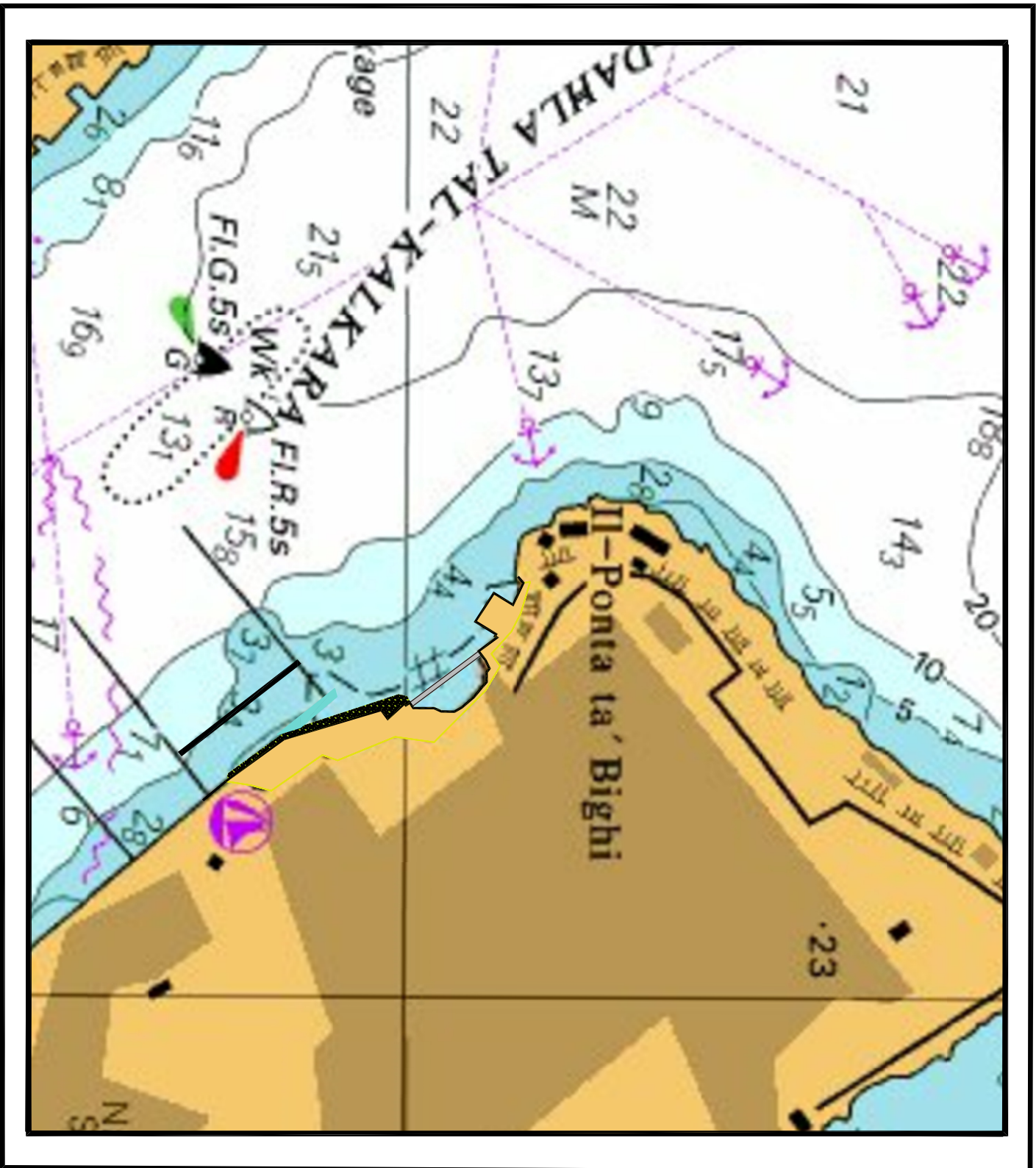


Transport Malta

Insert	2m wide footpath (centred on line), joining:	35° 53'.519	014° 31'.401
		35° 53'.503	014° 31'.416
Insert	limit of revetment, joining:	35° 53'.502	014° 31'.416
		35° 53'.502	014° 31'.415
		35° 53'.500	014° 31'.414
		35° 53'.474	014° 31'.424
		35° 53'.461	014° 31'.436
		35° 53'.461	014° 31'.437
Insert	2.5m wide pontoon (centred on line), joining:	35° 53'.477	014° 31'.404
		35° 53'.450	014° 31'.430
Delete	2.5m wide pontoon (centred on line), joining:	35° 53'.484	014° 31'.414
		35° 53'.474	014° 31'.424

Chart affected: BA 177, 2538

Positions referred to **WGS 84 DATUM**



© British Crown Copyright 1970, 1983, 1986, 1988, 1999, 2000  
All rights reserved.

The UK Hydrographic Office makes the accompanying data  
Available to Malta Maritime Authority (Transport Malta)  
Under the terms and conditions of agreement HO 1427/020930/01.

**DISCLAIMER**

Whilst the UK Hydrographic Office has endeavoured to ensure  
That the material supplied is suitable for the purpose described,  
it accepts no liability (to the maximum extent permitted by law)  
For any damage or loss of any nature arising from its use.  
The material supplied is used entirely at the Recipient's own risk.