



PORTS AND YACHTING DIRECTORATE

## LOCAL NOTICE TO MARINERS No 090 of 2021

Our Ref: **TM/PYD/26/95/1**

07 July 2021



**Transport Malta**

Malta Transport Centre,  
Triq Pantar, Hal Lija, LJA 2021  
Malta

Tel: (356) 2122 2203  
Fax: (356) 2125 0365  
Email: [info.tm@transport.gov.mt](mailto:info.tm@transport.gov.mt)

[www.transport.gov.mt](http://www.transport.gov.mt)

### **Fireworks Display from Rinella Bay and Kalkara Creek – Grand Harbour**

The Ports and Yachting Directorate, Transport Malta notifies mariners that fireworks will be let off from Rinella Bay and Kalkara Creek (Points A and B as shown on attached chart) on the dates and times as follows:

In Kalkara Creek from the area known as “taht is-swar tal-Posta ta’ Kastilja u t’Aragona” (point A):

Thursday 15 <sup>th</sup> July 2021	from 2000 hours till 2330 hours
Saturday 17 <sup>th</sup> July 2021	from 2000 hours till mid night
Sunday 18 <sup>th</sup> July 2021	from 1930 hours till 2230 hours

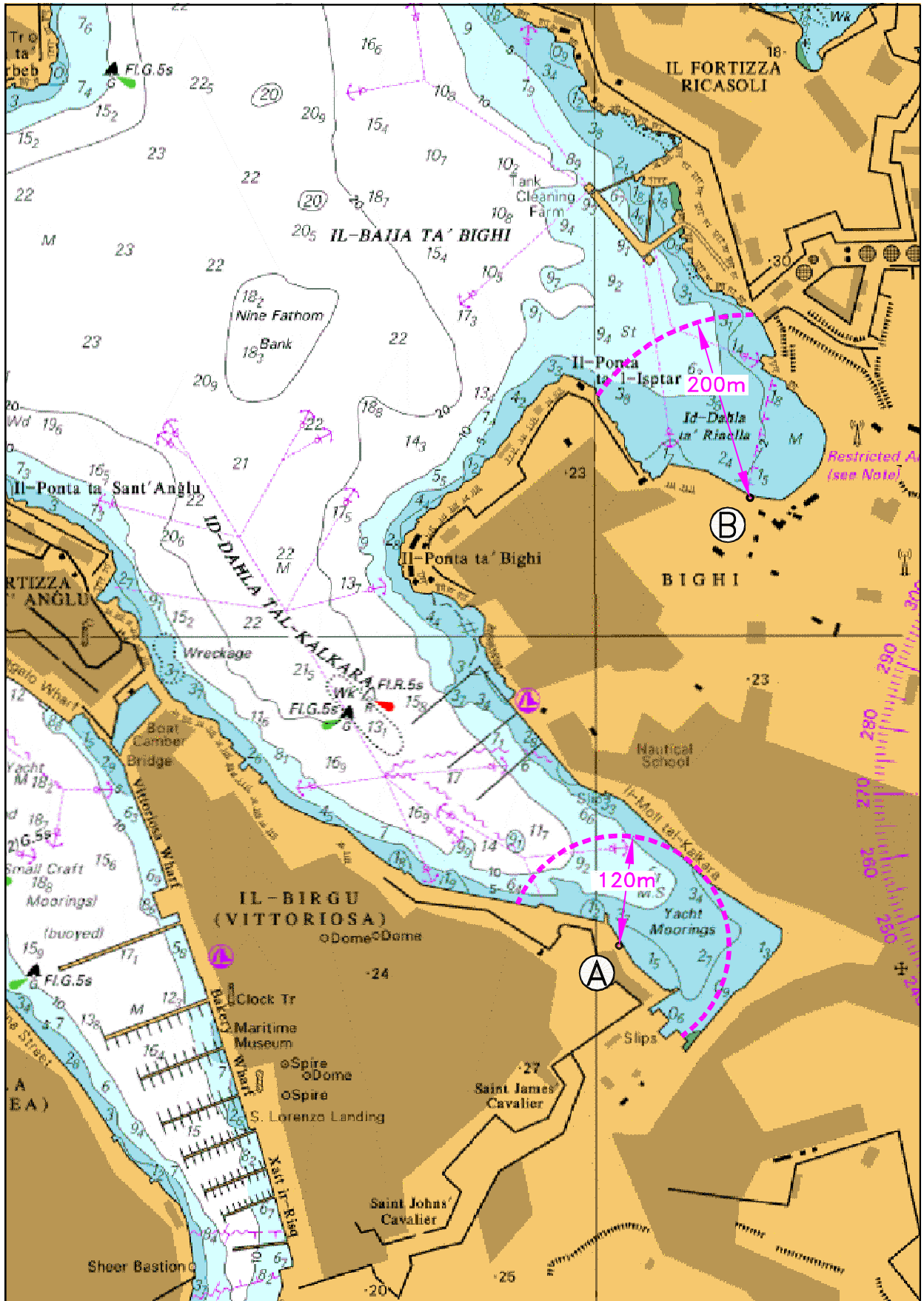
In Rinella Bay, Kalkara (point B):

Friday 16 <sup>th</sup> July 2021	from 0745 hours till 0815 hours, from 1145 hours till 1215 hours and from 2130 hours till 2200 hours
-----------------------------------	---

In view of the above, mariners are to give a wide berth of 200 meters from Rinella Bay, Kalkara (as shown on attached chart point B). All Vessels within 120 meters radius from the area known as “taht s-swar tal-Posta ta’ Kastilja u t’ Aragona” in Kalkara Creek (as shown on attached chart point A) are to be removed on the above-mentioned dates and times of the displays.

All mariners are to comply with any instructions given on VHF Channel 12 and/or 16, by Valletta VTS and by any Enforcement Personnel on site.

Chart Affected: **BA 177**



©British Crown Copyright 1970, 1983, 1986, 1988, 1999, 2000.  
All rights reserved

The UK Hydrographic Office makes the accompanying data available to Transport Malta under the terms and conditions of agreement HD 1427/020930/0L.

**DISCLAIMER**

Whilst the UK Hydrographic Office has endeavoured to ensure that the material supplied is suitable for the purpose described, it accepts no liability (to the maximum extent permitted by law) for any damage or loss of any nature arising from its use. The material supplied is used entirely at the Recipient's own risk.