



PORTS AND YACHTING DIRECTORATE

Transport Malta

NOTICE TO MARINERS No 12 of 2021

Our Ref: **TM/PYD/ 63/00**

Malta Transport Centre
Marsa, MRS 1917
Malta

Tel: (356) 2122 2203
Fax: (356) 2125 0365
Email: info.tm@transport.gov.mt

www.transport.gov.mt

19 April 2021

SMART Marine Scientific Survey

The Ports and Yachting Directorate, Transport Malta, notifies mariners that a Marine Scientific Survey on the North side of the Maltese Islands will commence on Saturday 24th April 2021 and is expected to be completed by Thursday 30th September 2021.

The research will be carried out by divers and they will be assisted by the support vessel "Delfino" which will be stationary or within 20m once the divers have been deployed.

As shown on the attached chart, the marine scientific survey will consist of bedrock sampling which will take place at points A, B and C. There will also be seafloor imagery and fluid sampling from within the area bounded by the imaginary lines S, T, U, V, W, X, Y, Z and the intermediate coastline.

The first bedrock sampling at point B will be carried out on Saturday 24th April 2021, the rest of the work will be carried out on any day up to Thursday 30th September 2021.

	LATITUDE (N)	LONGITUDE (E)
A	36° 04'.470	014° 18'.024
B	36° 02'.388	014° 23'.172
C	35° 48'.960	014° 35'.760
S	36° 04'.494	014° 11'.424
T	36° 06'.426	014° 10'.542
U	36° 07'.368	014° 16'.854
V	36° 02'.592	014° 29'.364
W	35° 55'.770	014° 38'.814
X	35° 52'.206	014° 34'.296
Y	35° 58'.704	014° 19'.410
Z	36° 01'.128	014° 17'.256

Mariners are instructed to navigate with caution when the support vessel "Delfino", which will be displaying the International Code of Signals flag "A", is sighted. All vessels should keep a safety distance of 100m from the support vessel.

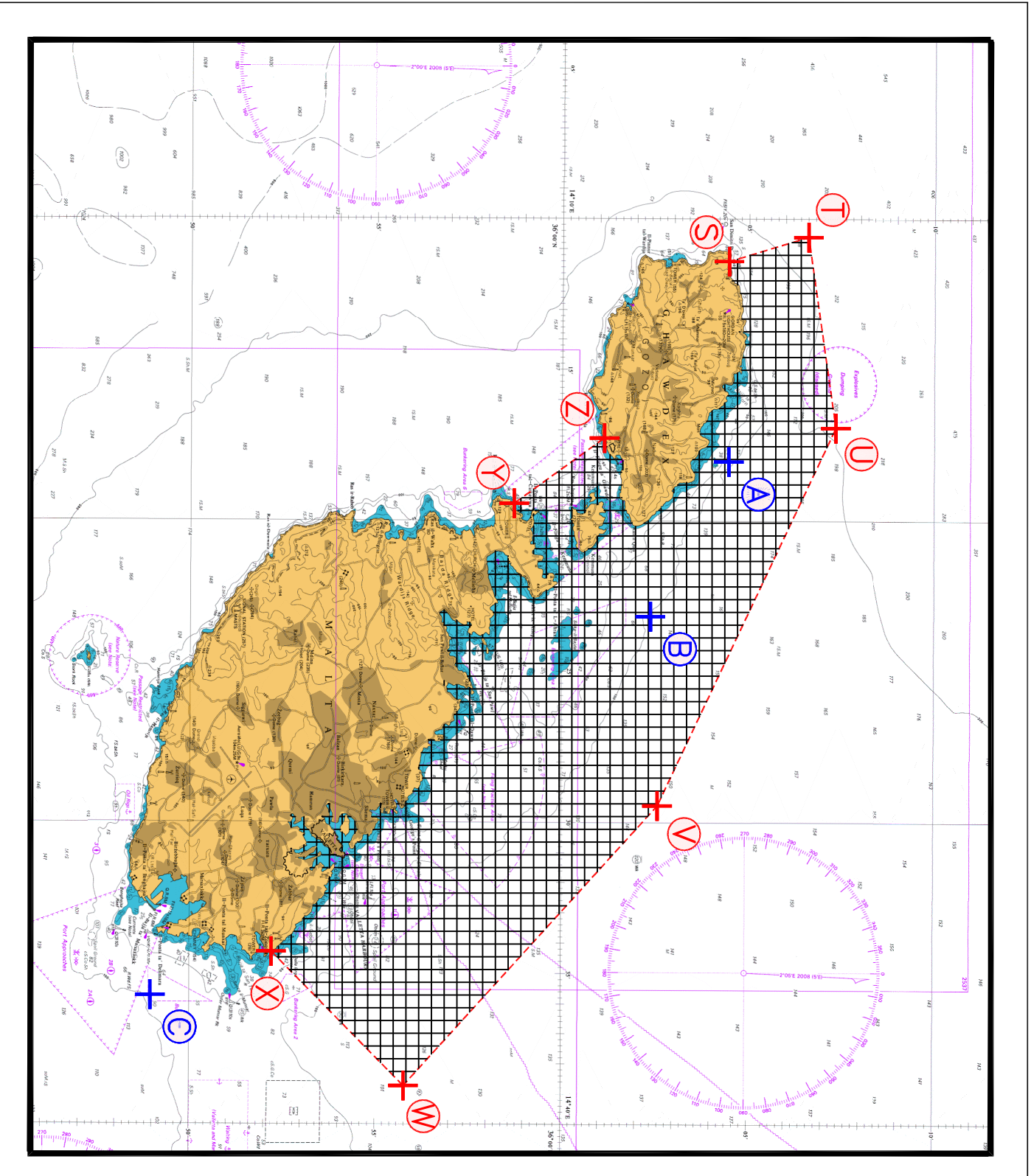


Transport Malta

Any instructions given on VHF Channels **12, 14** and / or **16** by Valletta Port Control (Valletta VTS), Marsaxlokk Port Control (Marsaxlokk VTS), the Armed Forces of Malta or Transport Malta Enforcement personnel, are to be strictly observed.

Positions referred to: **WGS 84 DATUM**

Charts Affected: **BA 2537, 2538, 211, 194, 2123, 2124**



© British Crown Copyright 1970, 1983, 1986, 1988, 1999, 2000
 All rights reserved.

The UK Hydrographic Office makes the accompanying data
 Available to Malta Maritime Authority (Transport Malta)
 Under the terms and conditions of agreement HO 1427/020930/01.

DISCLAIMER

Whilst the UK Hydrographic Office has endeavoured to ensure
 That the material supplied is suitable for the purpose described,
 It accepts no liability (to the maximum extent permitted by law)
 For any damage or loss of any nature arising from its use.
 The material supplied is used entirely at the Recipient's own risk.