



PORTS AND YACHTING DIRECTORATE

Transport Malta

LOCAL NOTICE TO MARINERS No 032 of 2021

Our Ref: **TM/PYD/111/92**

Malta Transport Centre
Marsa, MRS 1917
Malta

Tel: (356) 2122 2203
Fax: (356) 2125 0365
Email: info.tm@transport.gov.mt

15 April 2021

www.transport.gov.mt

Zones reserved for swimmers in Comino

The Ports and Yachting Directorate, Transport Malta notifies all mariners, owners of vessels and bathers, that the following arrangements will be made for Blue Lagoon, Santa Maria Bay and San Niklaw Bay in the North Comino channel for the period between Saturday 1 May 2021 and Friday 15 October 2021.

1a) **Blue Lagoon – Comino Swimmers' Zone** (see Figure 1 attached)

No vessels or objects which may endanger the safety of bathers, including any type of fishing gear/implements, shall be used within a swimmers' zone. The swimmers' zone is being reserved exclusively for bathers and is delineated by the following coordinates: -

Position	Latitude (N)	Longitude (E)	
1A	36° 00'.893	014° 19'.281	(Shore)
1B	36° 00'.898	014° 19'.289	
1C	36° 00'.825	014° 19'.351	
1D	36° 00'.846	014° 19'.440	
1E	36° 00'.854	014° 19'.448	(Shore)
1F	36° 00'.751	014° 19'.471	(Shore)
1G	36° 00'.740	014° 19'.390	(Shore)



Transport Malta

1b) Mooring areas for Commercial vessels

Two mooring areas are being assigned for Commercial vessels. The boundaries of these mooring areas are delineated by the following coordinates: -

Position	Latitude (N)	Longitude (E)	
4	36° 01'.004	014° 19'.397	(Shore)
5	36° 00'.965	014° 19'.332	(Buoy)
6	36° 00'.927	014° 19'.364	
7	36° 00'.974	014° 19'.425	(Shore)
8	36° 00'.920	014° 19'.458	(Shore)
9	36° 00'.941	014° 19'.433	
10	36° 00'.904	014° 19'.383	
11	36° 00'.859	014° 19'.421	
12	36° 00'.866	014° 19'.439	(Shore)

1c) Fairway

A fairway has been established as indicated on the chart attached as Figure 1 and it is delineated by the following positions. Special Mark buoys fitted with a yellow light flashing every 5 seconds will be placed at points **1**, **2**, **3** and **5**.

Position	Latitude (N)	Longitude (E)	
1	36° 00'.852	014° 19'.401	(Buoy)
2	36° 00'.913	014° 19'.346	(Buoy)
3	36° 00'.952	014° 19'.310	(Buoy)
5	36° 00'.965	014° 19'.332	(Buoy)
11	36° 00'.859	014° 19'.421	

9a) Il-Bajja ta' San Niklaw – Comino Swimmers' Zone (see Figure 9 attached)

No vessels or objects which may endanger the safety of bathers, including any type of fishing gear/implements, shall be used within a swimmers' zone. The swimmers' zone is being reserved exclusively for bathers and is delineated by the following coordinates: -

Position	Latitude (N)	Longitude (E)	
9A	36° 01'.008	014° 19'.735	(Shore)
9B	36° 01'.005	014° 19'.749	(Shore)
9C	36° 01'.001	014° 19'.766	
9D	36° 01'.039	014° 19'.773	
9E	36° 01'.037	014° 19'.820	(Shore)



Transport Malta

9b) Fairway

The fairway was established by Notice to Mariners No 07 of 2017 and is to be used solely for navigation and should otherwise be kept clear.

10a) Il-Bajja ta' Santa Maria - Comino (Inner) Swimmers' Zone

(see Figure 10 attached)

No vessels or objects which may endanger the safety of bathers, including any type of fishing gear/implements, shall be used within a swimmers' zone. The swimmers' zone is being reserved exclusively for bathers and is delineated by the following coordinates: -

Position	Latitude (N)	Longitude (E)	
10A	36° 00'.996	014° 20'.180	(Shore)
10B	36° 01'.001	014° 20'.185	
10C	36° 00'.997	014° 20'.247	
10D	36° 00'.984	014° 20'.249	(Shore)

10b) Fairway

The fairway was established by Notice to Mariners No 08 of 2017 and is to be used solely for navigation and should otherwise be kept clear.

53) Il-Bajja ta' Santa Maria - Comino (Outer) Swimmers' Zone

(see Figure 53 attached)

No vessels or objects which may endanger the safety of bathers, including any type of fishing gear/implements, shall be used within a swimmers' zone. The swimmers' zone is being reserved exclusively for bathers and is delineated by the following coordinates: -

Position	Latitude (N)	Longitude (E)	
53A	36° 01'.089	14° 20'.289	(Shore)
53B	36° 01'.134	14° 20'.301	(Shore)

A minimum safety distance of 5 metres from the swimmers' zone is to be maintained.

Nylon ropes supported by floats will delineate the swimmers' zone and may remain in place, two weeks after the stipulated date.



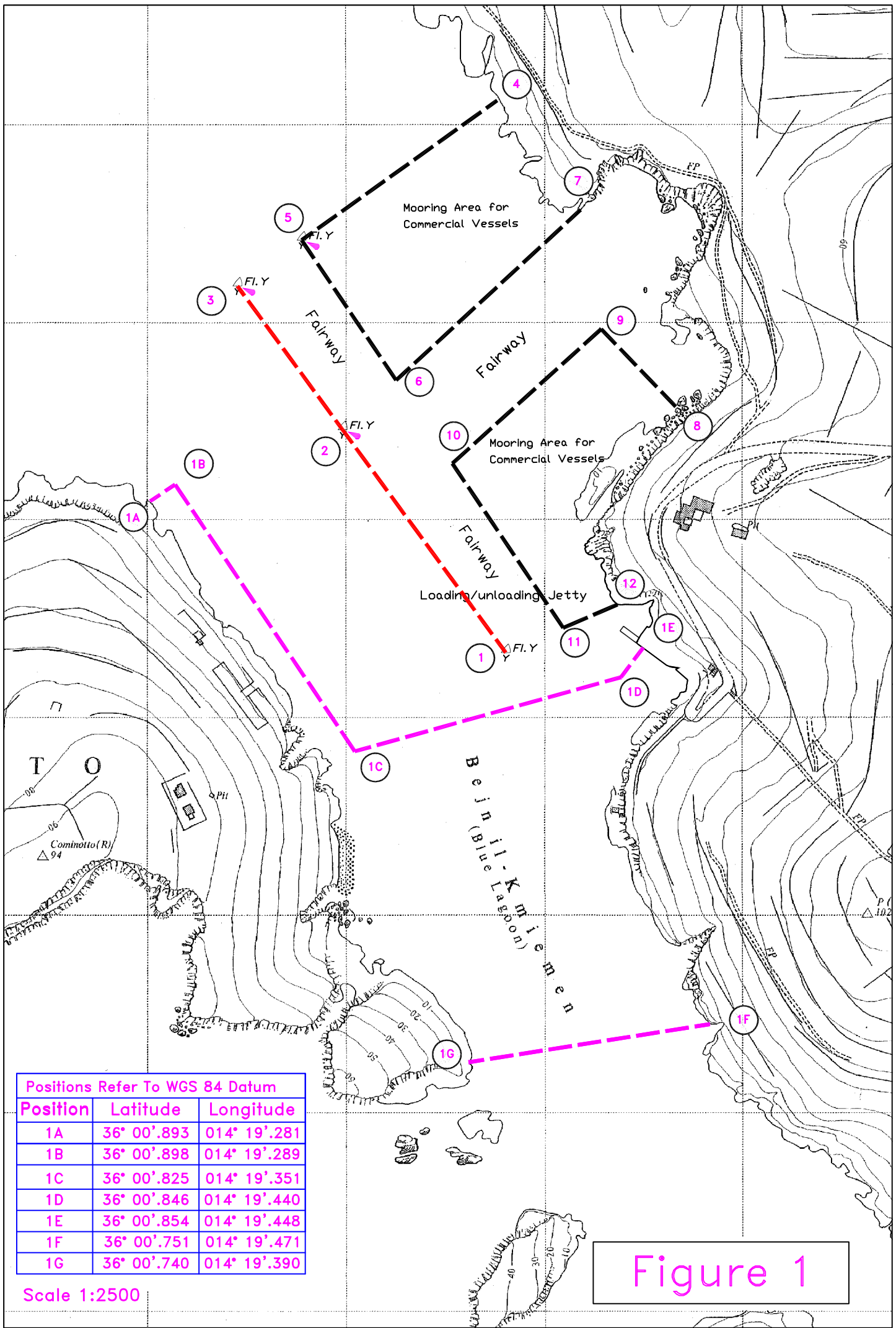
Transport Malta

For the benefit and safety of all bathers and mariners, Transport Malta urges all visitors and commercial vessels to adhere to these arrangements. Enforcement Officers will be constantly patrolling the area. Any offender, on conviction, shall be liable to the fines (multa) as laid down in the second column to the Third Schedule of the Small Ships Regulations, as amended.

Mariners are advised to keep a good lookout and navigate with caution and at slow speed in the North Comino Channel at Blue Lagoon and Santa Maria Bay. They are also reminded that it is prohibited to secure/moor any vessel to any of the marker buoys, swimmers' zone delineation markers and related gear belonging to Transport Malta.

All positions are referred to WGS 84 DATUM.

Chart Affected: BA 211



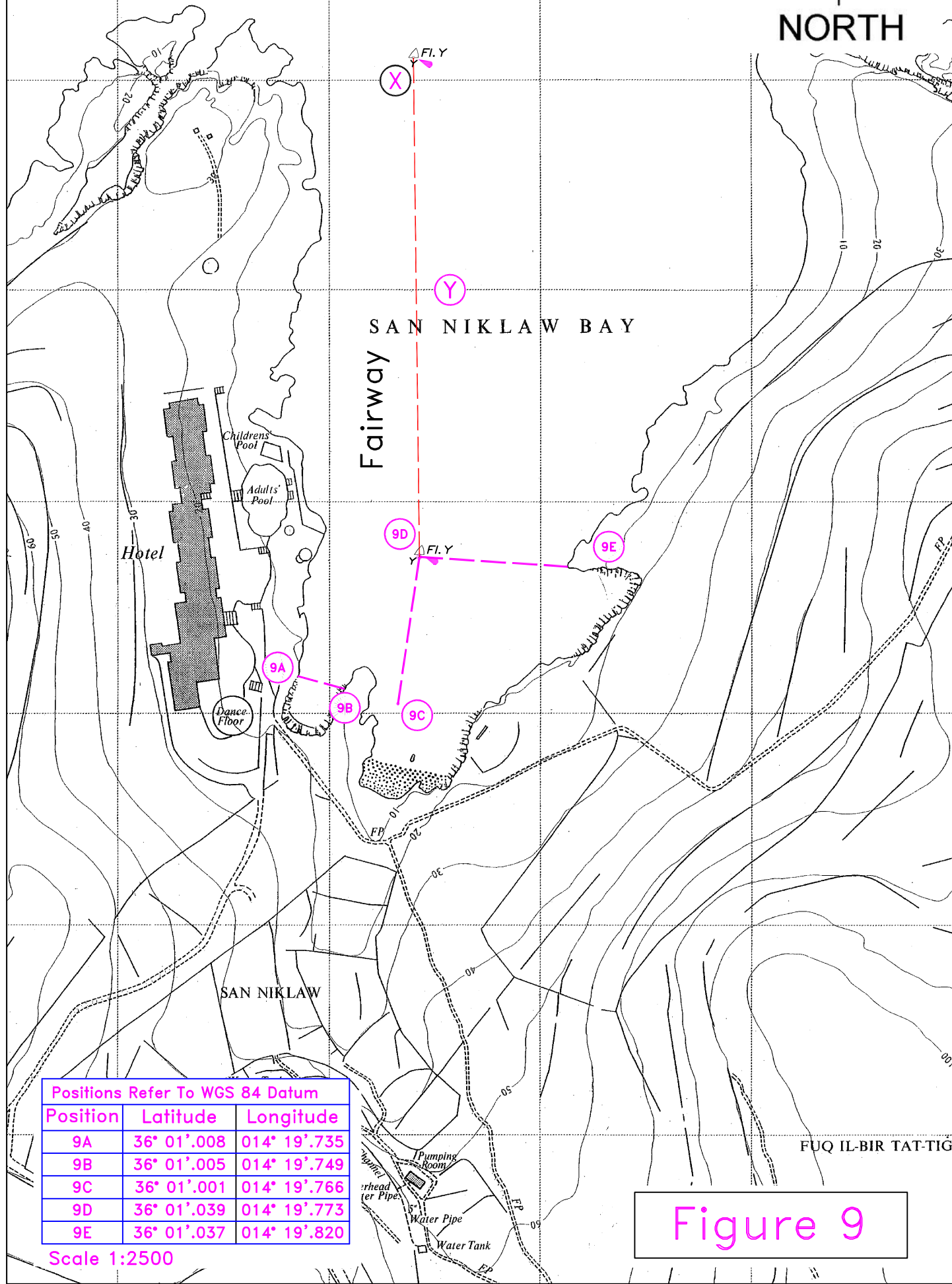
Positions Refer To WGS 84 Datum

Position	Latitude	Longitude
1A	36° 00'.893	014° 19'.281
1B	36° 00'.898	014° 19'.289
1C	36° 00'.825	014° 19'.351
1D	36° 00'.846	014° 19'.440
1E	36° 00'.854	014° 19'.448
1F	36° 00'.751	014° 19'.471
1G	36° 00'.740	014° 19'.390

Scale 1:2500

Figure 1

GU TA'GHAWDEX (COMINO CHANNEL)



Positions Refer To WGS 84 Datum

Position	Latitude	Longitude
9A	36° 01'.008	014° 19'.735
9B	36° 01'.005	014° 19'.749
9C	36° 01'.001	014° 19'.766
9D	36° 01'.039	014° 19'.773
9E	36° 01'.037	014° 19'.820

Scale 1:2500

Figure 9

FUQ IL-BIR TAT-TIG

Positions Refer To WGS 84 Datum		
Position	Latitude	Longitude
10A	36° 00'.996	014° 20'.180
10B	36° 01'.001	014° 20'.185
10C	36° 00'.997	014° 20'.247
10D	36° 00'.984	014° 20'.249

Scale 1:2500

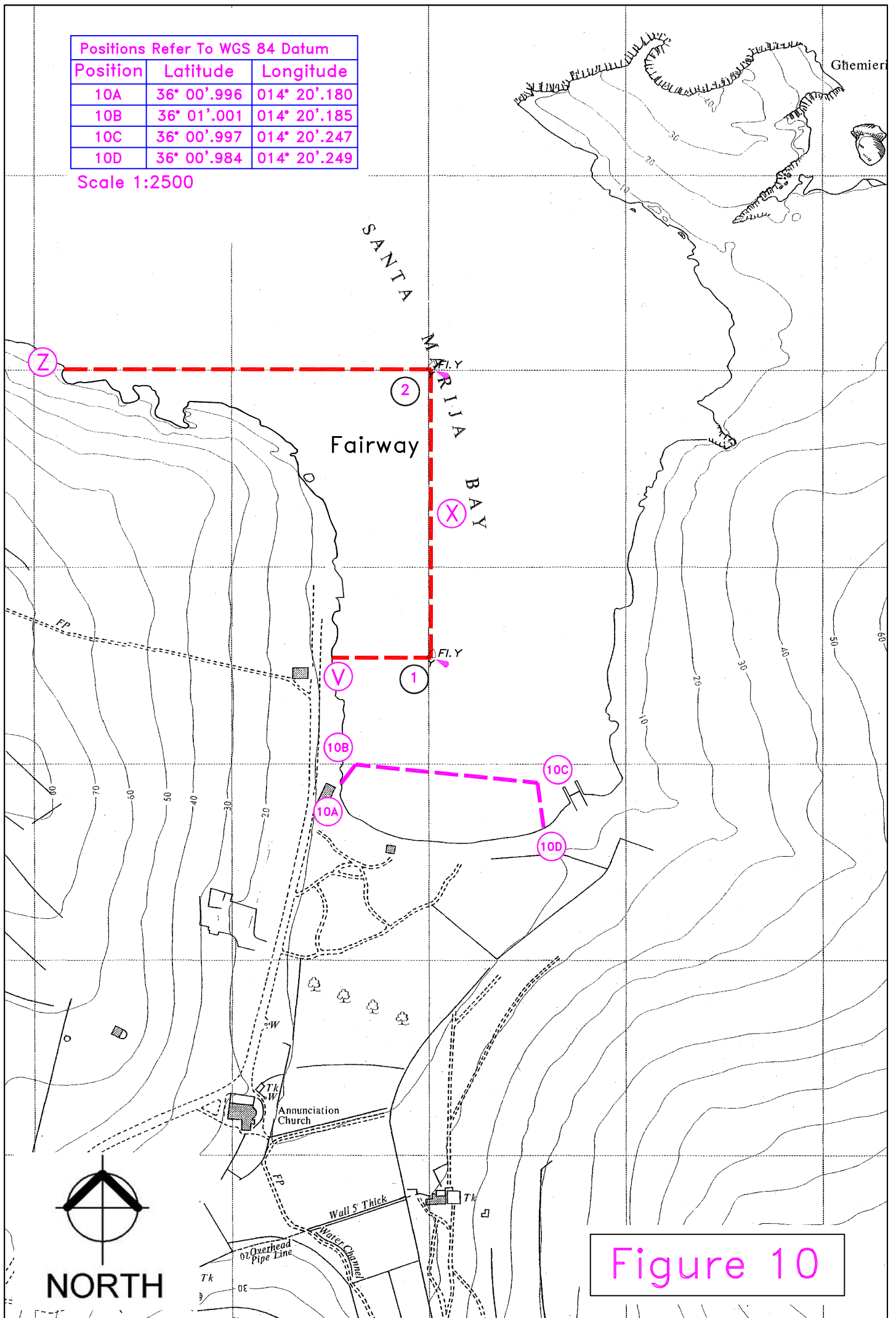


Figure 10

Positions Refer To WGS 84 Datum

Position	Latitude	Longitude
53A	36° 01'.089	014° 20'.289
53B	36° 01'.134	014° 20'.301

Scale 1:2500

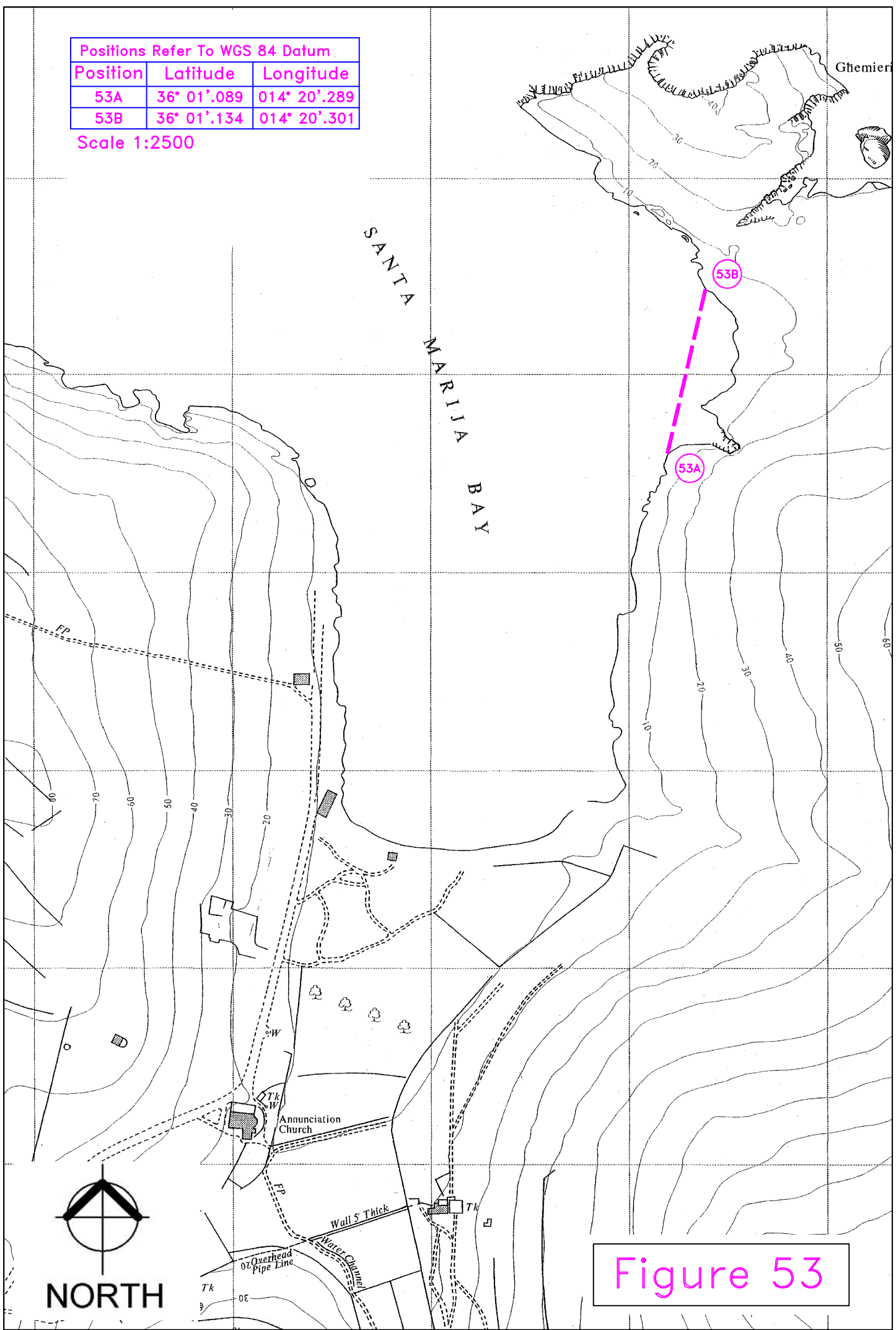


Figure 53